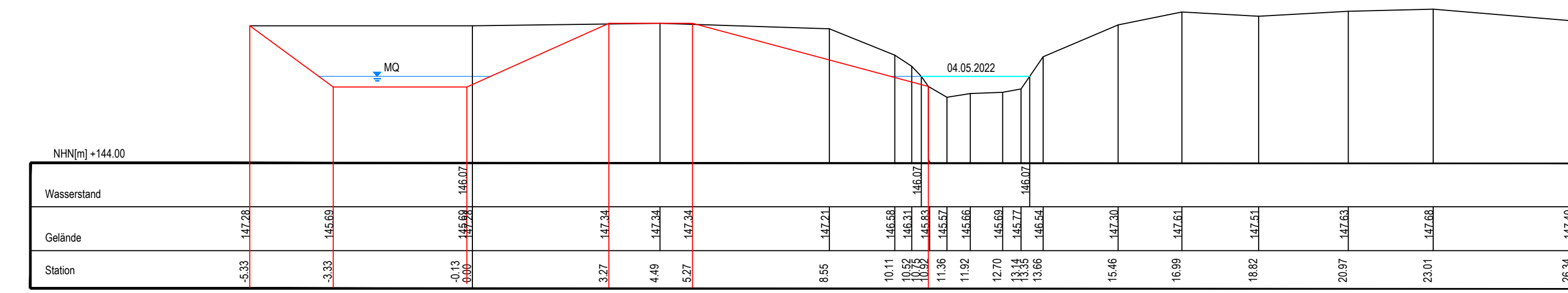
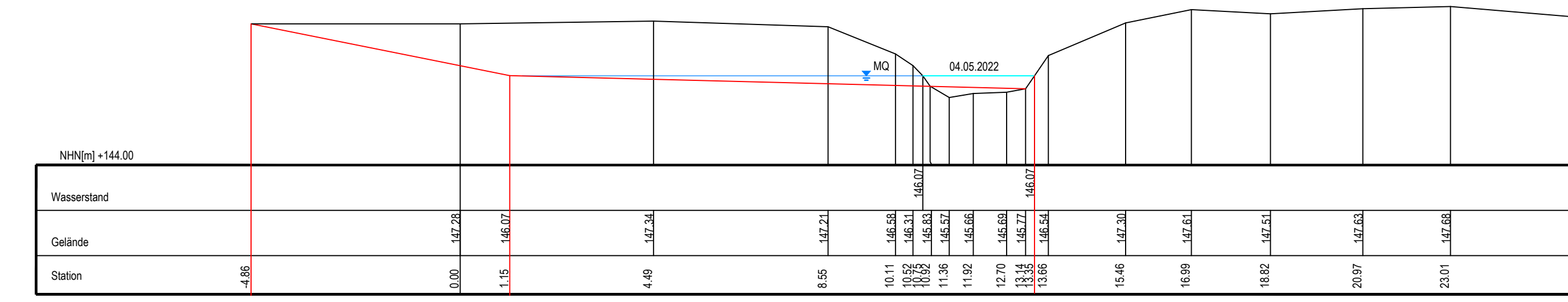


Querprofil B - Fl.km 4+170
(E23200)
1:100



Querprofil C - Fl.km 4+205
(E23100)
1:100



Zeichenerklärung

Planung

- Planung
- Fließrichtung
- Gewässerachse
- Gehölzfällung
- Neupflanzung Gehölz
- Neupflanzung Büsche / Sträucher
- Baustraße
- Baustelleneinrichtungsfäche
- Bengelhecke
- Wurzelstockbühne
- Stammbühne/ Lebendverbau
- Berme u. periodisch überströmte Kiesbank
- Totholzstruktur
- Vorlandstruktur
- Kiesinsel
- Faschinen
- Steinpackung
- Böschung

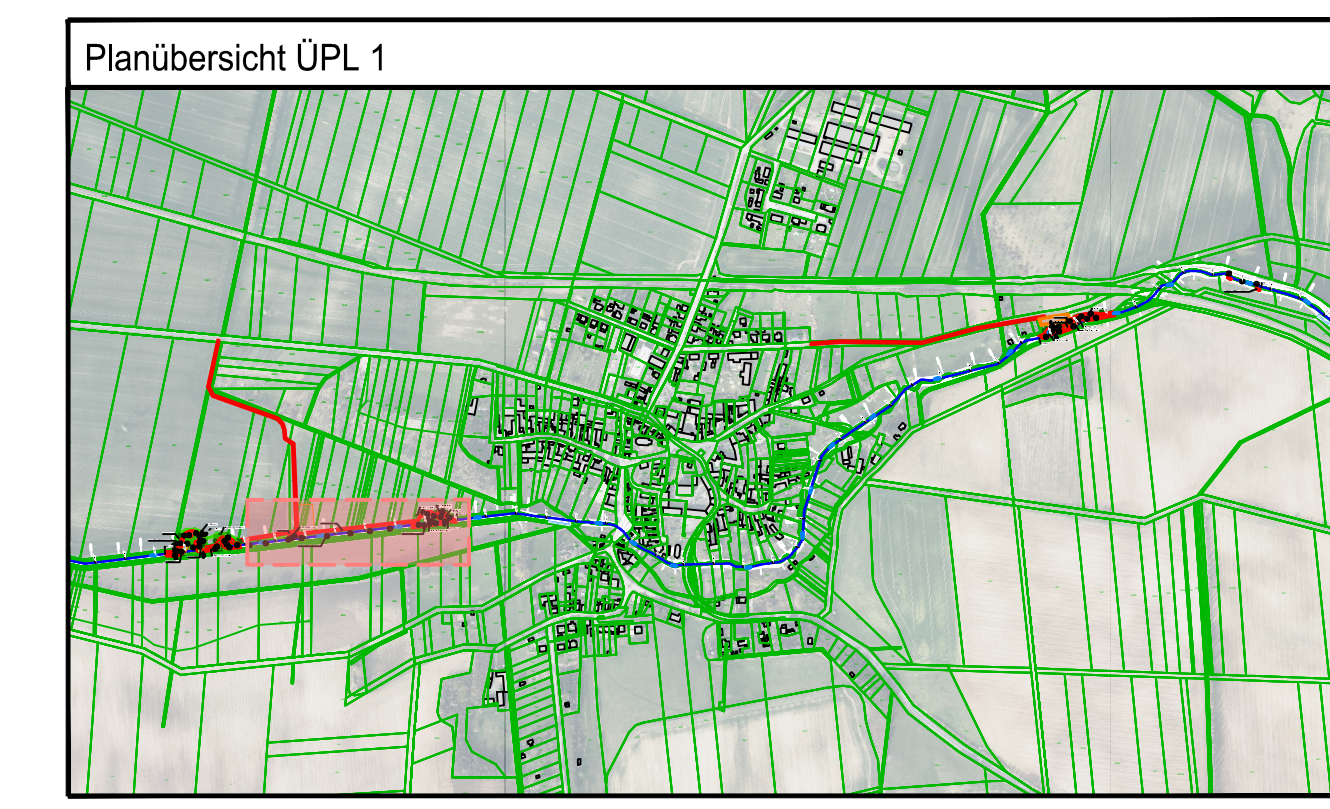
Bestand

- Hauptgebäude
- Bestand
- Böschung
- Stromkabel - Mittelspannung

Kataster

- Gemarkungsgrenze
- Flurgrenze
- Flurstücksgrenze
- Flurstücksbezeichnung

Die Legungsgrenzen wurden grafisch eingepasst und besitzen keinen rechtlichen Charakter.



Änderung	Bearbeitung	Prüfung	Datum

Entwurfer/Verfasser: _____ Auftraggeber: _____
Datum: _____ Datum: _____

GENEHMIGUNGSPLANUNG

Auftraggeber: Gewässerunterhaltungsverband Untere Ilm
Königsstraße 10 - 14
99510 Apolda

Projekt: Initiieren einer eigendynamischen Entwicklung am Emserbach

Planbezeichnung: Detaillageplan 3

Bearbeitung	Zzeichnung	Prüfung	Lagesystem	Höhensystem
GF	BK/AB	AG	ETRS89 (UTM 32)	DHN 2016

Datum: 11/2023 Datum: 11/2023

Projektnr.: _____

BJÖRNSEN BERATENDE INGENIEURE

Björn Jensen
Tel. +49 361 2249-100 | Fax +49 361 2249-111 | www.bjornsen.de

Blattgröße: 1,00 m² Maßstab: 1:250
Unterleg: _____ Blatt-Nr.: B-34

04/2023: 100% (100%)
 03/2023: 100% (100%)
 02/2023: 100% (100%)
 01/2023: 100% (100%)
 12/2022: 100% (100%)
 11/2022: 100% (100%)
 10/2022: 100% (100%)
 09/2022: 100% (100%)
 08/2022: 100% (100%)
 07/2022: 100% (100%)
 06/2022: 100% (100%)
 05/2022: 100% (100%)
 04/2022: 100% (100%)
 03/2022: 100% (100%)
 02/2022: 100% (100%)
 01/2022: 100% (100%)
 12/2021: 100% (100%)
 11/2021: 100% (100%)
 10/2021: 100% (100%)
 09/2021: 100% (100%)
 08/2021: 100% (100%)
 07/2021: 100% (100%)
 06/2021: 100% (100%)
 05/2021: 100% (100%)
 04/2021: 100% (100%)
 03/2021: 100% (100%)
 02/2021: 100% (100%)
 01/2021: 100% (100%)
 12/2020: 100% (100%)
 11/2020: 100% (100%)
 10/2020: 100% (100%)
 09/2020: 100% (100%)
 08/2020: 100% (100%)
 07/2020: 100% (100%)
 06/2020: 100% (100%)
 05/2020: 100% (100%)
 04/2020: 100% (100%)
 03/2020: 100% (100%)
 02/2020: 100% (100%)
 01/2020: 100% (100%)
 12/2019: 100% (100%)
 11/2019: 100% (100%)
 10/2019: 100% (100%)
 09/2019: 100% (100%)
 08/2019: 100% (100%)
 07/2019: 100% (100%)
 06/2019: 100% (100%)
 05/2019: 100% (100%)
 04/2019: 100% (100%)
 03/2019: 100% (100%)
 02/2019: 100% (100%)
 01/2019: 100% (100%)
 12/2018: 100% (100%)
 11/2018: 100% (100%)
 10/2018: 100% (100%)
 09/2018: 100% (100%)
 08/2018: 100% (100%)
 07/2018: 100% (100%)
 06/2018: 100% (100%)
 05/2018: 100% (100%)
 04/2018: 100% (100%)
 03/2018: 100% (100%)
 02/2018: 100% (100%)
 01/2018: 100% (100%)
 12/2017: 100% (100%)
 11/2017: 100% (100%)
 10/2017: 100% (100%)
 09/2017: 100% (100%)
 08/2017: 100% (100%)
 07/2017: 100% (100%)
 06/2017: 100% (100%)
 05/2017: 100% (100%)
 04/2017: 100% (100%)
 03/2017: 100% (100%)
 02/2017: 100% (100%)
 01/2017: 100% (100%)
 12/2016: 100% (100%)
 11/2016: 100% (100%)
 10/2016: 100% (100%)
 09/2016: 100% (100%)
 08/2016: 100% (100%)
 07/2016: 100% (100%)
 06/2016: 100% (100%)
 05/2016: 100% (100%)
 04/2016: 100% (100%)
 03/2016: 100% (100%)
 02/2016: 100% (100%)
 01/2016: 100% (100%)
 12/2015: 100% (100%)
 11/2015: 100% (100%)
 10/2015: 100% (100%)
 09/2015: 100% (100%)
 08/2015: 100% (100%)
 07/2015: 100% (100%)
 06/2015: 100% (100%)
 05/2015: 100% (100%)
 04/2015: 100% (100%)
 03/2015: 100% (100%)
 02/2015: 100% (100%)
 01/2015: 100% (100%)
 12/2014: 100% (100%)
 11/2014: 100% (100%)
 10/2014: 100% (100%)
 09/2014: 100% (100%)
 08/2014: 100% (100%)
 07/2014: 100% (100%)
 06/2014: 100% (100%)
 05/2014: 100% (100%)
 04/2014: 100% (100%)
 03/2014: 100% (100%)
 02/2014: 100% (100%)
 01/2014: 100% (100%)
 12/2013: 100% (100%)
 11/2013: 100% (100%)
 10/2013: 100% (100%)
 09/2013: 100% (100%)
 08/2013: 100% (100%)
 07/2013: 100% (100%)
 06/2013: 100% (100%)
 05/2013: 100% (100%)
 04/2013: 100% (100%)
 03/2013: 100% (100%)
 02/2013: 100% (100%)
 01/2013: 100% (100%)
 12/2012: 100% (100%)
 11/2012: 100% (100%)
 10/2012: 100% (100%)
 09/2012: 100% (100%)
 08/2012: 100% (100%)
 07/2012: 100% (100%)
 06/2012: 100% (100%)
 05/2012: 100% (100%)
 04/2012: 100% (100%)
 03/2012: 100% (100%)
 02/2012: 100% (100%)
 01/2012: 100% (100%)
 12/2011: 100% (100%)
 11/2011: 100% (100%)
 10/2011: 100% (100%)
 09/2011: 100% (100%)
 08/2011: 100% (100%)
 07/2011: 100% (100%)
 06/2011: 100% (100%)
 05/2011: 100% (100%)
 04/2011: 100% (100%)
 03/2011: 100% (100%)
 02/2011: 100% (100%)
 01/2011: 100% (100%)
 12/2010: 100% (100%)
 11/2010: 100% (100%)
 10/2010: 100% (100%)
 09/2010: 100% (100%)
 08/2010: 100% (100%)
 07/2010: 100% (100%)
 06/2010: 100% (100%)
 05/2010: 100% (100%)
 04/2010: 100% (100%)
 03/2010: 100% (100%)
 02/2010: 100% (100%)
 01/2010: 100% (100%)
 12/2009: 100% (100%)
 11/2009: 100% (100%)
 10/2009: 100% (100%)
 09/2009: 100% (100%)
 08/2009: 100% (100%)
 07/2009: 100% (100%)
 06/2009: 100% (100%)
 05/2009: 100% (100%)
 04/2009: 100% (100%)
 03/2009: 100% (100%)
 02/2009: 100% (100%)
 01/2009: 100% (100%)
 12/2008: 100% (100%)
 11/2008: 100% (100%)
 10/2008: 100% (100%)
 09/2008: 100% (100%)
 08/2008: 100% (100%)
 07/2008: 100% (100%)
 06/2008: 100% (100%)
 05/2008: 100% (100%)
 04/2008: 100% (100%)
 03/2008: 100% (100%)
 02/2008: 100% (100%)
 01/2008: 100% (100%)
 12/2007: 100% (100%)
 11/2007: 100% (100%)
 10/2007: 100% (100%)
 09/2007: 100% (100%)
 08/2007: 100% (100%)
 07/2007: 100% (100%)
 06/2007: 100% (100%)
 05/2007: 100% (100%)
 04/2007: 100% (100%)
 03/2007: 100% (100%)
 02/2007: 100% (100%)
 01/2007: 100% (100%)
 12/2006: 100% (100%)
 11/2006: 100% (100%)
 10/2006: 100% (100%)
 09/2006: 100% (100%)
 08/2006: 100% (100%)
 07/2006: 100% (100%)
 06/2006: 100% (100%)
 05/2006: 100% (100%)
 04/2006: 100% (100%)
 03/2006: 100% (100%)
 02/2006: 100% (100%)
 01/2006: 100% (100%)
 12/2005: 100% (100%)
 11/2005: 100% (100%)
 10/2005: 100% (100%)
 09/2005: 100% (100%)
 08/2005: 100% (100%)
 07/2005: 100% (100%)
 06/2005: 100% (100%)
 05/2005: 100% (100%)
 04/2005: 100% (100%)
 03/2005: 100% (100%)
 02/2005: 100% (100%)
 01/2005: 100% (100%)
 12/2004: 100% (100%)
 11/2004: 100% (100%)
 10/2004: 100% (100%)
 09/2004: 100% (100%)
 08/2004: 100% (100%)
 07/2004: 100% (100%)
 06/2004: 100% (100%)
 05/2004: 100% (100%)
 04/2004: 100% (100%)
 03/2004: 100% (100%)
 02/2004: 100% (100%)
 01/2004: 100% (100%)
 12/2003: 100% (100%)
 11/2003: 100% (100%)
 10/2003: 100% (100%)
 09/2003: 100% (100%)
 08/2003: 100% (100%)
 07/2003: 100% (100%)
 06/2003: 100% (100%)
 05/2003: 100% (100%)
 04/2003: 100% (100%)
 03/2003: 100% (100%)
 02/2003: 100% (100%)
 01/2003: 100% (100%)
 12/2002: 100% (100%)
 11/2002: 100% (100%)
 10/2002: 100% (100%)
 09/2002: 100% (100%)
 08/2002: 100% (100%)
 07/2002: 100% (100%)
 06/2002: 100% (100%)
 05/2002: 100% (100%)
 04/2002: 100% (100%)
 03/2002: 100% (100%)
 02/2002: 100% (100%)
 01/2002: 100% (100%)
 12/2001: 100% (100%)
 11/2001: 100% (100%)
 10/2001: 100% (100%)
 09/2001: 100% (100%)
 08/2001: 100% (100%)
 07/2001: 100% (100%)
 06/2001: 100% (100%)
 05/2001: 100% (100%)
 04/2001: 100% (100%)
 03/2001: 100% (100%)
 02/2001: 100% (100%)
 01/2001: 100% (100%)
 12/2000: 100% (100%)
 11/2000: 100% (100%)
 10/2000: 100% (100%)
 09/2000: 100% (100%)
 08/2000: 100% (100%)
 07/2000: 100% (100%)
 06/2000: 100% (100%)
 05/2000: 100% (100%)
 04/2000: 100% (100%)
 03/2000: 100% (100%)
 02/2000: 100% (100%)
 01/2000: 100% (100%)
 12/1999: 100% (100%)
 11/1999: 100% (100%)
 10/1999: 100% (100%)
 09/1999: 100% (100%)
 08/1999: 100% (100%)
 07/1999: 100% (100%)
 06/1999: 100% (100%)
 05/1999: 100% (100%)
 04/1999: 100% (100%)
 03/1999: 100% (100%)
 02/1999: 100% (100%)
 01/1999: 100% (100%)
 12/1998: 100% (100%)
 11/1998: 100% (100%)
 10/1998: 100% (100%)
 09/1998: 100% (100%)
 08/1998: 100% (100%)
 07/1998: 100% (100%)
 06/1998: 100% (100%)
 05/1998: 100% (100%)
 04/1998: 100% (100%)
 03/1998: 100% (100%)
 02/1998: 100% (100%)
 01/1998: 100% (100%)
 12/1997: 100% (100%)
 11/1997: 100% (100%)
 10/1997: 100% (100%)
 09/1997: 100% (100%)
 08/1997: 100% (100%)
 07/1997: 100% (100%)
 06/1997: 100% (100%)
 05/1997: 100% (100%)
 04/1997: 100% (100%)
 03/1997: 100% (100%)
 02/1997: 100% (100%)
 01/1997: 100% (100%)
 12/1996: 100% (100%)
 11/1996: 100% (100%)
 10/1996: 100% (100%)
 09/1996: 100% (100%)
 08/1996: 100% (100%)
 07/1996: 100% (100%)
 06/1996: 100% (100%)
 05/1996: 100% (100%)
 04/1996: 100% (100%)
 03/1996: 100% (100%)
 02/1996: 100% (100%)
 01/1996: 100% (100%)
 12/1995: 100% (100%)
 11/1995: 100% (100%)
 10/1995: 100% (100%)
 09/1995: 100% (100%)
 08/1995: 100% (100%)
 07/1995: 100% (100%)
 06/1995: 100% (100%)
 05/1995: 100% (100%)
 04/1995: 100% (100%)
 03/1995: 100% (100%)
 02/1995: 100% (100%)
 01/1995: 100% (100%)
 12/1994: 100% (100%)
 11/1994: 100% (100%)
 10/1994: 100% (100%)
 09/1994: 100% (100%)
 08/1994: 100% (100%)
 07/1994: 100% (100%)
 06/1994: 100% (100%)
 05/1994: 100% (100%)
 04/1994: 100% (100%)
 03/1994: 100% (100%)
 02/1994: 100% (100%)
 01/1994: 100% (100%)
 12/1993: 100% (100%)
 11/1993: 100% (100%)
 10/1993: 100% (100%)
 09/1993: 100% (100%)
 08/1993: 100% (100%)
 07/1993: 100% (100%)
 06/1993: 100% (100%)
 05/1993: 100% (100%)
 04/1993: 100% (100%)
 03/1993: 100% (100%)
 02/1993: 100% (100%)
 01/1993: 100% (100%)
 12/1992: 100% (100%)
 11/1992: 100% (100%)
 10/1992: 100% (100%)
 09/1992: 100% (100%)
 08/1992: 100% (100%)
 07/1992: 100% (100%)
 06/1992: 100% (100%)
 05/1992: 100% (100%)
 04/1992: 100% (100%)
 03/1992: 100% (100%)
 02/1992: 100% (100%)
 01/1992: 100% (100%)
 12/1991: 100% (100%)
 11/1991: 100% (100%)
 10/1991: 100% (100%)
 09/1991: 100% (100%)
 08/1991: 100% (100%)
 07/1991: 100% (100%)
 06/1991: 100% (100%)
 05/1991: 100% (100%)
 04/1991: 100% (100%)
 03/1991: 100% (100%)
 02/1991: 100% (100%)
 01/1991: 100% (100%)
 12/1990: 100% (100%)
 11/1990: 100% (100%)
 10/1990: 100% (100%)
 09/1990: 100% (100%)
 08/1990: 100% (100%)
 07/1990: 100% (100%)
 06/1990: 100% (100%)
 05/1990: 100% (100%)
 04/1990: 100% (100%)
 03/1990: 100% (100%)
 02/1990: 100% (100%)
 01/1990: 100% (100%)
 12/1989: 100% (100%)
 11/1989: 100% (100%)
 10/1989: 100% (100%)
 09/1989: 100% (100%)
 08/1989: 100% (100%)
 07/1989: 100% (100%)
 06/1989: 100% (100%)
 05/1989: 100% (100%)
 04/1989: 100% (100%)
 03/1989: 100% (100%)
 02/1989