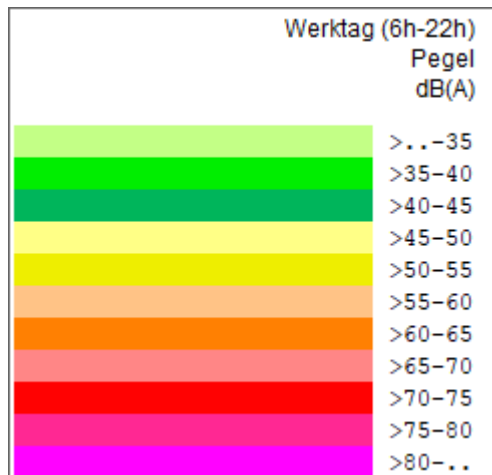
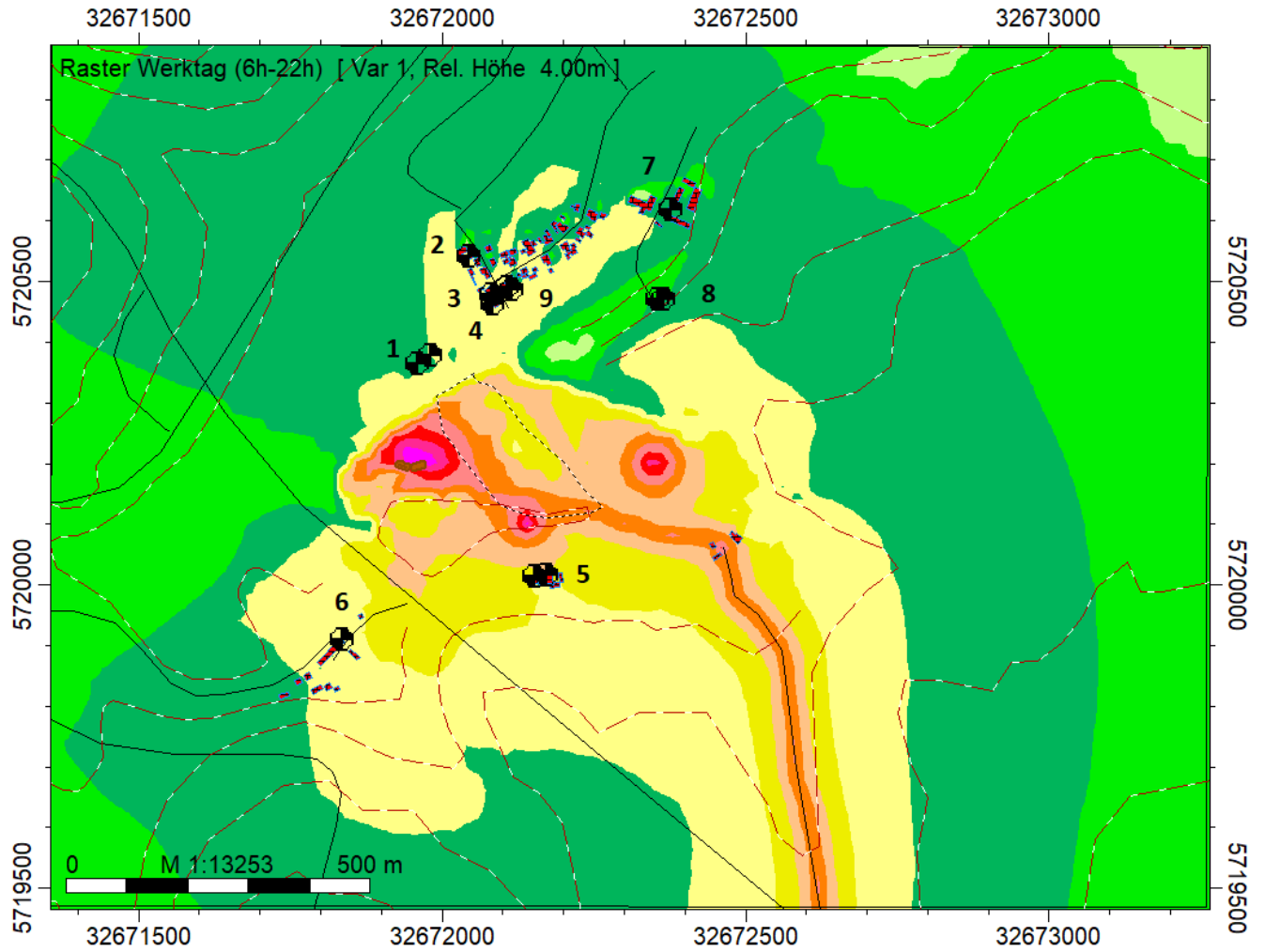
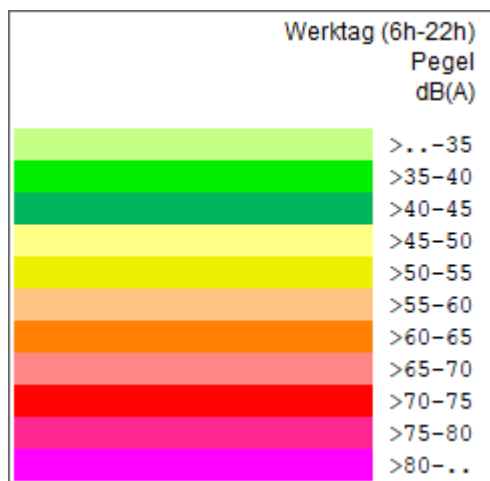
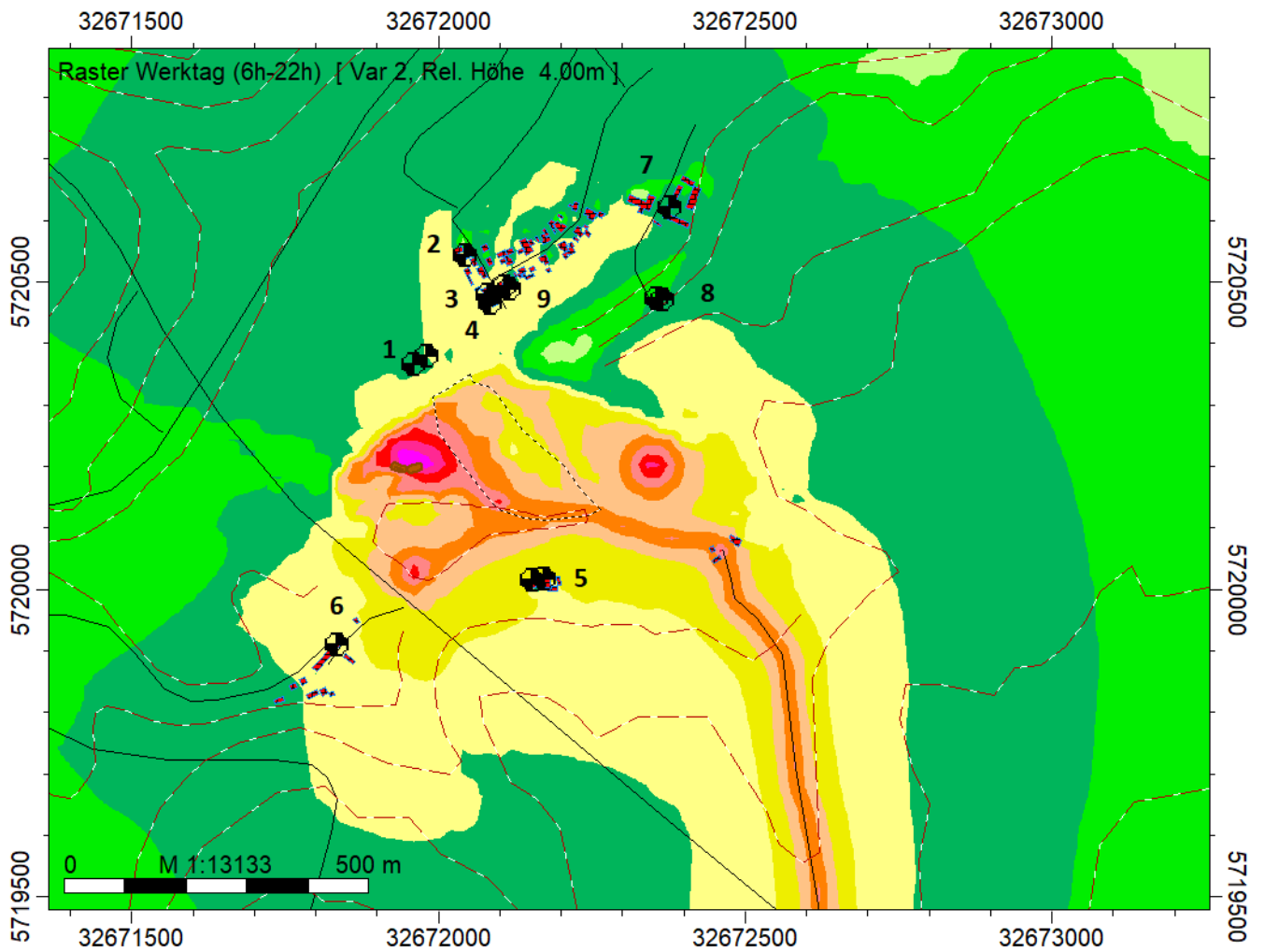


Anlage 5

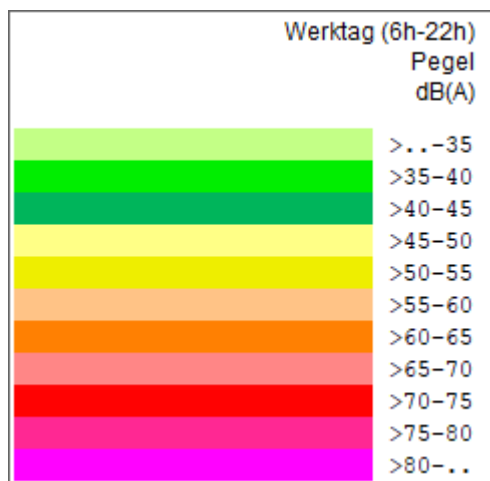
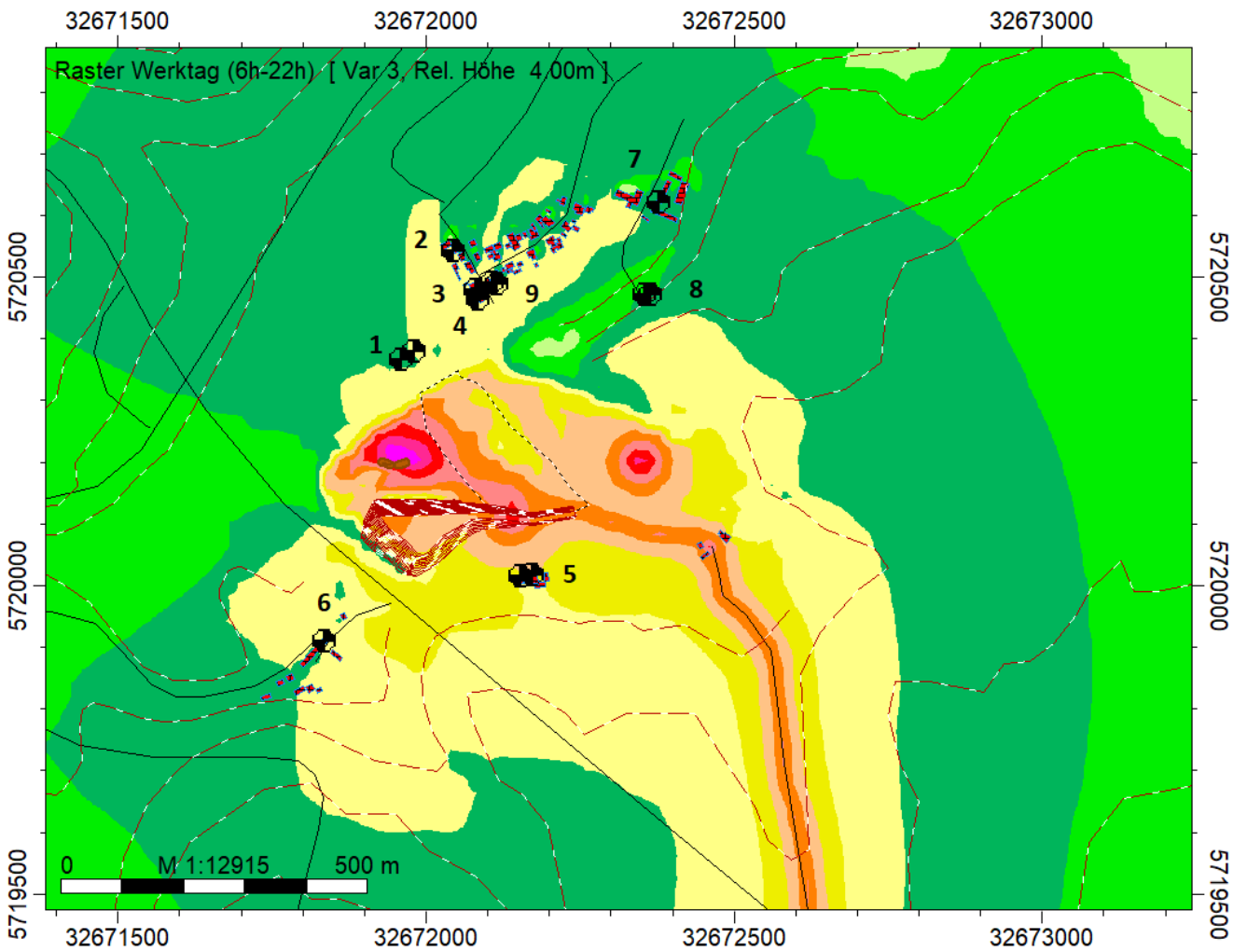
Immissionsraster Variante 1, Zeitraum Tag (6:00 bis 22:00 Uhr)



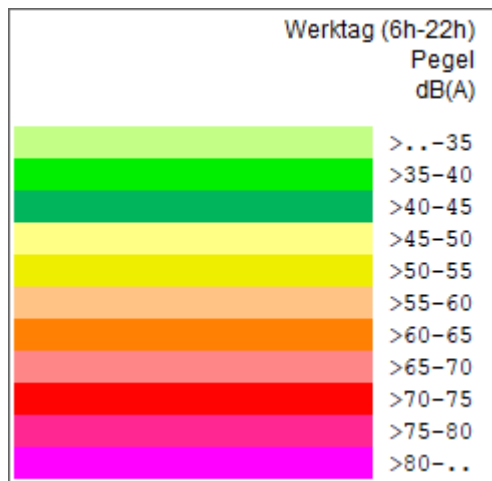
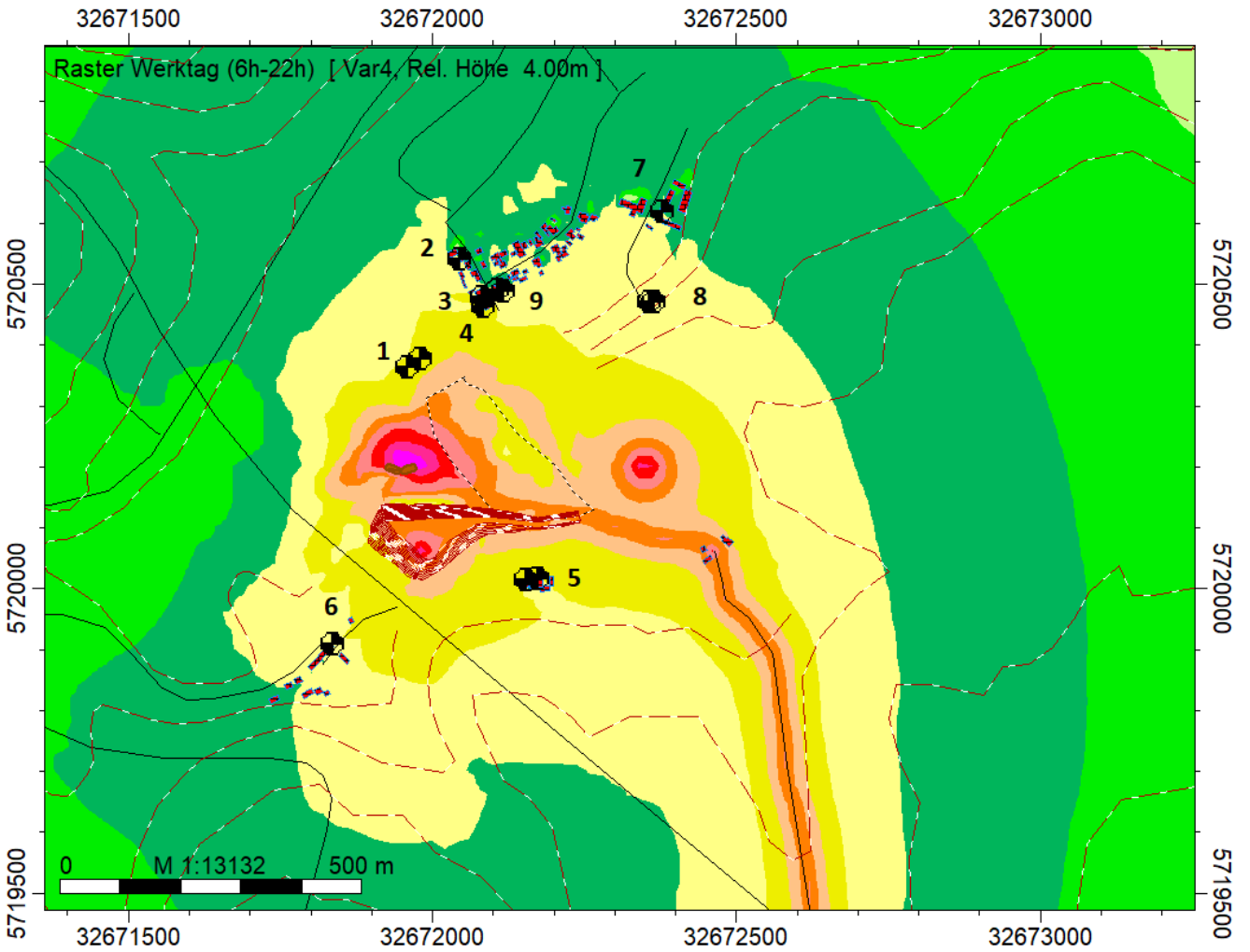
Immissionsraster Variante 2, Zeitraum Tag (6:00 bis 22:00 Uhr)



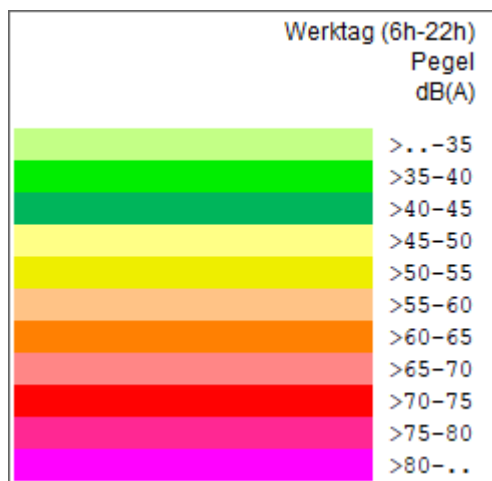
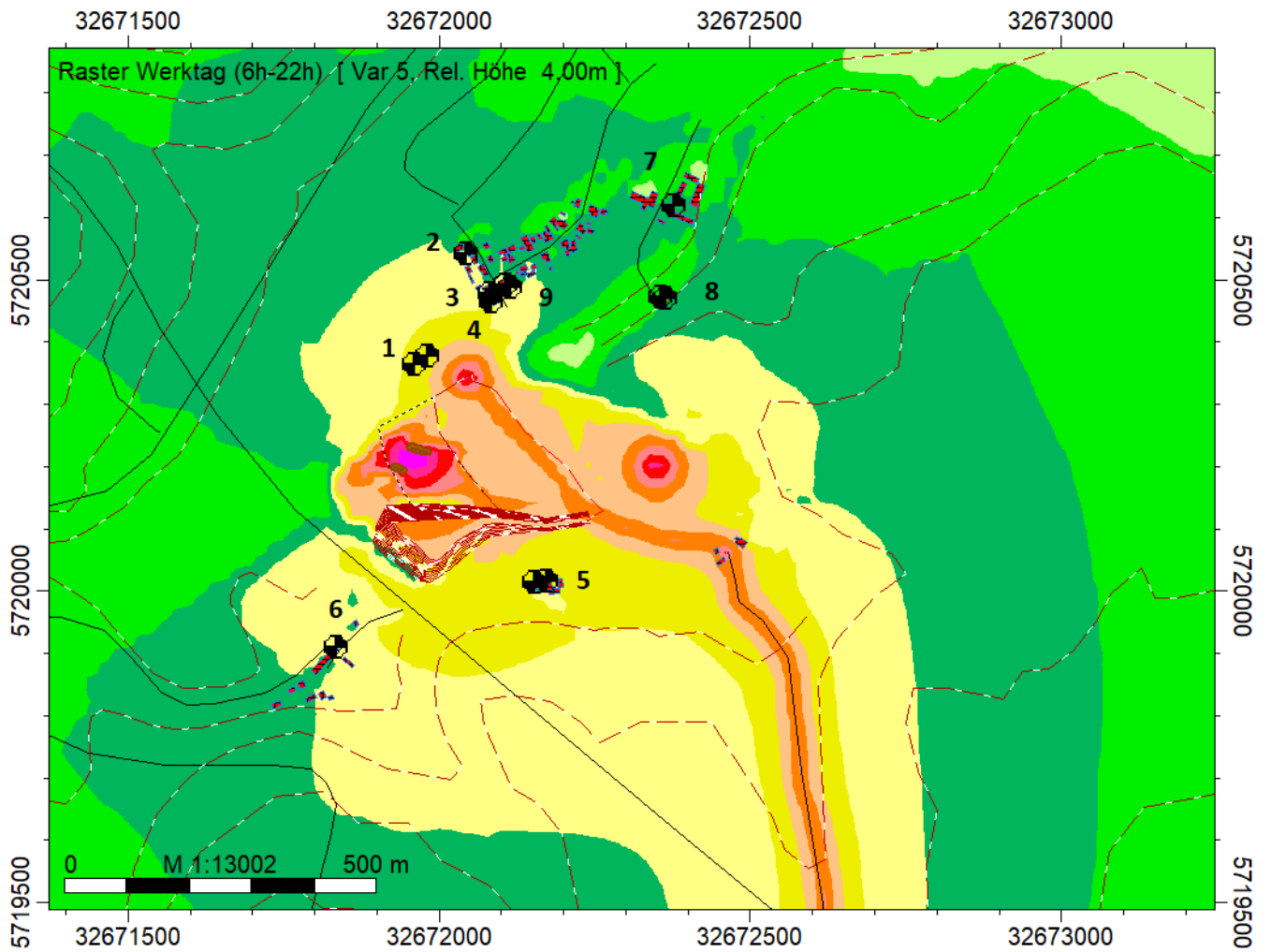
Immissionsraster Variante 3, Zeitraum Tag (6:00 bis 22:00 Uhr)



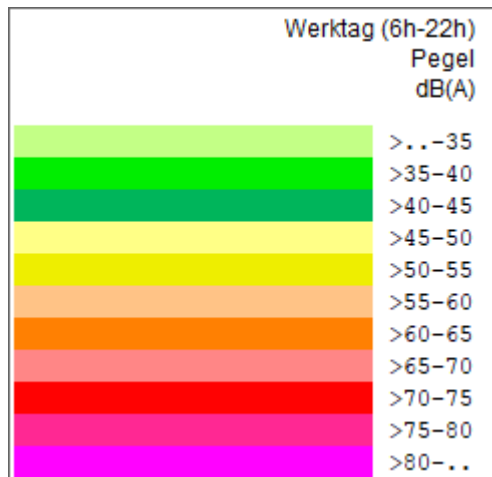
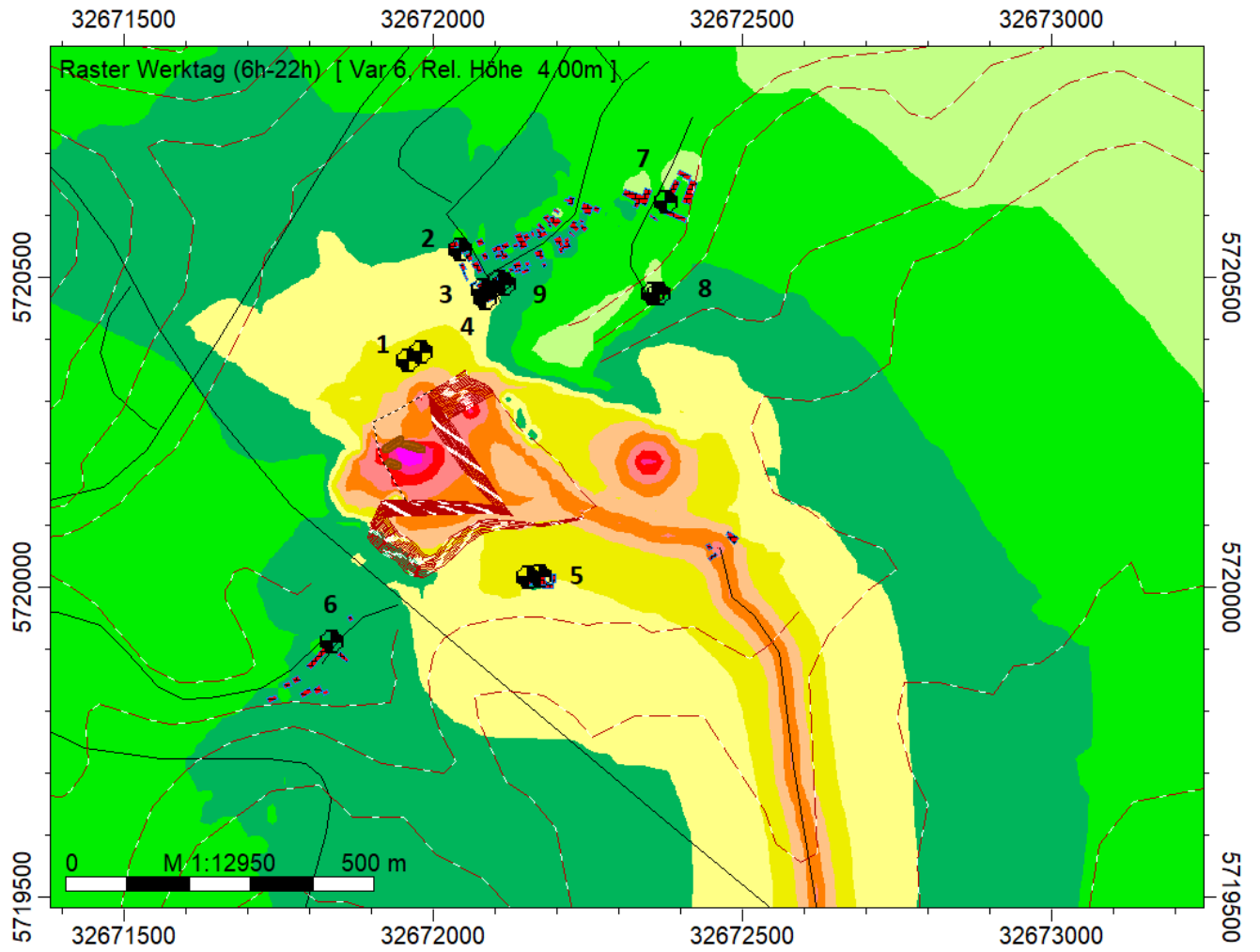
Immissionsraster Variante 4, Zeitraum Tag (6:00 bis 22:00 Uhr)



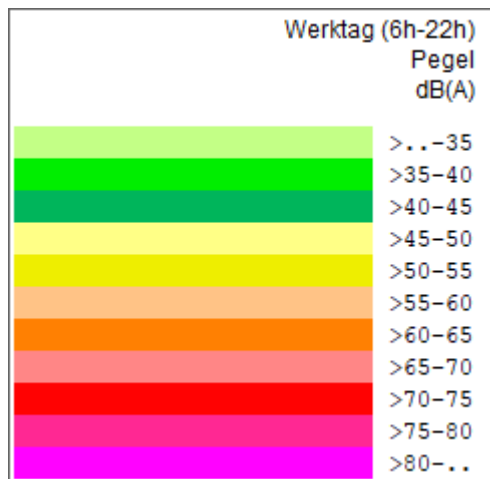
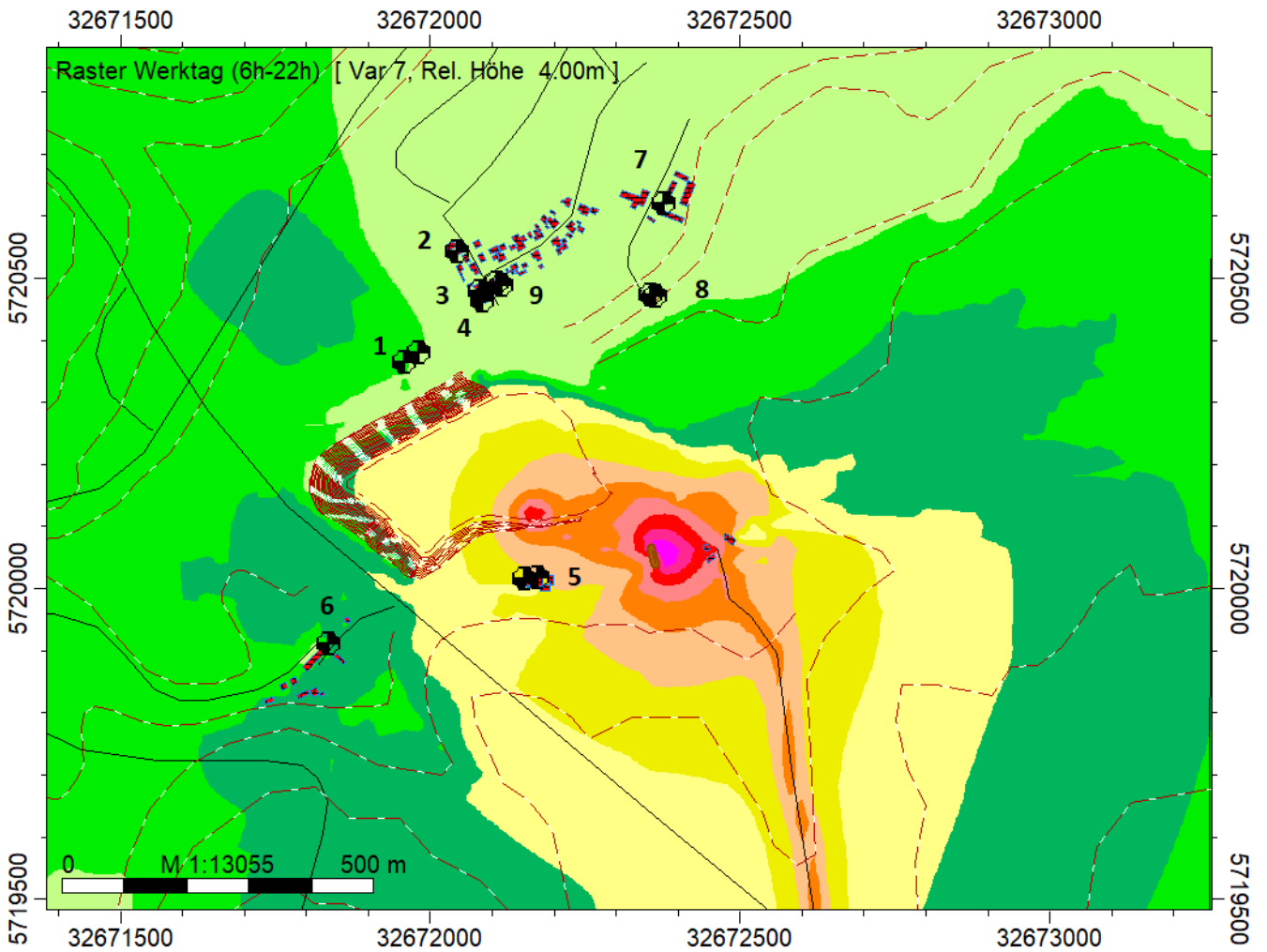
Immissionsraster Variante 5, Zeitraum Tag (6:00 bis 22:00 Uhr)



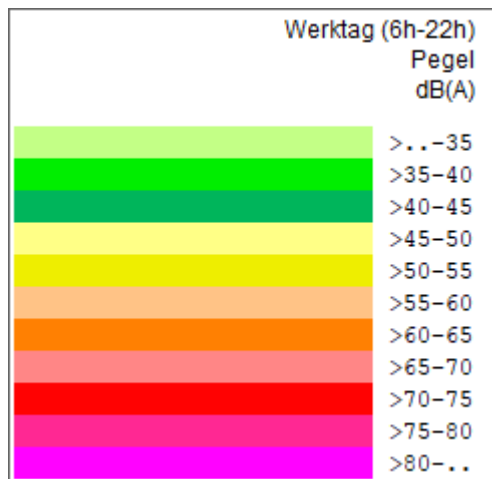
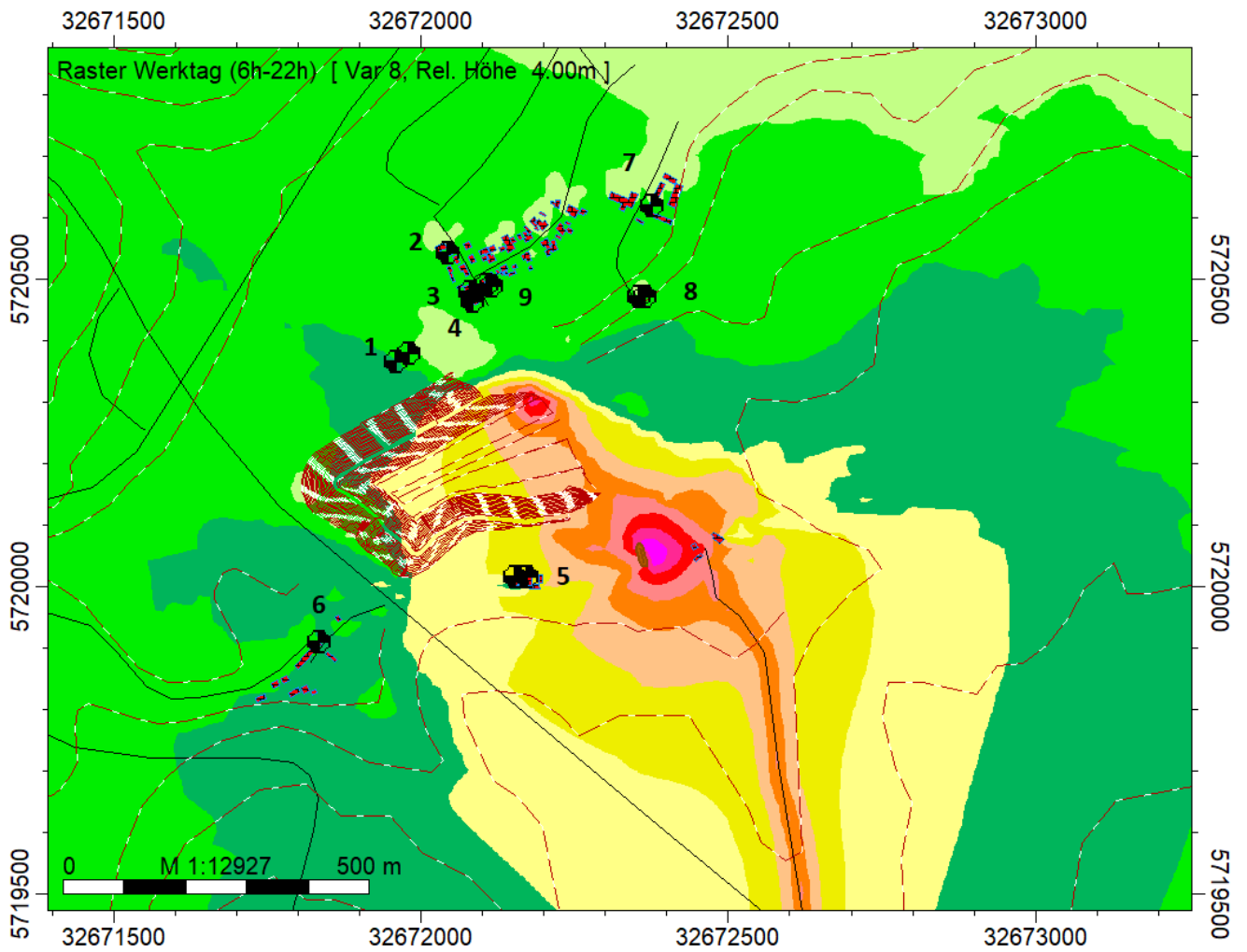
Immissionsraster Variante 6, Zeitraum Tag (6:00 bis 22:00 Uhr)



Immissionsraster Variante 7, Zeitraum Tag (6:00 bis 22:00 Uhr)



Immissionsraster Variante 8, Zeitraum Tag (6:00 bis 22:00 Uhr)



Hinweis: Die Immissionsraster wurden mit der Einstellung für „Allgemeine Wohngebiete“ berechnet. Die Immissionshöhe beträgt standardmäßig 4 m, daher werden für die schützenswerten Nutzungen mit einem Mischgebietscharakter mitunter zu hohe Rasterwerte dargestellt.