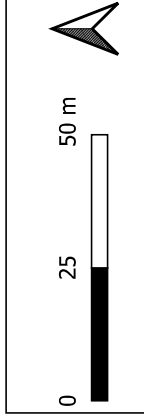


# Scénario 11 - Éclatement stockage H2

Effets de surpression  
Projet ReSolute

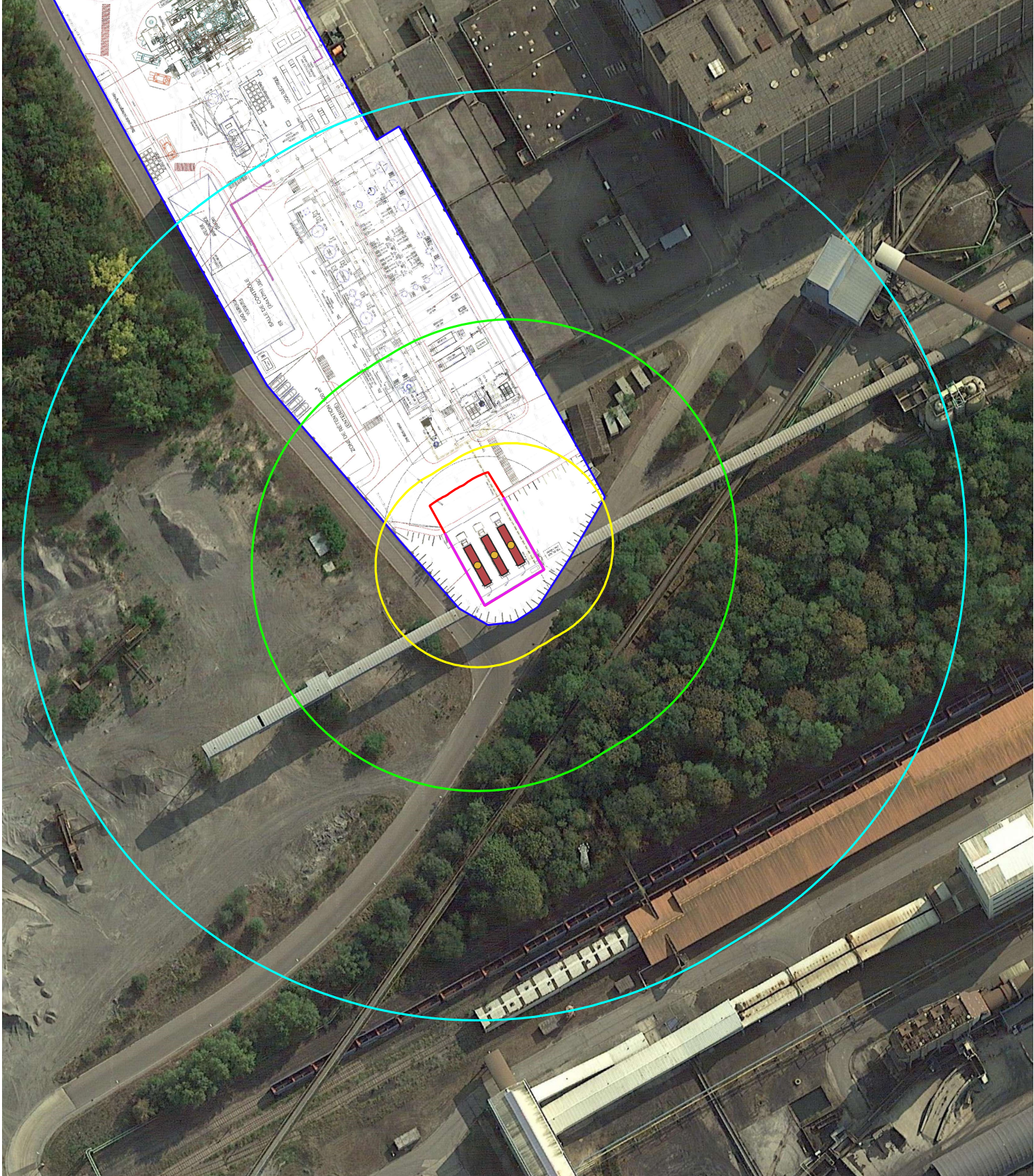


Date : 27.10.2023  
Version : 1

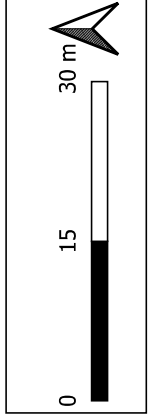


## Légende

- BV (125 m)
- SEI (62 m)
- SEL (28 m)
- SELS atténués
- Stockage H2
- Mur protection
- Limites de site CIRCA

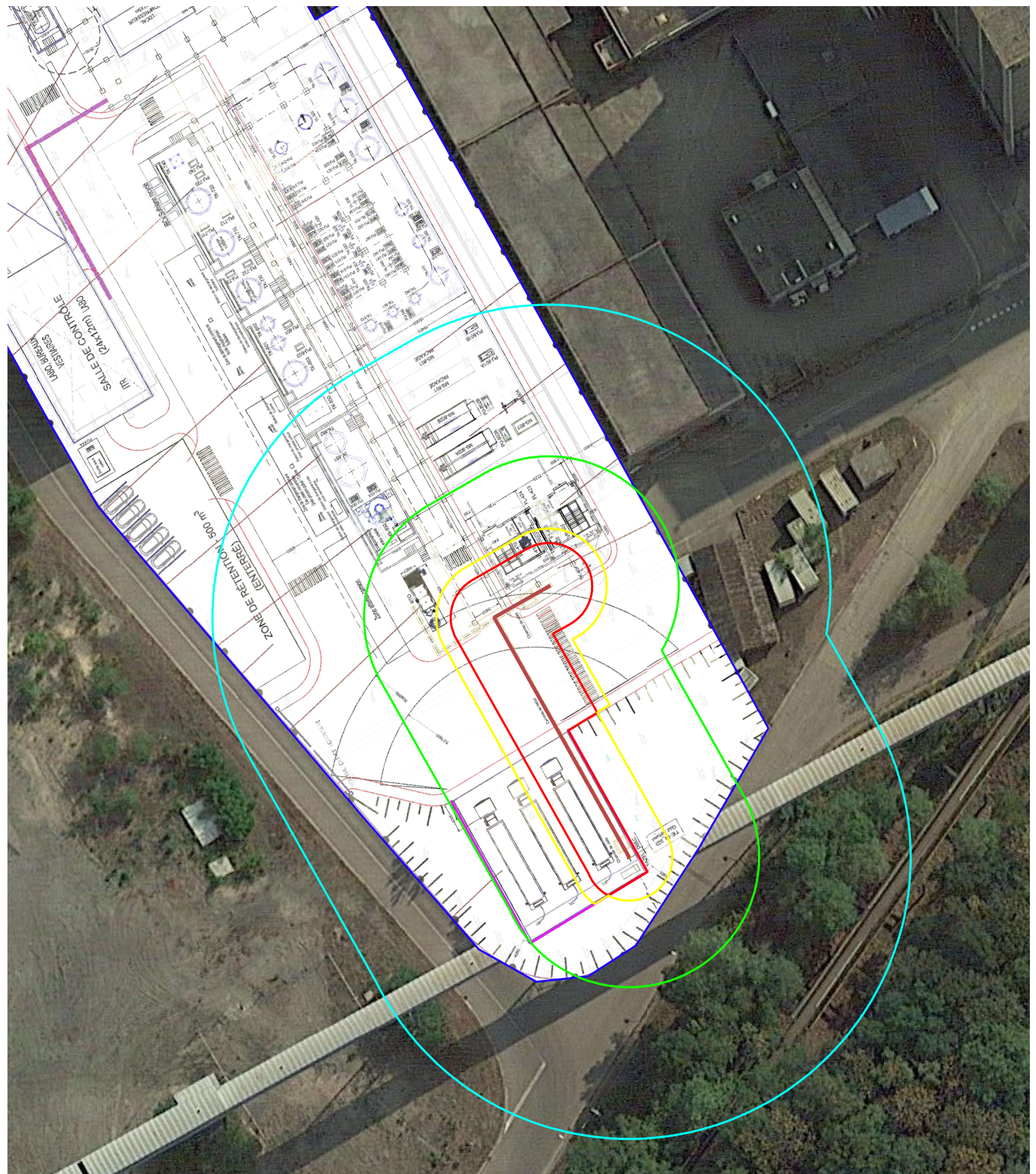


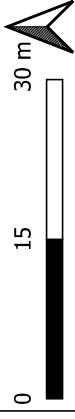
Agence IdF - 23 rue Colbert  
78 180 Montigny-Le-Bretonneux  
Tel : 01 61 38 37 33 - [www.iso-ingenierie.com](http://www.iso-ingenierie.com)



**Légende**

- BV (39 m)
- SEI (18 m)
- SEL atténué
- SELS atténué
- Limites de site CIRCA
- Mur de protection

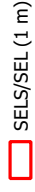




**Légende**



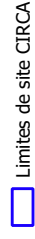
SEI (2 m)



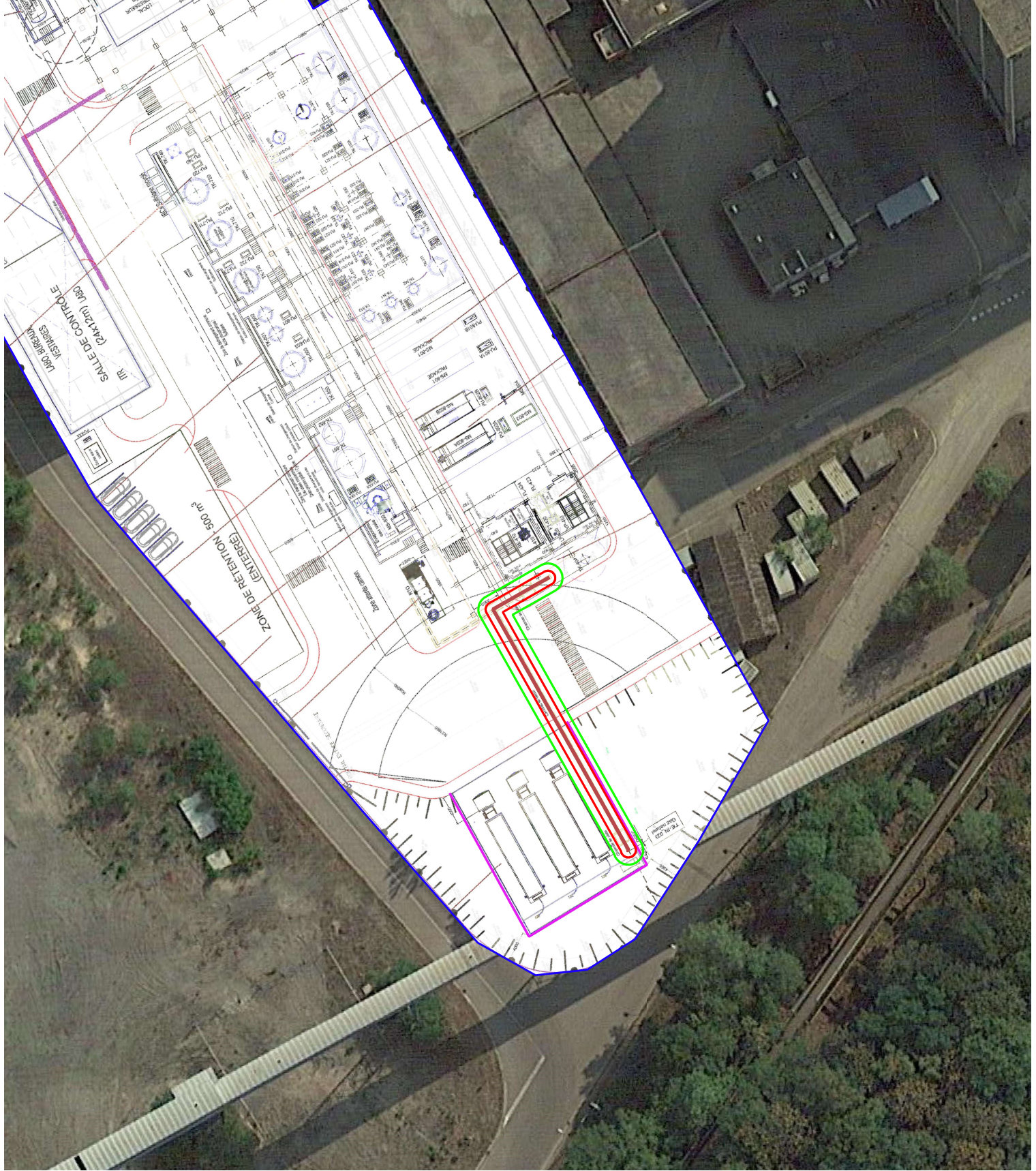
SELS/SEL (1 m)

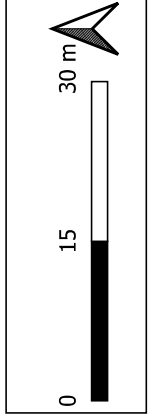


Tuyauterie H2 enterrée

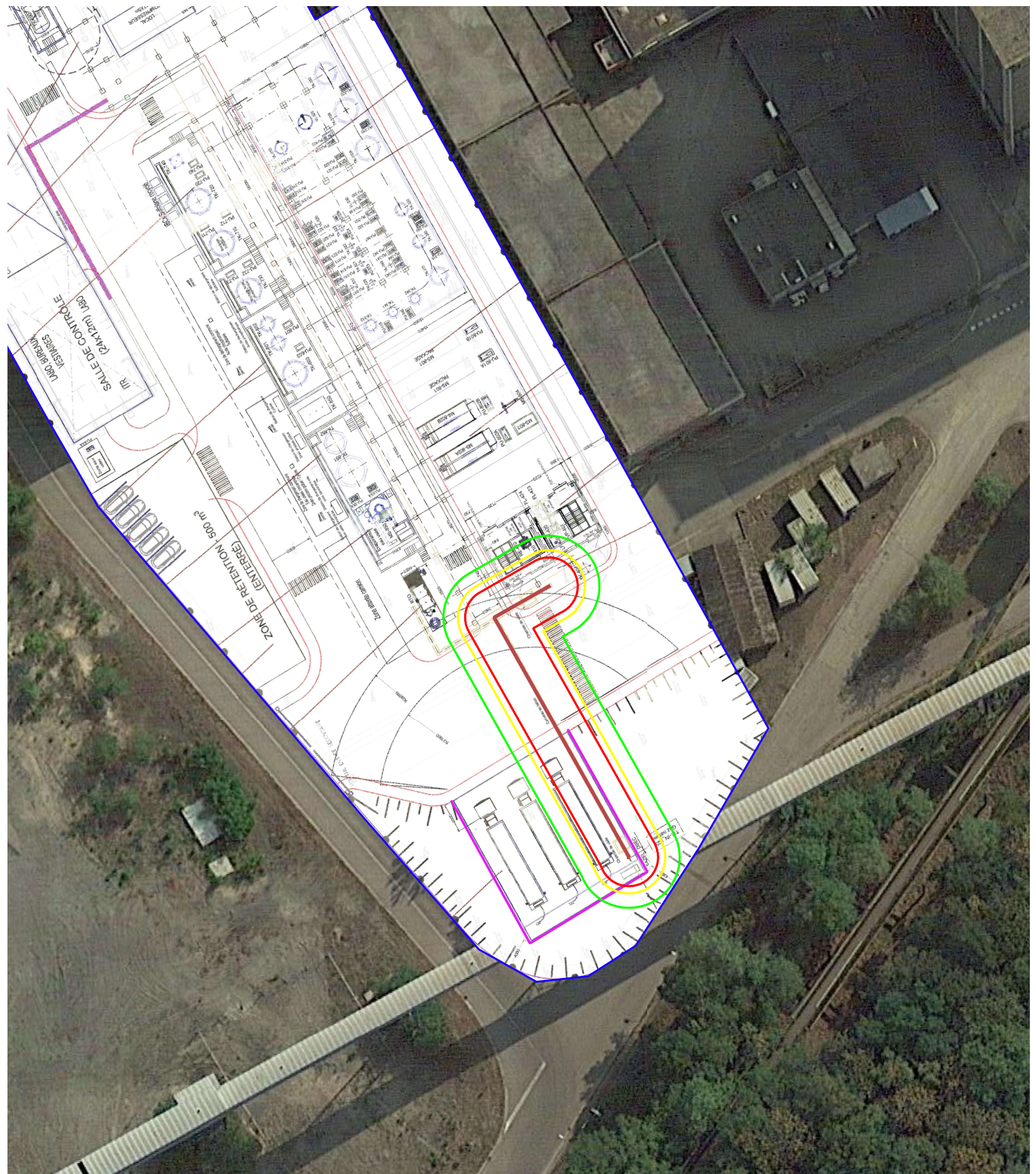


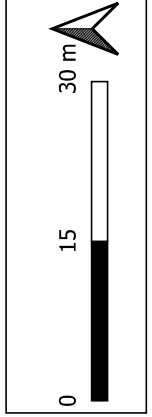
Limites de site CIRCA





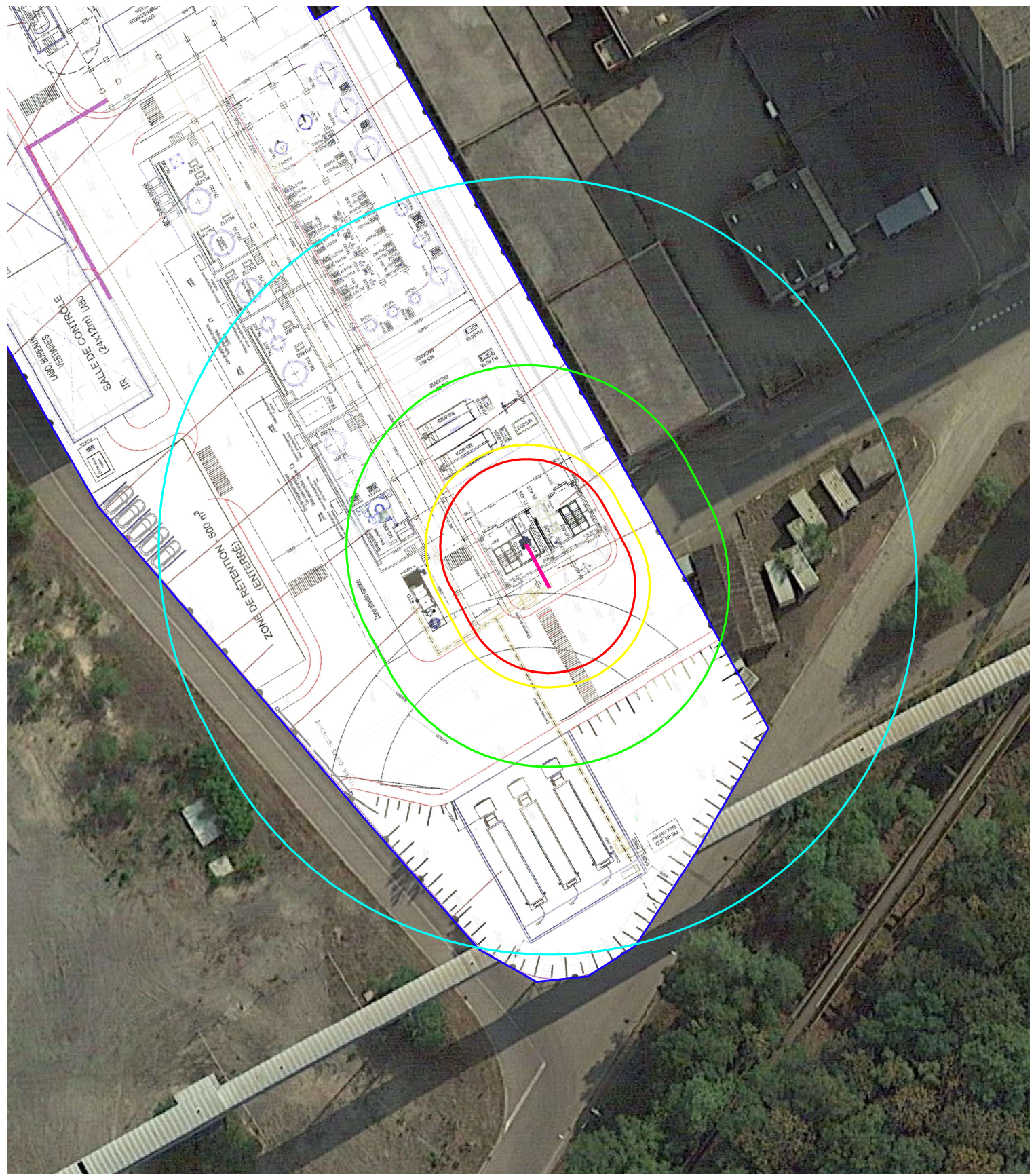
- Légende**
- █ SEI (7 m)
  - █ SEL (5 m)
  - █ SELS (4 m)
  - █ Mur protection
  - █ Tuyauterie H2 enterrée
  - █ Limites de site CIRCA

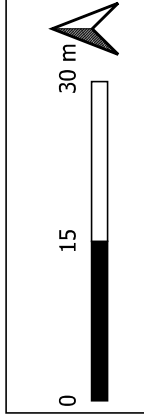




**Légende**

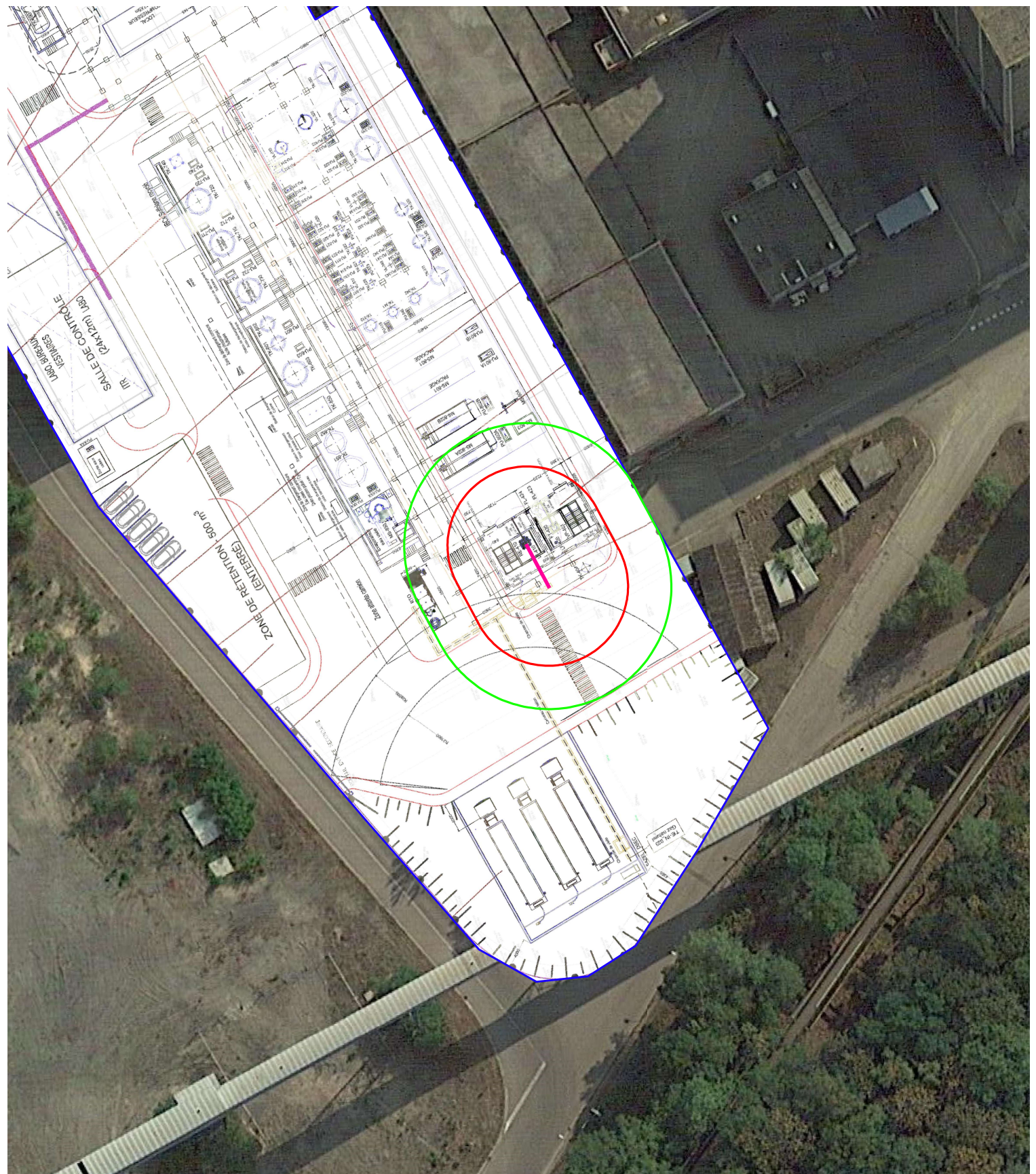
- BV (51 m)
- SEI (25 m)
- SEL (14 m)
- SELS (12 m)
- Tuyauterie H2 aérienne
- Limites de site CIRCA

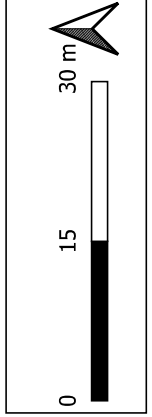




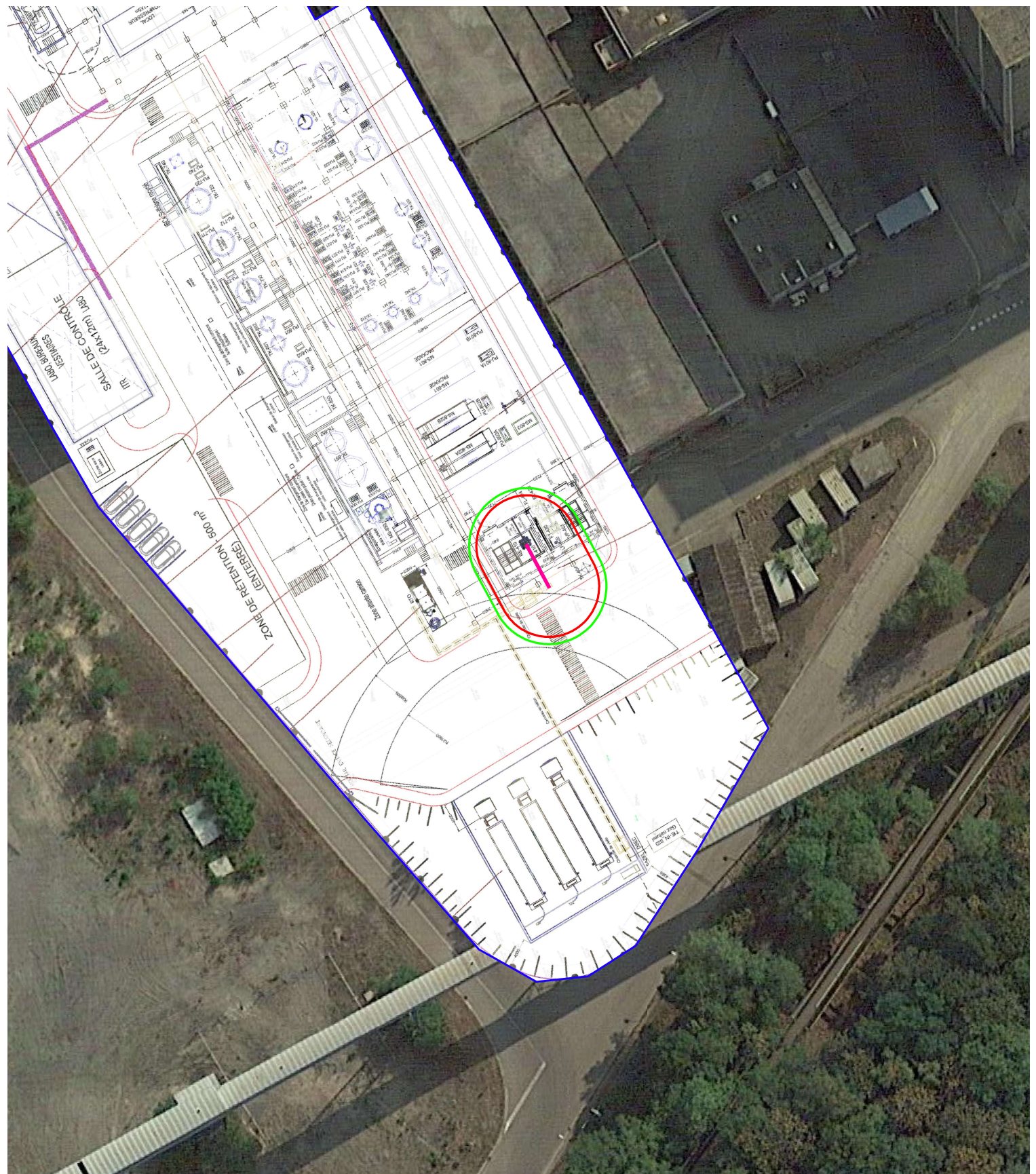
**Légende**

- █ SEI (17 m)
- █ SELS/SEL (11 m)
- █ Tuyauterie H2 aérienne
- █ Limites de site CIRCA





- Légende**
- SEI (8 m)
  - SELS (7 m)
  - Tuyauterie H2 aérienne
  - Limites de site CIRCA



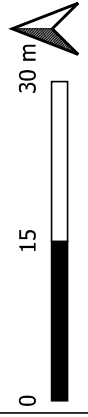
# Scénario 13 - Éclatement oxydateur thermique

Effets de surpression  
Projet ReSolute



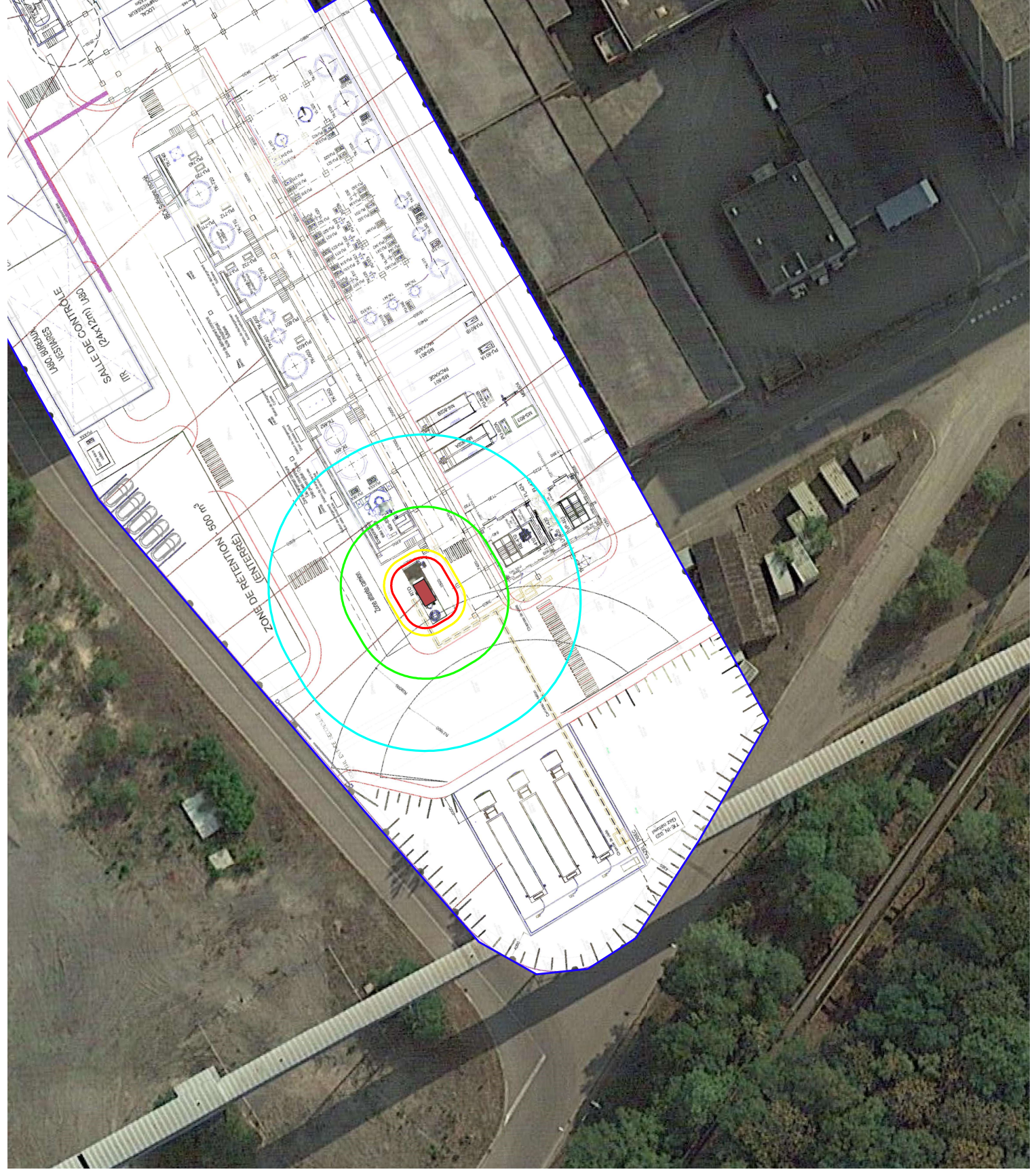
Date : 27.10.2023

Version : 1



## Légende

- BV (20 m)
- SEI (10 m)
- SEL (4 m)
- SELS (3 m)
- Oxydateur thermique
- Limites de site CIRCA



Agence IdF - 23 rue Colbert  
78 180 Montigny-Le-Bretonneux  
Tel : 01 61 38 37 33 - [www.iso-ingenierie.com](http://www.iso-ingenierie.com)