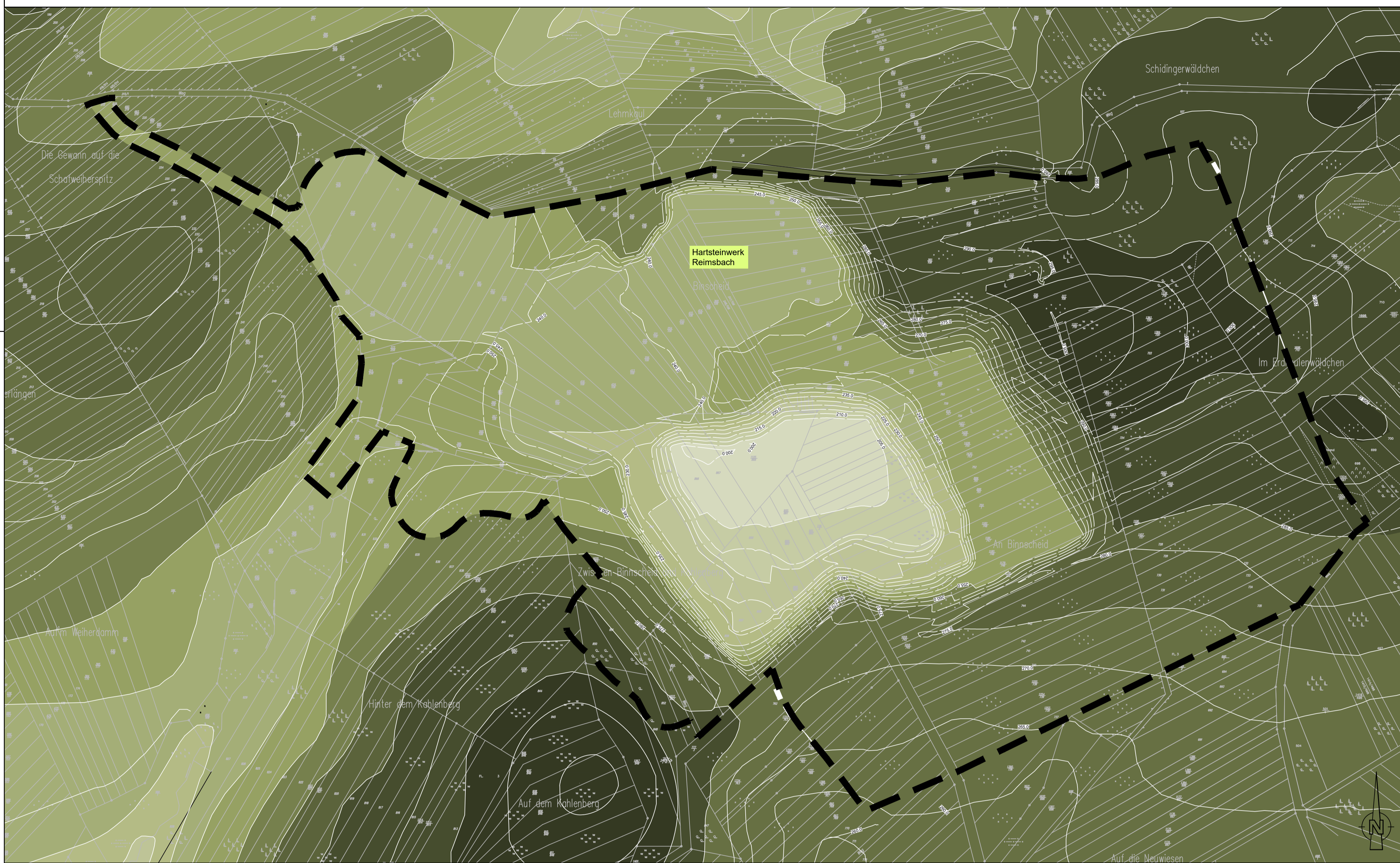
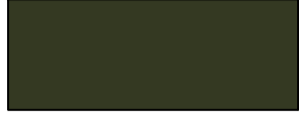










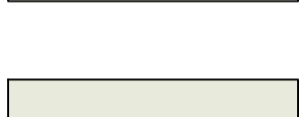



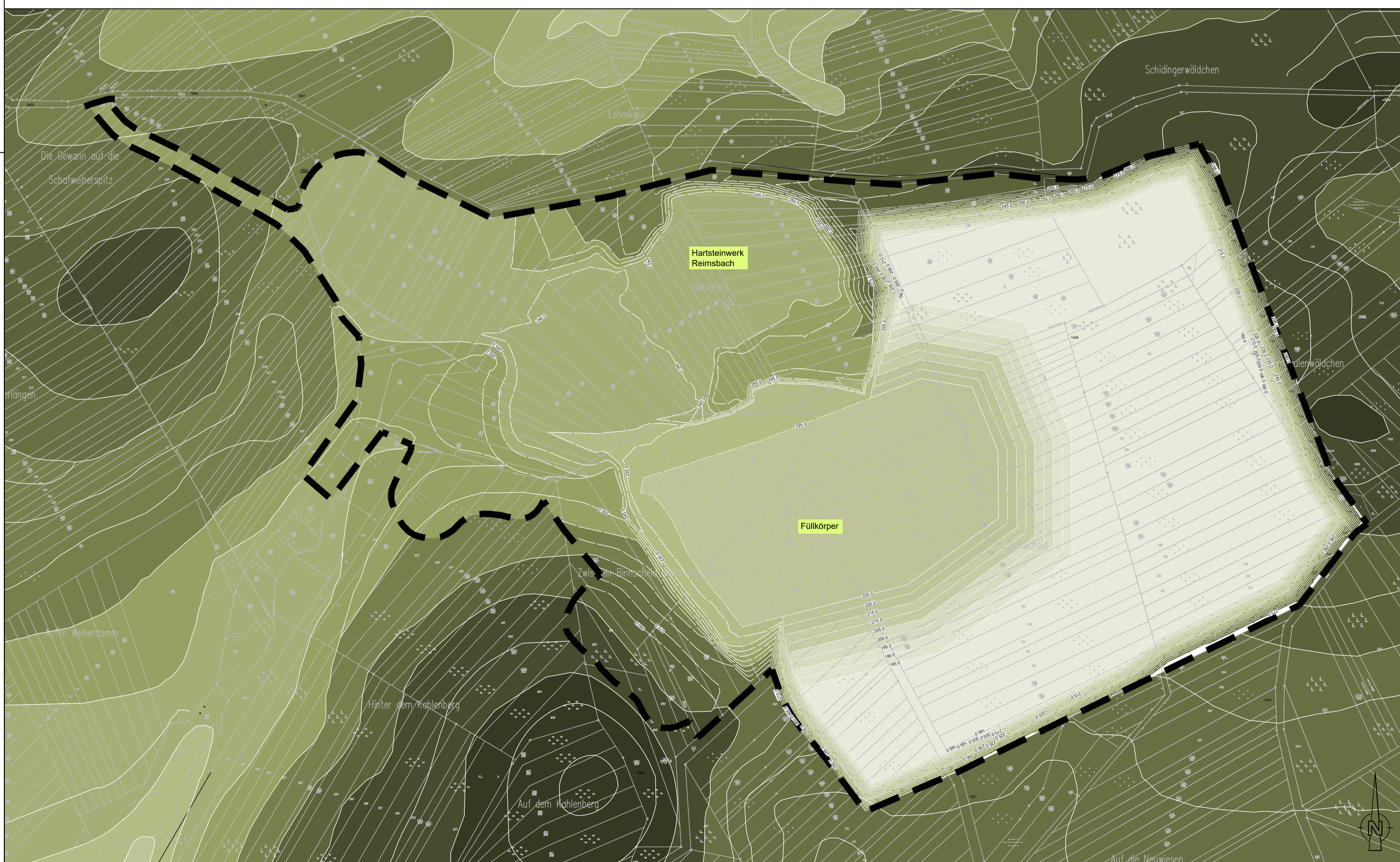
# Höhenschichten Bestand



# LEGENDE

-  295m ü. NN - 305m ü. NN
-  285m ü. NN - 295m ü. NN
-  275m ü. NN - 285m ü. NN
-  265m ü. NN - 275m ü. NN
-  255m ü. NN - 265m ü. NN
-  245m ü. NN - 255m ü. NN
-  235m ü. NN - 245m ü. NN
-  225m ü. NN - 235m ü. NN
-  215m ü. NN - 225m ü. NN
-  205m ü. NN - 215m ü. NN
-  195m ü. NN - 205m ü. NN
-  185m ü. NN - 195m ü. NN
-  185m ü. NN

# Höhenschichten Endzustand



Der Auftraggeber	Bauherr
Dillingen, den	

Projekt	Erweiterung Hartsteinwerk Beckingen / Reimsbach
---------	---

Planinhalt	Höhenschichtenplan
------------	--------------------

<b>INGENIEURBÜRO PAULUS &amp; PARTNER</b> Hauptplatz im Gewerbepark 5 66667 Wadern Tel. +49 6871 90090 Fax +49 6871 90093 Bironiederlassungen Am Dreiländereck 2 66726 Pöhl Tel. +49 6867 59000 Fax +49 6867 240000 Kochstraße 13 54280 Trier Tel. +49 651 9709810 Fax +49 651 9709815 www.paulus-partner.de info@paulus-partner.de Ingenieurbüro P. & P. GmbH Geschäftsführer: Edgar Mathmann, Edgar P.		Genehmigungsplanung	
		Entwurfsbearbeitung	___Ausfertigung
	Plan-Nr.	1.5	Plan-Index
	Maßstab	1:2000	
Wadern, den 23.11.2021		Datum	Zeichen
Bearbeitet	23.11.2021	Huwer	
Gezeichnet	23.11.2021	Bastian/Huwer	
Geprüft	23.11.2021	Mohsman	

Nr.	Datum	Art der Änderung	Bearbeitet	Gezeichnet	Geprüft