






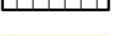


Anthornshook Bürgerwind GbR

Abstand Wohnbebauung

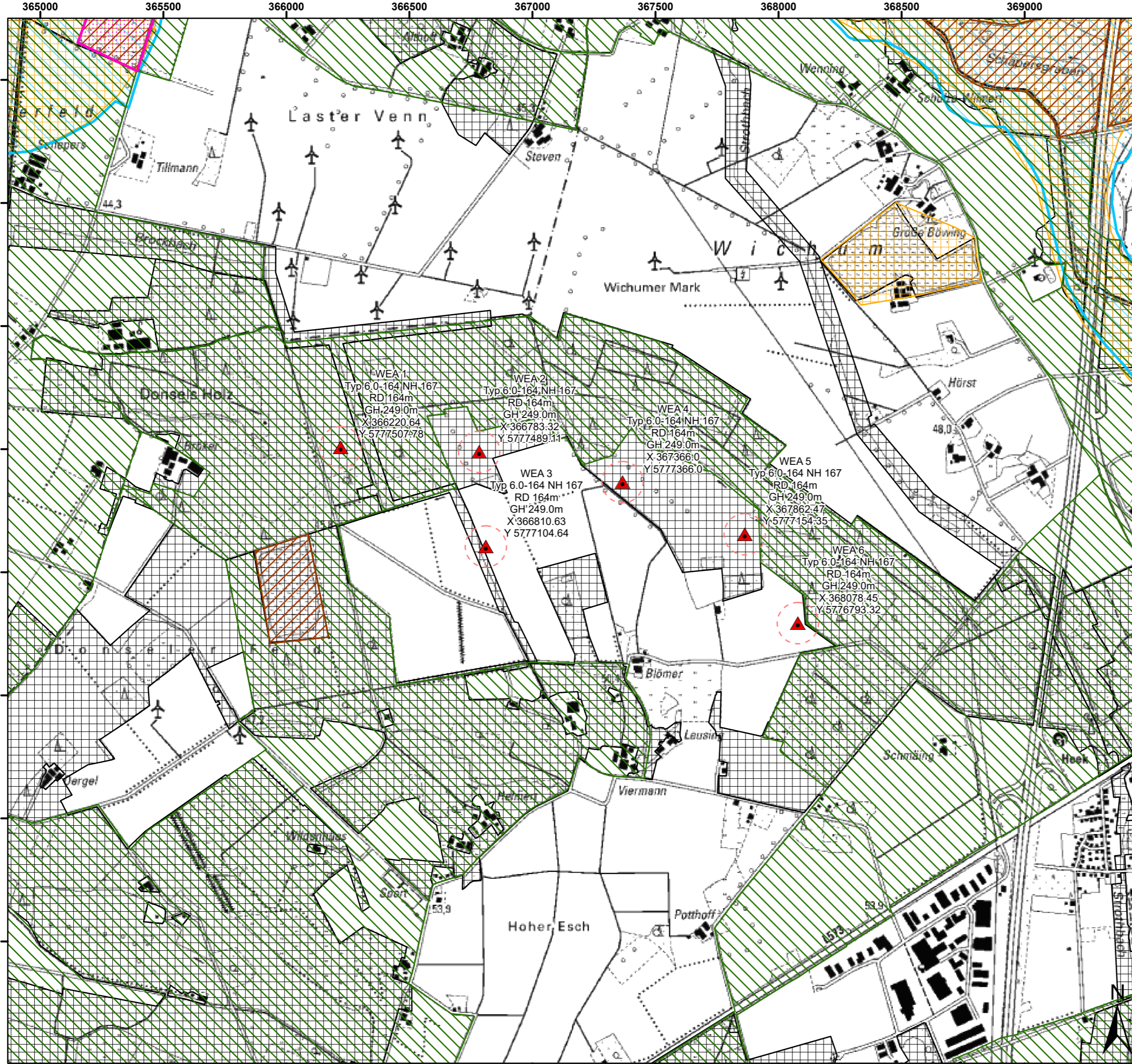
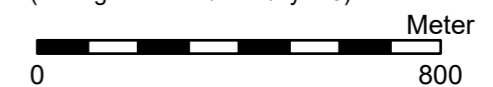
-  Geplante WEA
-  Rotorkreis
-  FFH Schutzgebiet
-  Naturschutzgebiet
-  Landschaftsschutzgebiet
-  Gebiete zum Schutz der Natur
-  Biotopverbundflächen
-  Bereiche für den Schutz der Natur



Koordinatensystem: ETRS 1989 UTM Zone 32N
 Stand: 24.04.2024
 Bearbeiter: Cantauw-P
 Maßstab: 1:15.000

BBWind Projektberatungsgesellschaft mbH
 Schorlemerstraße 12 - 14
 48143 Münster
 www.bbwind.de

© Land NRW (2024)
 Datenlizenz Deutschland - Namensnennung - Version 2.0
 (www.govdata.de/dl-de/by-2-0)



- WEA 1
 Typ 6,0-164 NH 167
 RD 164m
 GH 249,0m
 X 366220,64
 Y 5777507,78
- WEA 2
 Typ 6,0-164 NH 167
 RD 164m
 GH 249,0m
 X 366783,32
 Y 5777489,11
- WEA 3
 Typ 6,0-164 NH 167
 RD 164m
 GH 249,0m
 X 366810,63
 Y 5777104,64
- WEA 4
 Typ 6,0-164 NH 167
 RD 164m
 GH 249,0m
 X 367366,0
 Y 5777366,0
- WEA 5
 Typ 6,0-164 NH 167
 RD 164m
 GH 249,0m
 X 367862,47
 Y 5777154,35
- WEA 6
 Typ 6,0-164 NH 167
 RD 164m
 GH 249,0m
 X 368078,45
 Y 5776793,32