

NOTES :

MATERIAL: SIEHE JEWEILIGE EINZELTEILE/SEE EACH PIECE OF PART  
 WEIGHT: ASSEMBLY (STEEL SECTION ONLY): 162560 Kg  
 TOP SECTION: 44195 Kg  
 MID SECTION A: 54460 Kg  
 MID SECTION B: 63905 Kg

1. DIE AUSFUHRUNG DER OBEREN SEKTION ENTSPRECHEND DER Z.-Nr.: 452W1046  
 DESIGN OF TOP SECTION ACC. TO DWG.-NO. 452W1046

2. DIE AUSFUHRUNG DER MITTLEREN SEKTION A ENTSPRECHEND DER Z.-Nr.: 452W1047  
 DESIGN OF MID. SECTION A ACC. TO DWG.-NO. 452W1047

3. DIE AUSFUHRUNG DER MITTLEREN SEKTION B ENTSPRECHEND DER Z.-Nr.: 452W1048  
 DESIGN OF MID. SECTION B ACC. TO DWG.-NO. 452W1048

4. DIE AUSFUHRUNG DER BETONSEKTIONEN, DES ADAPTERS UND DER ANKERBOLZEN ENTSPRECHEND SEPARATER HERSTELLERZEICHNUNG.  
 DESIGN OF CONCRETE SECTIONS, ADAPTER AND ANCHOR BOLTS ACC. TO SEPARATE SUPPLIER DRAWING.

7. DICHTUNGSMATERIAL  
 SEALING COMPOUND

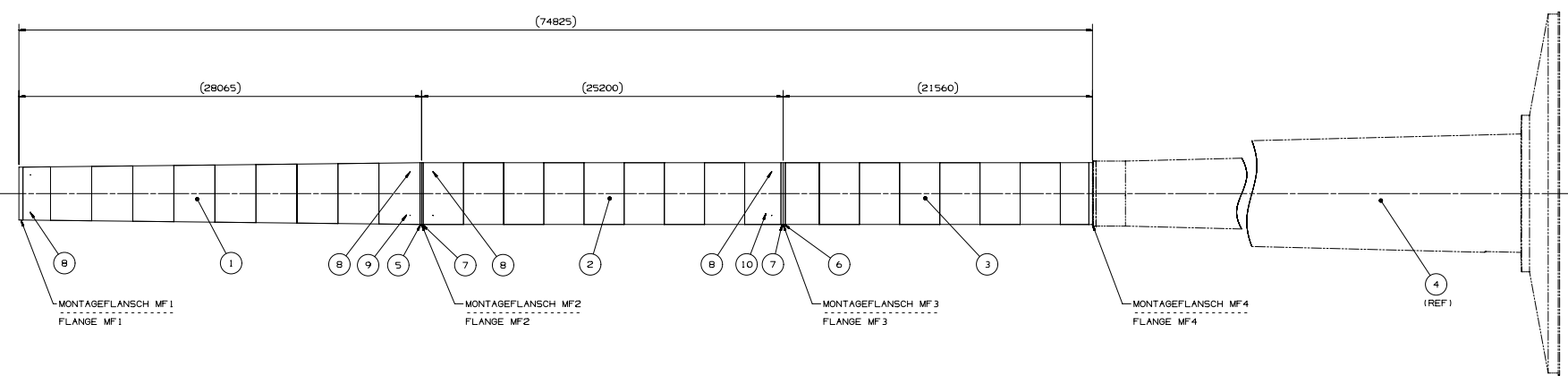
8. VERSCHLUSSKAPPEN  
 PLUGS

9 TO 10. LABELS FLANSCHBOLZEN: POSITION CA. 400MM VOM UNTEREN ENDE DER SEKTION AUF 180° POSITION INNERHALB DES TURMES.  
 LABELS FLANGE BOLTS: TO BE ATTACHED APPROX. 400MM FROM LOWER END OF THE TOWER SECTION AT 180° LOCATION INSIDE OF THE TOWER.

TIGHTENING METHOD: ANZIEHVERFAHREN: KOMBINIERTES VERFAHREN		BREAK-IN-MAINTENANCE (BIM): INBETRIEBNAHMEWARTUNG: 100% NUT ROTATION ANGLE +15° 100% WEITERDREHWINKEL +15°						
FLANGE BOLT SETS: - SIZES SM36 ACC. TO EN14399-4 - HV - 10,9/10 - TZN - SIZES SM39 ACC. DASK-R1 021 10,9 - TZN (DASK-RICHTLINIE 021, SEPT. 2013) - EACH BOLT SET CONSISTING OUT OF 1X BOLT, 1X NUT, 2X WASHER, LUBRICATED WITH MOS2								
FLANSCHBOLZENGARNITUREN: - GROSSESN SM36 GEMAES EN14399-4 - HV - 10,9/10 - TZN - GROSSESN SM39 GEMAES DASK-R1 021 10,9 - TZN (DASK-RICHTLINIE 021, SEPT. 2013) - JEDE GARNITUR BESTEHEND AUS 1X SCHRAUBE, 1X MUTTER, 2X SCHEIBE, GESCHMIERT MIT MOS2								
POS.	FLANGE FLANSCH	QTY ANZ.	SIZE GROSSE	MOMENT + NUT ANZIEHMOMENT + WEITERDREHWINKEL	LIMIT TORQUE	SOCKET DIM. (mm)		TOOL GEOMETRY RADIUS R (mm)
5	MF2	144	M36x235	1920Nm + 90°	5600Nm	A/F / SW	DIA	≤S3
6	MF3	121	M48x310	4450Nm + 90°	13000Nm	60-HEX	≤97	≤65

453W6853		REV. NO. 1	
REVZONE	DESCRIPTION	DATE (YYYY-MM-DD)	APPROVED
-	SEE PLM FOR DETAILS		

REVISE ON CAD ONLY  
 NX PART: 453W6853



6.X 167mHH HYBRID TOWER

Anlage zum Prüfbericht zur Typenprüfung  
 Nr.: T-700321-1 Rev. 1  
 vom 03. Juni 2022

© COPYRIGHT 2021 General Electric Company(USA).  
 All rights reserved. The information herein is proprietary and technically exclusive content that is solely owned by General Electric Company and/or its affiliates. This information shall be deemed by the rest of the world to have contractually agreed to make no disclosure, reproduction of any nature, modifications, disclosure, or use any portion of this material, except as is expressly authorized in writing by General Electric Company and/or its affiliates and/or its affiliates.

UNLESS OTHERWISE SPECIFIED, DIMENSIONS ARE IN MILLIMETERS		TYPE ASSEMBLY	
TOLERANCE CLASS: N/A	DRAWN SEE PLM	DRAWN DATE 1999-MM-DD	2020-11-20
FIRST ANGLE PROJECTION	CHECK SEE PLM	CHECK DATE 1999-MM-DD	
	ENGRD DATE 1999-MM-DD	ENGRD DATE 1999-MM-DD	
	ADDITIONAL APPROVALS	REVISION INFORMATION	
	FOR SE USE ONLY		
MATERIAL: N/A	DWG SOURCE: 453W6853	SIZE: A0	CADE CODE: NONE
	DWG NO. 453W6853	SCALE: NONE	APPROXIMATE SHEET 1 OF 1