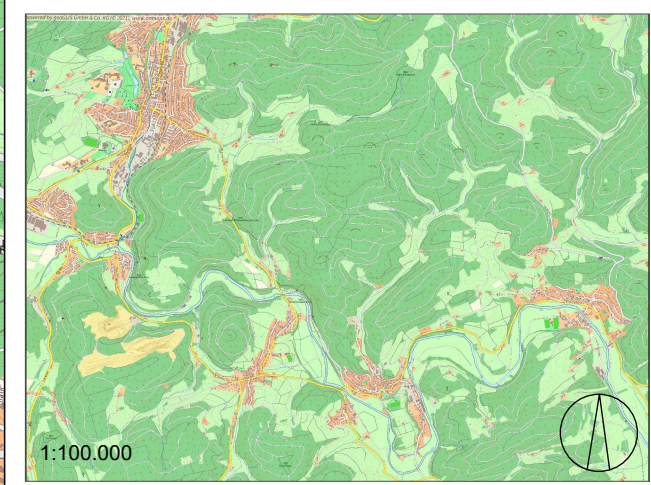


Legende:

-  geplante WEA
-  weitere geplante WEA
-  Immissionsort
-  Abstand Immissionsort - geplante WEA in m



**Planung**  
 Abstände Schattenimmissionsorte WEA EW02

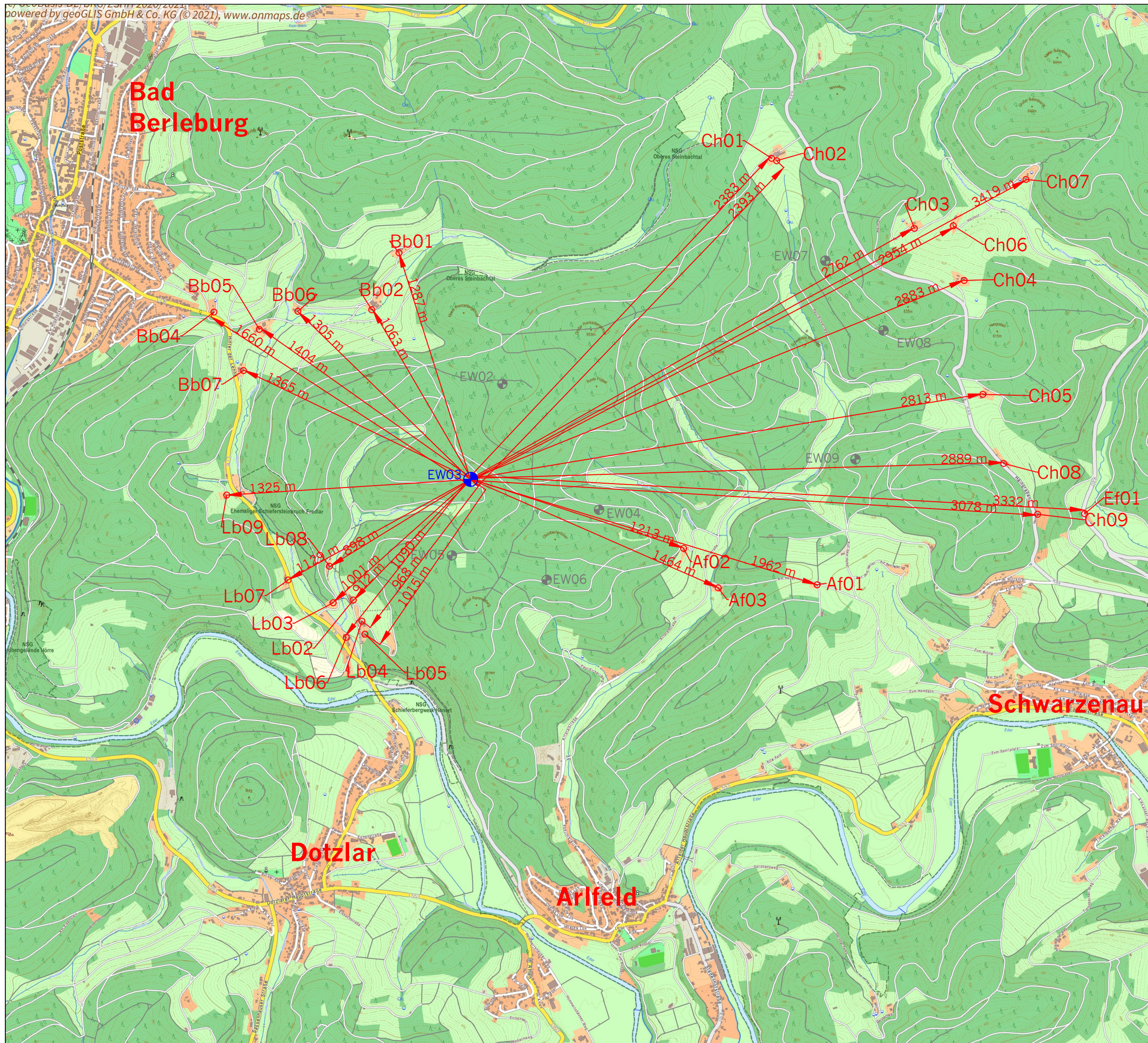
**Windkraftanlagenprojekt**  
**Bad Berleburg**  
 WEA EW02 - EW09





Bundesland: Nordrhein-Westfalen	Stadt: Bad Berleburg
Landkreis: Siegen-Wittgenstein	Gemarkung: div.

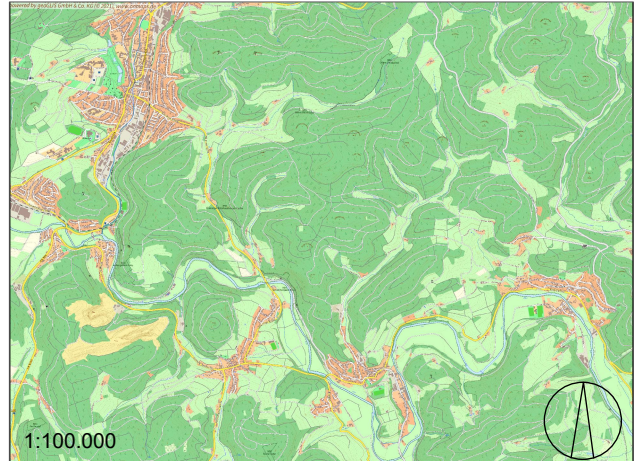
Maßstab 1:30.000	Bearbeiter: E. Lange
Blattgröße: DIN A3	Planungsstand: 06.07.2021

Windenergie Wenger-Rosenau GmbH & Co.KG  
 Dorfstr. 53  
 16816 Neuruppin  
 Tel.: 03391/7758-0  
 Fax: 03391/7758-11  
 Mail: info@wenger-rosenau.com  
 www.wenger-rosenau.com





- Legende:
-  geplante WEA
  -  weitere geplante WEA
  -  Immissionsort
  -  Abstand Immissionsort - geplante WEA in m



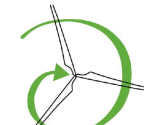
**Planung**  
 Abstände Schattenimmissionsorte WEA EW03

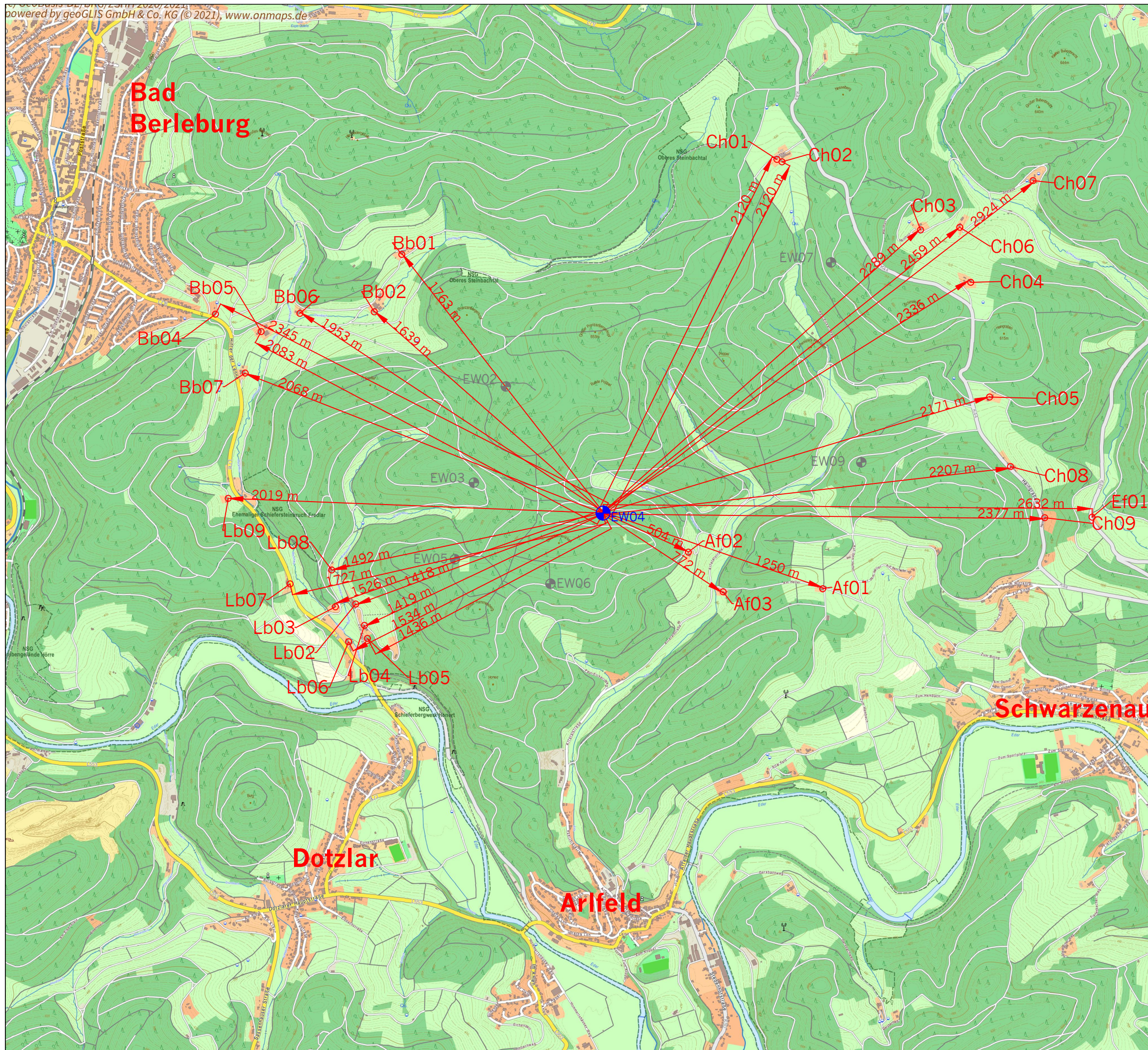
**Windkraftanlagenprojekt**  
**Bad Berleburg**  
 WEA EW02 - EW09

Bundesland: Nordrhein-Westfalen	Stadt: Bad Berleburg
Landkreis: Siegen-Wittgenstein	Gemarkung: div.

Maßstab 1:30.000	Bearbeiter: E. Lange
Blattgröße: DIN A3	Planungsstand: 06.07.2021

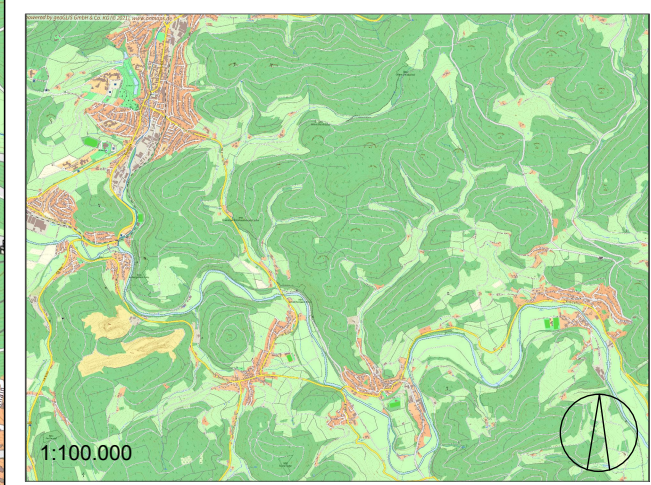
Windenergie Wenger-Rosenau GmbH & Co.KG  
 Dorfstr. 53  
 16816 Neuruppin  
 Tel.: 03391/7758-0  
 Fax: 03391/7758-11  
 Mail: info@wenger-rosenau.com  
 www.wenger-rosenau.com





Legende:

-  geplante WEA
-  weitere geplante WEA
-  Immissionsort
-  Abstand Immissionsort - geplante WEA in m



Planung  
 Abstände Schattenimmissionsorte WEA EW04

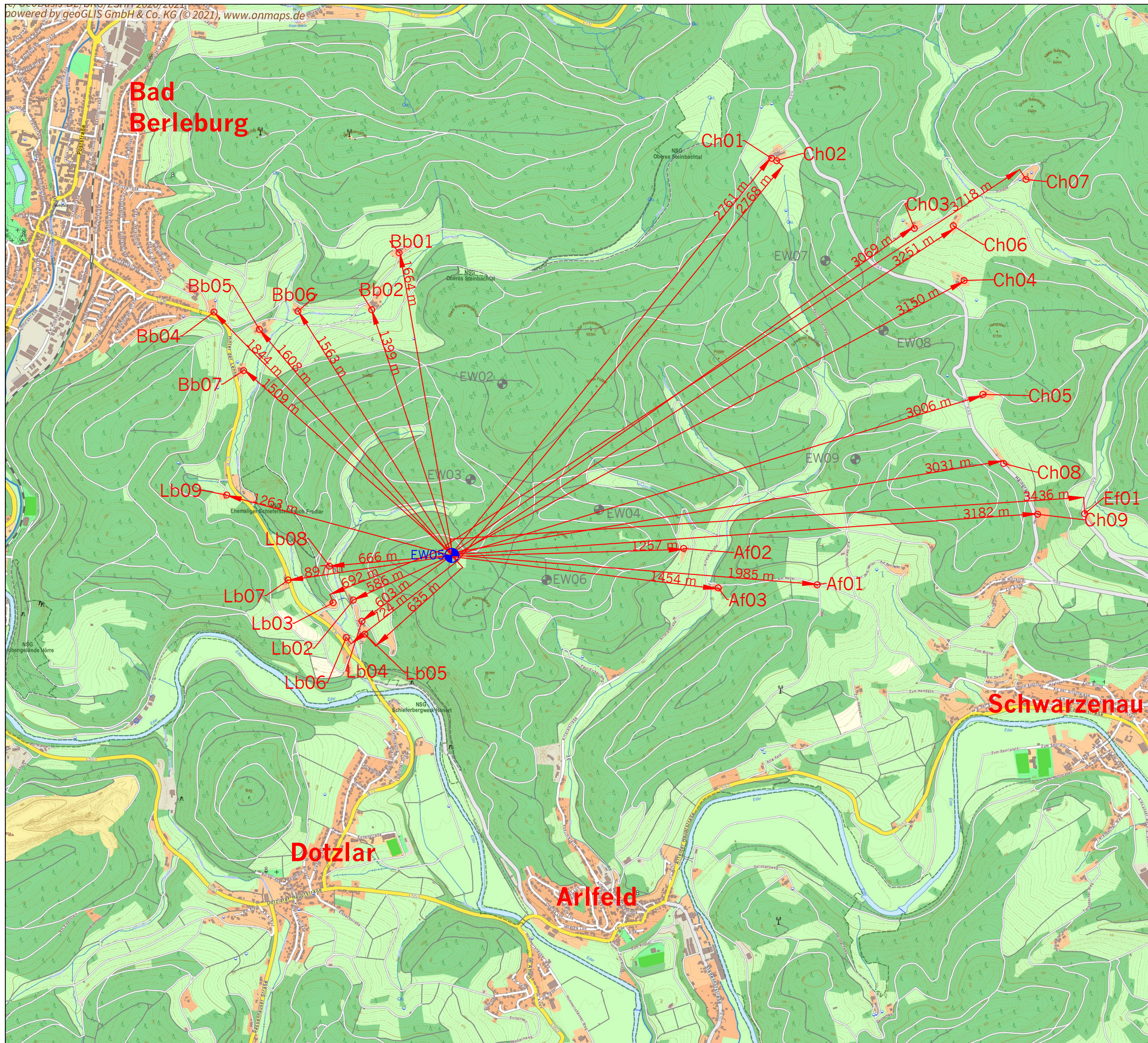
## Windkraftanlagenprojekt Bad Berleburg WEA EW02 - EW09





Bundesland: Nordrhein-Westfalen	Stadt: Bad Berleburg
Landkreis: Siegen-Wittgenstein	Gemarkung: div.

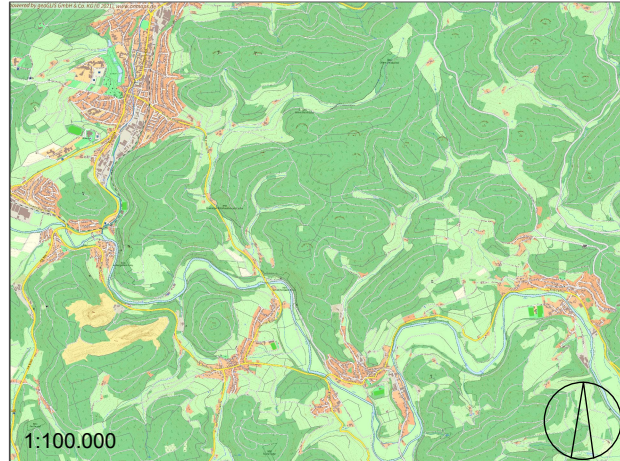
Maßstab 1:30.000	Bearbeiter: E. Lange
Blattgröße: DIN A3	Planungsstand: 06.07.2021

Windenergie Wenger-Rosenau GmbH & Co.KG  
 Dorfstr. 53  
 16816 Neuruppin  
 Tel.: 03391/7758-0  
 Fax: 03391/7758-11  
 Mail: [info@wenger-rosenau.com](mailto:info@wenger-rosenau.com)  
[www.wenger-rosenau.com](http://www.wenger-rosenau.com)





- Legende:
-  geplante WEA
  -  weitere geplante WEA
  -  Immissionsort
  -  Abstand Immissionsort - geplante WEA in m




Planung  
 Abstände Schattenimmissionsorte WEA EW05

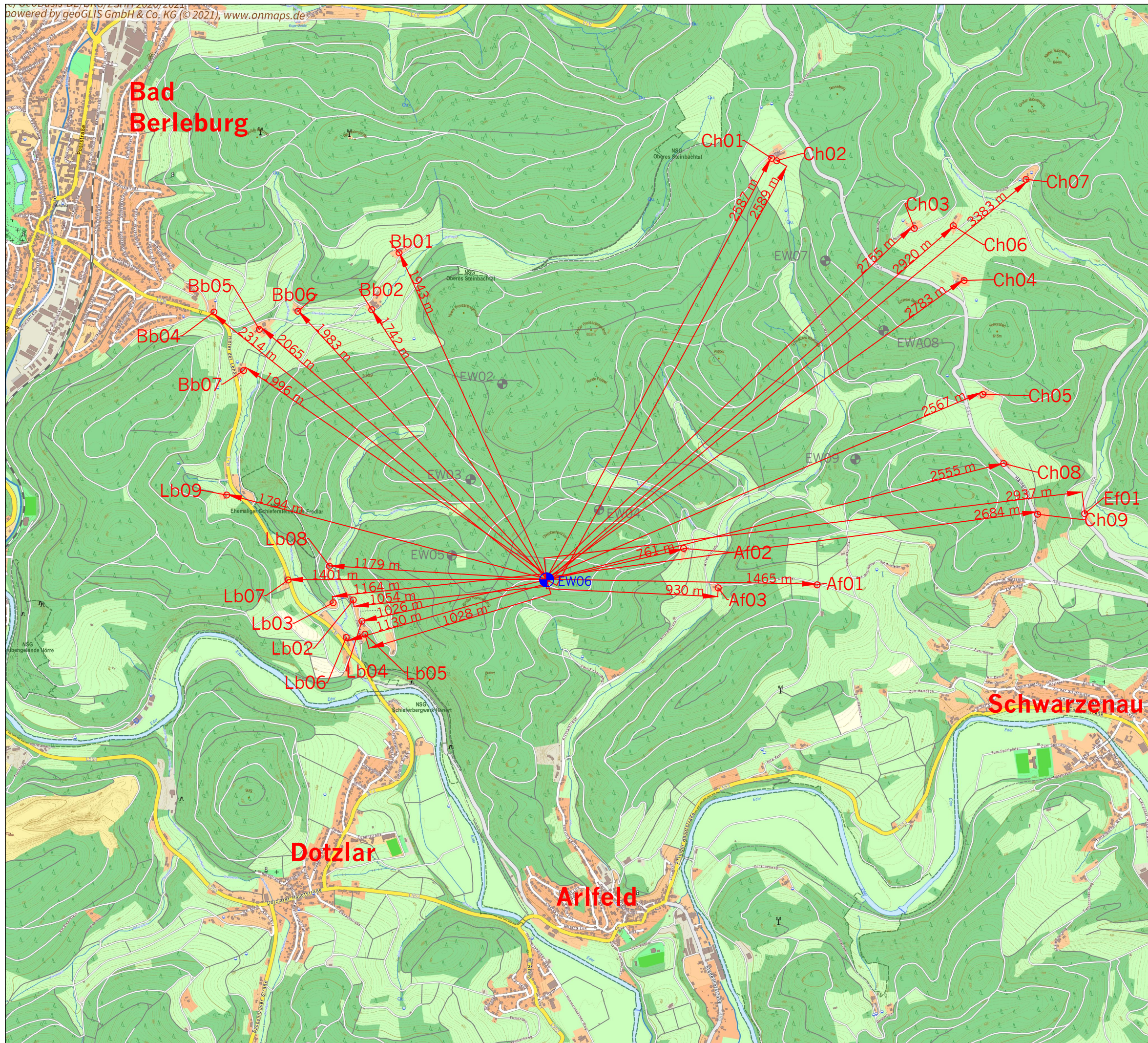
## Windkraftanlagenprojekt Bad Berleburg WEA EW02 - EW09





Bundesland: Nordrhein-Westfalen	Stadt: Bad Berleburg
Landkreis: Siegen-Wittgenstein	Gemarkung: div.

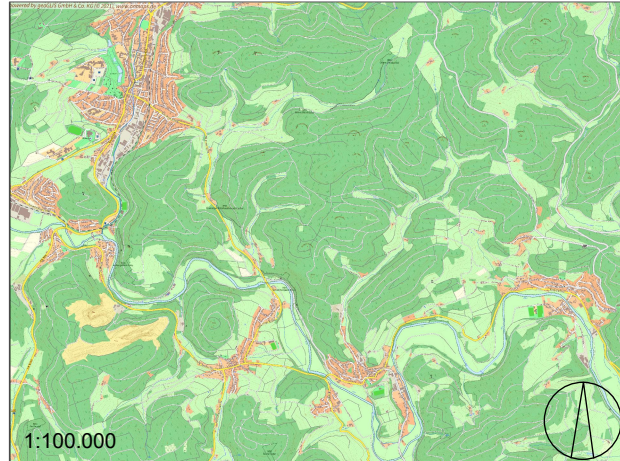
Maßstab 1:30.000	Bearbeiter: E. Lange
Blattgröße: DIN A3	Planungsstand: 06.07.2021

Windenergie Wenger-Rosenau GmbH & Co.KG  
 Dorfstr. 53  
 16816 Neuruppin  
 Tel.: 03391/7758-0  
 Fax: 03391/7758-11  
 Mail: info@wenger-rosenau.com  
 www.wenger-rosenau.com





- Legende:
-  geplante WEA
  -  weitere geplante WEA
  -  Immissionsort
  -  Abstand Immissionsort - geplante WEA in m




**Planung**  
 Abstände Schattenimmissionsorte WEA EW06

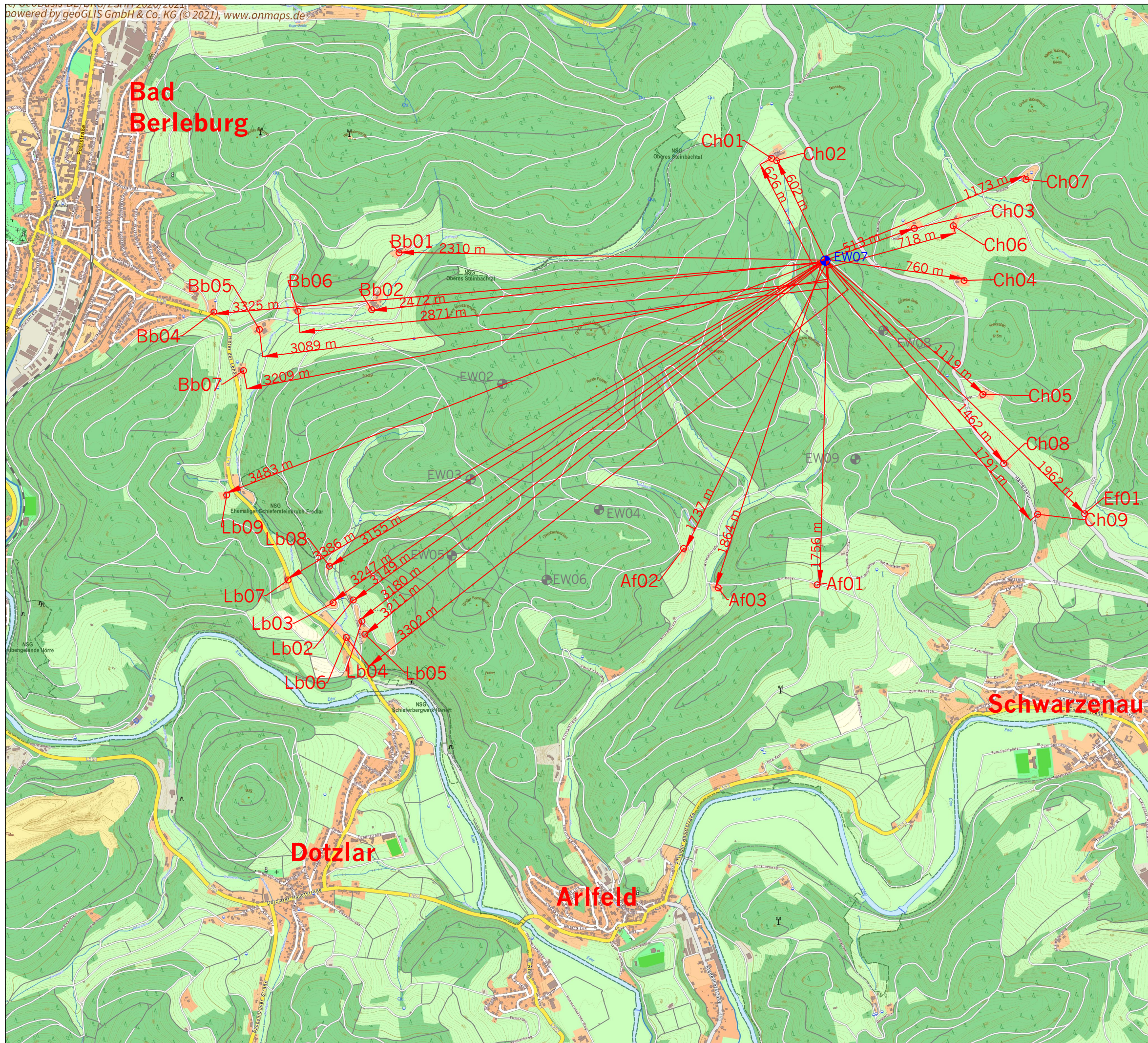
**Windkraftanlagenprojekt**  
 Bad Berleburg  
 WEA EW02 - EW09





Bundesland: Nordrhein-Westfalen	Stadt: Bad Berleburg
Landkreis: Siegen-Wittgenstein	Gemarkung: div.

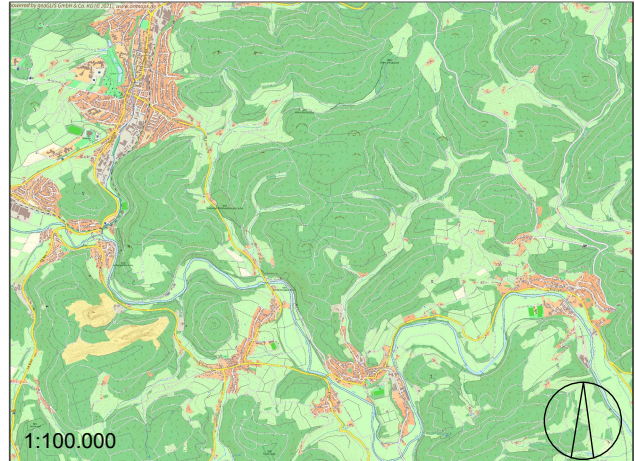
Maßstab 1:30.000	Bearbeiter: E. Lange
Blattgröße: DIN A3	Planungsstand: 06.07.2021

Windenergie Wenger-Rosenau GmbH & Co.KG  
 Dorfstr. 53  
 16816 Neuruppin  
 Tel.: 03391/7758-0  
 Fax: 03391/7758-11  
 Mail: info@wenger-rosenau.com  
 www.wenger-rosenau.com





- Legende:
-  geplante WEA
  -  weitere geplante WEA
  -  Immissionsort
  -  Abstand Immissionsort - geplante WEA in m



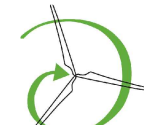
**Planung**  
 Abstände Schattenimmissionsorte WEA EW07

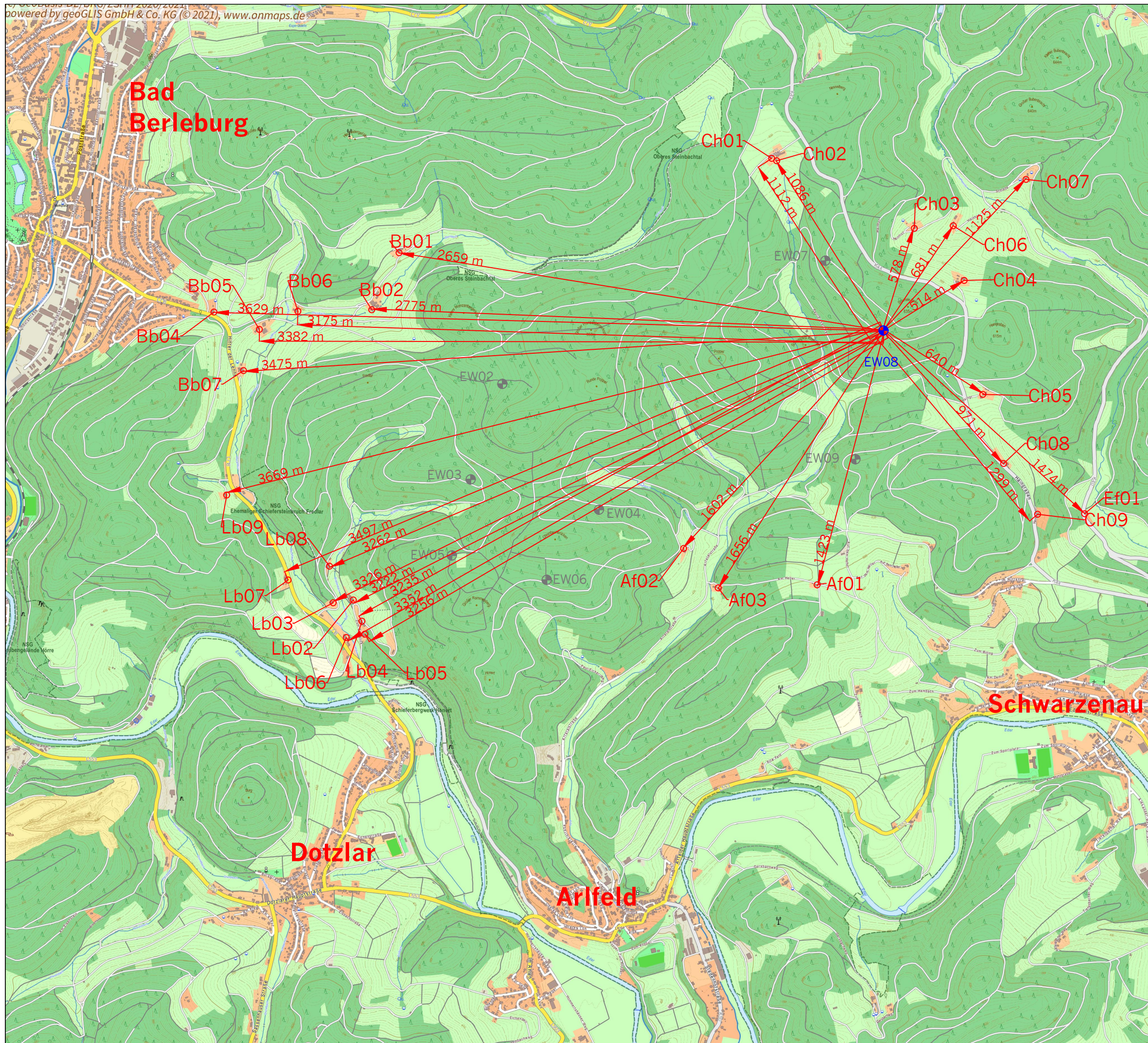
**Windkraftanlagenprojekt**  
**Bad Berleburg**  
 WEA EW02 - EW09





Bundesland: Nordrhein-Westfalen	Stadt: Bad Berleburg
Landkreis: Siegen-Wittgenstein	Gemarkung: div.

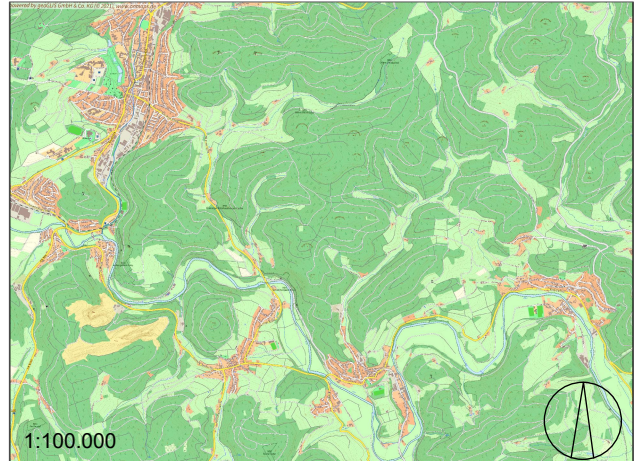
Maßstab 1:30.000	Bearbeiter: E. Lange
Blattgröße: DIN A3	Planungsstand: 06.07.2021

Windenergie Wenger-Rosenau GmbH & Co.KG  
 Dorfstr. 53  
 16816 Neuruppin  
 Tel.: 03391/7758-0  
 Fax: 03391/7758-11  
 Mail: info@wenger-rosenau.com  
 www.wenger-rosenau.com





- Legende:
-  geplante WEA
  -  weitere geplante WEA
  -  Immissionsort
  -  Abstand Immissionsort - geplante WEA in m



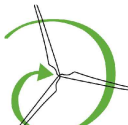
Planung  
Abstände Schattenimmissionsorte WEA EW08

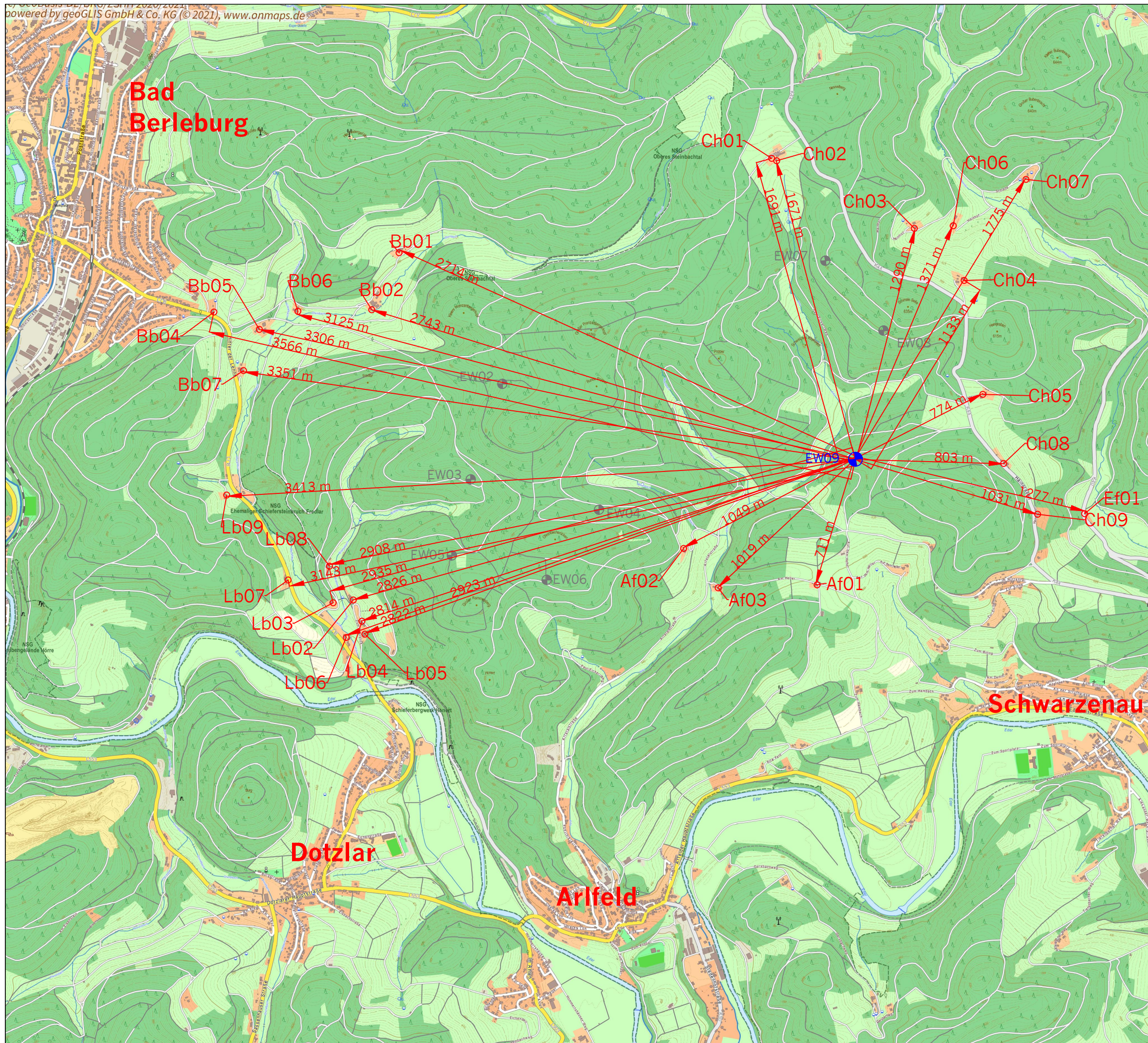
**Windkraftanlagenprojekt  
Bad Berleburg  
WEA EW02 - EW09**





Bundesland: Nordrhein-Westfalen	Stadt: Bad Berleburg
Landkreis: Siegen-Wittgenstein	Gemarkung: div.

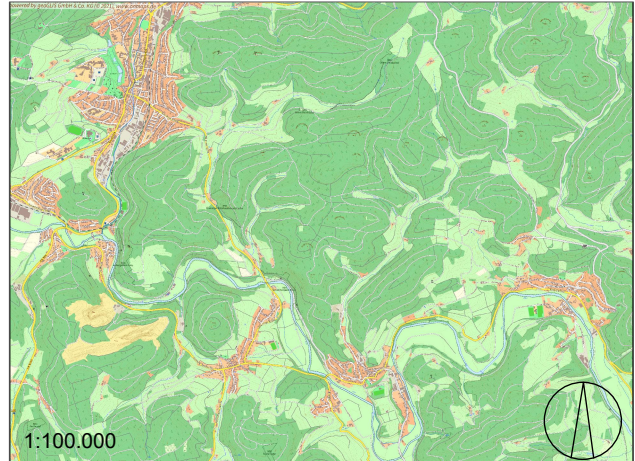
Maßstab 1:30.000	Bearbeiter: E. Lange
Blattgröße: DIN A3	Planungsstand: 06.07.2021

Windenergie Wenger-Rosenau GmbH & Co.KG  
Dorfstr. 53  
16816 Neuruppin  
Tel.: 03391/7758-0  
Fax: 03391/7758-11  
Mail: info@wenger-rosenau.com  
www.wenger-rosenau.com





- Legende:
-  geplante WEA
  -  weitere geplante WEA
  -  Immissionsort
  -  Abstand Immissionsort - geplante WEA in m



Planung  
Abstände Schattenimmissionsorte WEA EW09

## Windkraftanlagenprojekt Bad Berleburg WEA EW02 - EW09

Bundesland: Nordrhein-Westfalen	Stadt: Bad Berleburg
Landkreis: Siegen-Wittgenstein	Gemarkung: div.

Maßstab 1:30.000	Bearbeiter: E. Lange
Blattgröße: DIN A3	Planungsstand: 06.07.2021

Windenergie Wenger-Rosenau GmbH & Co.KG  
Dorfstr. 53  
16816 Neuruppin  
Tel.: 03391/7758-0  
Fax: 03391/7758-11  
Mail: info@wenger-rosenau.com  
www.wenger-rosenau.com

