



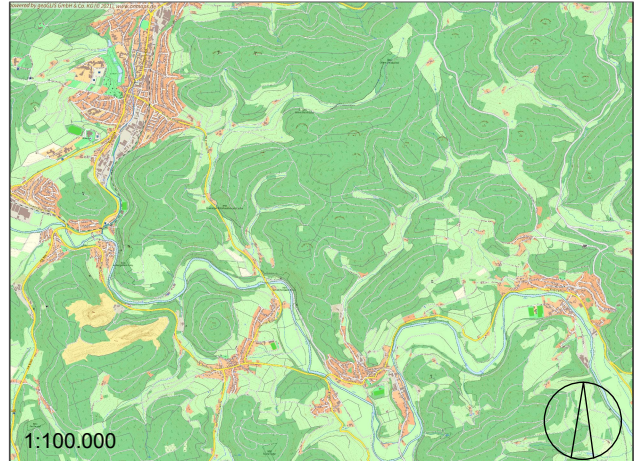


- Legende:
-  geplante WEA
 -  weitere geplante WEA
 -  Immissionsort
 -  Abstand Immissionsort - geplante WEA in m



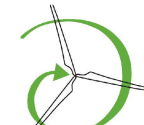
Planung
Abstände Schallimmissionsorte WEA EW02

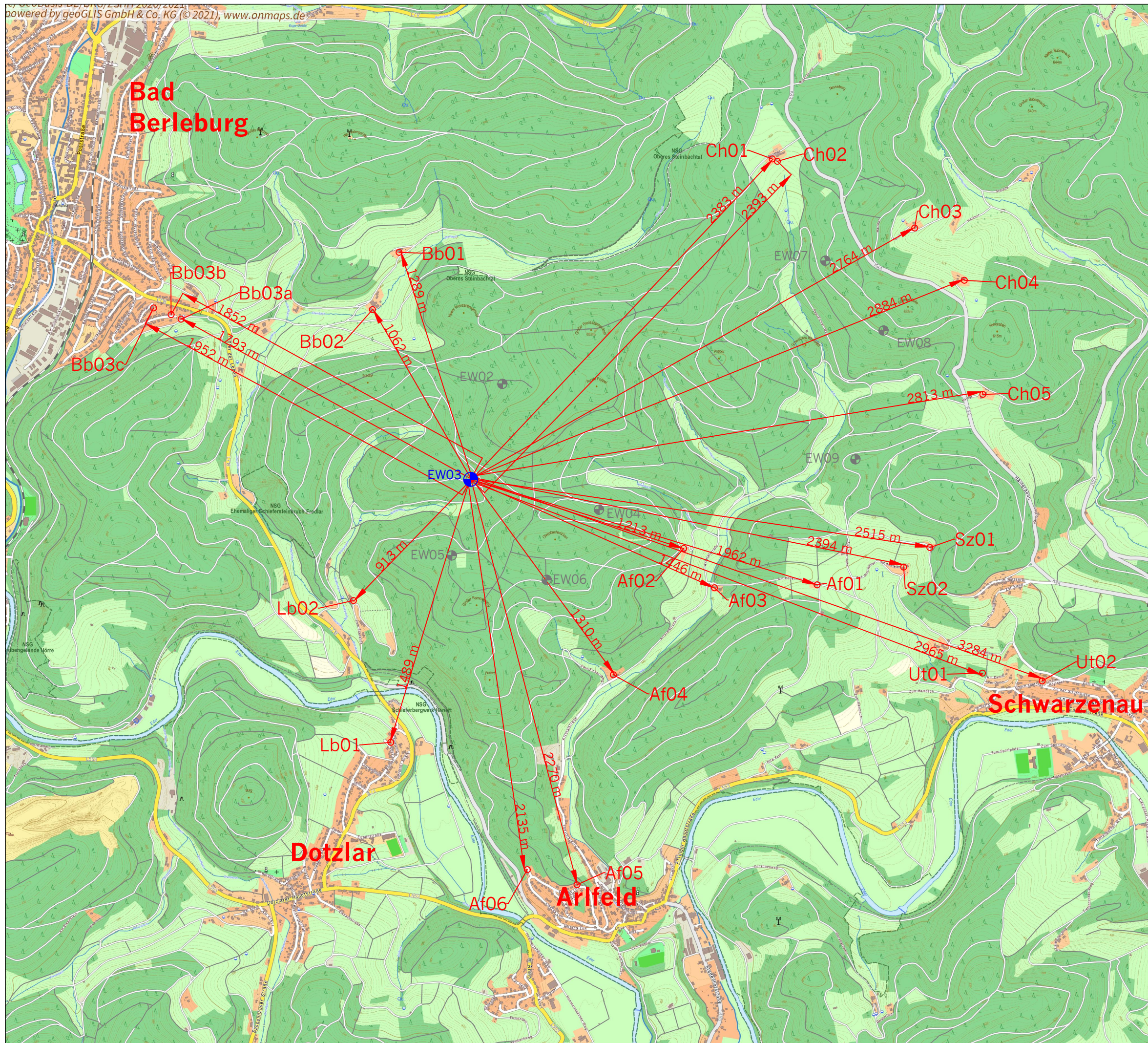
Windkraftanlagenprojekt
Bad Berleburg
WEA EW02 - EW09





Bundesland: Nordrhein-Westfalen	Stadt: Bad Berleburg
Landkreis: Siegen-Wittgenstein	Gemarkung: div.

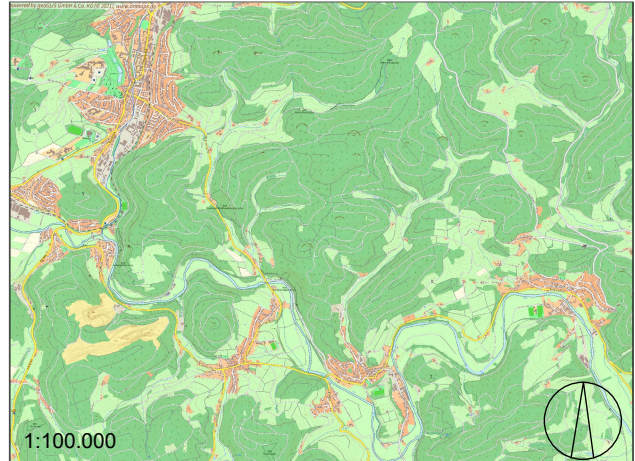
Maßstab 1:30.000	Bearbeiter: E. Lange
Blattgröße: DIN A3	Planungsstand: 06.07.2021

Windenergie Wenger-Rosenau GmbH & Co.KG
 Dorfstr. 53
 16816 Neuruppin
 Tel.: 03391/7758-0
 Fax: 03391/7758-11
 Mail: info@wenger-rosenau.com
 www.wenger-rosenau.com





- Legende:
-  geplante WEA
 -  weitere geplante WEA
 -  Immissionsort
 -  Abstand Immissionsort - geplante WEA in m



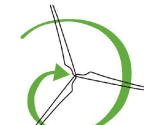
Planung
Abstände Schallimmissionsorte WEA EW03

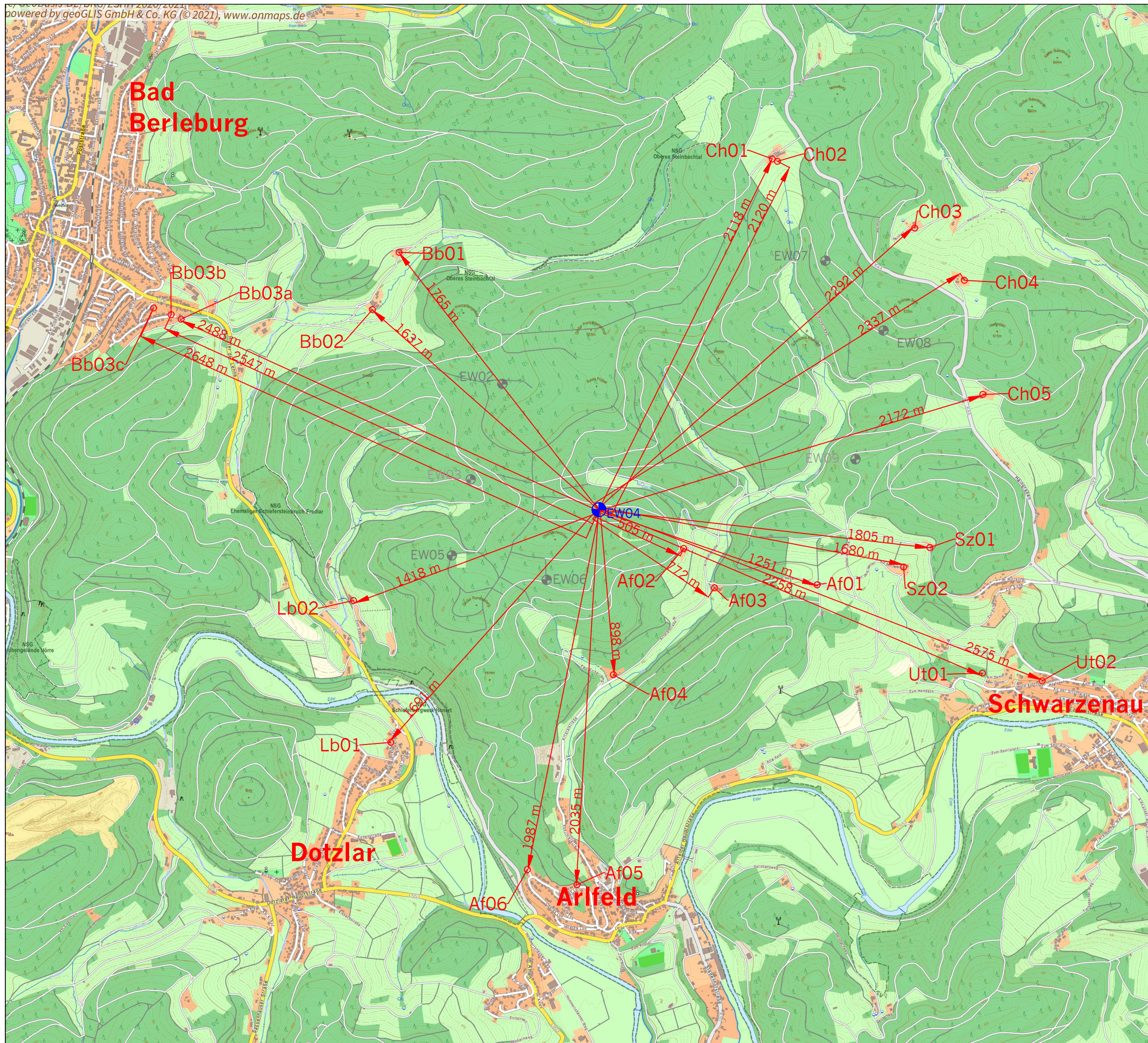
Windkraftanlagenprojekt
Bad Berleburg
WEA EW02 - EW09





Bundesland: Nordrhein-Westfalen	Stadt: Bad Berleburg
Landkreis: Siegen-Wittgenstein	Gemarkung: div.

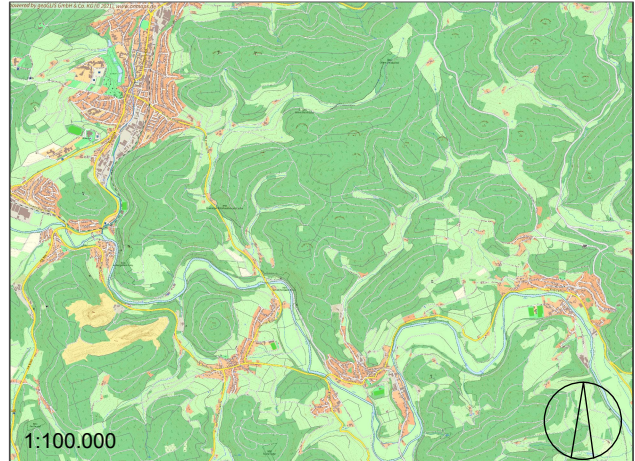
Maßstab 1:30.000	Bearbeiter: E. Lange
Blattgröße: DIN A3	Planungsstand: 06.07.2021

Windenergie Wenger-Rosenau GmbH & Co.KG
 Dorfstr. 53
 16816 Neuruppin
 Tel.: 03391/7758-0
 Fax: 03391/7758-11
 Mail: info@wenger-rosenau.com
 www.wenger-rosenau.com





- Legende:
-  geplante WEA
 -  weitere geplante WEA
 -  Immissionsort
 -  Abstand Immissionsort - geplante WEA in m



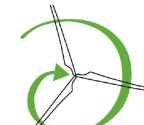
Planung
Abstände Schallimmissionsorte WEA EW04

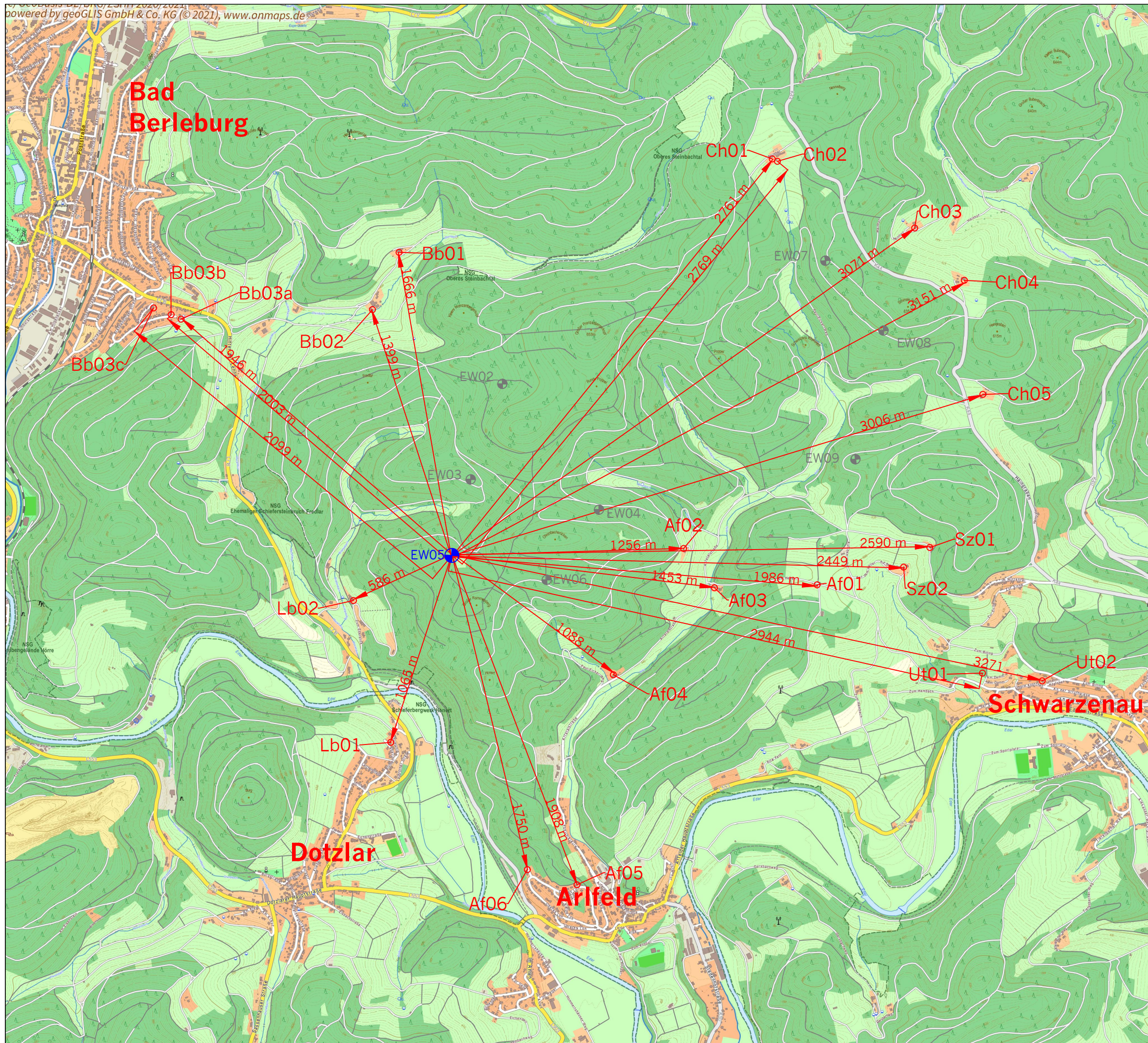
Windkraftanlagenprojekt
Bad Berleburg
WEA EW02 - EW09





Bundesland: Nordrhein-Westfalen	Stadt: Bad Berleburg
Landkreis: Siegen-Wittgenstein	Gemarkung: div.

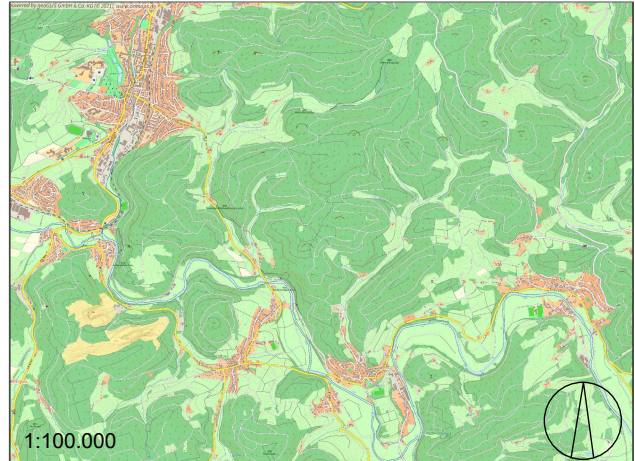
Maßstab 1:30.000	Bearbeiter: E. Lange
Blattgröße: DIN A3	Planungsstand: 06.07.2021

Windenergie Wenger-Rosenau GmbH & Co.KG
 Dorfstr. 53
 16816 Neuruppin
 Tel.: 03391/7758-0
 Fax: 03391/7758-11
 Mail: info@wenger-rosenau.com
 www.wenger-rosenau.com





- Legende:
-  geplante WEA
 -  weitere geplante WEA
 -  Immissionsort
 -  Abstand Immissionsort - geplante WEA in m



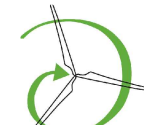
Planung
Abstände Schallimmissionsorte WEA EW05

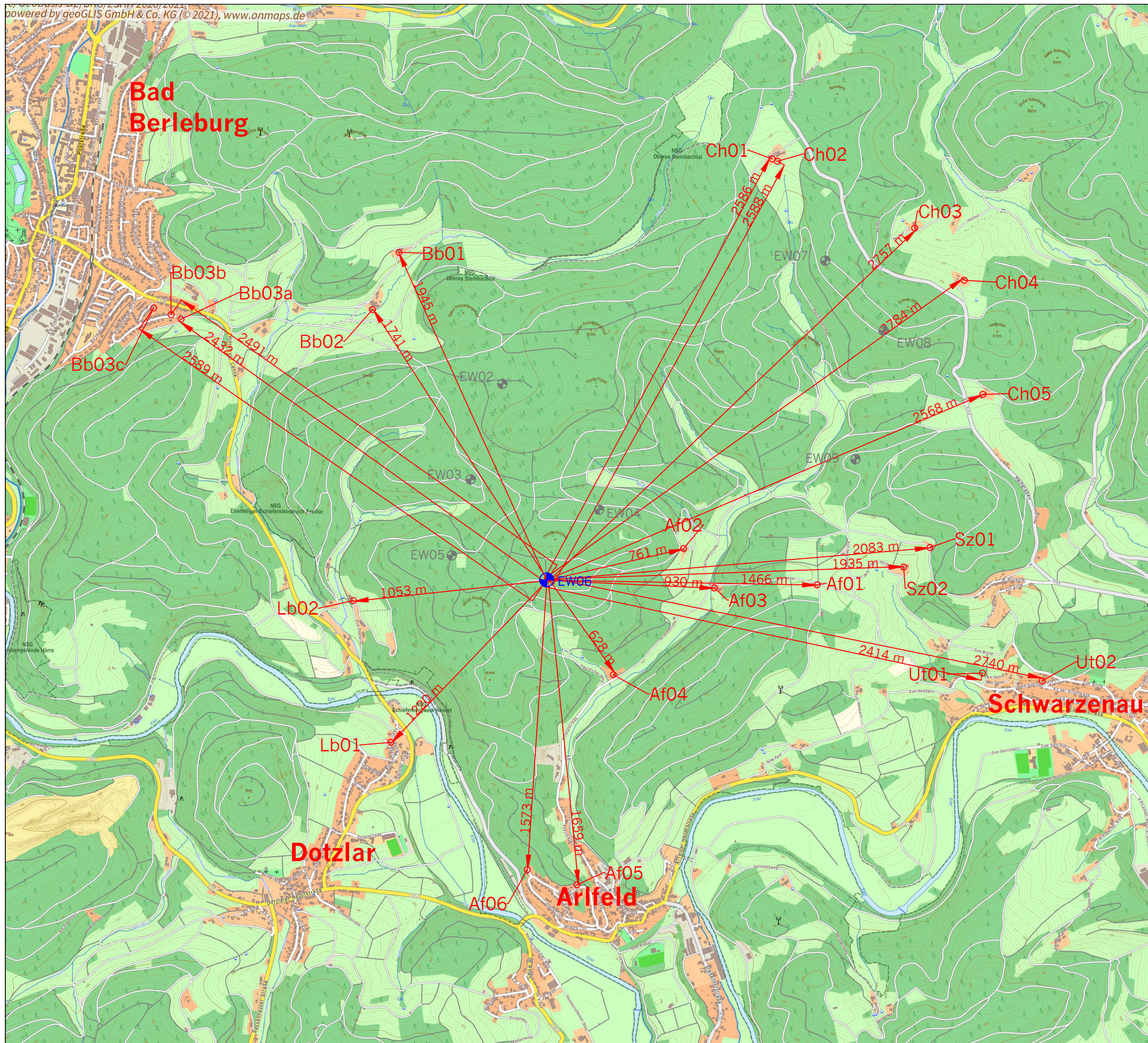
Windkraftanlagenprojekt
Bad Berleburg
WEA EW02 - EW09





Bundesland: Nordrhein-Westfalen	Stadt: Bad Berleburg
Landkreis: Siegen-Wittgenstein	Gemarkung: div.

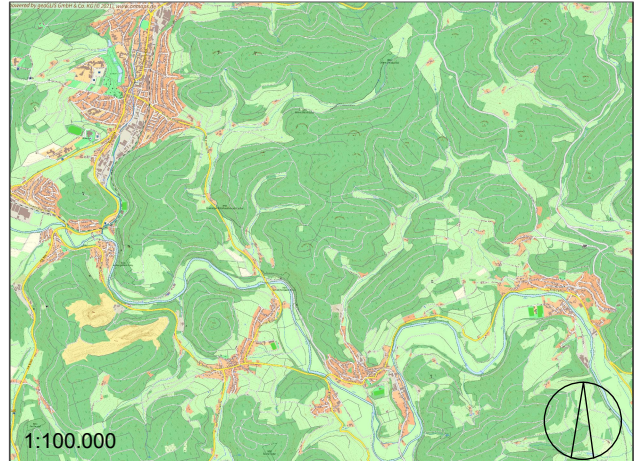
Maßstab 1:30.000	Bearbeiter: E. Lange
Blattgröße: DIN A3	Planungsstand: 06.07.2021

Windenergie Wenger-Rosenau GmbH & Co.KG
 Dorfstr. 53
 16816 Neuruppin
 Tel.: 03391/7758-0
 Fax: 03391/7758-11
 Mail: info@wenger-rosenau.com
 www.wenger-rosenau.com





- Legende:
-  geplante WEA
 -  weitere geplante WEA
 -  Immissionsort
 -  Abstand Immissionsort - geplante WEA in m



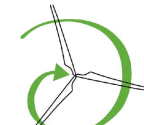
Planung
Abstände Schallimmissionsorte WEA EW06

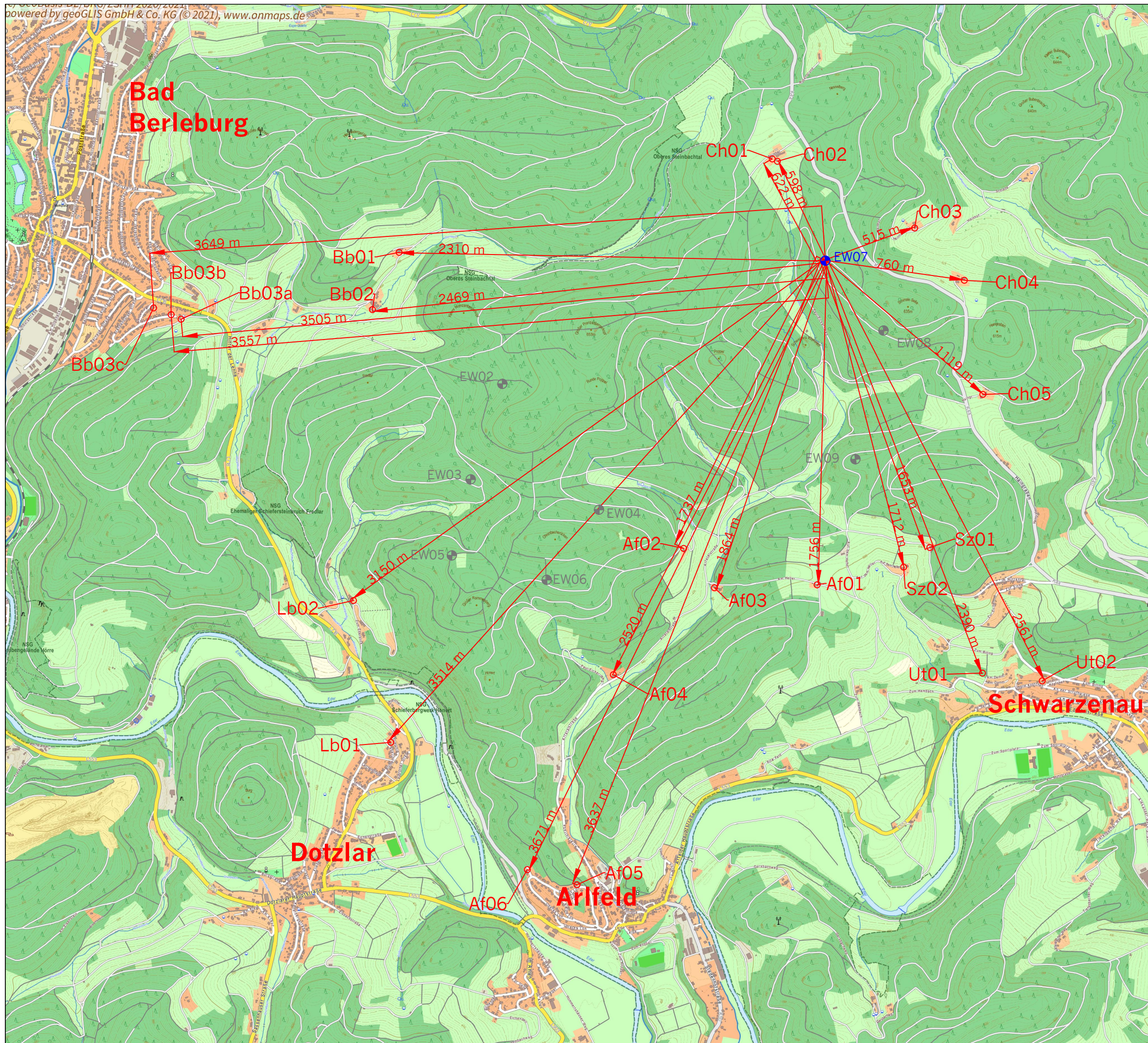
Windkraftanlagenprojekt
Bad Berleburg
WEA EW02 - EW09





Bundesland: Nordrhein-Westfalen	Stadt: Bad Berleburg
Landkreis: Siegen-Wittgenstein	Gemarkung: div.

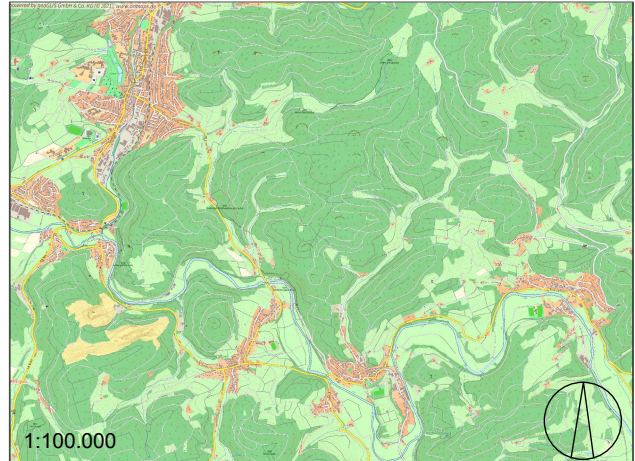
Maßstab 1:30.000	Bearbeiter: E. Lange
Blattgröße: DIN A3	Planungsstand: 06.07.2021

Windenergie Wenger-Rosenau GmbH & Co.KG
 Dorfstr. 53
 16816 Neuruppin
 Tel.: 03391/7758-0
 Fax: 03391/7758-11
 Mail: info@wenger-rosenau.com
 www.wenger-rosenau.com





- Legende:
-  geplante WEA
 -  weitere geplante WEA
 -  Immissionsort
 -  Abstand Immissionsort - geplante WEA in m

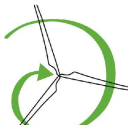


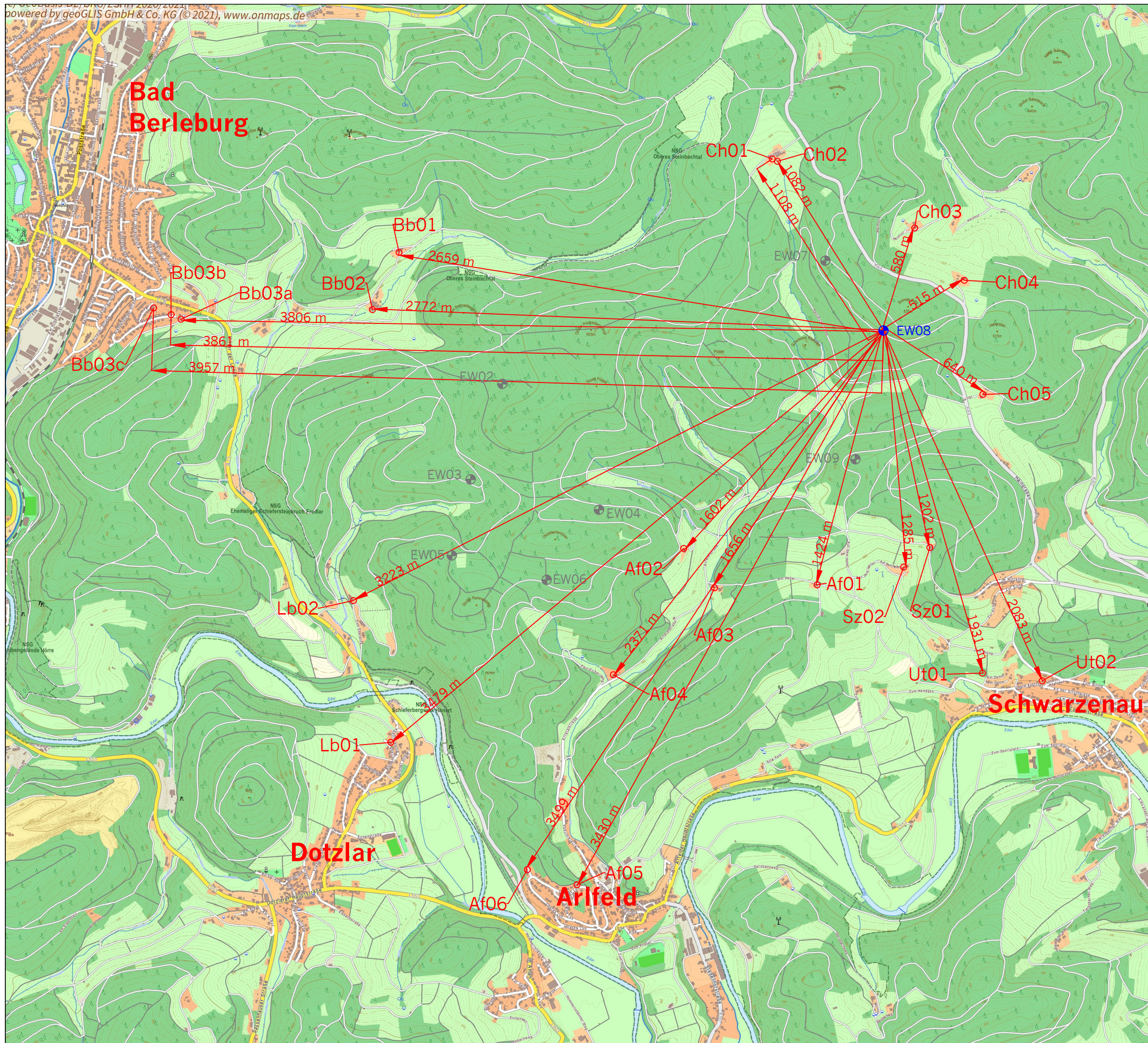
Planung
 Abstände Schattenimmissionsorte WEA EW07





Windkraftanlagenprojekt
Bad Berleburg
 WEA EW02 - EW09

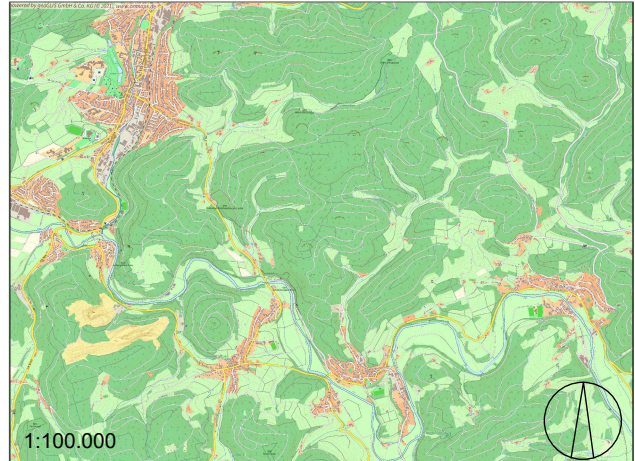
Bundesland: Nordrhein-Westfalen	Stadt: Bad Berleburg
Landkreis: Siegen-Wittgenstein	Gemarkung: div.
Maßstab 1:30.000	Bearbeiter: E. Lange
Blattgröße: DIN A3	Planungsstand: 06.07.2021

Windenergie Wenger-Rosenau GmbH & Co.KG
 Dorfstr. 53
 16816 Neuruppin
 Tel.: 03391/7758-0
 Fax: 03391/7758-11
 Mail: info@wenger-rosenau.com
 www.wenger-rosenau.com





- Legende:
-  geplante WEA
 -  weitere geplante WEA
 -  Immissionsort
 -  Abstand Immissionsort - geplante WEA in m



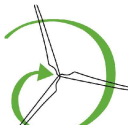
Planung
Abstände Schallimmissionsorte WEA EW08

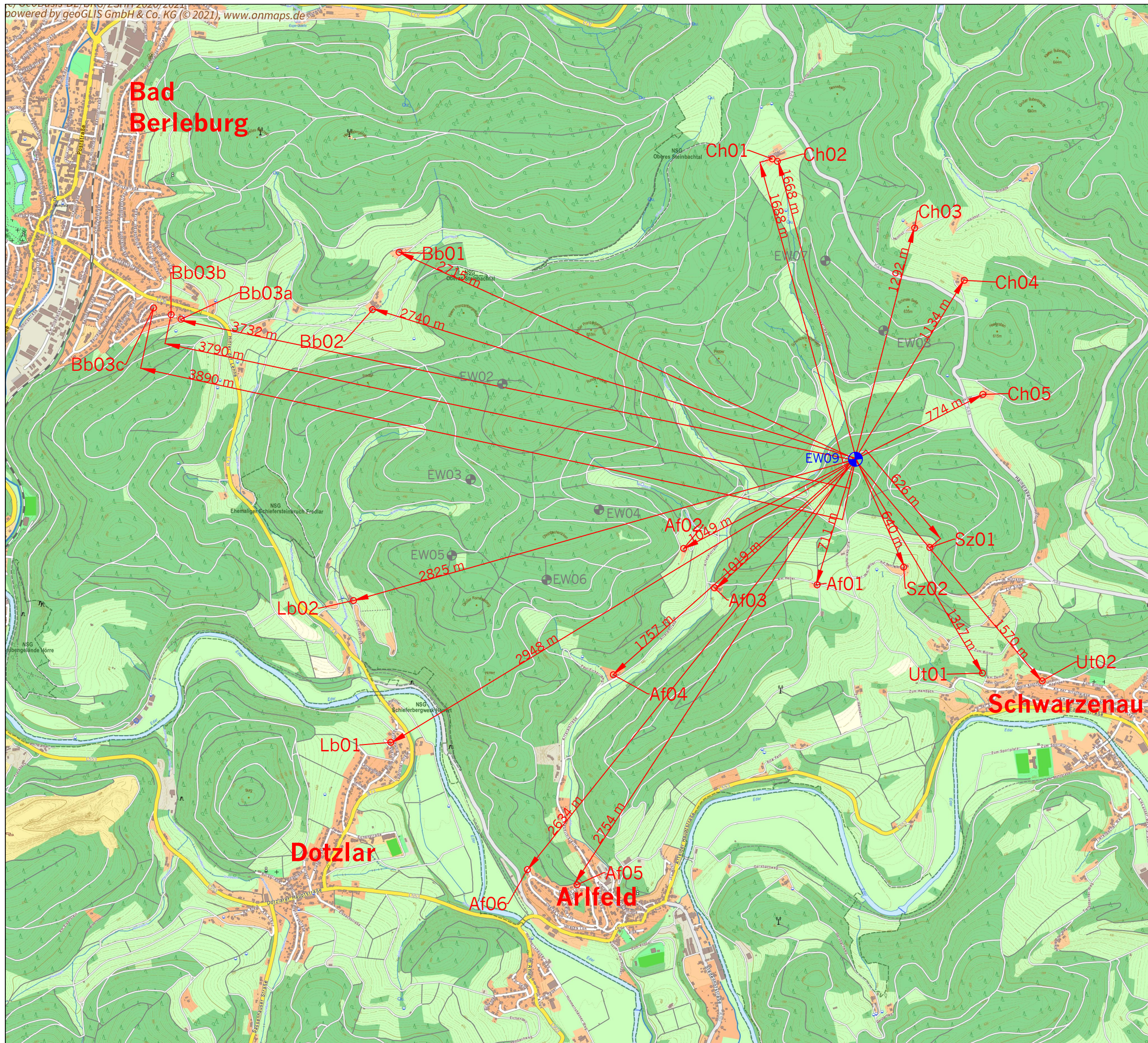
Windkraftanlagenprojekt
Bad Berleburg
WEA EW02 - EW09





Bundesland: Nordrhein-Westfalen	Stadt: Bad Berleburg
Landkreis: Siegen-Wittgenstein	Gemarkung: div.

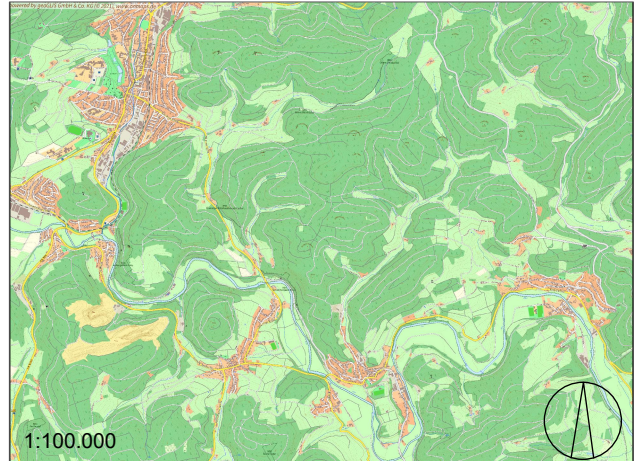
Maßstab 1:30.000	Bearbeiter: E. Lange
Blattgröße: DIN A3	Planungsstand: 06.07.2021

Windenergie Wenger-Rosenau GmbH & Co.KG
 Dorfstr. 53
 16816 Neuruppin
 Tel.: 03391/7758-0
 Fax: 03391/7758-11
 Mail: info@wenger-rosenau.com
 www.wenger-rosenau.com





- Legende:
-  geplante WEA
 -  weitere geplante WEA
 -  Immissionsort
 -  Abstand Immissionsort - geplante WEA in m



Planung
Abstände Schallimmissionsorte WEA EW09

Windkraftanlagenprojekt
Bad Berleburg
WEA EW02 - EW09

Bundesland: Nordrhein-Westfalen	Stadt: Bad Berleburg
Landkreis: Siegen-Wittgenstein	Gemarkung: div.

Maßstab 1:30.000	Bearbeiter: E. Lange
Blattgröße: DIN A3	Planungsstand: 06.07.2021

Windenergie Wenger-Rosenau GmbH & Co.KG
 Dorfstr. 53
 16816 Neuruppin
 Tel.: 03391/7758-0
 Fax: 03391/7758-11
 Mail: info@wenger-rosenau.com
 www.wenger-rosenau.com

