

# Gemarkung Heiligenrode

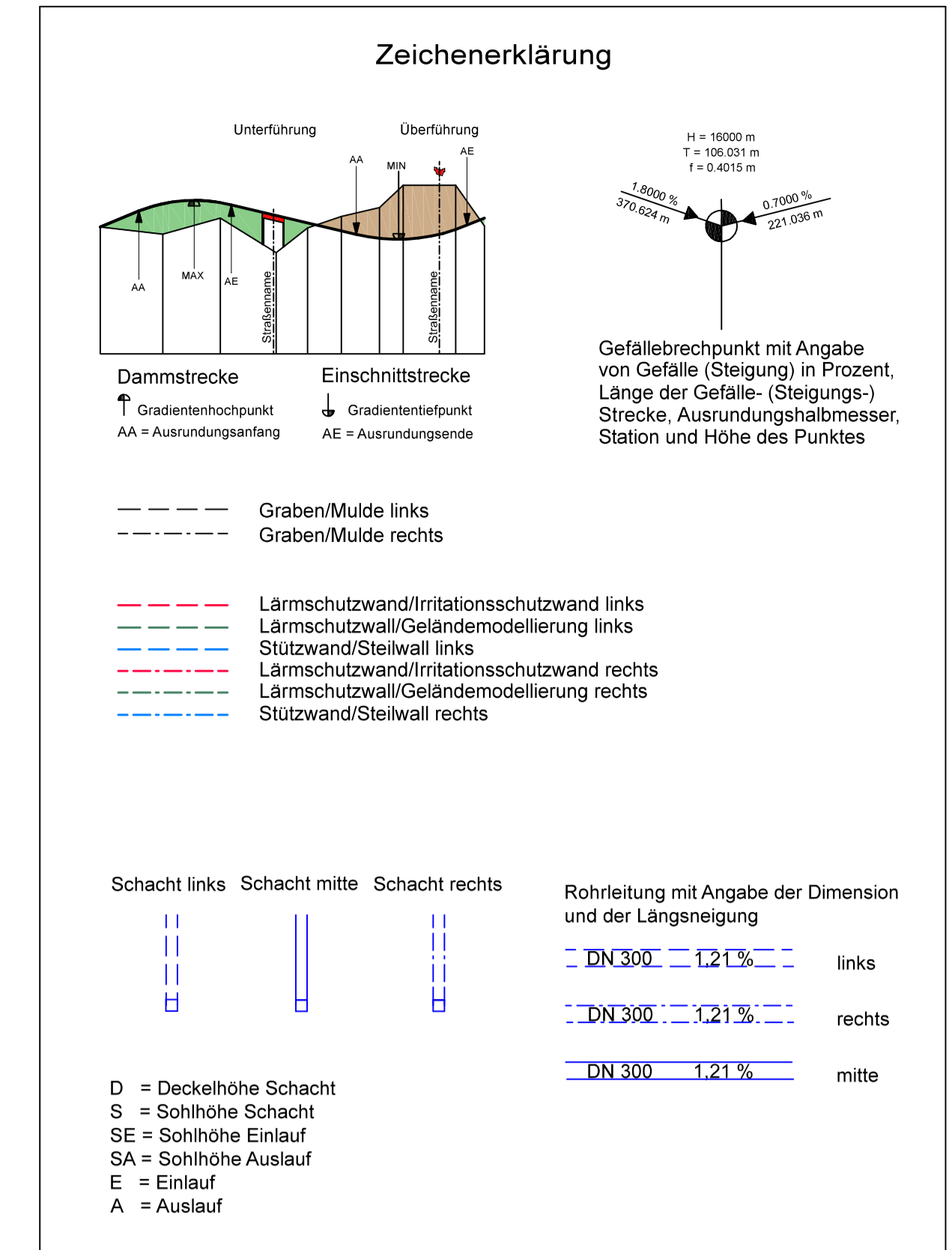
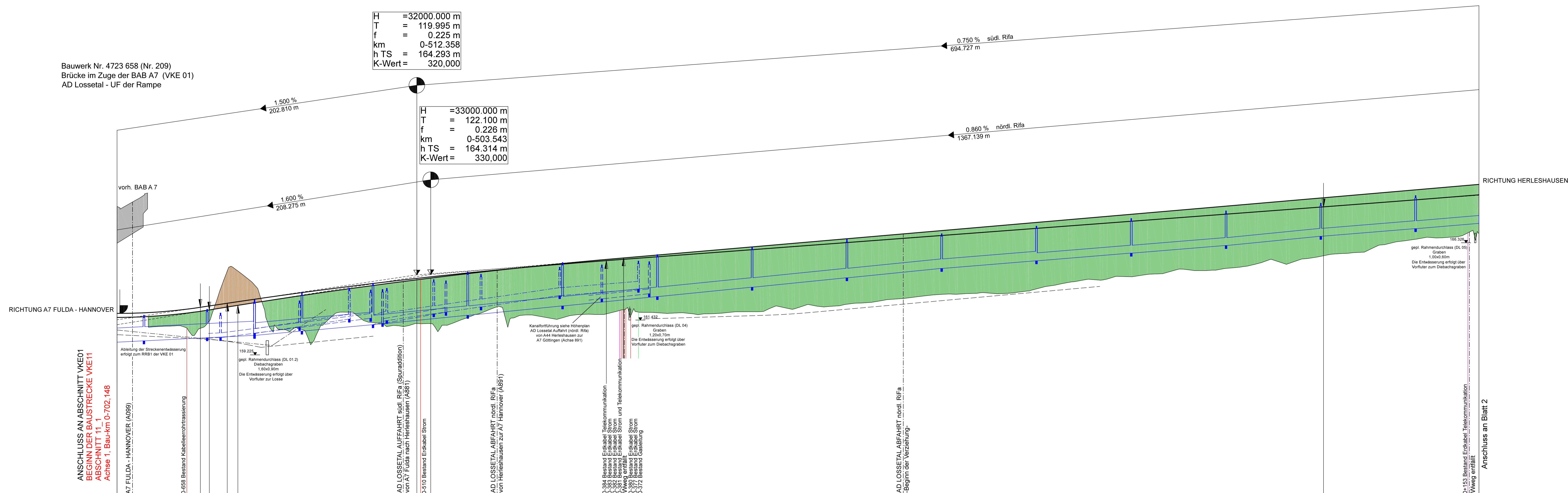
AD LOSSETAL

Entwässerungsabschnitt I

Bauwerk Nr. 4723 658 (Nr. 209)  
Brücke im Zuge der BAB A7 (VKE 01)  
AD Lossetal - UF der Rampe

H = 32000,000 m  
T = 119,995 m  
f = 0,225 m  
km = 0-512,358  
h TS = 164,293 m  
K-Wert = 320,000

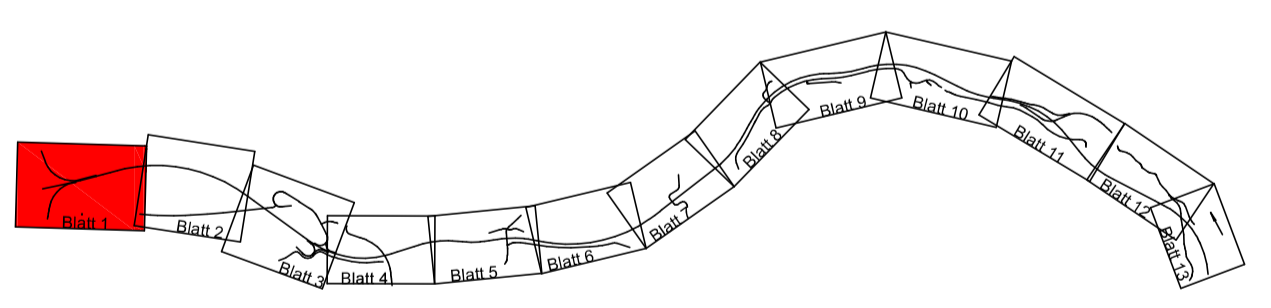
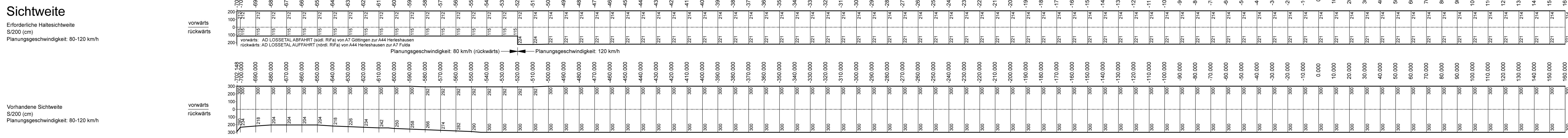
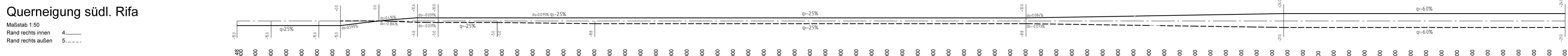
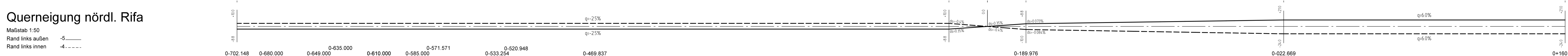
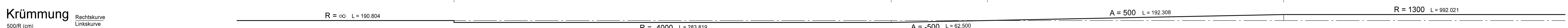
H = 33000,000 m  
T = 122,100 m  
f = 0,226 m  
km = 0-503,543  
h TS = 164,314 m  
K-Wert = 330,000



\* In den Höhenplan sind ausschließlich die Intensionsmaßnahmen, welche aus Widerständen hergeleitet werden, dargestellt. Informationen zu den Widerständen bzw. Kollektorschutzwänden, auch zu den in Kombination mit Lärmschutzwänden oder Intensionsmaßnahmen geplanten Zeilen, sind der Landschaftsplan des Bundesverkehrswegeplans (Übersicht 9.2.1) zu entnehmen.

**HINWEISE:**  
- Längsneigungen sind nicht zu Maßnahme geeignet  
- Einträge in der Tabelle sind nicht zu Maßnahme geeignet  
- Einträge in der Tabelle sind nicht zu Maßnahme geeignet  
- Einträge in der Tabelle sind nicht zu Maßnahme geeignet

Entwässerung links Leitung	50,000 m - DN 300 - 5,000 %	50,000 m - DN 300 - 5,000 %	50,000 m - DN 300 - 12,840 %	45,000 m - DN 300 - 12,840 %	14,600 m - DN 300 - 5,700 %	40,000 m - DN 300 - 17,500 %	60,000 m - DN 300 - 10,000 %	60,000 m - DN 300 - 9,903 %	60,000 m - DN 600 - 9,903 %	60,000 m - DN 600 - 9,903 %	60,000 m - DN 600 - 9,903 %	60,000 m - DN 600 - 9,903 %	60,000 m - DN 600 - 8,050 %	60,000 m - DN 500 - 8,050 %	60,000 m - DN 500 - 8,050 %	60,000 m - DN 500 - 8,050 %	60,000 m - DN 500 - 8,100 %	150,000 m - DN 500 - 8,100 %
Entwässerung links Deckeloberkante	50,000 m - DN 300 - 5,000 %	50,000 m - DN 300 - 5,000 %	50,000 m - DN 300 - 12,840 %	45,000 m - DN 300 - 12,840 %	14,600 m - DN 300 - 5,700 %	40,000 m - DN 300 - 17,500 %	60,000 m - DN 300 - 10,000 %	60,000 m - DN 300 - 9,903 %	60,000 m - DN 600 - 9,903 %	60,000 m - DN 600 - 9,903 %	60,000 m - DN 600 - 9,903 %	60,000 m - DN 600 - 9,903 %	60,000 m - DN 600 - 8,050 %	60,000 m - DN 500 - 8,050 %	60,000 m - DN 500 - 8,050 %	60,000 m - DN 500 - 8,050 %	60,000 m - DN 500 - 8,100 %	150,000 m - DN 500 - 8,100 %
Entwässerung links Sohle	50,000 m - DN 300 - 5,000 %	50,000 m - DN 300 - 5,000 %	50,000 m - DN 300 - 12,840 %	45,000 m - DN 300 - 12,840 %	14,600 m - DN 300 - 5,700 %	40,000 m - DN 300 - 17,500 %	60,000 m - DN 300 - 10,000 %	60,000 m - DN 300 - 9,903 %	60,000 m - DN 600 - 9,903 %	60,000 m - DN 600 - 9,903 %	60,000 m - DN 600 - 9,903 %	60,000 m - DN 600 - 9,903 %	60,000 m - DN 600 - 8,050 %	60,000 m - DN 500 - 8,050 %	60,000 m - DN 500 - 8,050 %	60,000 m - DN 500 - 8,050 %	60,000 m - DN 500 - 8,100 %	150,000 m - DN 500 - 8,100 %
Entwässerung Mitte Leitung	43,870 m - DN 300 - 4,959 %	40,000 m - DN 300 - 4,975 %	50,000 m - DN 300 - 4,967 %	50,000 m - DN 300 - 4,967 %	45,000 m - DN 800 - 9,000 %	60,000 m - DN 600 - 9,903 %	60,000 m - DN 600 - 9,903 %	60,000 m - DN 600 - 9,903 %	60,000 m - DN 600 - 9,903 %	60,000 m - DN 600 - 9,903 %	60,000 m - DN 600 - 9,903 %	60,000 m - DN 600 - 9,903 %	60,000 m - DN 600 - 8,050 %	60,000 m - DN 500 - 8,050 %	60,000 m - DN 500 - 8,050 %	60,000 m - DN 500 - 8,100 %	150,000 m - DN 500 - 8,100 %	
Entwässerung Mitte Deckeloberkante	43,870 m - DN 300 - 4,959 %	40,000 m - DN 300 - 4,975 %	50,000 m - DN 300 - 4,967 %	50,000 m - DN 300 - 4,967 %	45,000 m - DN 800 - 9,000 %	60,000 m - DN 600 - 9,903 %	60,000 m - DN 600 - 9,903 %	60,000 m - DN 600 - 9,903 %	60,000 m - DN 600 - 9,903 %	60,000 m - DN 600 - 9,903 %	60,000 m - DN 600 - 9,903 %	60,000 m - DN 600 - 9,903 %	60,000 m - DN 600 - 8,050 %	60,000 m - DN 500 - 8,050 %	60,000 m - DN 500 - 8,050 %	60,000 m - DN 500 - 8,100 %	150,000 m - DN 500 - 8,100 %	
Entwässerung Mitte Sohle	43,870 m - DN 300 - 4,959 %	40,000 m - DN 300 - 4,975 %	50,000 m - DN 300 - 4,967 %	50,000 m - DN 300 - 4,967 %	45,000 m - DN 800 - 9,000 %	60,000 m - DN 600 - 9,903 %	60,000 m - DN 600 - 9,903 %	60,000 m - DN 600 - 9,903 %	60,000 m - DN 600 - 9,903 %	60,000 m - DN 600 - 9,903 %	60,000 m - DN 600 - 9,903 %	60,000 m - DN 600 - 9,903 %	60,000 m - DN 600 - 8,050 %	60,000 m - DN 500 - 8,050 %	60,000 m - DN 500 - 8,050 %	60,000 m - DN 500 - 8,100 %	150,000 m - DN 500 - 8,100 %	
Entwässerung rechts Leitung	8,500 m - DN 300 - 15,000 %	60,000 m - DN 300 - 15,000 %	15,000 m - DN 300 - 15,000 %	15,000 m - DN 300 - 15,000 %	50,000 m - DN 500 - 14,327 %	50,000 m - DN 500 - 8,000 %	50,000 m - DN 500 - 8,000 %	50,000 m - DN 500 - 8,000 %	50,000 m - DN 500 - 8,000 %	50,000 m - DN 500 - 8,000 %	50,000 m - DN 500 - 8,000 %	50,000 m - DN 500 - 8,000 %	50,000 m - DN 500 - 8,000 %	50,000 m - DN 500 - 8,000 %	50,000 m - DN 500 - 8,000 %	50,000 m - DN 500 - 8,000 %	50,000 m - DN 500 - 8,000 %	50,000 m - DN 500 - 8,000 %
Entwässerung rechts Deckeloberkante	8,500 m - DN 300 - 15,000 %	60,000 m - DN 300 - 15,000 %	15,000 m - DN 300 - 15,000 %	15,000 m - DN 300 - 15,000 %	50,000 m - DN 500 - 14,327 %	50,000 m - DN 500 - 8,000 %	50,000 m - DN 500 - 8,000 %	50,000 m - DN 500 - 8,000 %	50,000 m - DN 500 - 8,000 %	50,000 m - DN 500 - 8,000 %	50,000 m - DN 500 - 8,000 %	50,000 m - DN 500 - 8,000 %	50,000 m - DN 500 - 8,000 %	50,000 m - DN 500 - 8,000 %	50,000 m - DN 500 - 8,000 %	50,000 m - DN 500 - 8,000 %	50,000 m - DN 500 - 8,000 %	50,000 m - DN 500 - 8,000 %
Entwässerung rechts Sohle	8,500 m - DN 300 - 15,000 %	60,000 m - DN 300 - 15,000 %	15,000 m - DN 300 - 15,000 %	15,000 m - DN 300 - 15,000 %	50,000 m - DN 500 - 14,327 %	50,000 m - DN 500 - 8,000 %	50,000 m - DN 500 - 8,000 %	50,000 m - DN 500 - 8,000 %	50,000 m - DN 500 - 8,000 %	50,000 m - DN 500 - 8,000 %	50,000 m - DN 500 - 8,000 %	50,000 m - DN 500 - 8,000 %	50,000 m - DN 500 - 8,000 %	50,000 m - DN 500 - 8,000 %	50,000 m - DN 500 - 8,000 %	50,000 m - DN 500 - 8,000 %	50,000 m - DN 500 - 8,000 %	50,000 m - DN 500 - 8,000 %
Höhe Gradiente nördl. Rifa	161,850	161,850	161,850	161,850	161,850	161,850	161,850	161,850	161,850	161,850	161,850	161,850	161,850	161,850	161,850	161,850	161,850	161,850
Höhe Gradiente südl. Rifa	161,850	161,850	161,850	161,850	161,850	161,850	161,850	161,850	161,850	161,850	161,850	161,850	161,850	161,850	161,850	161,850	161,850	161,850
Geländehöhe	161,850	161,850	161,850	161,850	161,850	161,850	161,850	161,850	161,850	161,850	161,850	161,850	161,850	161,850	161,850	161,850	161,850	161,850
Station	0-700	0-600	0-500	0-400	0-300	0-200	0-100	0+000	0+100									



Nr.	Art der Änderung	Datum	Zeichen

## FESTSTELLUNGSENTWURF

**VERKEHRSPROJEKT DEUTSCHE EINHEIT NR. 15**  
Neubau der BAB A4 Kassel - Herleshausen  
AD LOSSETAL - AS HEILIGENRODE

**Höhenplan**  
44  
- Aches 1 -  
- Aches 2 -  
- Aches 3 -  
- Aches 4 -  
- Aches 5 -  
- Aches 6 -  
- Aches 7 -  
- Aches 8 -  
- Aches 9 -  
- Aches 10 -  
- Aches 11 -  
- Aches 12 -  
- Aches 13 -  
- Aches 14 -  
- Aches 15 -  
- Aches 16 -  
- Aches 17 -  
- Aches 18 -  
- Aches 19 -  
- Aches 20 -  
- Aches 21 -  
- Aches 22 -  
- Aches 23 -  
- Aches 24 -  
- Aches 25 -  
- Aches 26 -  
- Aches 27 -  
- Aches 28 -  
- Aches 29 -  
- Aches 30 -  
- Aches 31 -  
- Aches 32 -  
- Aches 33 -  
- Aches 34 -  
- Aches 35 -  
- Aches 36 -  
- Aches 37 -  
- Aches 38 -  
- Aches 39 -  
- Aches 40 -  
- Aches 41 -  
- Aches 42 -  
- Aches 43 -  
- Aches 44 -  
- Aches 45 -  
- Aches 46 -  
- Aches 47 -  
- Aches 48 -  
- Aches 49 -  
- Aches 50 -  
- Aches 51 -  
- Aches 52 -  
- Aches 53 -  
- Aches 54 -  
- Aches 55 -  
- Aches 56 -  
- Aches 57 -  
- Aches 58 -  
- Aches 59 -  
- Aches 60 -  
- Aches 61 -  
- Aches 62 -  
- Aches 63 -  
- Aches 64 -  
- Aches 65 -  
- Aches 66 -  
- Aches 67 -  
- Aches 68 -  
- Aches 69 -  
- Aches 70 -  
- Aches 71 -  
- Aches 72 -  
- Aches 73 -  
- Aches 74 -  
- Aches 75 -  
- Aches 76 -  
- Aches 77 -  
- Aches 78 -  
- Aches 79 -  
- Aches 80 -  
- Aches 81 -  
- Aches 82 -  
- Aches 83 -  
- Aches 84 -  
- Aches 85 -  
- Aches 86 -  
- Aches 87 -  
- Aches 88 -  
- Aches 89 -  
- Aches 90 -  
- Aches 91 -  
- Aches 92 -  
- Aches 93 -  
- Aches 94 -  
- Aches 95 -  
- Aches 96 -  
- Aches 97 -  
- Aches 98 -  
- Aches 99 -  
- Aches 100 -  
- Aches 101 -  
- Aches 102 -  
- Aches 103 -  
- Aches 104 -  
- Aches 105 -  
- Aches 106 -  
- Aches 107 -  
- Aches 108 -  
- Aches 109 -  
- Aches 110 -  
- Aches 111 -  
- Aches 112 -  
- Aches 113 -  
- Aches 114 -  
- Aches 115 -  
- Aches 116 -  
- Aches 117 -  
- Aches 118 -  
- Aches 119 -  
- Aches 120 -  
- Aches 121 -  
- Aches 122 -  
- Aches 123 -  
- Aches 124 -  
- Aches 125 -  
- Aches 126 -  
- Aches 127 -  
- Aches 128 -  
- Aches 129 -  
- Aches 130 -  
- Aches 131 -  
- Aches 132 -  
- Aches 133 -  
- Aches 134 -  
- Aches 135 -  
- Aches 136 -  
- Aches 137 -  
- Aches 138 -  
- Aches 139 -  
- Aches 140 -  
- Aches 141 -  
- Aches 142 -  
- Aches 143 -  
- Aches 144 -  
- Aches 145 -  
- Aches 146 -  
- Aches 147 -  
- Aches 148 -  
- Aches 149 -  
- Aches 150 -  
- Aches 151 -  
- Aches 152 -  
- Aches 153 -  
- Aches 154 -  
- Aches 155 -  
- Aches 156 -  
- Aches 157 -  
- Aches 158 -  
- Aches 159 -  
- Aches 160 -  
- Aches 161 -  
- Aches 162 -  
- Aches 163 -  
- Aches 164 -  
- Aches 165 -  
- Aches 166 -  
- Aches 167 -  
- Aches 168 -  
- Aches 169 -  
- Aches 170 -  
- Aches 171 -  
- Aches 172 -  
- Aches 173 -  
- Aches 174 -  
- Aches 175 -  
- Aches 176 -  
- Aches 177 -  
- Aches 178 -  
- Aches 179 -  
- Aches 180 -  
- Aches 181 -  
- Aches 182 -  
- Aches 183 -  
- Aches 184 -  
- Aches 185 -  
- Aches 186 -  
- Aches 187 -  
- Aches 188 -  
- Aches 189 -  
- Aches 190 -  
- Aches 191 -  
- Aches 192 -  
- Aches 193 -  
- Aches 194 -  
- Aches 195 -  
- Aches 196 -  
- Aches 197 -  
- Aches 198 -  
- Aches 199 -  
- Aches 200 -  
- Aches 201 -  
- Aches 202 -  
- Aches 203 -  
- Aches 204 -  
- Aches 205 -  
- Aches 206 -  
- Aches 207 -  
- Aches 208 -  
- Aches 209 -  
- Aches 210 -  
- Aches 211 -  
- Aches 212 -  
- Aches 213 -  
- Aches 214 -  
- Aches 215 -  
- Aches 216 -  
- Aches 217 -  
- Aches 218 -  
- Aches 219 -  
- Aches 220 -  
- Aches 221 -  
- Aches 222 -  
- Aches 223 -  
- Aches 224 -  
- Aches 225 -  
- Aches 226 -  
- Aches 227 -  
- Aches 228 -  
- Aches 229 -  
- Aches 230 -  
- Aches 231 -  
- Aches 232 -  
- Aches 233 -  
- Aches 234 -  
- Aches 235 -  
- Aches 236 -  
- Aches 237 -  
- Aches 238 -  
- Aches 239 -  
- Aches 240 -  
- Aches 241 -  
- Aches 242 -  
- Aches 243 -  
- Aches 244 -  
- Aches 245 -  
- Aches 246 -  
- Aches 247 -  
- Aches 248 -  
- Aches 249 -  
- Aches 250 -  
- Aches 251 -  
- Aches 252 -  
- Aches 253 -  
- Aches 254 -  
- Aches 255 -  
- Aches 256 -  
- Aches 257 -  
- Aches 258 -  
- Aches 259 -  
- Aches 260 -  
- Aches 261 -  
- Aches 262 -  
- Aches 263 -  
- Aches 264 -  
- Aches 265 -  
- Aches 266 -  
- Aches 267 -  
- Aches 268 -  
- Aches 269 -  
- Aches 270 -  
- Aches 271 -  
- Aches 272 -  
- Aches 273 -  
- Aches 274 -  
- Aches 275 -  
- Aches 276 -  
- Aches 277 -  
- Aches 278 -  
- Aches 279 -  
- Aches 280 -  
- Aches 281 -  
- Aches 282 -  
- Aches 283 -  
- Aches 284 -  
- Aches 285 -  
- Aches 286 -  
- Aches 287 -  
- Aches 288 -  
- Aches 289 -  
- Aches 290 -  
- Aches 291 -  
- Aches 292 -  
- Aches 293 -  
- Aches 294 -  
- Aches 295 -  
- Aches 296 -  
- Aches 297 -  
- Aches 298 -  
- Aches 299 -  
- Aches 300 -

gepl. I. A. Ralf Stuf  
(Dezernent)