

BK 3b-West

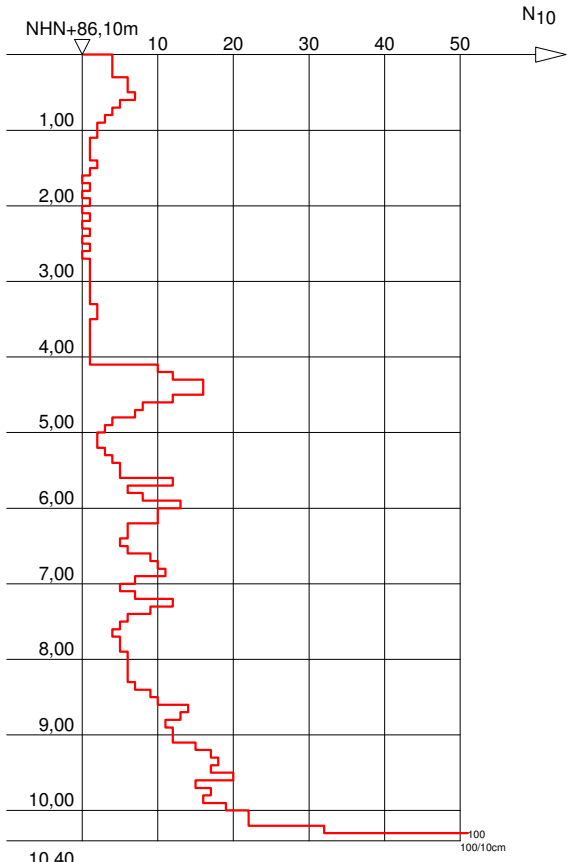
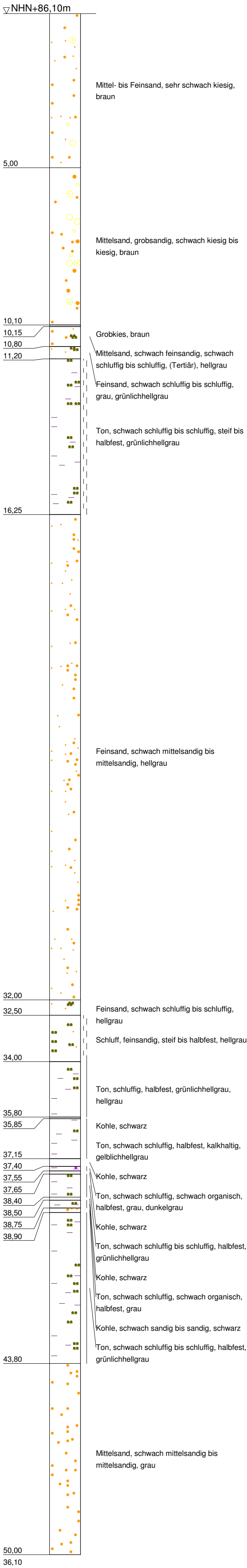
DPH 3b-West

BK 3b-Ost

DPH 3b-Ost

2.90 GW  
30.06.16

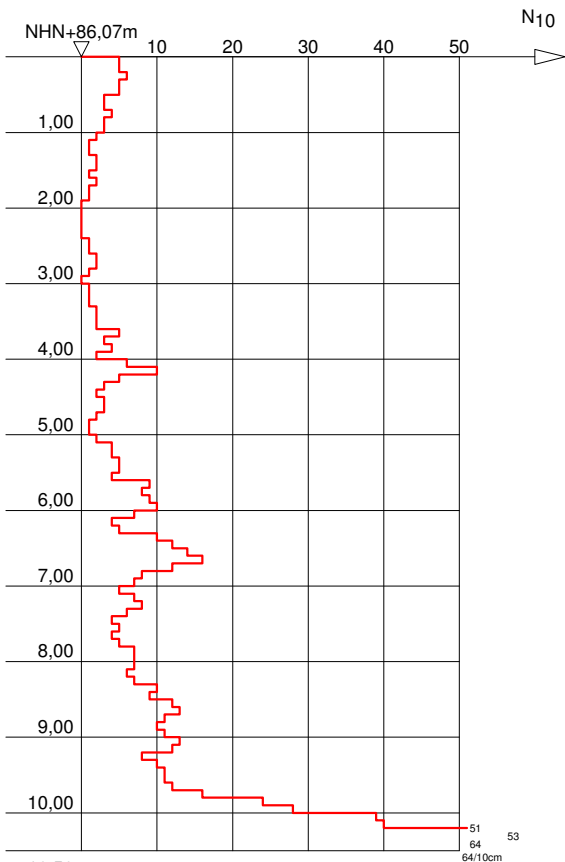
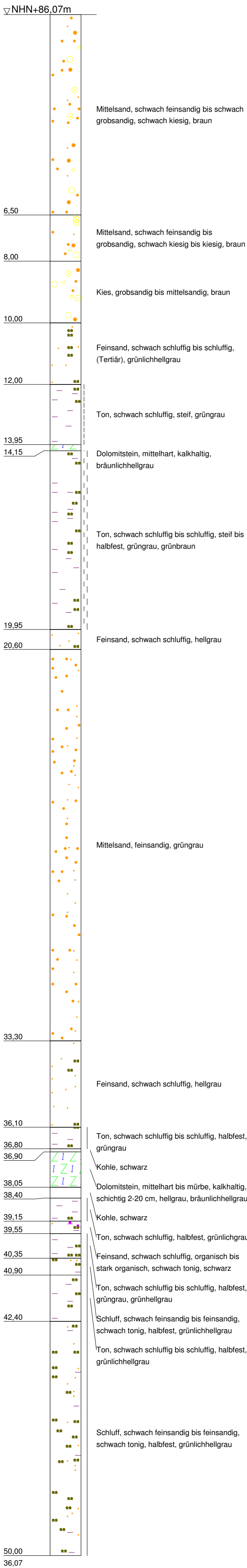
2.85 GW  
29.06.16



11.00 BDP  
41

15.00 BDP  
67

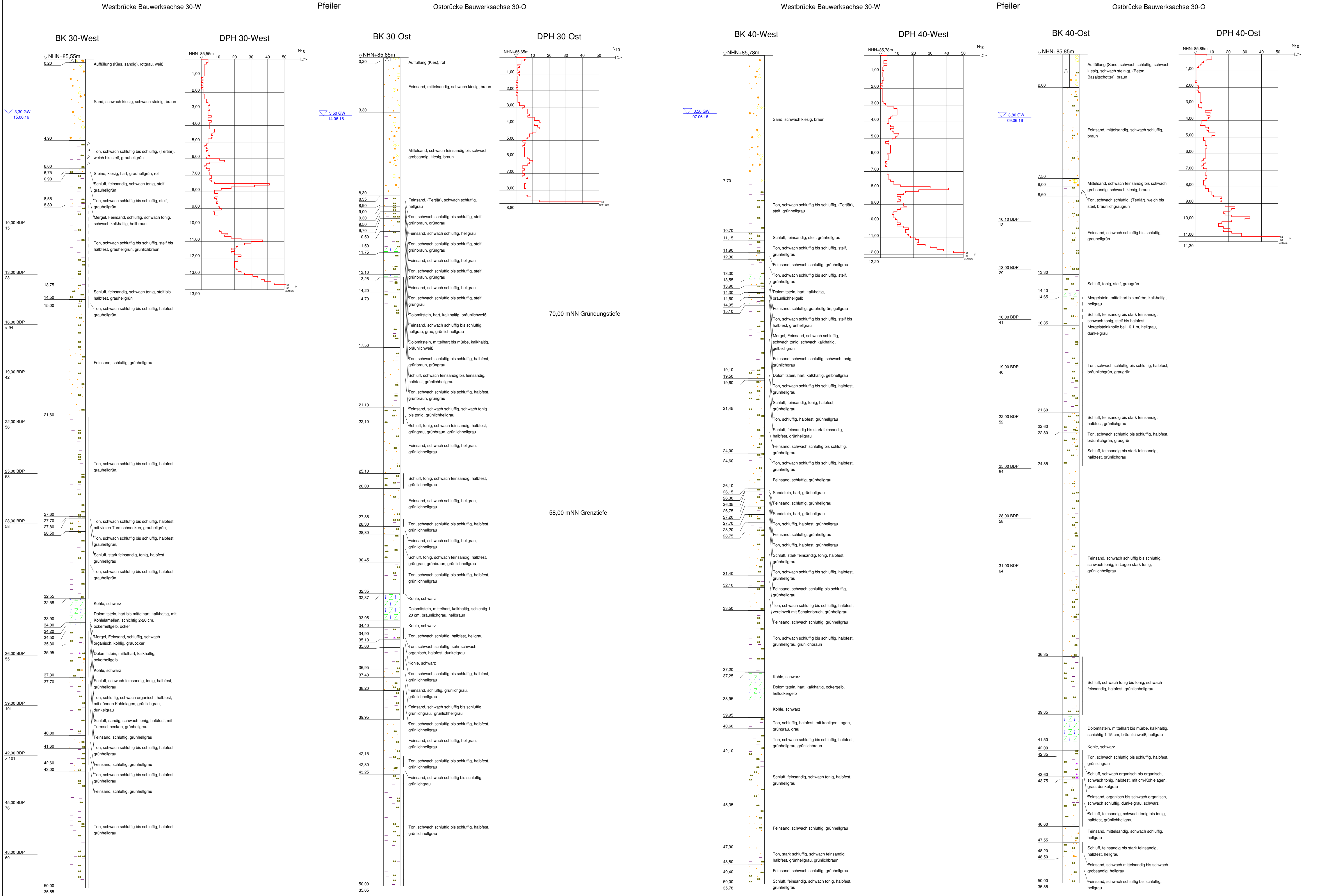
18.00 BDP  
75



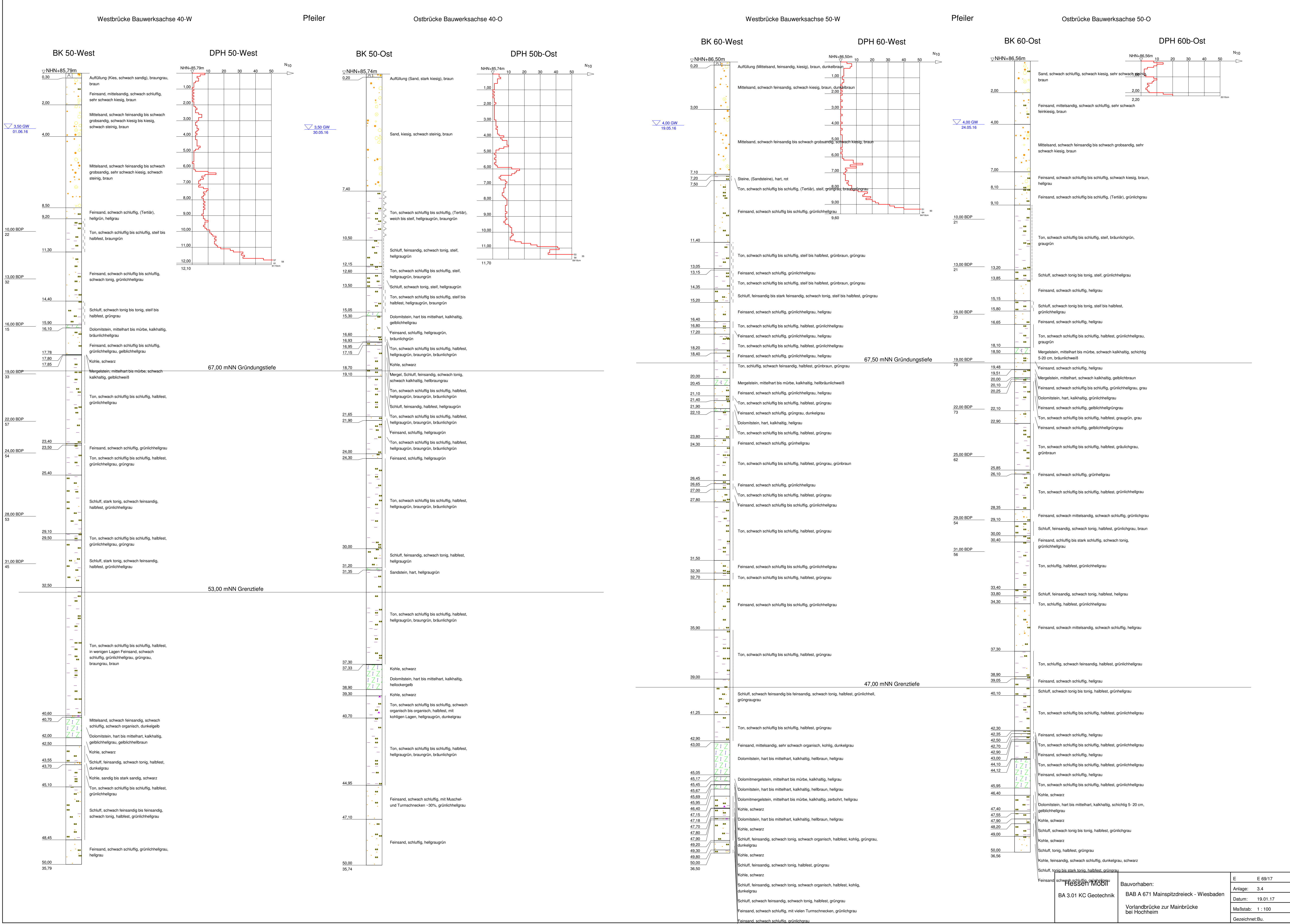
Hessen Mobil BA 3.01 KC Geotechnik	Bauvorhaben: BAB A 671 Mainspitzdreieck - Wiesbaden  Vorlandbrücke zur Mainbrücke bei Hochheim	E	E 69/17
		Anlage:	3.1
		Datum:	19.01.17
		Maßstab:	1 : 100
		Gezeichnet:	Bu.













## Westbrücke Bauwerksachse 60-W

## Pfeiler

## Ostbrücke Bauwerksachse 60-O

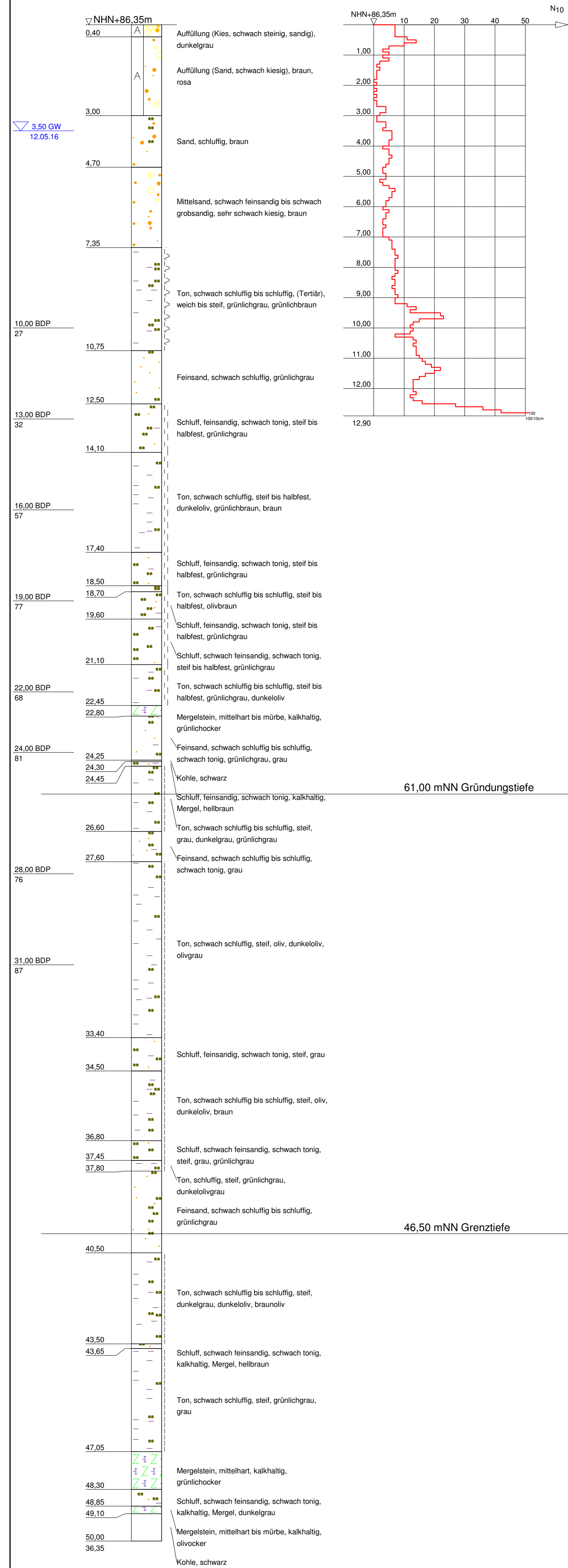
## Westbrücke Bauwerksachse 70-W

## Pfeiler

## Ostbrücke Bauwerksachse 70-O

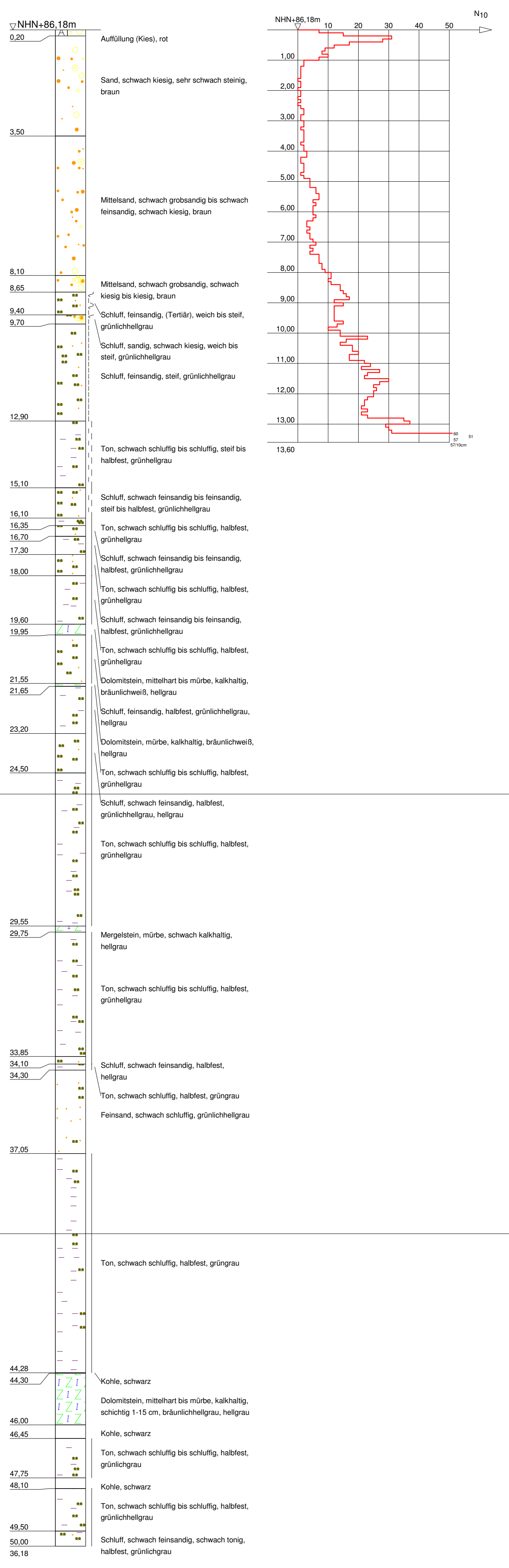
## BK 70-West

## DPH 70-West



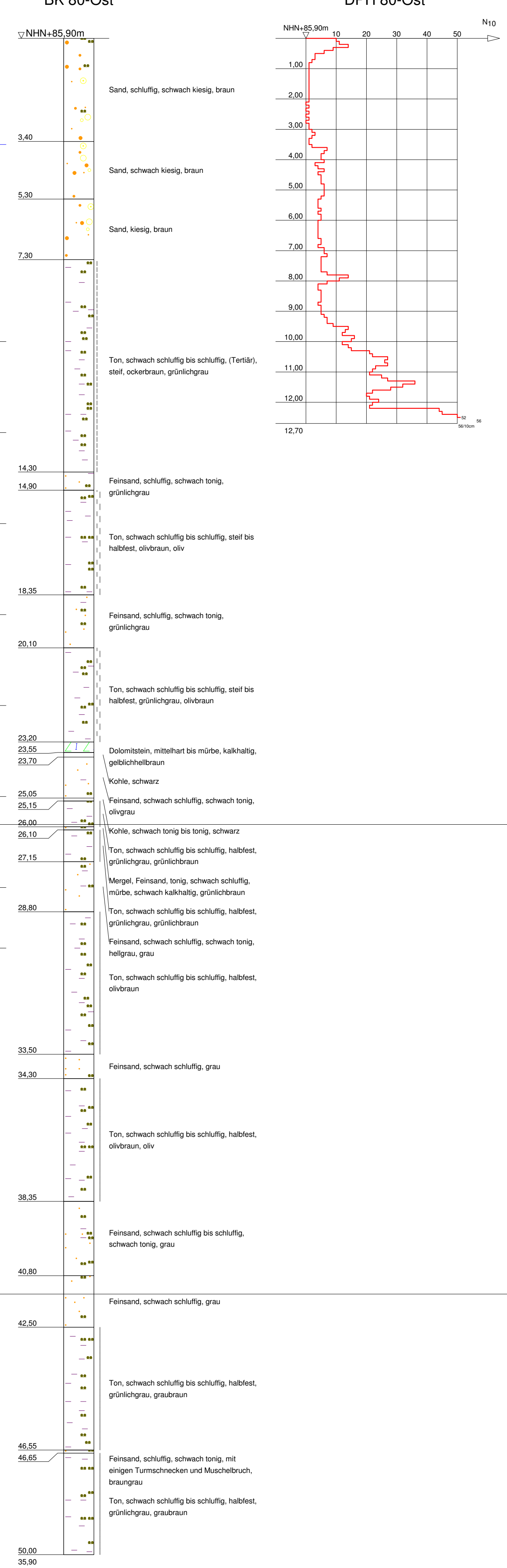
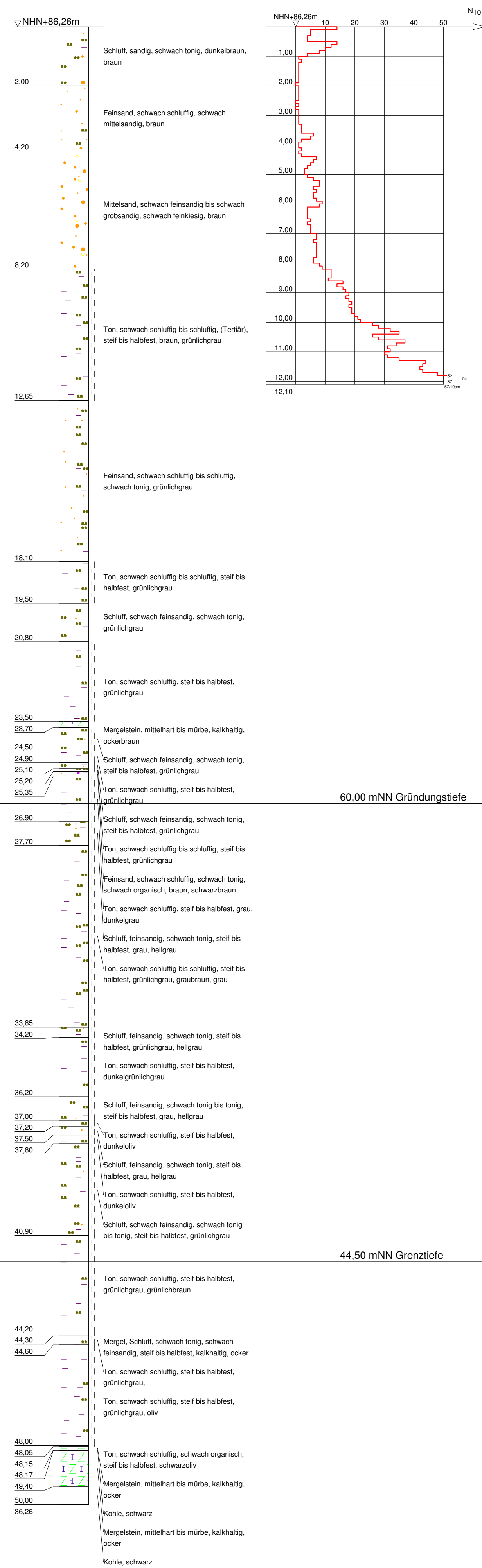
## BK 70-Ost

## DPH 70-Ost



## BK 80-West

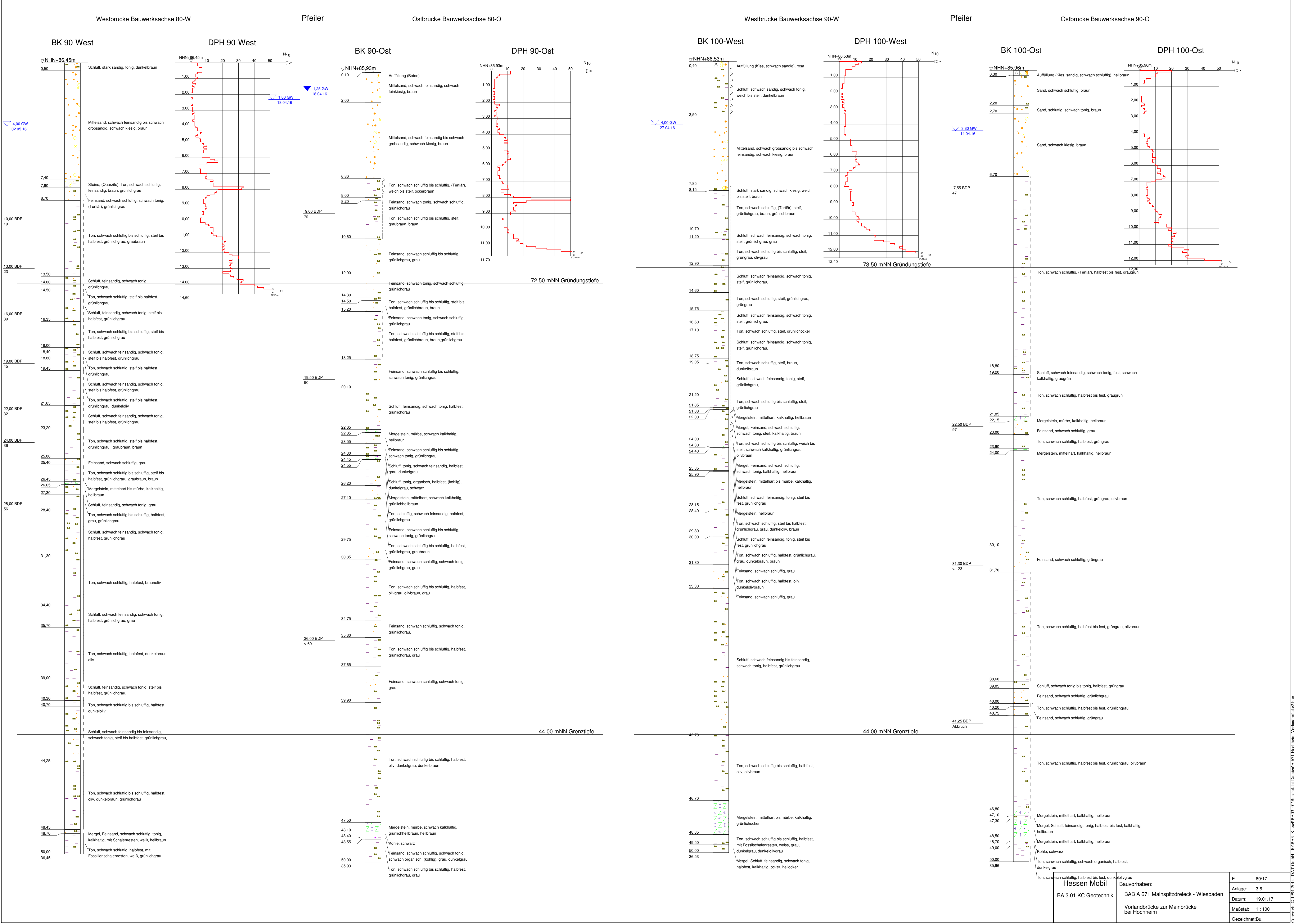
## DPH 80-West



Hessen Mobil  
BA 3.01 KC Geotech

Bauvorhaben:  
BAB A 671 Mainspitzdreieck - Wiesbaden  
Vorlandbrücke zur Mainbrücke  
bei Hochheim

E	E 69/17
Anlage:	3.5
Datum:	19.01.1
Maßstab:	1 : 100
Gezeichnet: Bu.	



Hessen Mobil

BA 3.01 KC Geotechnik

Bauvorhaben:

BAB A 671 Mainspitzdreieck - Wiesbaden

Vorlandbrücke zur Mainbrücke bei Hochheim

E

69/17

Anlage:

3.6

Datum:

19.01.17

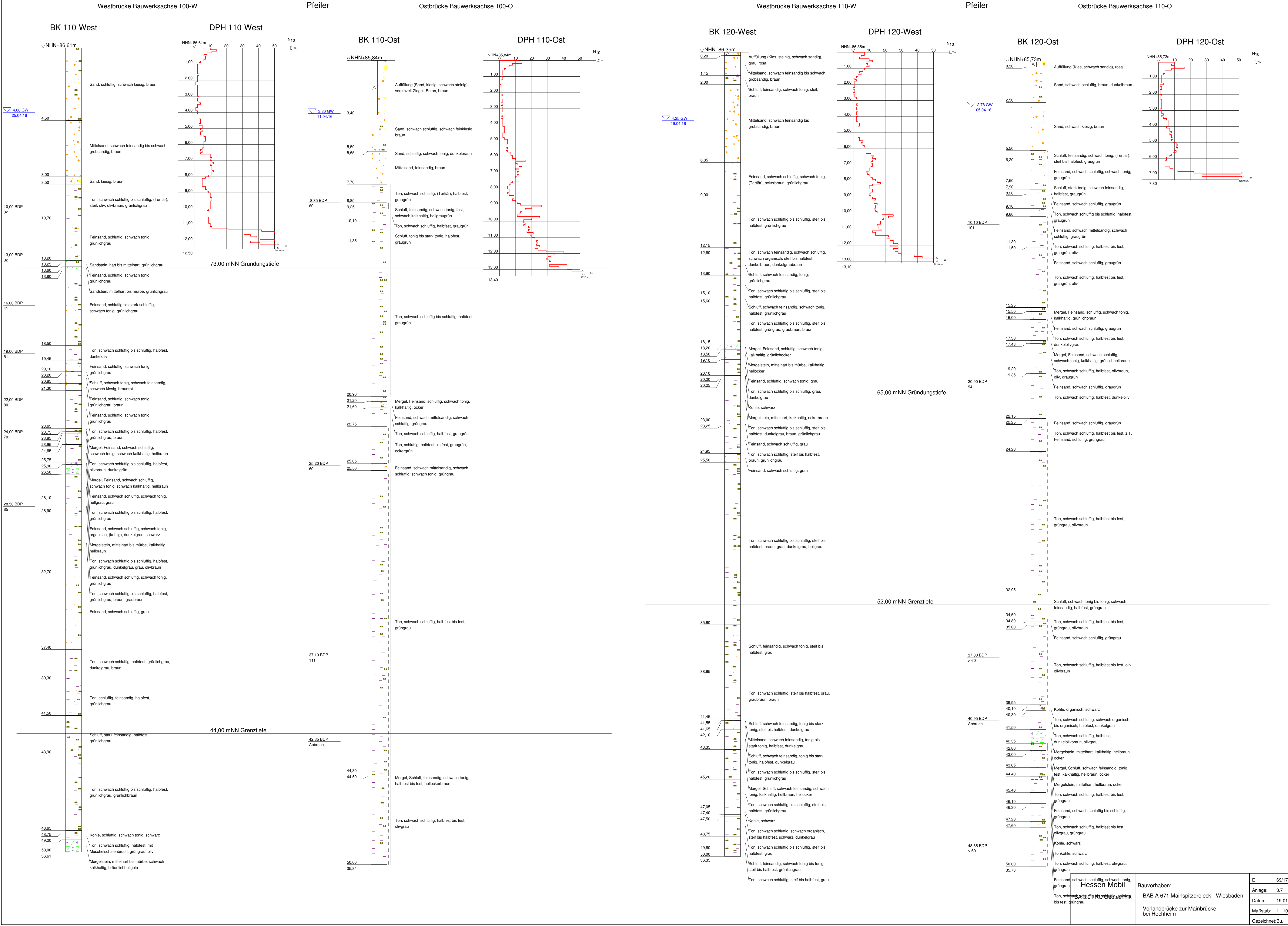
Maßstab:

1 : 100

Gezeichnet:

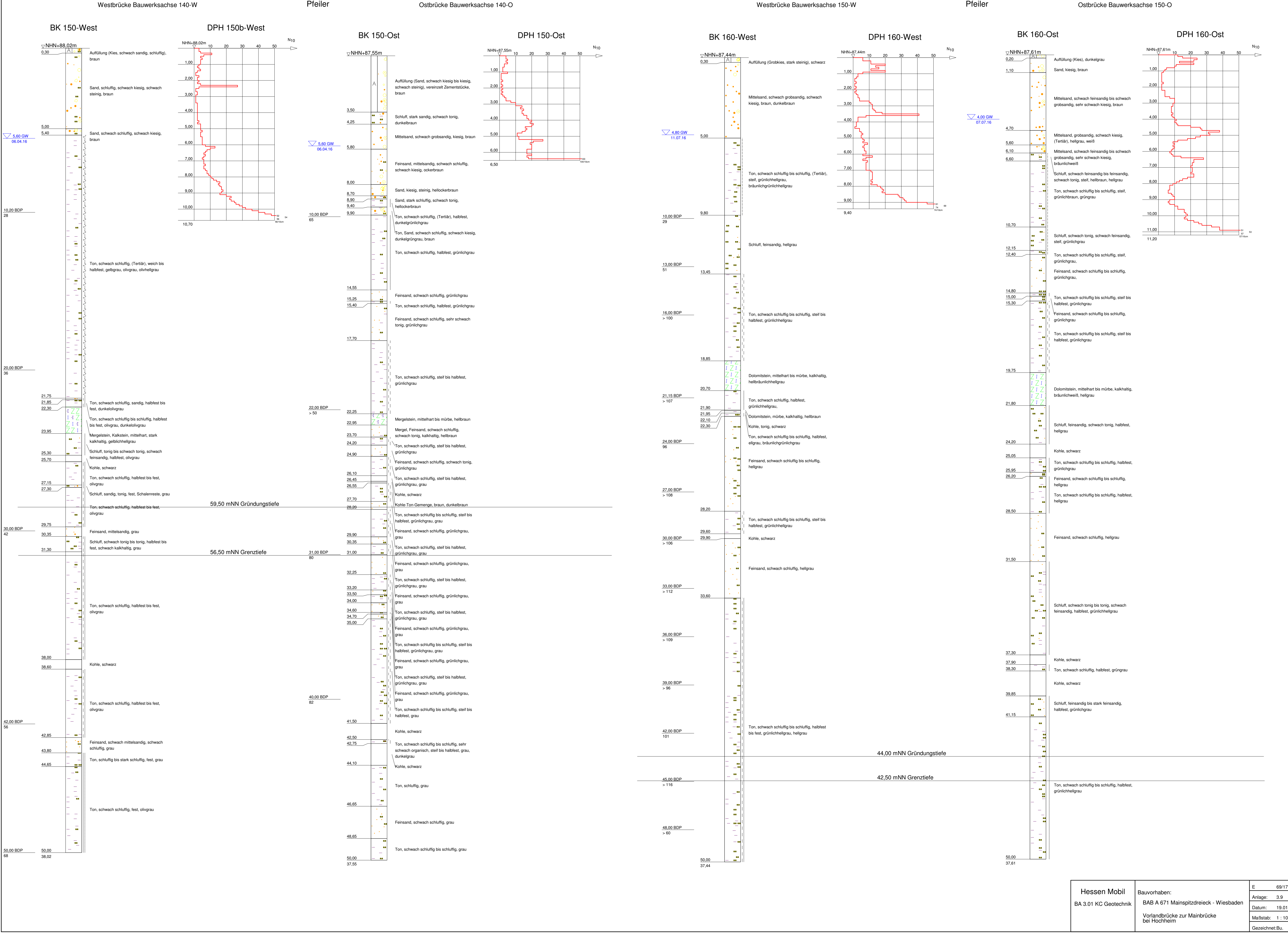
Bu.

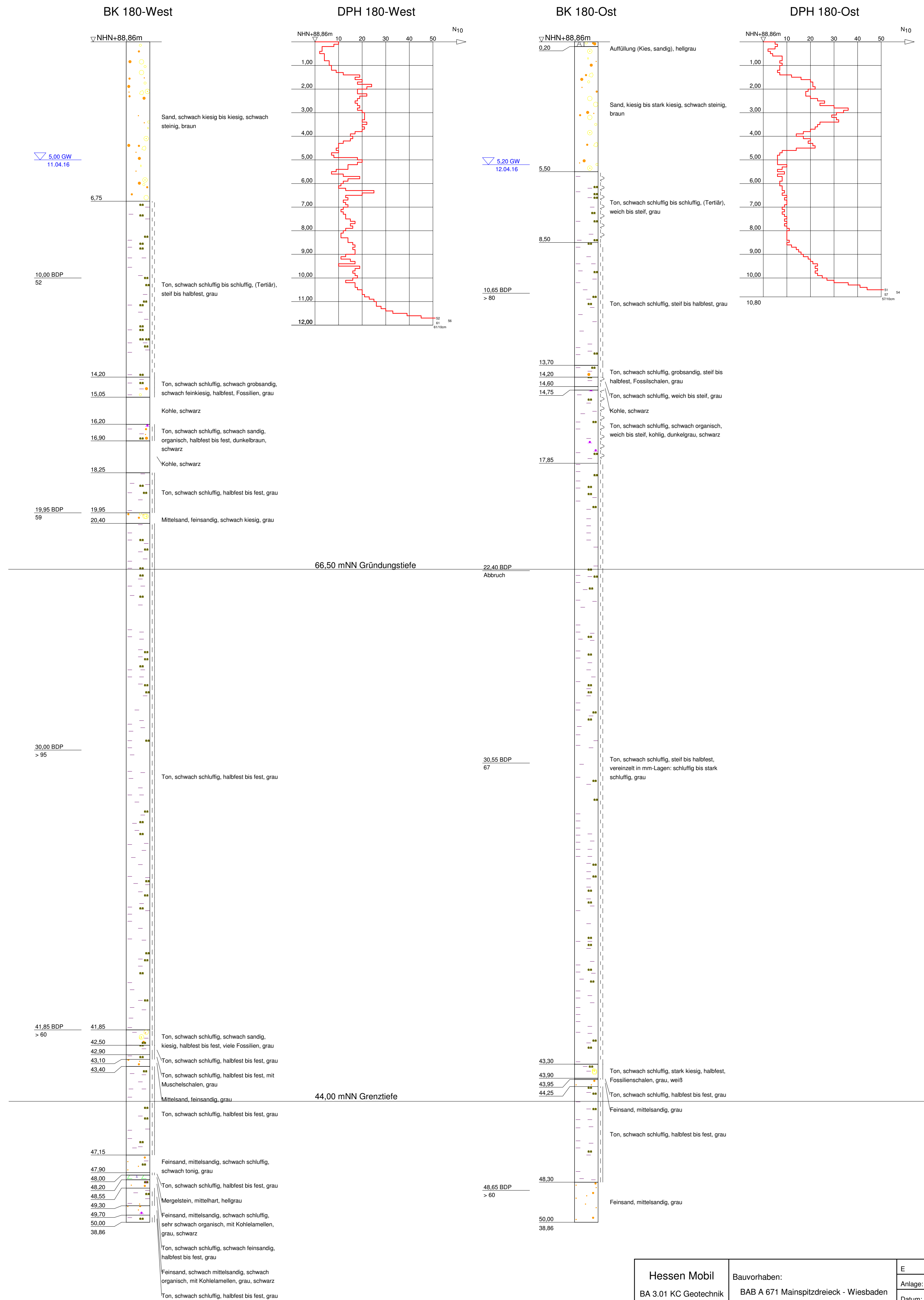
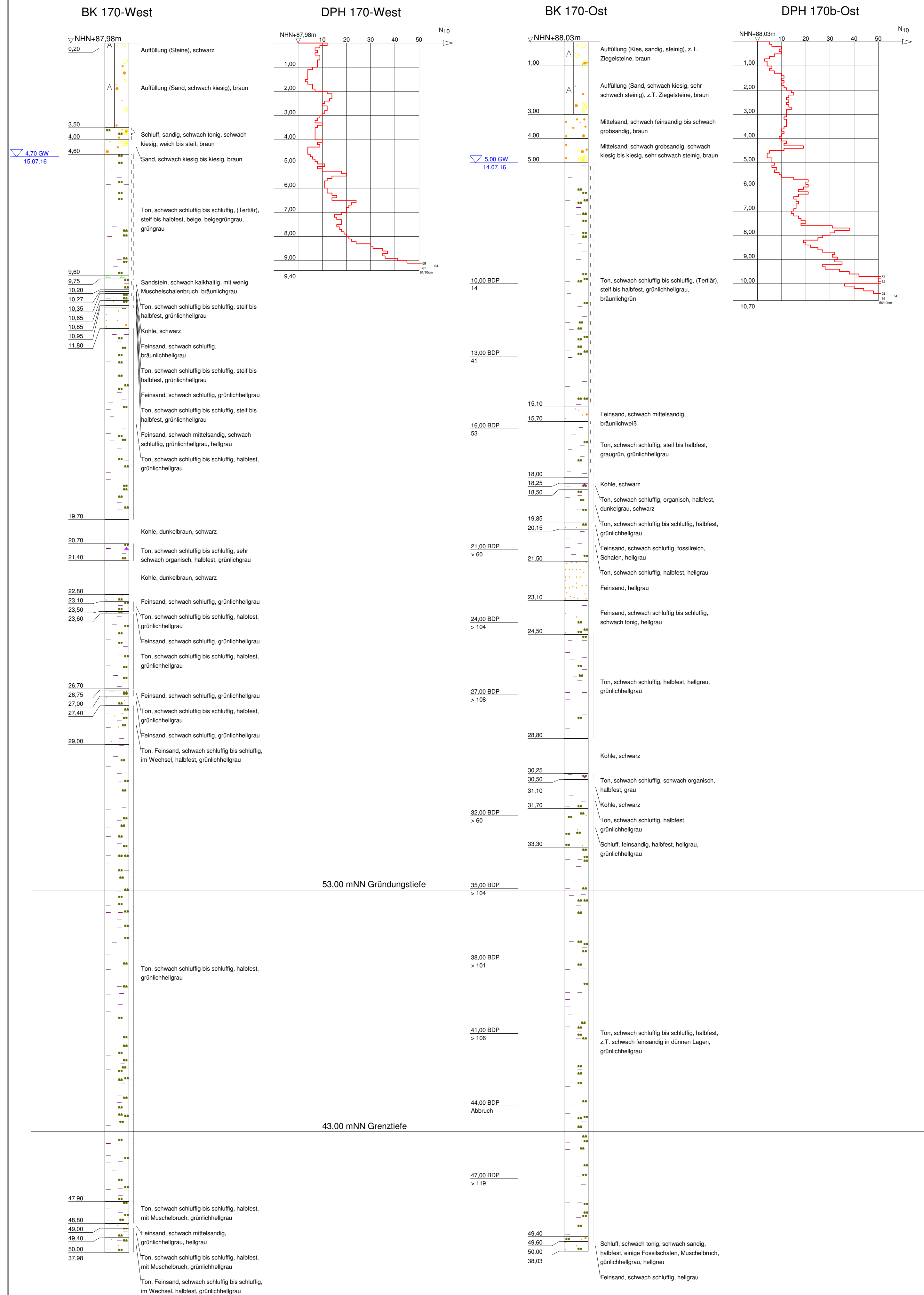




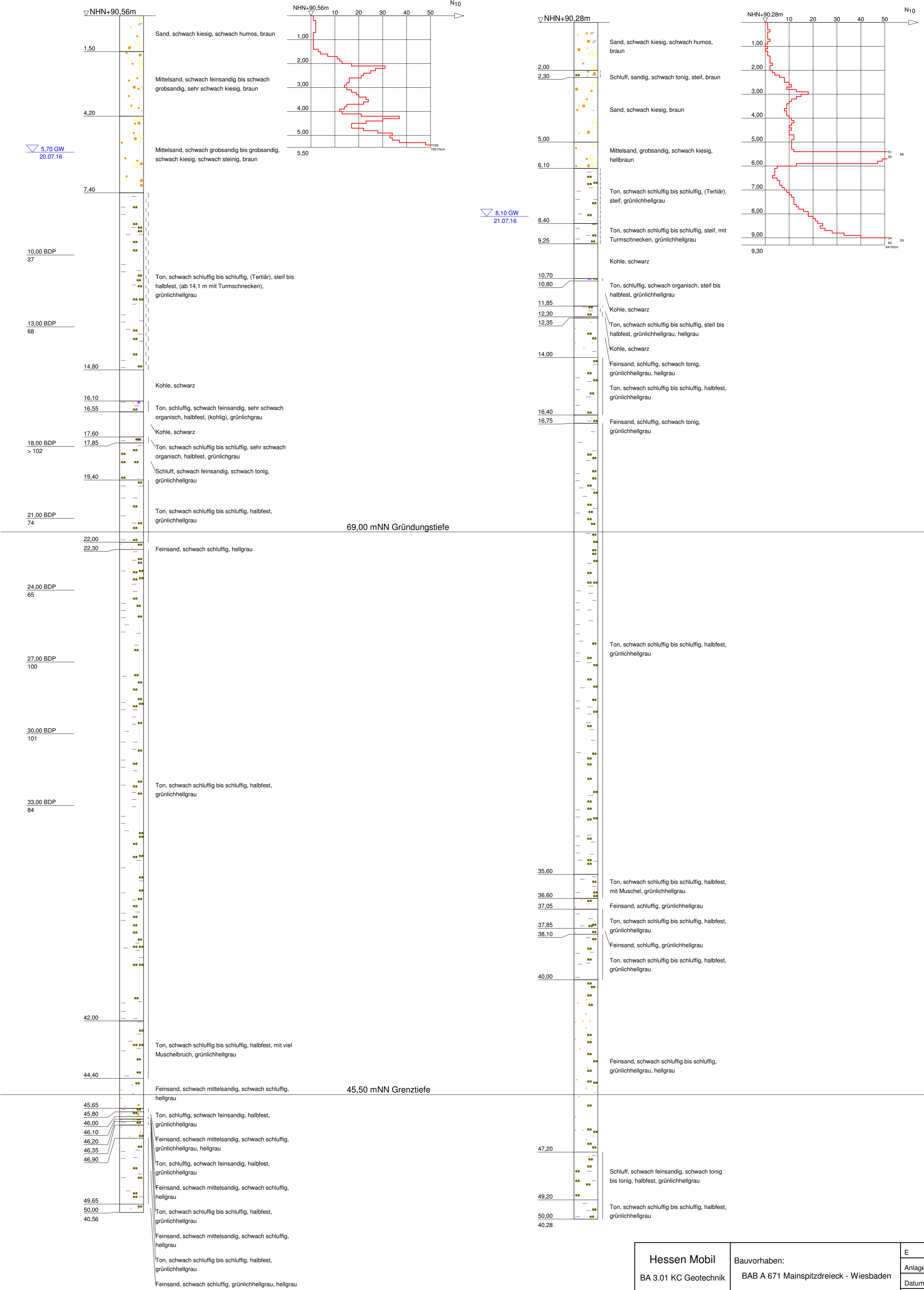
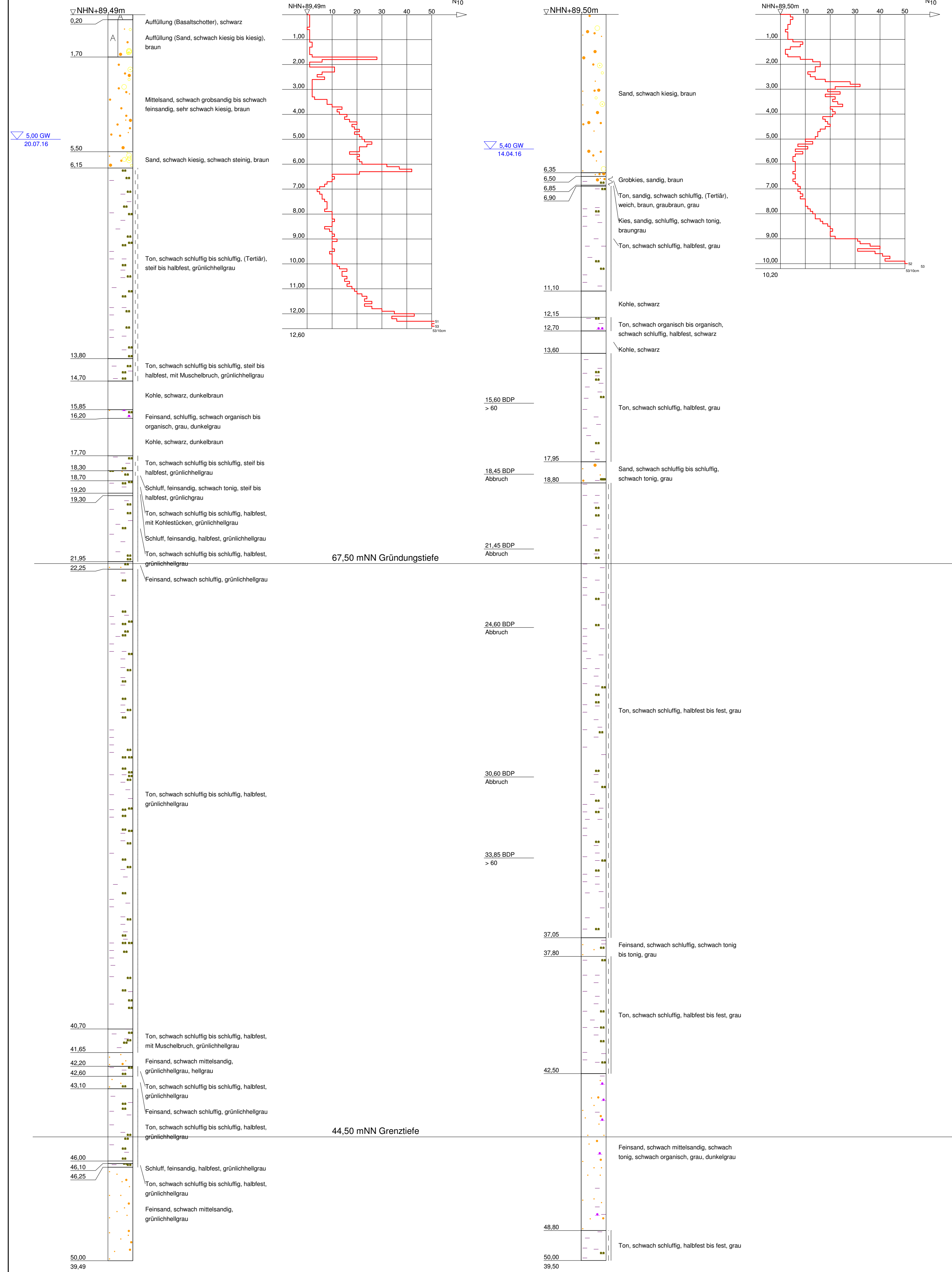
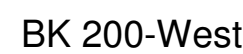
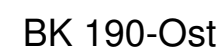
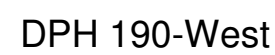
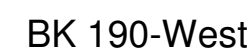












BK 210-West

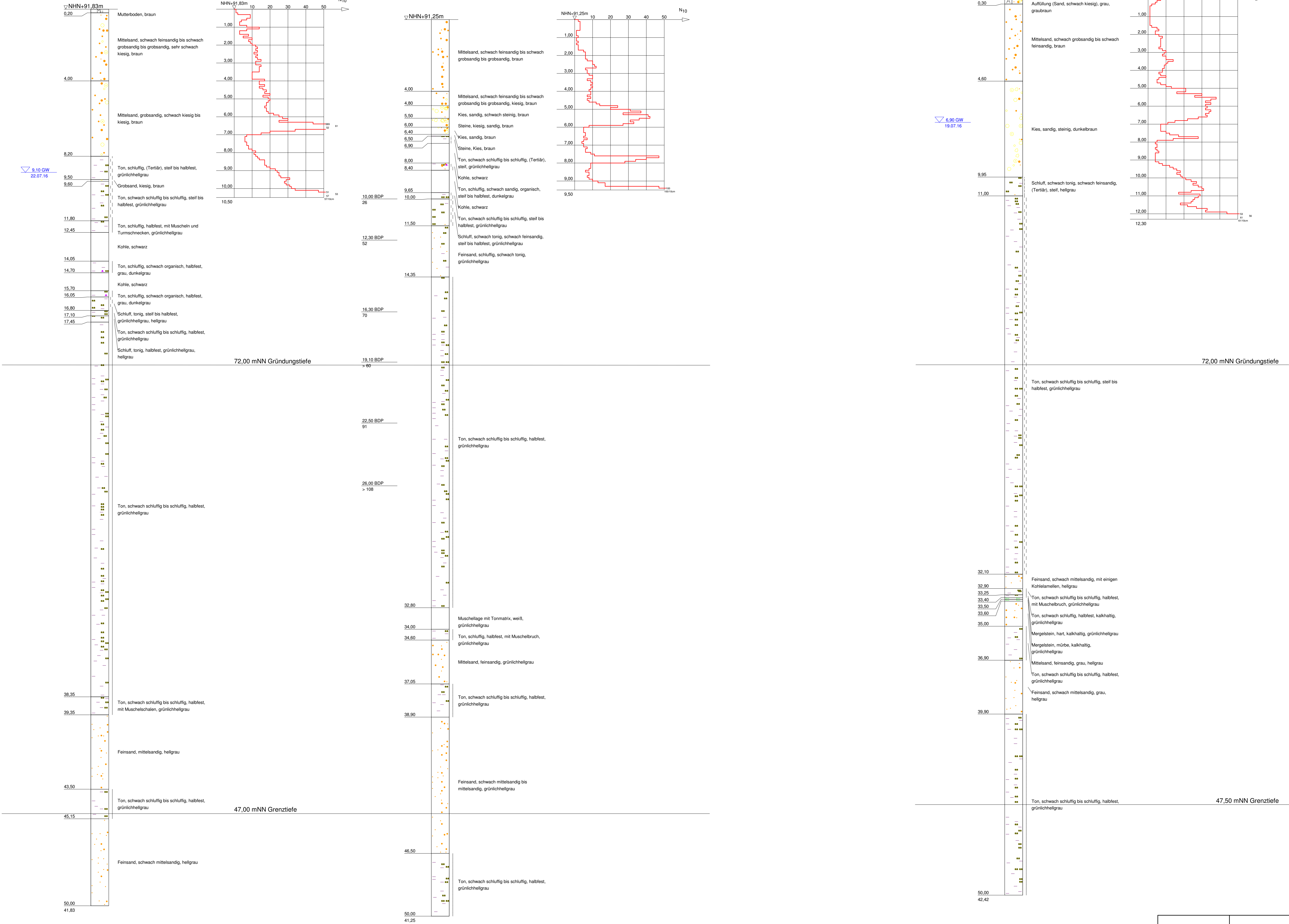
DPH 210-West

BK 210-Ost

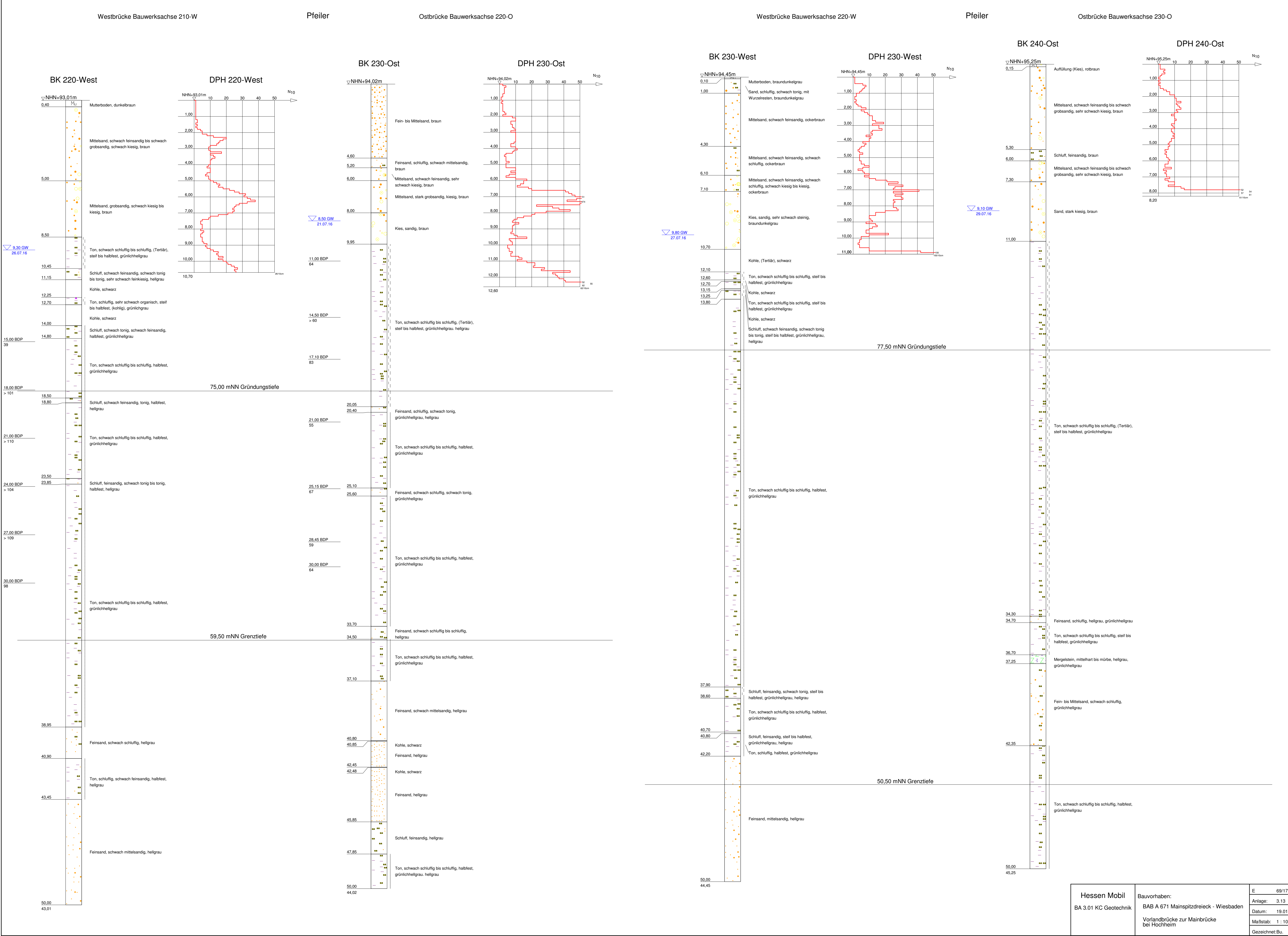
DPH 210-Ost

BK 220-Ost

DPH 220-Ost

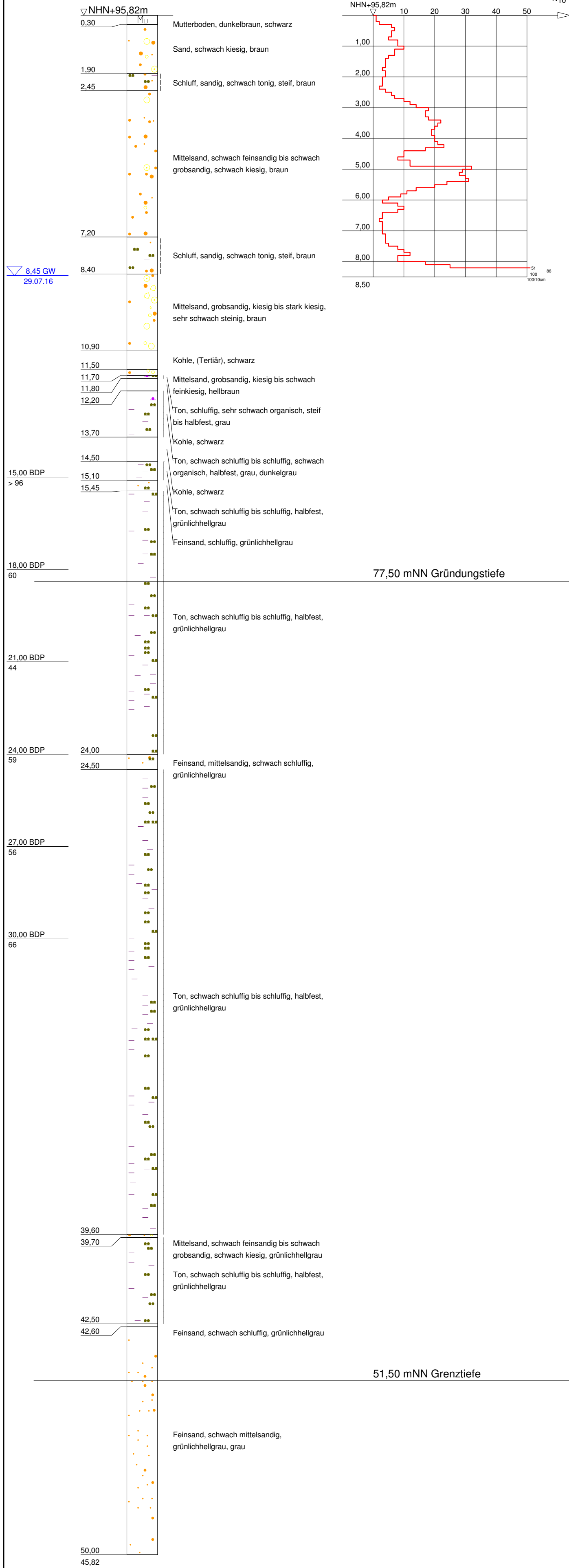






## BK 240-West

## DPH 240-West



## BK 250-Ost

## DPH 250-Ost

