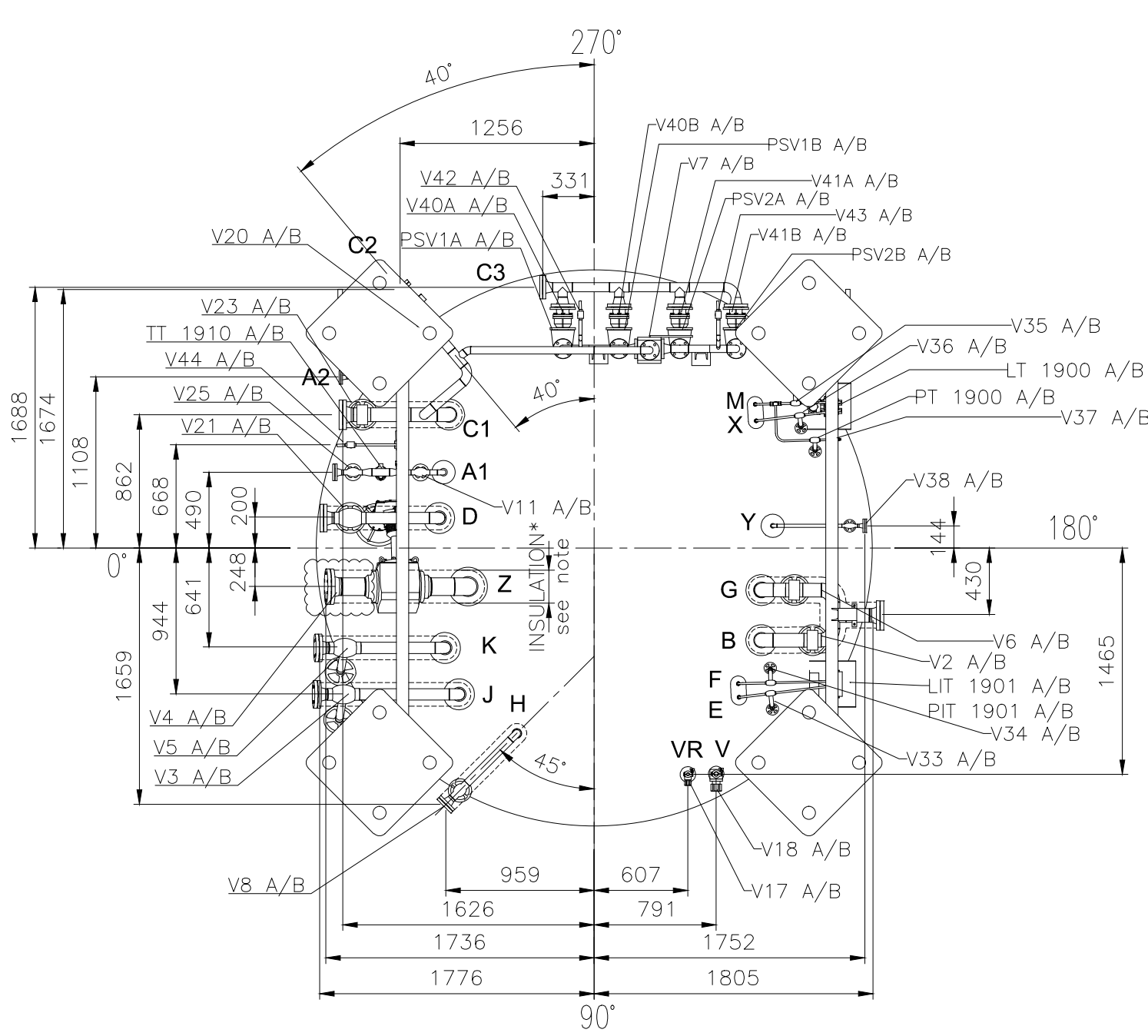
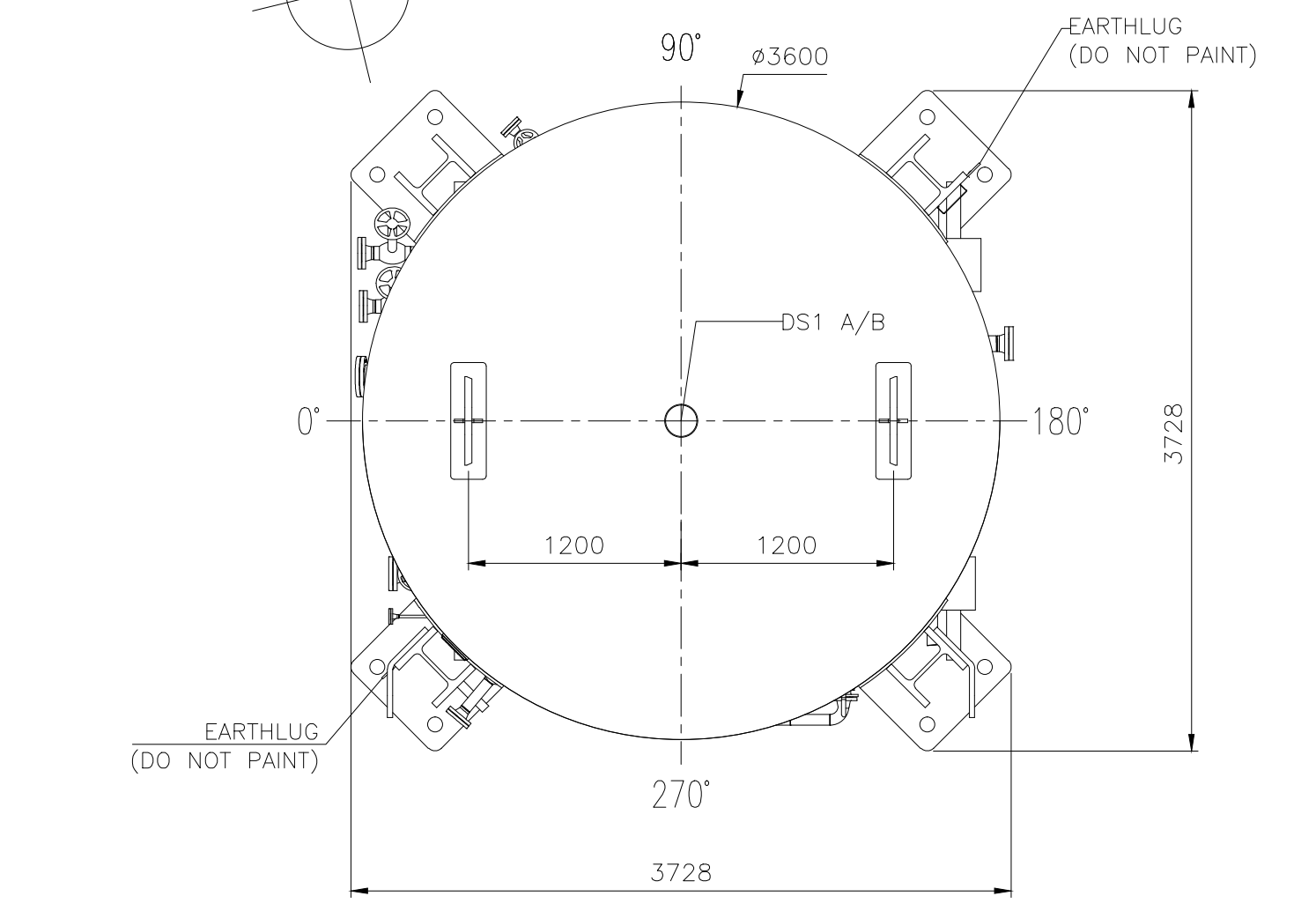


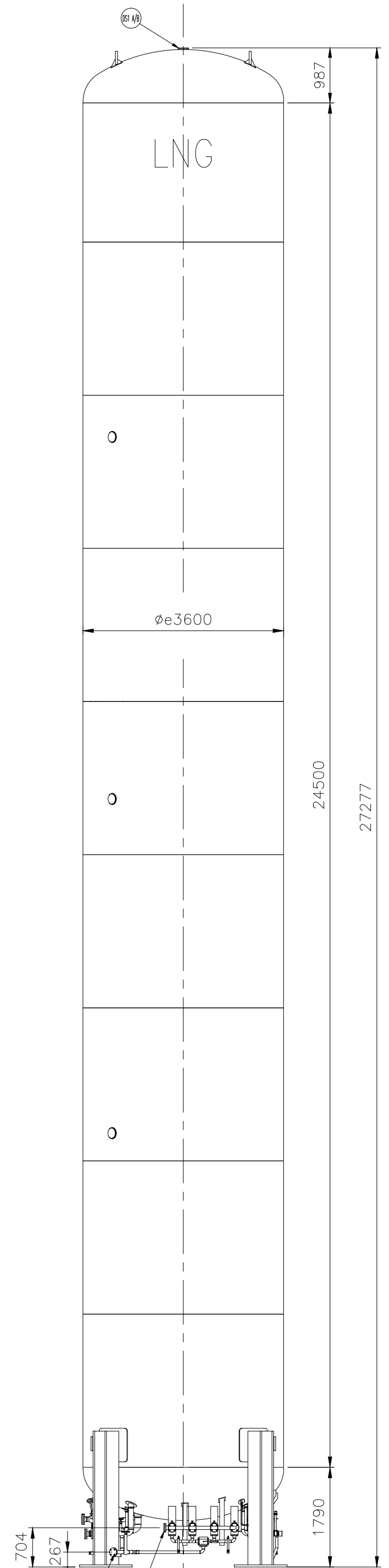
View from "Y"  
scale 2:1



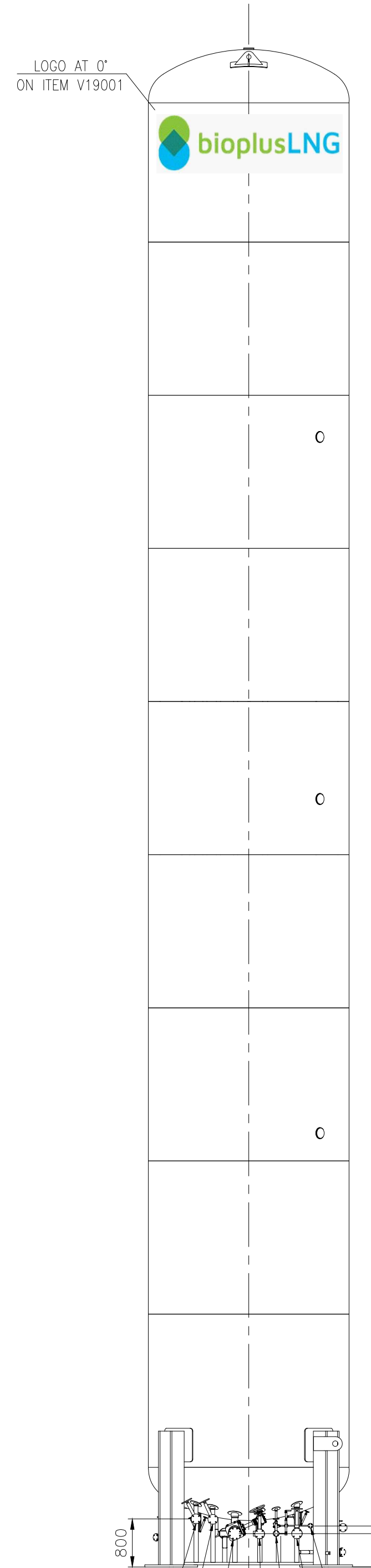
View from "X"  
scale 2:1



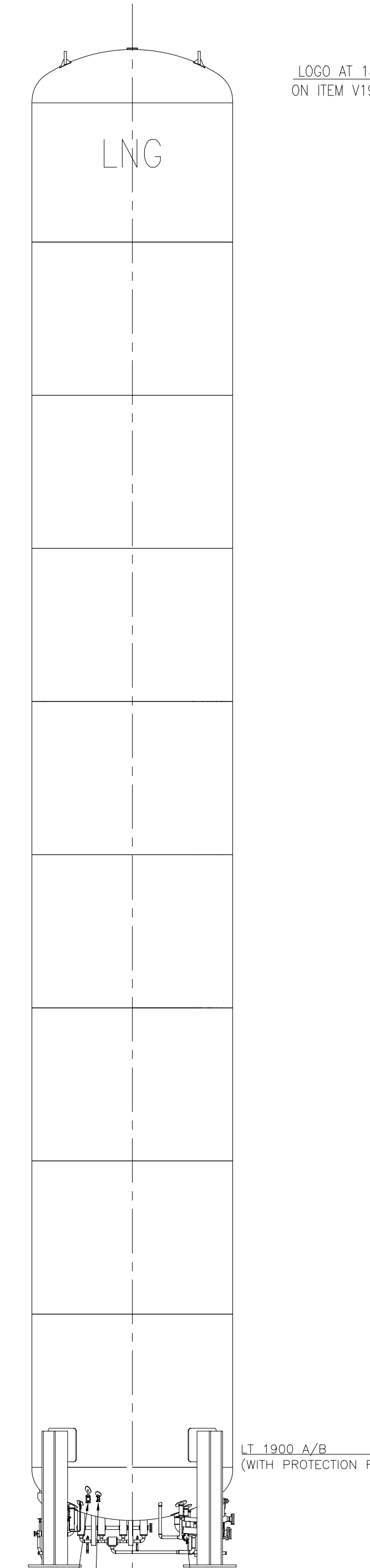
VIEW FROM 270°



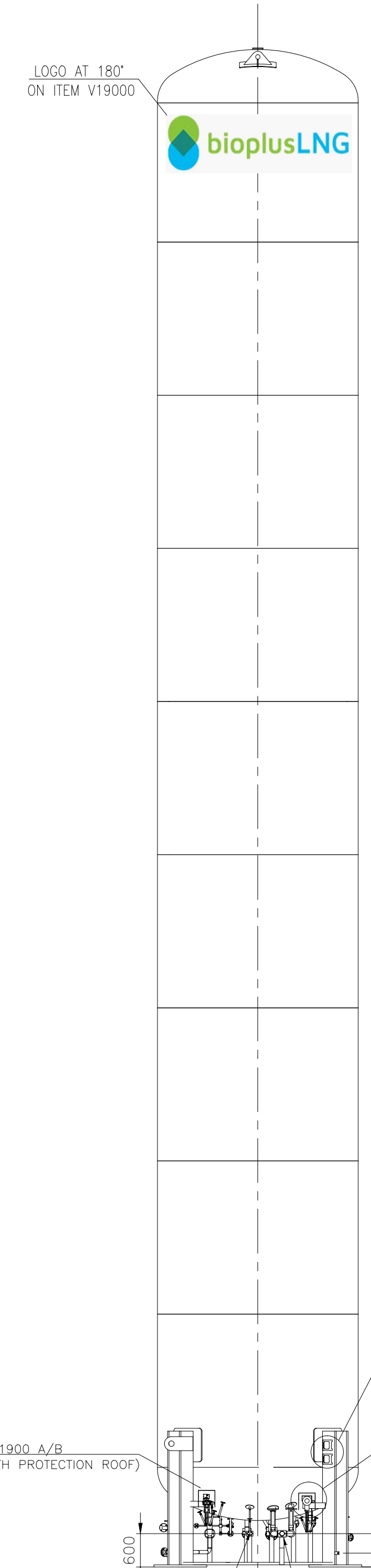
VIEW FROM 0°



VIEW FROM 90°



VIEW FROM 180°



GENERAL DATA		
Design code	EN 13458-2 + A NNEK C	
Equipment No / Name	VT19000 / VT19001	
Client Project	L43374	
Manufacturer project number	11492	
Tank serial number	6212 / 6213	
Fluid group (LNG)	I	
Installation Site	Renzenhof - Germany	
DESIGN DATA		
Medium	INNER VESSEL Liquid Natural Gas (LNG)	OUTER JACKET Evacuated Perite
Design pressure	5 bar(g)	-1.0 bar(g)
Operating pressure	0.5 bar(g)	± 0.1 mbar (g)
Safety valve set pressure	4.5 bar(g)	-----
Design temperature min./max.	-196 / +50 °C	-25 / +50 °C
Operating temperature	-168 °C (min.)	-----
Hydrostatic test pressure	8.58 bar(g)	-----
Gross volume	210 m <sup>3</sup>	-----
Net volume 95%	200 m <sup>3</sup>	-----
Empty Weight	~ 56084 kg	
Gross Weight	~ 58084 kg	
Operating Weight (LNG density 470.9 kg/m <sup>3</sup> )	~ 155731 kg	
Joint efficiency	1	-----
RT scope	100% on longitudinal and circumferential welds	None, not required per code.
Main Material	SA 240 Type 304	S235J2
Corrosion allowance	0.0 mm	0.0 mm
Seismic design	-----	N.A.
Wind design	-----	EUROCODE EN 1991-1-4 & Acc. to PTR15/318
Snow loading	-----	EUROCODE EN 1991-1-3 & Acc. to PTR15/318
Destructive examination	N <sup>1</sup> Welding Coupon of longitudinal joint (1BF+1BR+1T+1MA)	-----
Tank testing Procedures	Acc. to IP 1989	
Dye Penetrant Test	All welds and nozzles	
Color of Outer Jacket	RAL 9010	

PAINTING CYCLE

Painting applicable for all painted components shall be suitable for ambient and class of atmosphere corrosivity "C3" for a minimum expected durability H (high) according to ISO 12944 and SIAD MI specification TS 1.005 cycle 3.1 (see below).

- SURFACE PREPARATION: Grade P2 ISO 8501-3 + Sandblasting min Gr. SA 2.5
- PRIMER: Epoxy Zinc-rich primer CARBOZINC 858. Dry thickness: 80 µm.
- FINISH: Polyurethane CARBOTHANE 134HP RAL 9010. Dry thickness: 80 µm.

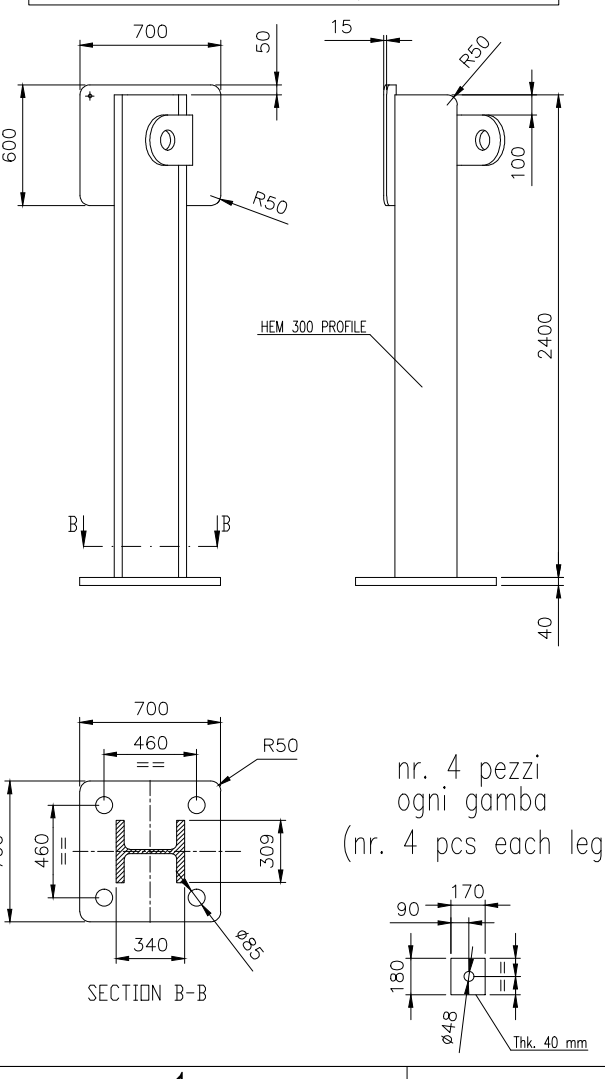
Final dry thickness: 160 µm.

NOTE: FOR NAMEPLATES SEE DWG. "002328-DIS"  
FOR INSTALLATION WILL BE SUPPLY ONE TEMPLATE FOR ITEM

CONNECTIONS LIST

Number	Conn.	Description	Dimensions
-	VR	VACUUM PROBE	NW16
-	V	VACUUM PLUG	NW25
-	DS1 A/B	VACUUM SAFETY DEVICE	TIAPM STD.
-	E-F	LEVEL & PRESSURE IND. & TRANSM. FITEM	ø3/8"
-	X-M	LEVEL TRANSMITTER SCHNEIDER F.	ø3/8"
15	Y	SAMPLE CONNECTION	1/2" WN #150
10	B-G	FILLING FROM PLANT TOP / BOTTOM	3" WN #150
9	C1	RETURN LINE FROM TRUCK	3" #150
8	C2	VENT LINE TO COLD FLARE	2" WN #150
11+14	C3	PSV VENT	2" WN #150
7	D	FROM BUILD UP VAPORIZER / TO VENT	2.1/2" #150
5	A1	TRYCOCK	1" WN #150
6	A2	PSV VENT	3/4" WN #150
4	H	TO BUILD UP VAPORIZER	1.1/2" #150
3	K	PUMP RETURN LINE	2.1/2" #150
2	J	FROM PUMP COOLDOWN	2.1/2" #150
1	Z	TO TRUCK FILLING PUMP SUCTION	4" #150

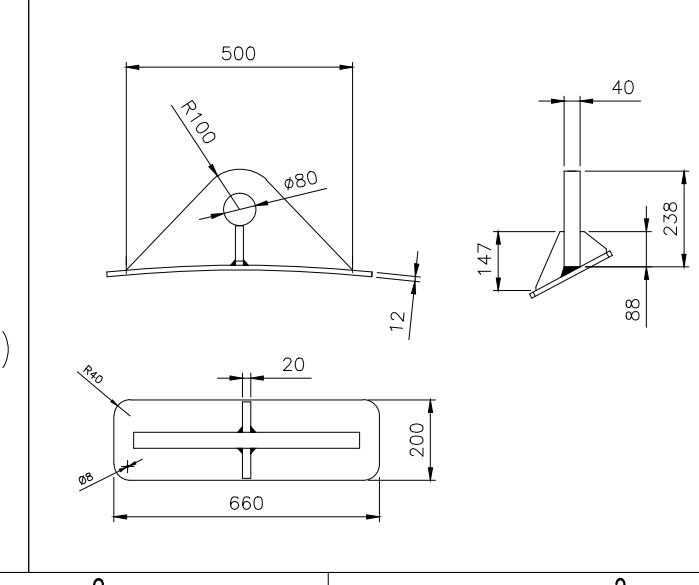
GAMBE DI STAZIONAMENTO  
Stationary legs SCALA/scale 2:1



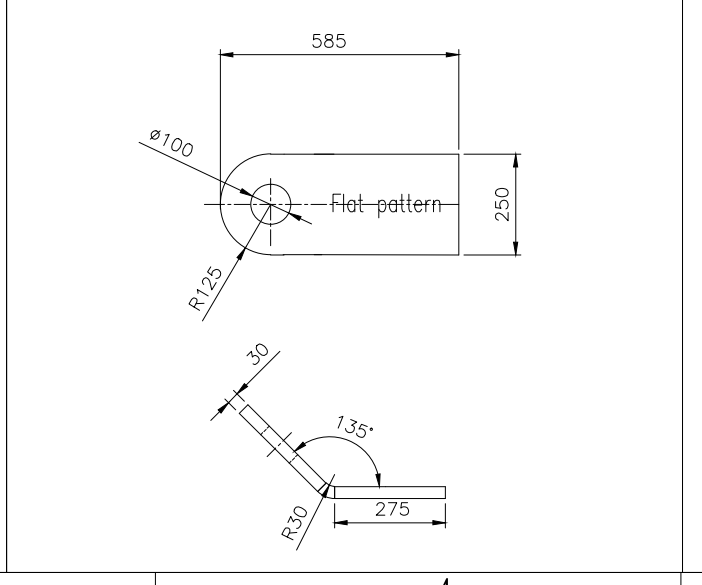
\* COIBENTAZIONE (non in scope fornitura TIAPM)  
INSULATION (not in TIAPM scope)

BOCCHELLO "Z" - 50mm  
NOZZLE "Z"  
BOCCHELLO "J, K, H, C1, D, B/G" - 40mm  
NOZZLE "J, K, H, C1, D, B/G"

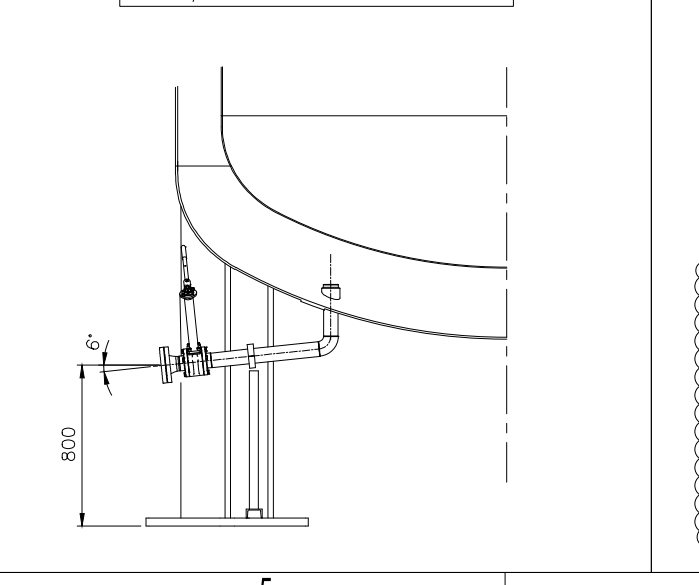
GOLFARI DI SOLLEVAMENTO SUPERIORI  
Lifting lugs SCALA/scale 4:1



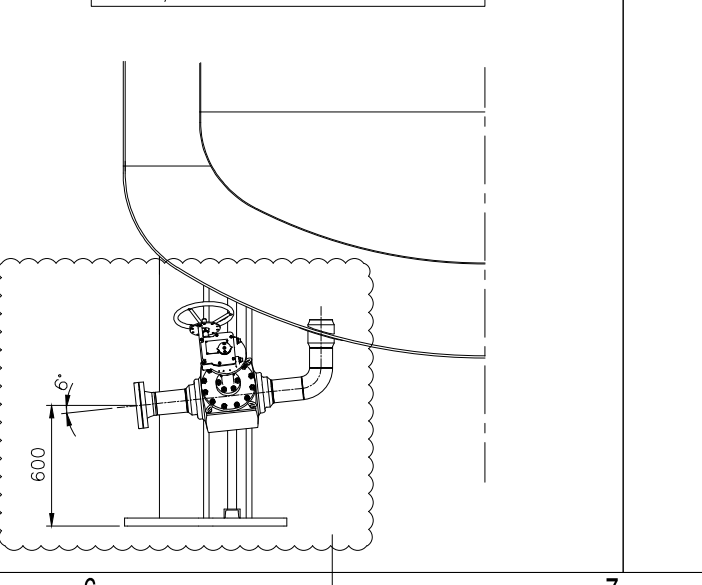
GOLFARI DI SOLLEVAMENTO INFERIORI  
Lifting lugs SCALA/scale 4:1



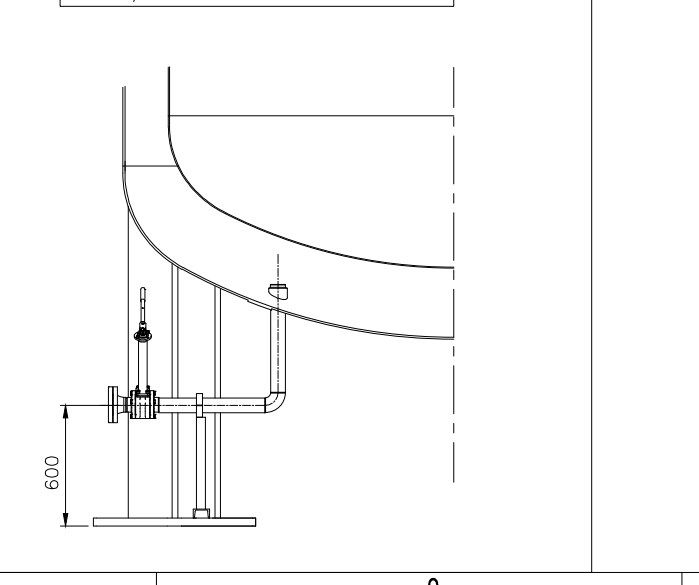
DETTAGLIO CONNESSIONI J-K  
J-K connections detail SCALA/scale 2x



DETTAGLIO CONNESSIONE Z  
Z connection detail SCALA/scale 2x



DETTAGLIO CONNESSIONE D  
D connection detail SCALA/scale 2x



REV.	DESCRIPTION	DATE	APPR.	DATE	APPR.	DATE
7	REVISED AS MARKED	25/03/24	MA	25/03/24	GZ	25/03/24
6	REVISED AS MARKED	18/03/24	MA	18/03/24	GZ	18/03/24
5	REVISED AS MARKED	06/03/24	MA	06/03/24	GZ	06/03/24
4	REVISED AS MARKED	18/02/24	MA	18/02/24	GZ	18/02/24
3	REVISED AS MARKED	15/11/23	MA	15/11/23	GZ	15/11/23
2	REVISED AS MARKED	31/09/23	MA	31/09/23	GZ	31/09/23
1	GENERAL REVISION	27/06/23	MA	27/06/23	GZ	27/06/23
0	FIRST ISSUE	31/03/23	MA	31/03/23	GZ	31/03/23

TECHNOIMPIANTI APM S.A.S.

CLIENTE Customer: SIAD M.I. 11492 (L43374)

ITEM: VT19000-VT19001

NUM. SERIE Serial Num.: 6212-6213

DESIGNO. N. Drawing No.: 002147-LAY [EST106096]

SCALE Scale: 1:75

REV. REV.: 6

FORMATO-Size: A0

Project - Nr.: DG-001115

Zeichnungsbenennung: LNG LIQUEFACTION PLANT

GENERAL ASSEMBLY

GENERAL ANORDUNG

F-Tech Standortkurzname A-Art An-Nr A-Teil D-Art Ltd-Nr Blatt Änd

520 REZH 646 001 036 PAN 001 01-0E