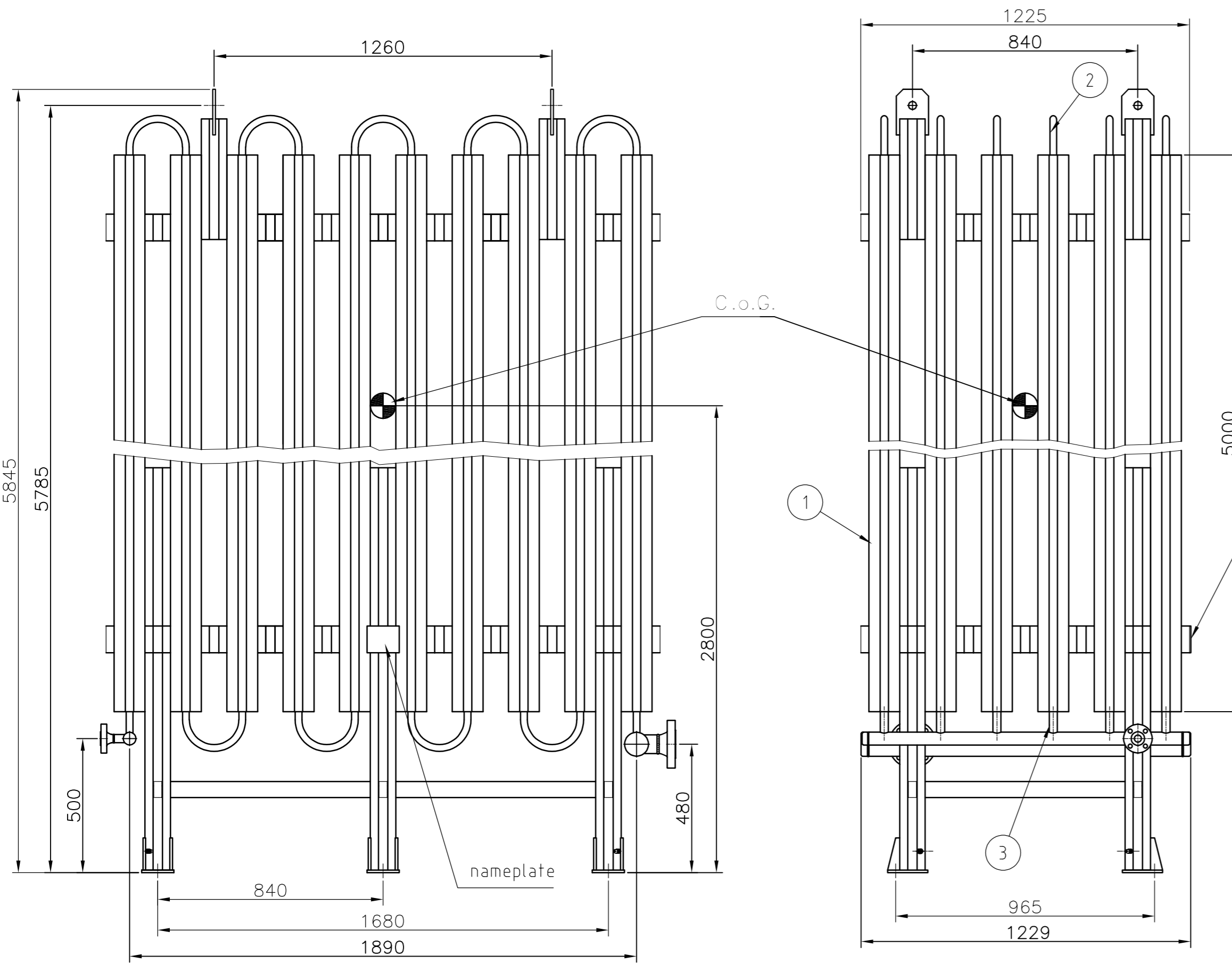


Rev.	Data/Date	Descrizione/Description	Dis/Dwr	Contr/Ckd	Appr/Apr
0	26/06/2023	First emission	Cardia M.	Arseni P.	Roveta M.
1	21/07/2023	Revision following comments	Cardia M.	Arseni P.	Roveta M.
2	31/07/2023	Revision following comments	Cardia M.	Arseni P.	Roveta M.



E17002A (VMP1000L-S)		E17002B (VMP1000L-S)	
AUSRÜSTUNGSTYP EQUIPMENT TYPE	E17002A (VMP1000L-S)	AUSRÜSTUNGSTYP EQUIPMENT TYPE	E17002B (VMP1000L-S)
MONAT/JAHR MONTH/YEAR	MATR. NO. SERIAL NO.	MONAT/JAHR MONTH/YEAR	MATR. NO. SERIAL NO.
FLÜSSIGKEIT FLUID	FLÜSSIGKEIT FLUID	FLÜSSIGKEIT FLUID	FLÜSSIGKEIT FLUID
AUSLEGDUNGSDRUCK (PS) PRESSURE DESIGN	AUSLEGDUNGSDRUCK (PS) PRESSURE DESIGN	AUSLEGDUNGSDRUCK (PS) PRESSURE DESIGN	AUSLEGDUNGSDRUCK (PS) PRESSURE DESIGN
PROFDRUCK (PT) TEST PRESSURE	PROFDRUCK (PT) TEST PRESSURE	PROFDRUCK (PT) TEST PRESSURE	PROFDRUCK (PT) TEST PRESSURE
AUSLEGDUNGSTEMPERATUR (TS) TEMPERATURE DESIGN	AUSLEGDUNGSTEMPERATUR (TS) TEMPERATURE DESIGN	AUSLEGDUNGSTEMPERATUR (TS) TEMPERATURE DESIGN	AUSLEGDUNGSTEMPERATUR (TS) TEMPERATURE DESIGN
VOLUME lt. 160 TARA VOLUME lb. 35.27 TARA	VOLUME lt. 160 TARA VOLUME lb. 35.27 TARA	VOLUME lt. 160 TARA VOLUME lb. 35.27 TARA	VOLUME lt. 160 TARA VOLUME lb. 35.27 TARA

**Nozzles list**

Item	ND	Rating	Service
INLET	1"	#150 RF (*)	LIQUID FLUID INLET
OUTLET	2"1/2	#150 RF (*)	GAS FLUID OUTLET

(\*) FLANGE COMPATIBLE WITH STANDARD ANSI 16.5

**DATI DI PROGETTO - DESIGN DATA**

CORPO PRINCIPALE Main body	
Pressione di progetto Ps Design pressure	[barg] 16
Pressione di esercizio Operating pressure	[barg] 10
Pressione di prova idraulica Hydraulic test pressure	[barg] 22.9
Temperatura di progetto Design temperature	[°C] -196; +65
Temperatura di esercizio Operating temperature	[°C] -168
Fluido - fluid Stato fisico - physic state	Nitrogen liquid - gas
Perdite di carico Pressure drop	[mbar] <300
Capacità massima Volume	[dm³] 160
Peso a vuoto Empty weight	[kg] 1200
NORME CODE	EN13445 + PED 2014/68/EU
CATEGORIA GIUNTI SALDATI WELDING JOINT EFFICIENCY	3b
ENTE ISPETTORE NOTIFIED BODY	TÜVSUD
CLASSE APPARECCHIO CLASS OF EQUIPMENT	III
SPECIFICA DI SALDATURA WELDING SPECIFICATION	WKF/VMP/1
N°MATRICOLA SERIAL NUMBER	23096/A 23096/B

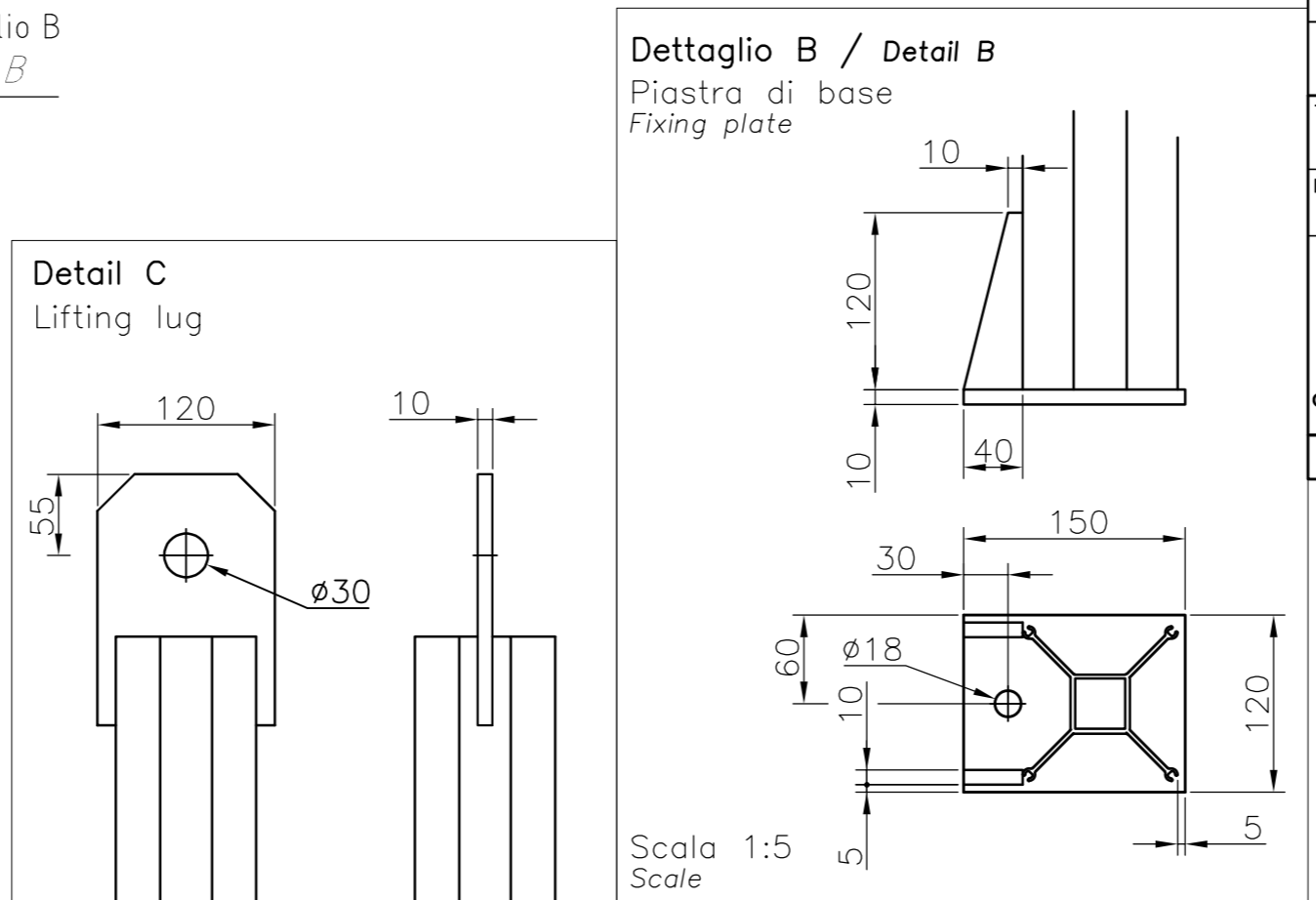
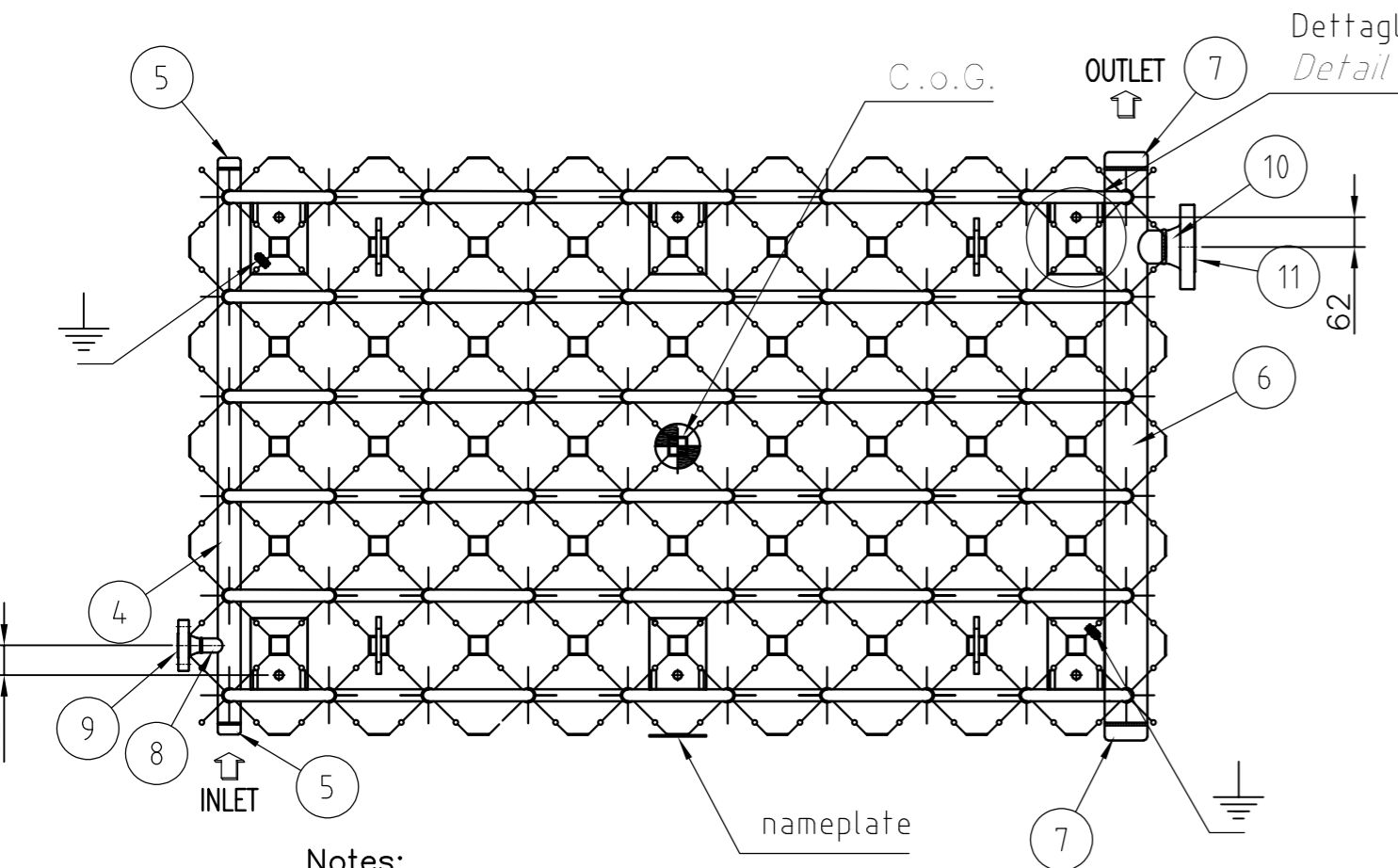
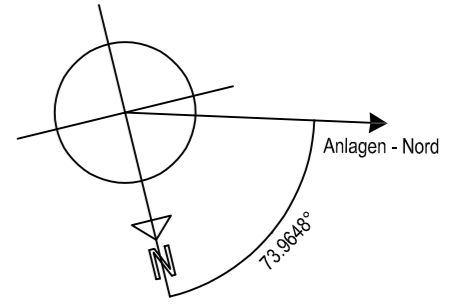
**CE MARKING ACCORDING TO PED: Required.**

**Bill of materials**

Ref.	Description	Q.ty	Material
11	Flange 2"1/2 #150 WN RF	1	EN AW 6082/6061 T6
10	Graft $\phi$ 70 on pipe $\phi$ 90	1	EN AW 6082 T6
9	Flange 1" #150 WN RF	1	EN AW 6082/6061 T6
8	Graft $\phi$ 30 on pipe $\phi$ 48	1	EN AW 6082 T6
7	Cap $\phi$ 90	2	EN AW 6082 T6
6	Tube $\phi$ 90x5 - 6 holes	1	EN AW 6060/6063 T4
5	Cap $\phi$ 48	2	EN AW 6082 T6
4	Tube $\phi$ 48x3.5 - 6 holes	1	EN AW 6060/6063 T4
3	Socket	12	EN AW 6060/6063 T4
2	Elbow	54	EN AW 5754 H111
1	Extruded finned pipe L=5000 mm	60	EN AW 6060/6063 T4

**TOLLERANZE / Tolerances**  
DOVE NON DIVERSAMENTE INDICATO / Unless otherwise specified

- LA TOLLERANZA SULLE DIMENSIONI ANGOLARI E'  $\pm 2^\circ$  (RILEVABILI TRAMITE MISURA DELLE COORDINATE LINEARI)
- The angular tolerance is  $\pm 2^\circ$  (measurable by means linear coordinates)
- LA TOLLERANZA SULLE DIMENSIONI LINEARI E'  $\pm 3$ mm PER METRO CON MASSIMO DI  $\pm 25$ mm
- The linear tolerance is  $\pm 3$ mm per meter up to  $\pm 25$ mm maximum



- Notes:**
- Flange holes straddling axes;
  - Foundation bolts not included in scope of supply;
  - Commissioning spare parts included in scope of supply;
  - No. 2 grounding for each item;
  - All dimensions in millimeters, unless otherwise indicated.

SIAD MI Tag No.	E17002A/B	<b>SIAD MACCHINE IMPIANTI S.P.A.</b>
SIAD MI Project No.	L43374	
SIAD MI Project Name	LNG 140 TPD	SIAD MI Dwg No.

**TITOLO / Title**  
E17002 - VMP1000L-S

IMPIANTO o ASSEMBLIE / Plant or Assembly  
LIN back-up atmospheric vaporizer: VMP1000C-S

MATERIALE / Material	EN AW 6060/6063	QTA' / Qty	2	PESO / Weight	1200 kg
CLIENTE / Client	SIAD MI	COMMESSA / Job	5619		
DISEGNATO / Drawn	Cardia M.	APPROVATO / Approved	Arseni P.	DISEGNO N. / No drawing	5619-0000
DATA / Date	31/07/2023	SCALA / Scale	1:15	FOGLIO / Sheet	1 of 1

FORMATO / Format: A2

Documento di proprietà CRIOTEC IMPIANTI S.p.A. La società tutelerà i propri diritti da esso derivati in sede civile e penale a termini di legge.  
This document is CRIOTEC IMPIANTI S.p.A.'s property. The company will protect its rights deriving from such property in civil and penal courts according to law.

Rev. Nr.	Datum	Beschreibung	erstellt	geprüft	freigegeben	Datum	freigegeben

Projekt - Nr.	DG-001115	Standort / Projektname	LNG LIQUEFACTION PLANT
Datum	31.07.2023	Name	Cardia M.
Gepr.	31.07.2023	Arseni P.	
Freig.	31.07.2023	Roveta M.	
Schutzvermerk ISO 16016 beachten	A2	Maßst. 1/	1:15
Urspr.: EST 109806 Rev.0A	Ers.f.:	Ers.d.:	

**bioplusLNG**

**OGE**

F-Tech	Standortkurzname	A-Art	Art-Nr	A-Teil	D-Art	Lfd.-Nr	Blatt	Änd
520	REZH	646	001	034	ZEN	001	01-	0A