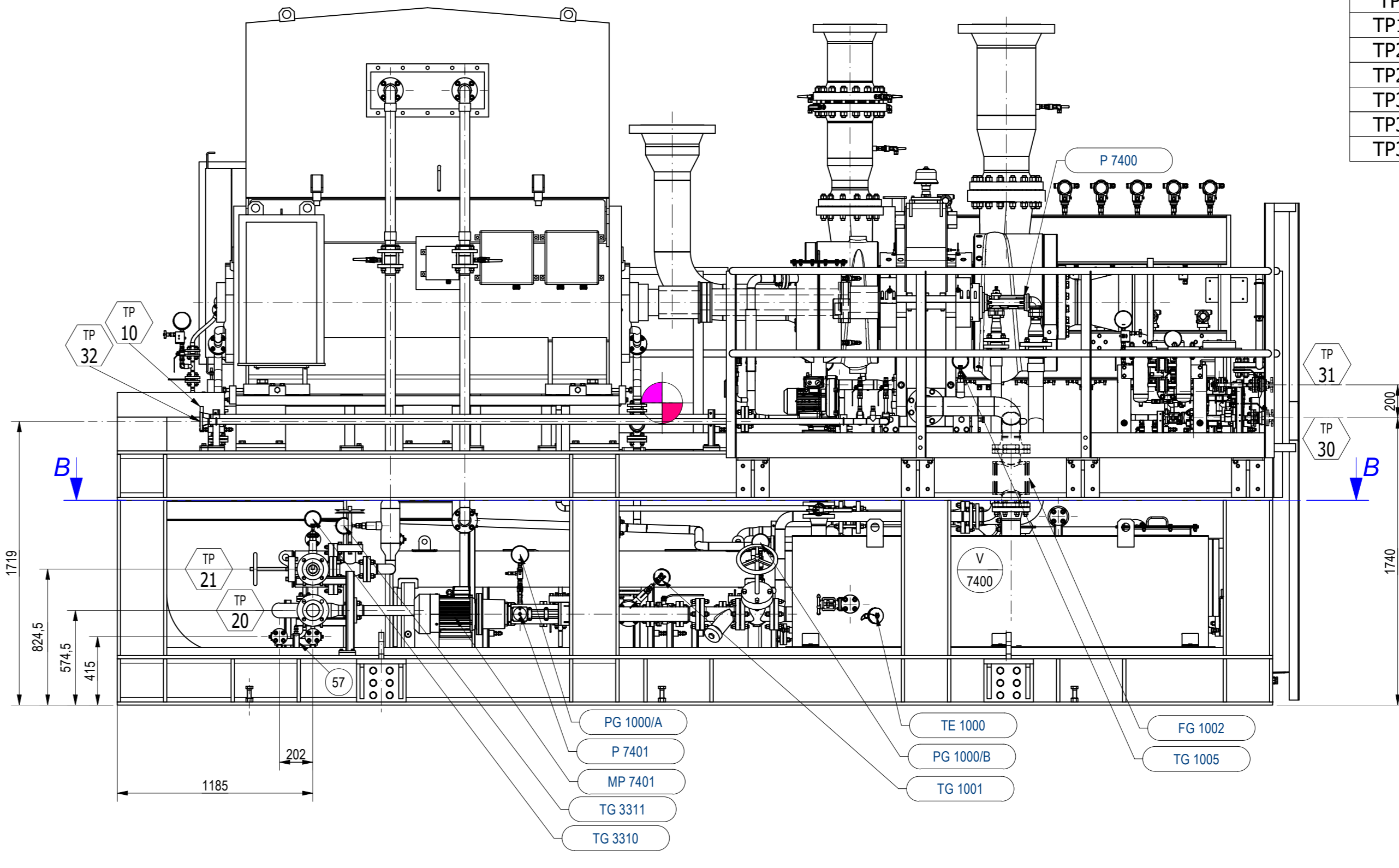
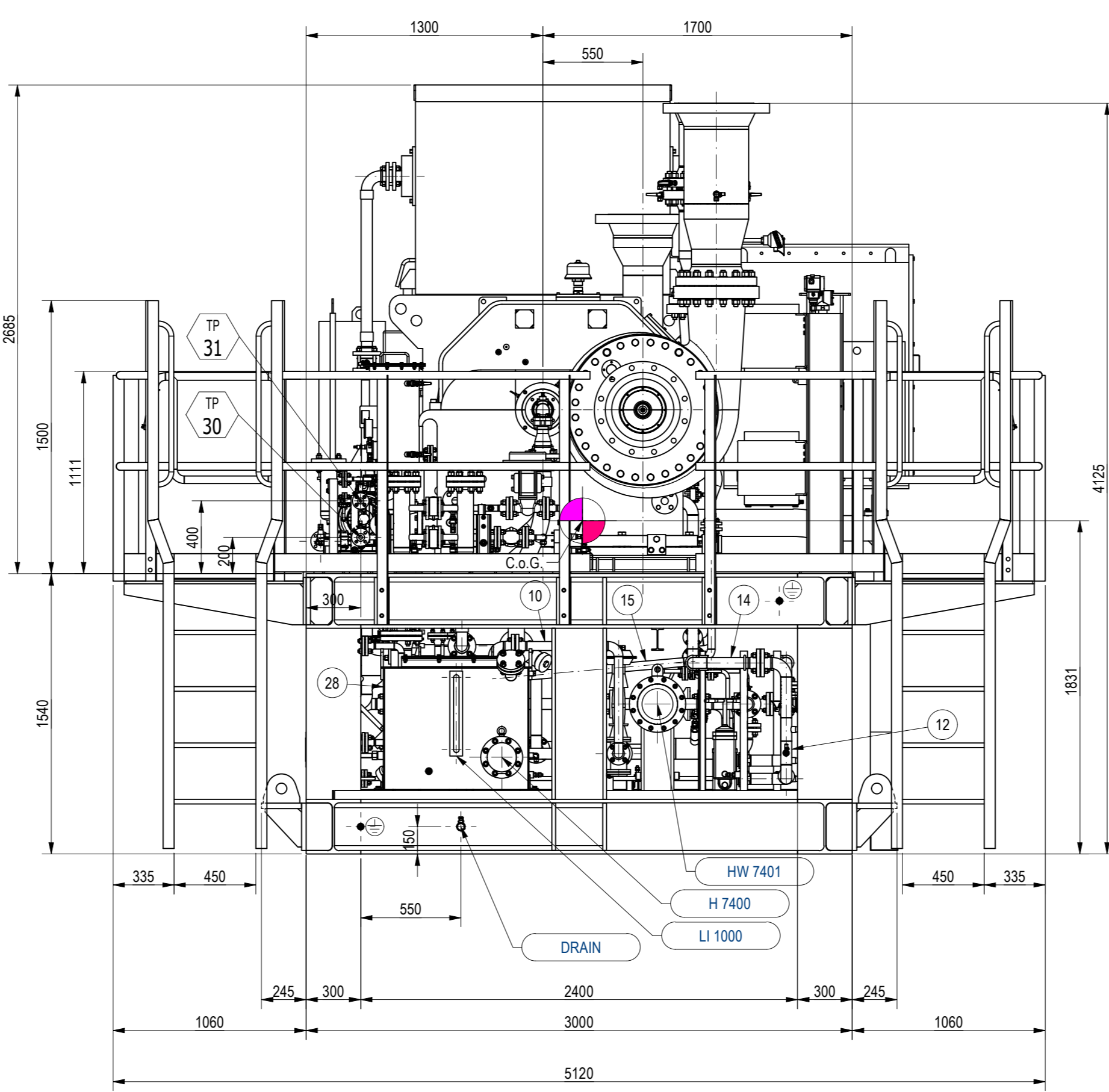
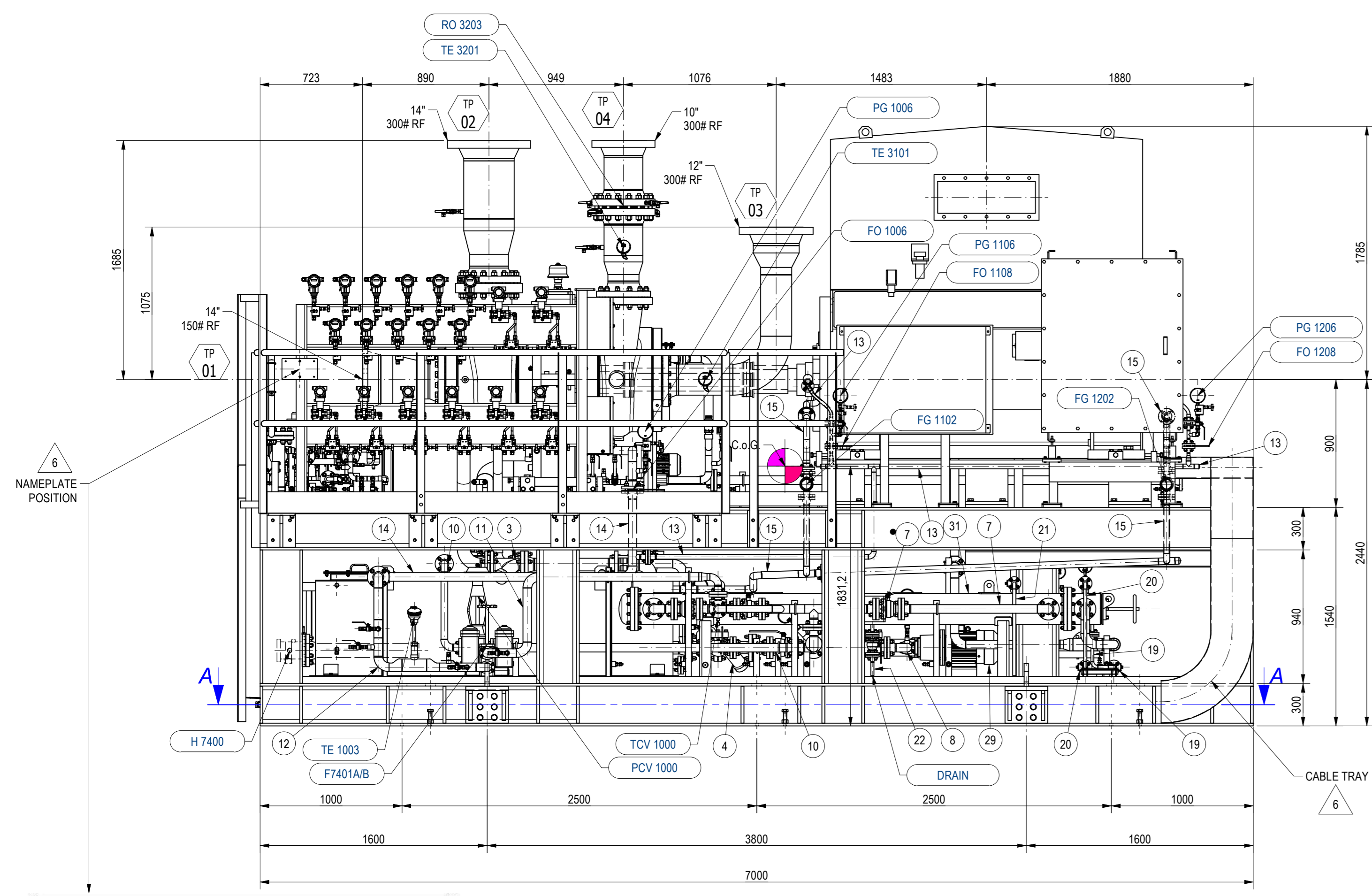


POS	DESCRIPTION	PIPE CONN.
TP1	PROCESS GAS - STAGE 1 - NITROGEN INLET	14" 300# RF
TP2	PROCESS GAS - STAGE 1 - NITROGEN OUT	14" 300# RF
TP3	PROCESS GAS - STAGE 2 - NITROGEN INLET	12" 300# RF
TP4	PROCESS GAS - STAGE 2 - NITROGEN OUT	10" 300# RF
TP10	LUBE OIL SYSTEM - AIR VENT	2" 150# RF
TP20	COOLING WATER SUPPLY - ELECTRIC MOTOR COOLER	3" 150# RF
TP21	COOLING WATER RETURN	3" 150# RF
TP30	SEAL SYSTEM - NITROGEN INLET	3/4" 150# RF
TP31	SEAL SYSTEM - INSTRUMENT AIR INLET	1/2" 150# RF
TP32	SEAL SYSTEM - PRIMARY VENT	1" 150# RF

- NOTES:**
- TOTAL WEIGHT = 35000 KG
 - MEASUREMENT UNIT = mm
 - HEAT DISSIPATION = 90 kW
 - PAINTING SPECIFICATION = GTS22/214
 - EARTHING BOSS MAT. INOX

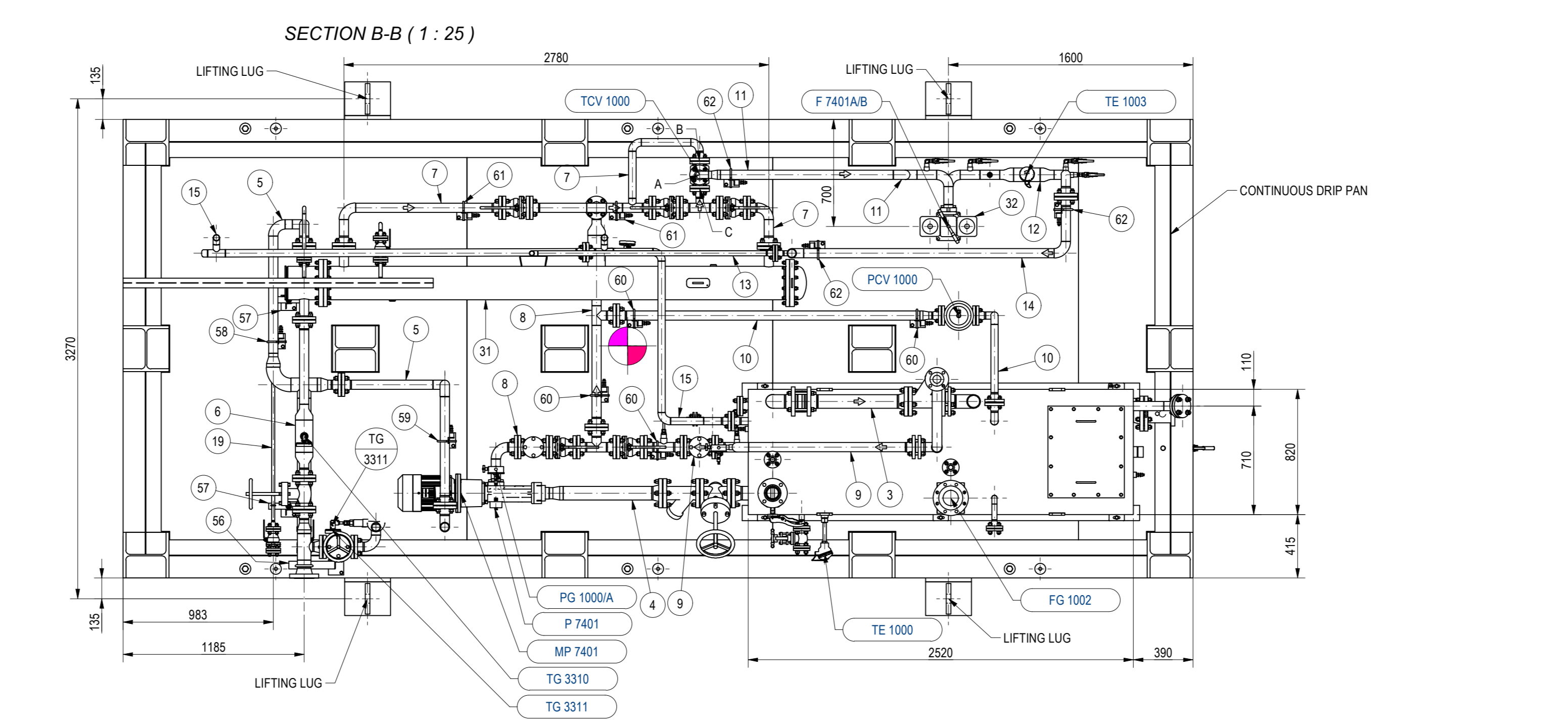
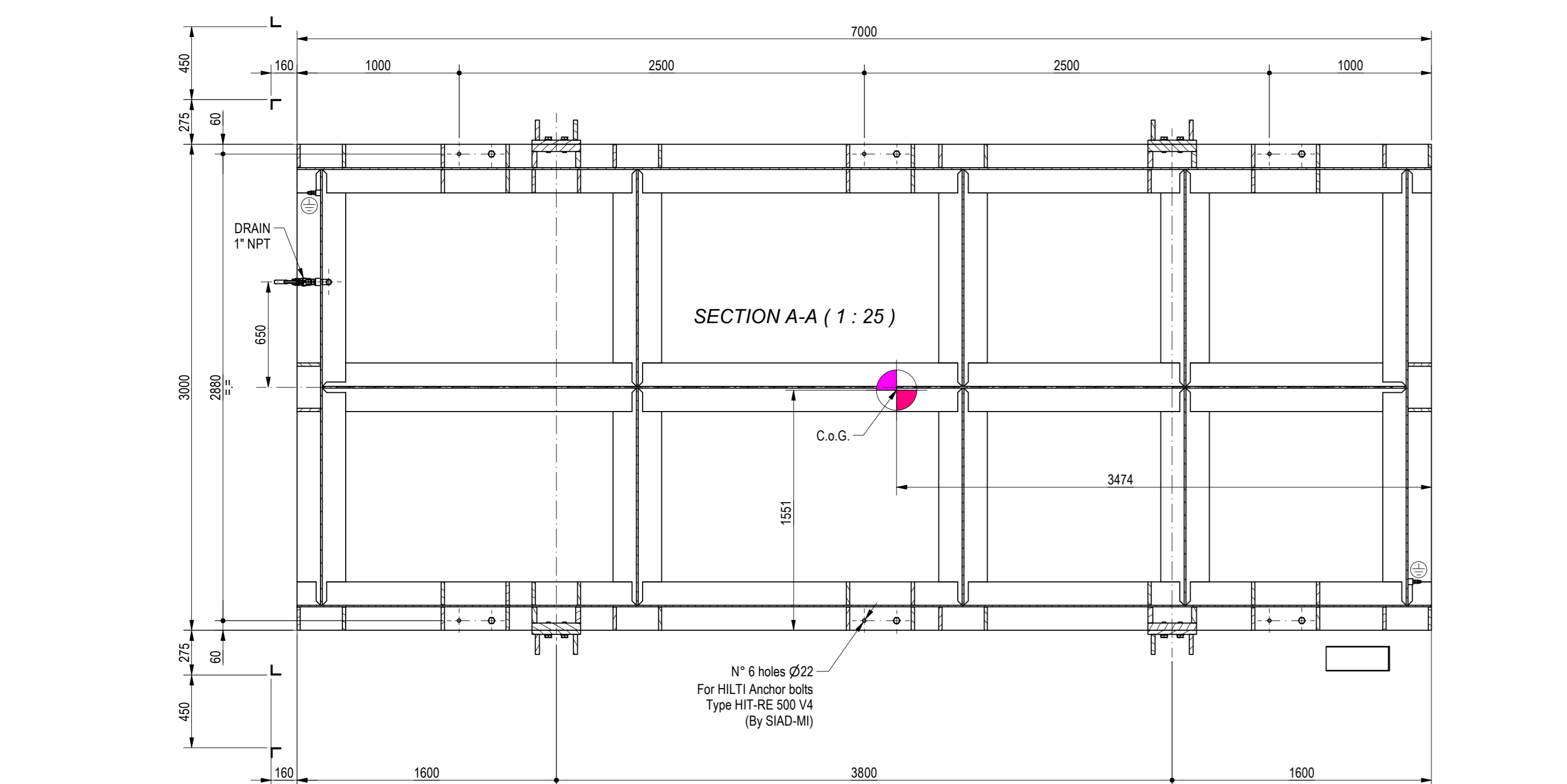
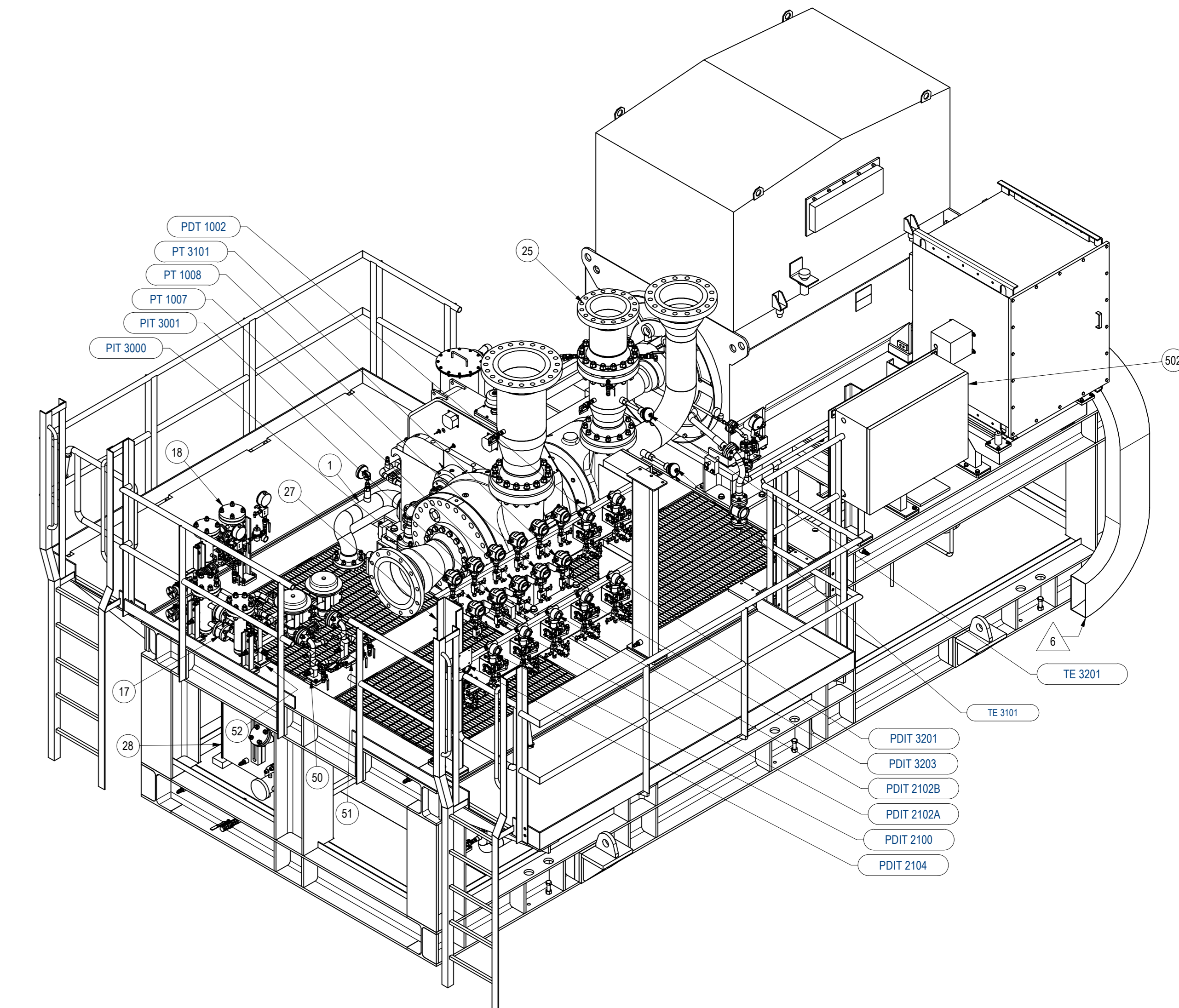
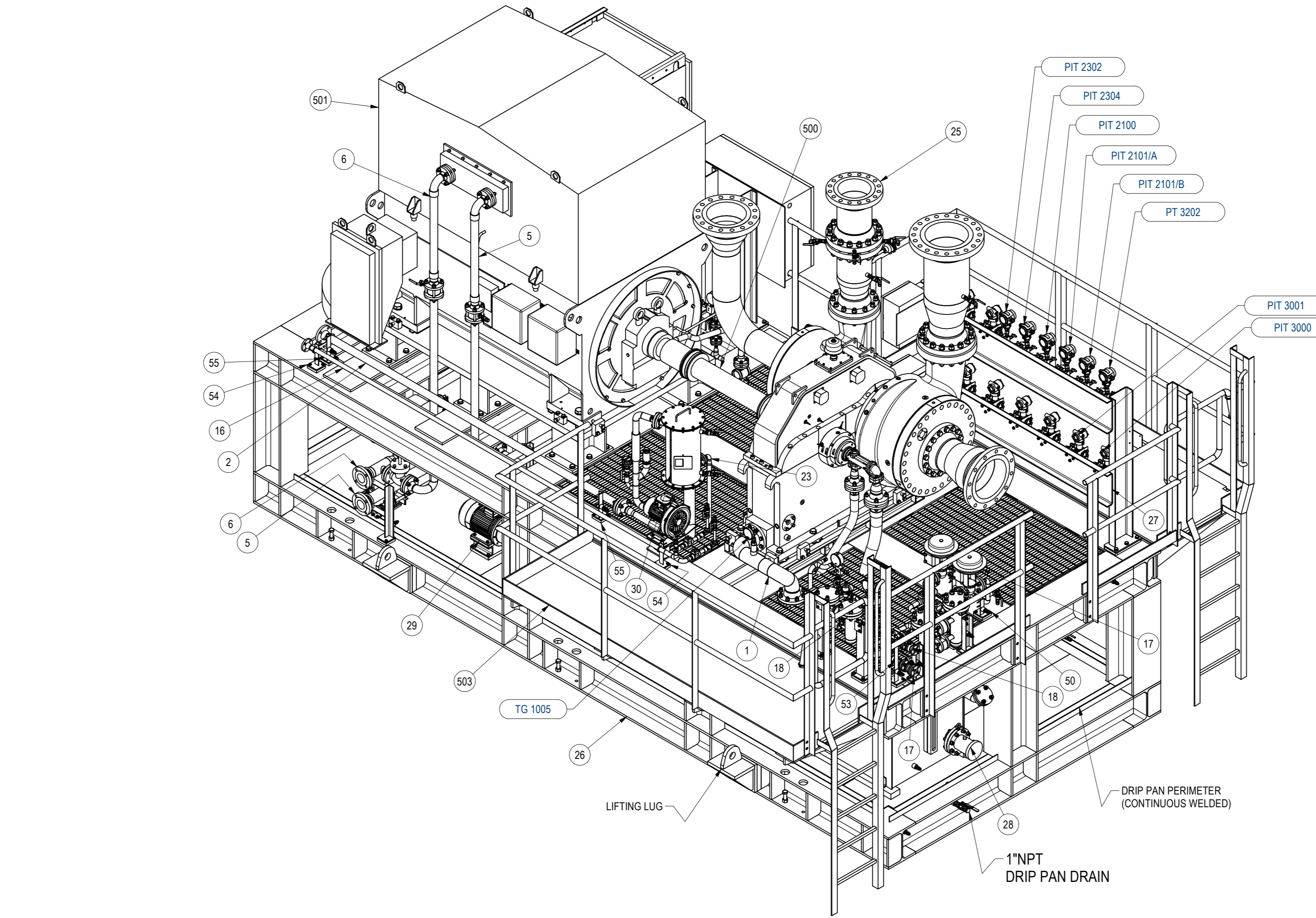
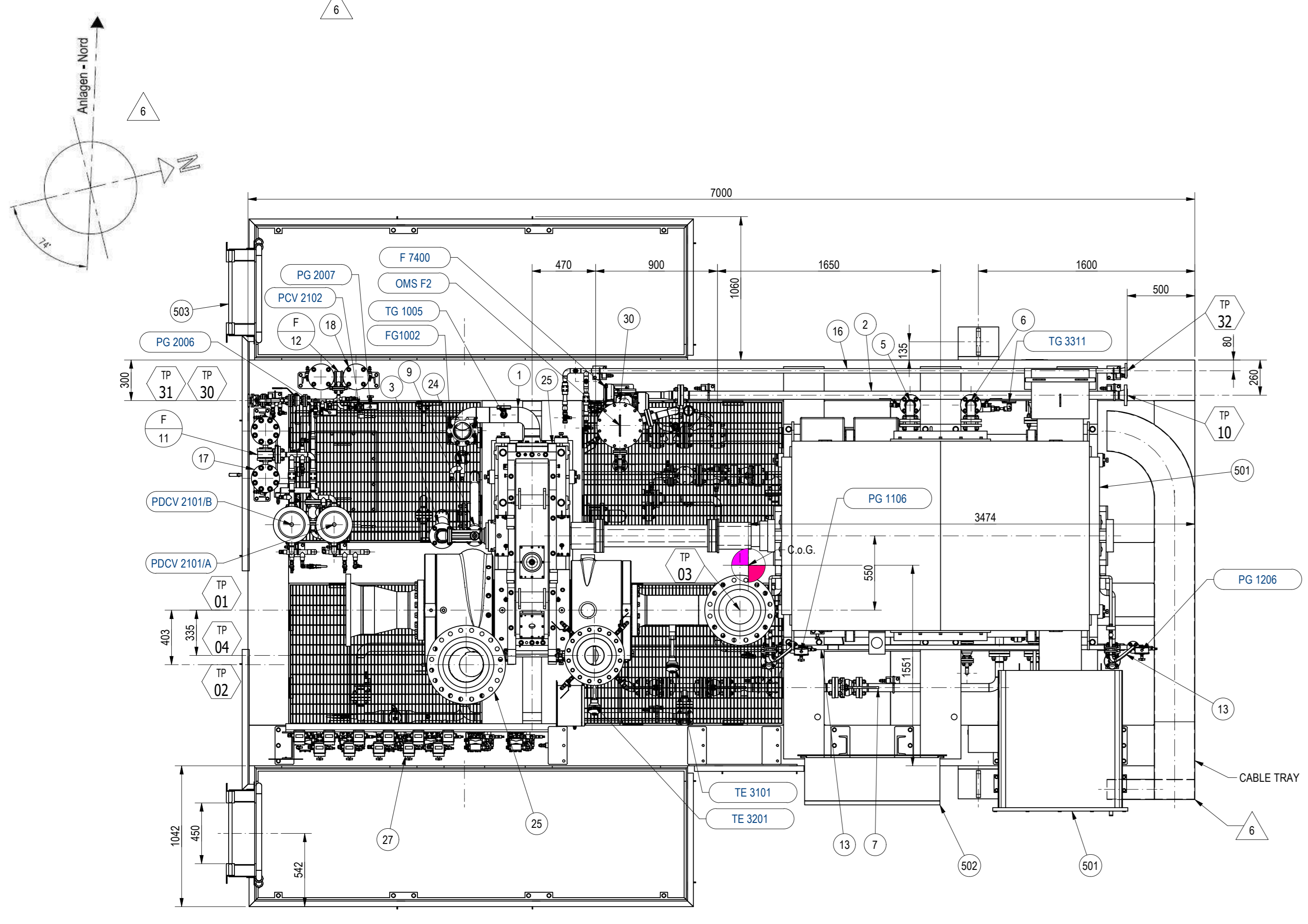
POS	QTY	DESCRIPTION	WGT	NOTE	COO. CODES
1	1	GEAR BOX - LUBE OIL DRAIN	63	PIPING 01	K8643
2	1	OIL MIST - AIR VENT	22.8	PIPING 02	K8649
3	1	MAIN PUMP - LUBE OIL SUCTION	71.6	PIPING 03	K8650
4	1	AUX PUMP - LUBE OIL SUCTION	70.3	PIPING 04	K8651
5	1	COOLING WATER SUPPLY - ELECTRIC MOTOR COOLER	81.2	PIPING 05	K8652
6	1	COOLING WATER RETURN - ELECTRIC MOTOR COOLER	108.1	PIPING 06	K8653
7	1	LUBE OIL TO OIL COOLER	88.1	PIPING 07	K8654
8	1	LUBE OIL FROM AUX PUMP	63.8	PIPING 08	K8655
9	1	LUBE OIL FROM MAIN PUMP	70.3	PIPING 09	K8656
10	1	LUBE OIL TO P.V. LINE	83.6	PIPING 10	K8657
11	1	LUBE OIL FROM TCV TO OIL FILTER	15.3	PIPING 11	K8658
12	1	LUBE OIL TO ELECTRIC MOTOR & GEAR BOX	14.9	PIPING 12	K8659
13	1	LUBE OIL TO ELECTRIC MOTOR	21.2	PIPING 13	K8661
14	1	LUBE OIL TO GEAR BOX	29.1	PIPING 14	K8662
15	1	LUBE OIL ELECTRIC MOTOR DRAIN	61.4	PIPING 15	K8663
16	1	SEAL SYSTEM - NITROGEN PRIMARY VENT	16.3	PIPING 16	K8664
17	1	SEAL SYSTEM - NITROGEN INLET	174.9	PIPING 17	K8890
18	1	SEAL SYSTEM - INSTRUMENTS AIR INLET	65.8	PIPING 18	K8891
19	1	COOLING WATER DRAIN	7.5	PIPING 19	L0598
20	1	COOLING WATER VENT	9.2	PIPING 20	L0597
21	1	OIL COOLER VENT	4.2	PIPING 21	L0597
22	1	OIL COOLER DRAIN	3.2	PIPING 22	L0600
23	1	OIL MIST DRAIN	4.3	PIPING 23	L0601
24	1	SEAL SYSTEM - OIL DRAIN	2.9	PIPING 24	L1347
25	1	COMPRESSOR PIPING	4882.7	CC051653	K2407
26	1	BASEPLATE	14703.2	CC051389	K8500
27	1	INSTRUMENTS PANEL ASSEMBLY	317.5	CGA5411	K8506
28	1	OIL RESERVOIR - ASSEMBLY	621.7	CGA5413	K8498
29	1	AUX PUMP ASSEMBLY	92.7	CGA5193	K8502
30	1	OIL MIST FAN MS40	114	CGA5478	K8511
31	1	BEM 810-2 OIL COOLER	232.2	231102	K9455
32	1	DUPLEX OIL FILTER DU251.10 API 30 SAE 2" 3000#	96.8		K8991
50	1	PIPING SUPPORT 01" H=125	3.1		L1337
51	1	PIPING SUPPORT 01" H=204	3.3		L1334
52	1	PIPING SUPPORT 03/4" H=200 01" H=360	5.4		L1338
53	1	PIPING SUPPORT 01/2" H=400 03/4" H=200	3.9		L1339
54	2	PIPING SUPPORT 01" H=179	6.5		L1340
55	2	PIPING SUPPORT 02" H=192.5	6.8		L1341
56	1	PIPING SUPPORT 02" H=24.5 - 03" H=274.5	6.9		L1342
57	2	PIPING SUPPORT - N° 2 x 01/2" H=110	7.5		L1343
58	1	PIPING SUPPORT 02" H=289.5	3.6		L1344
59	1	PIPING SUPPORT 02" H=815	5.3		L1348
60	4	PIPING SUPPORT 02" H=437	14.2		L1349
61	2	PIPING SUPPORT 02" H=520	8.7		L1350
62	3	PIPING SUPPORT 02" H=745	15.1		L1351
500	1	GIUNTO FRANCO TOSI HNS 245-AH-ICP DBSE-900	180	HNE24528303	L1351
501	1	MOTOR AMI 560L2L BSS	10030		
502	1	LB RIO 1000/750/350	189.1		
503	1	WALKWAYS AND STAIRS	2365.2		



FRANCO TOSI
 Franco Tosi Meccanica Spa
 20045 Legnano (MI)
 Piazza Monumento, 12

Serial Nr.	Tag Nr.
Compressor Model	Year of Manufacture
Input Speed	rpm
Rated Capacity	Nm³/h
Handled Gas	Inlet Temperature
Inlet Pressure	bar(a)
Max. allow. work temp. @stage exhaust	°C

CE DIRECTIVE 2006/42/EC



REV	DATE	DESCRIPTION	PREPARED	CHECKED	APPROVED
6	16/01/2024	FINAL VERSION	STC	GI	
5	17/11/2023	REVISED AFTER CUSTOMER COMMENTS	STC	GI	
4	15/09/2023	REVISED AFTER CUSTOMER COMMENTS	STC	GI	
3	09/08/2023	REVISED AFTER CUSTOMER COMMENTS	STC	GI	
2	17/07/2023	REVISED AFTER CUSTOMER COMMENTS	STC	GI	
1	21/06/2023	REVISED AFTER CUSTOMER COMMENTS	STC	GI	
0	23/05/2023	FIRST ISSUED - PRELIMINARY	STC	GI	

COMPARISON 144/23
 SCALE A0
 SHEET 1 OF 1

SIAD GERMANY
 RECYCLE NITROGEN COMPRESSOR TRAIN
 GENERAL ARRANGEMENT
 CGA49903