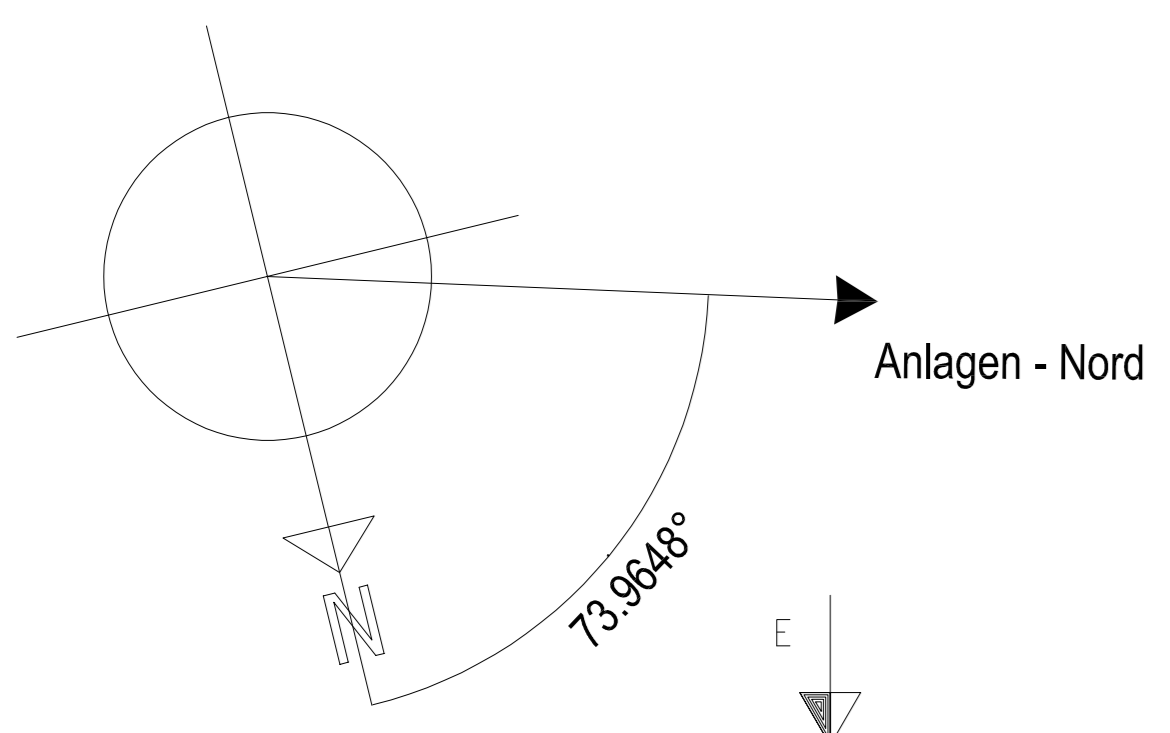
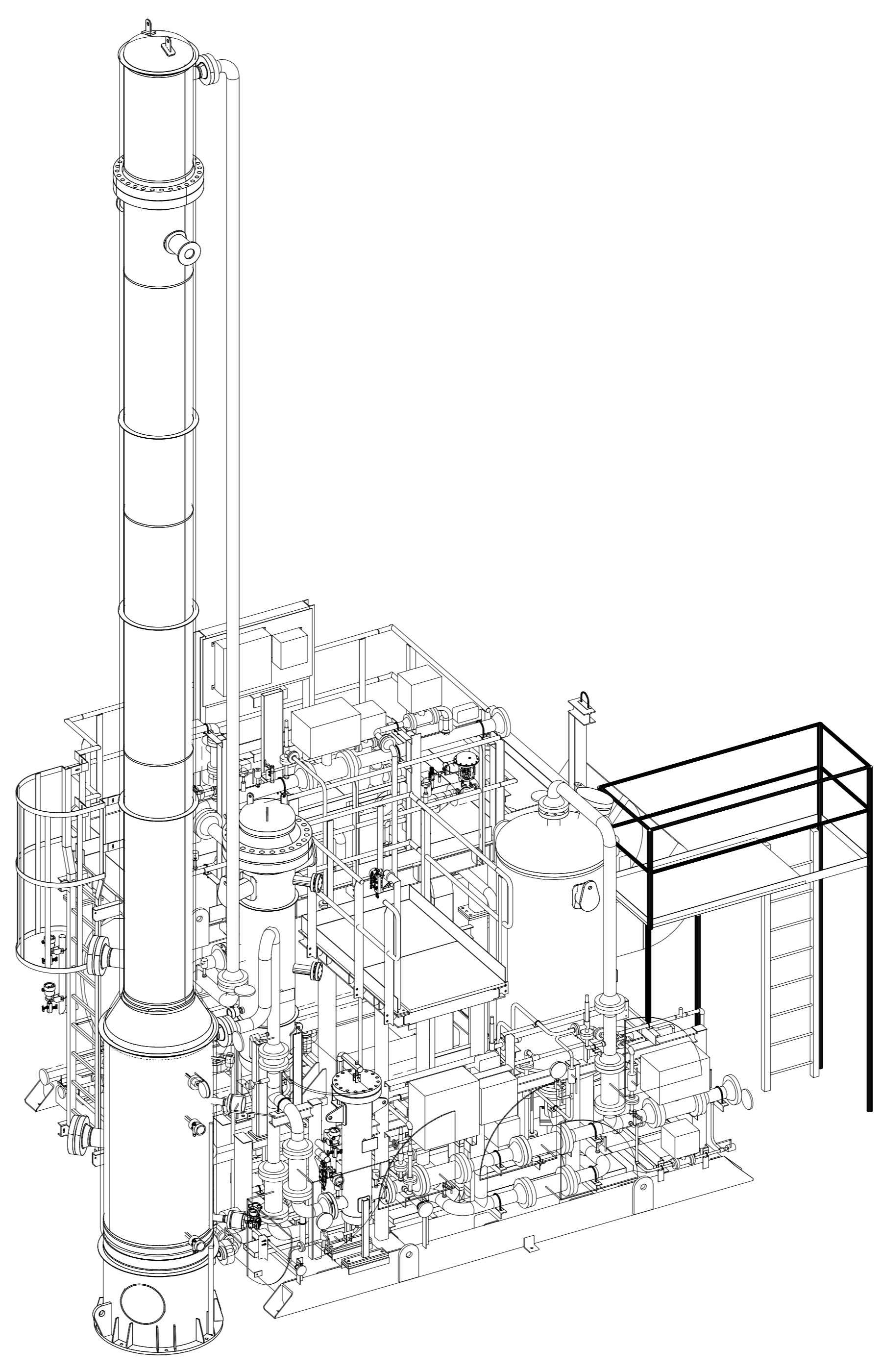


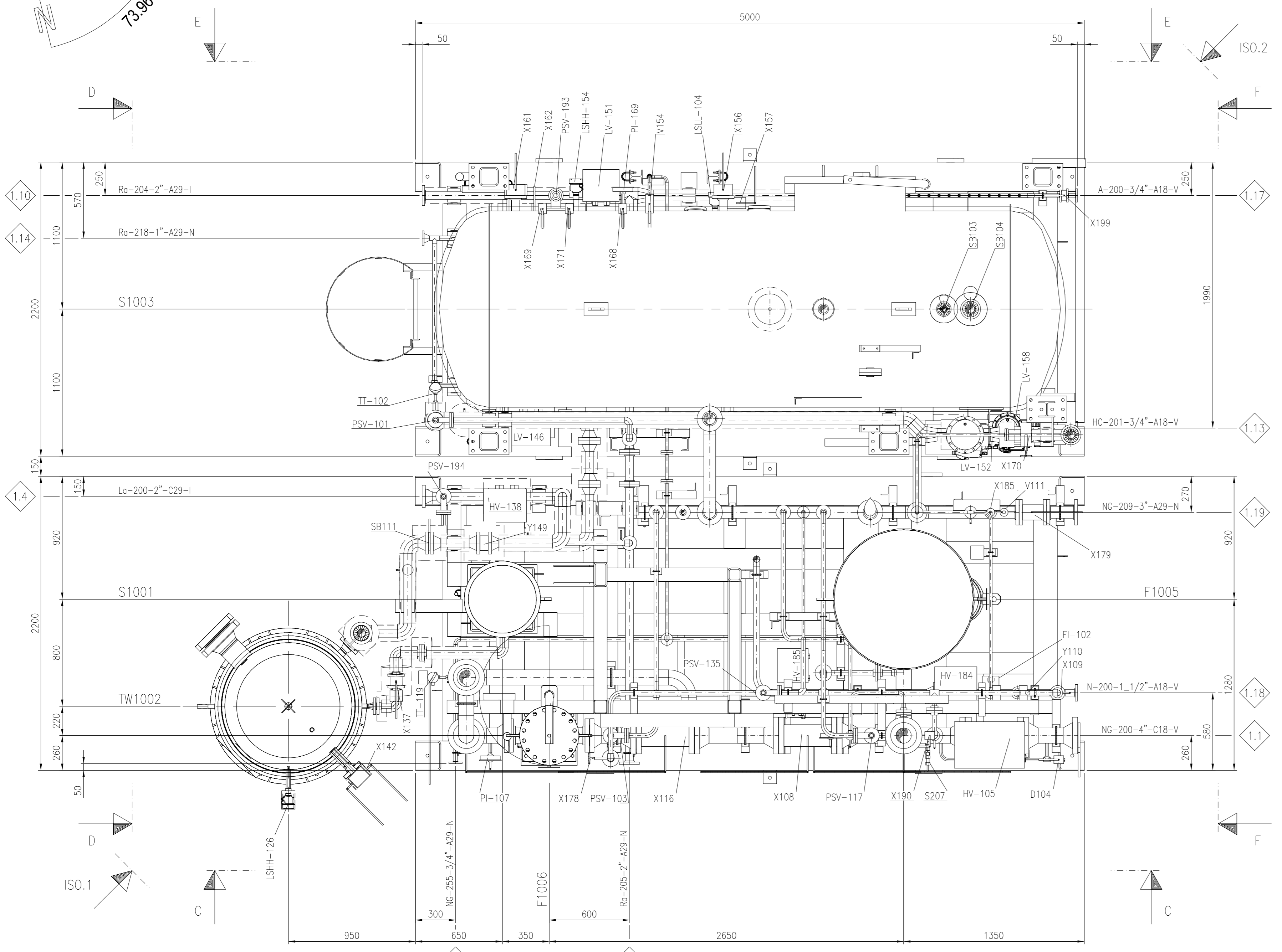
SECTION "B-B"



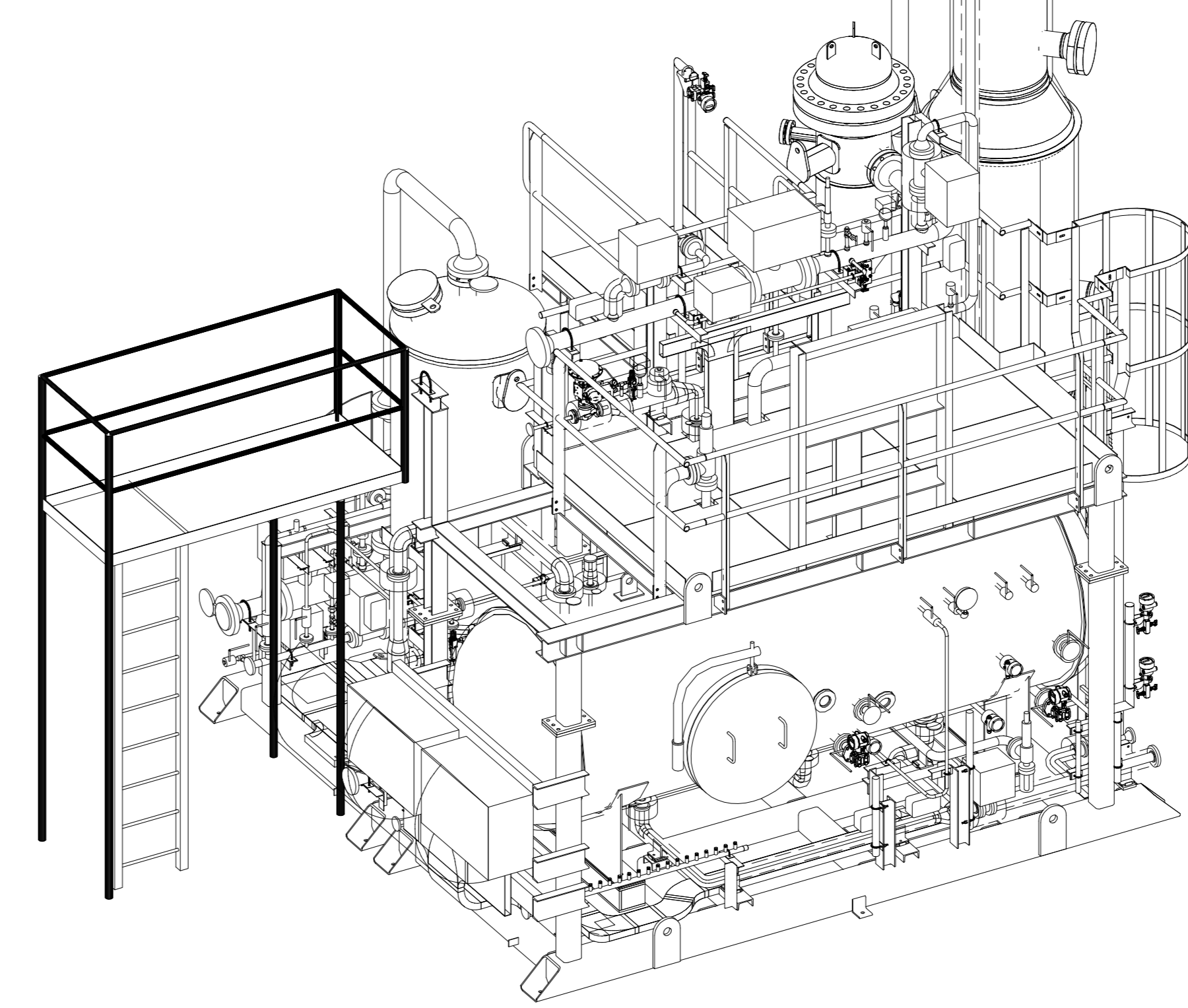
Anlagen - Nord



ISO.1



SECTION "A-A"



ISO.2

CONNECTION LIST			
	DESCRIPTION	LINE NUMBER	CONNECTION
1.1	RAW NATURAL GAS INLET	NG-200-4"-C18-V	FLG. #4" 600# R.F.
1.3	NATURAL GAS TO DRYER	NG-207-4"-C18-V	FLG. #4" 600# R.F.
1.4	LEAN AMINE INLET	La-200-2"-C29-I	FLG. #2" 600# R.F.
1.6	AMINE FLASH	NG-210-1/2"-A29-N	FLG. #1/2" 150# R.F.
1.7	TO AMINE BLOWDOWN VESSEL	Ro-205-1"-A29-N	FLG. #2" 150# R.F.
1.10	RICH AMINE FROM FLASH VESSEL	Ro-204-2"-A29-I	FLG. #2" 150# R.F.
1.11	CONDENSATE FROM PRECOOLER	CD-200-1/2"-A29-I	FLG. #1/2" 150# R.F.
1.13	LIQUID HYDROCARBON DISCHARGE	HC-201-3/4"-A18-V	FLG. #3/4" 150# R.F.
1.14	AMINE DISCHARGE	Ro-218-1"-A29-N	FLG. #1" 150# R.F.
1.17	INSTRUMENT AIR	A-200-3/4"-A18-V	FLG. #3/4" 150# R.F.
1.18	NITROGEN INLET	N-200-1,1/2"-A18-V	FLG. #1,1/2" 150# R.F.
1.19	TO COLD FLARE	NG-209-3"-A29-N	FLG. #3" 150# R.F.
1.20	TO HOT FLARE	NG-255-3/4"-A29-N	FLG. #3/4" 150# R.F.

NOTE

- ALL DIMENSIONS ARE IN MILLIMETERS
- T.O.G. = TOP OF GROUT - T.O.C. = TOP OF CONCRETE - T.O.S. = TOP OF STEEL

REF. DOCUMENTS

- FOUNDATION LAYOUT WHIT LOADS AND TRENCHES SEE DWG. ....

<p>Proj.-Nr. <b>DG-001115</b></p> <p>Standort/Projektname <b>LANG LIQUEFACTION PLANT</b></p>	<p><b>TPI</b> TRIO PROJECT INTEGRITY</p> <p><b>bioplusLNG</b></p> <p><b>OGÉ</b></p>	<p>Zustimmungen</p> <p><b>CO2 ABSORPTION UNIT - ASSEMBLY DRAWING</b></p> <p><b>CO2-ABSORPTIONSANLAGE - MONTAGEZEICHNUNG</b></p> <p>F:Tech. Standartnummer A:Art. A:Rev. A:Zeit. D:Zeit. L:Rev. M:Zeit. A:Z</p> <p>verwert. ISO 15026 bezeichnen <b>A0 120</b></p> <p>Projektnummer OGE <b>520 REZH 598 002 004 PLY 001 01+ 0B</b></p> <p>Uhrp: 2220688-0-00-001 / EST105735</p>
--	---	---