


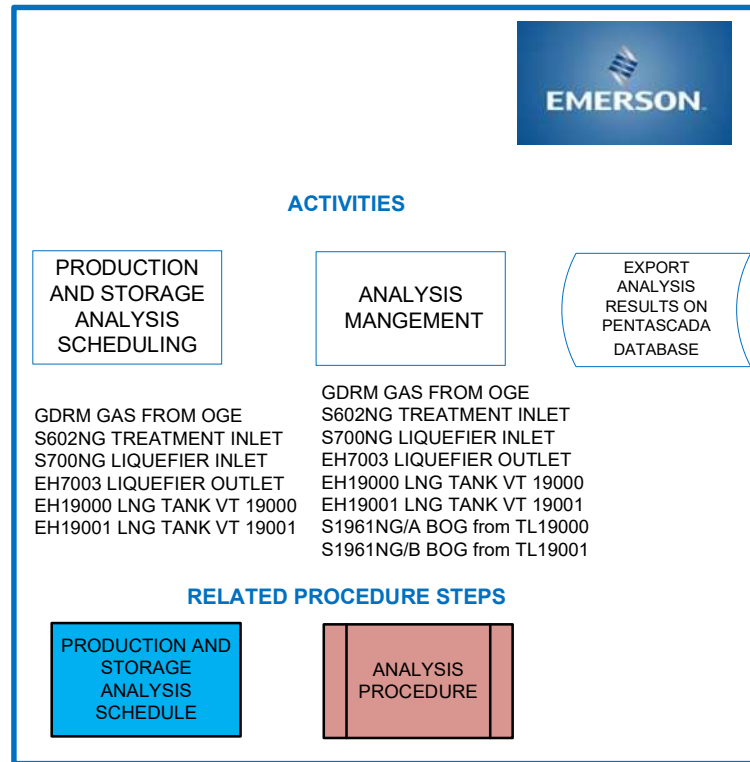
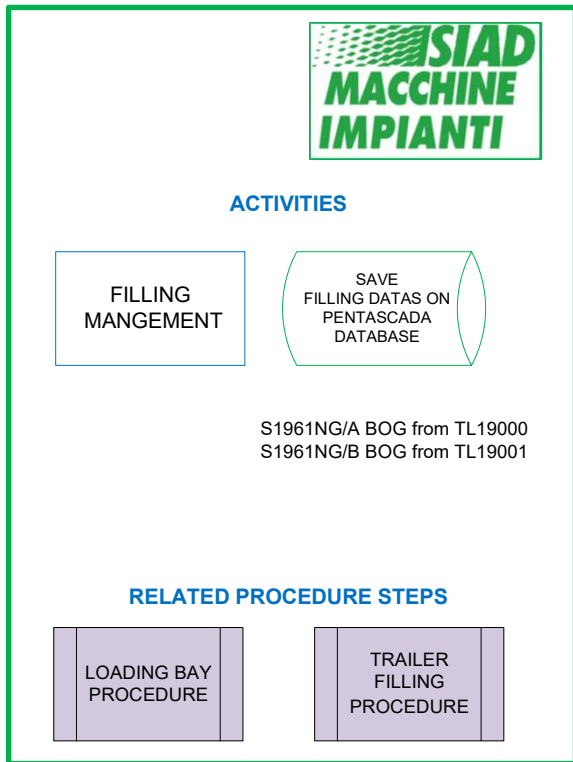


Fachtechnik **ANALYZER/TRUCK LOADING MANAGEMENT**
Anlage **646 001**
Teilanlage **035**

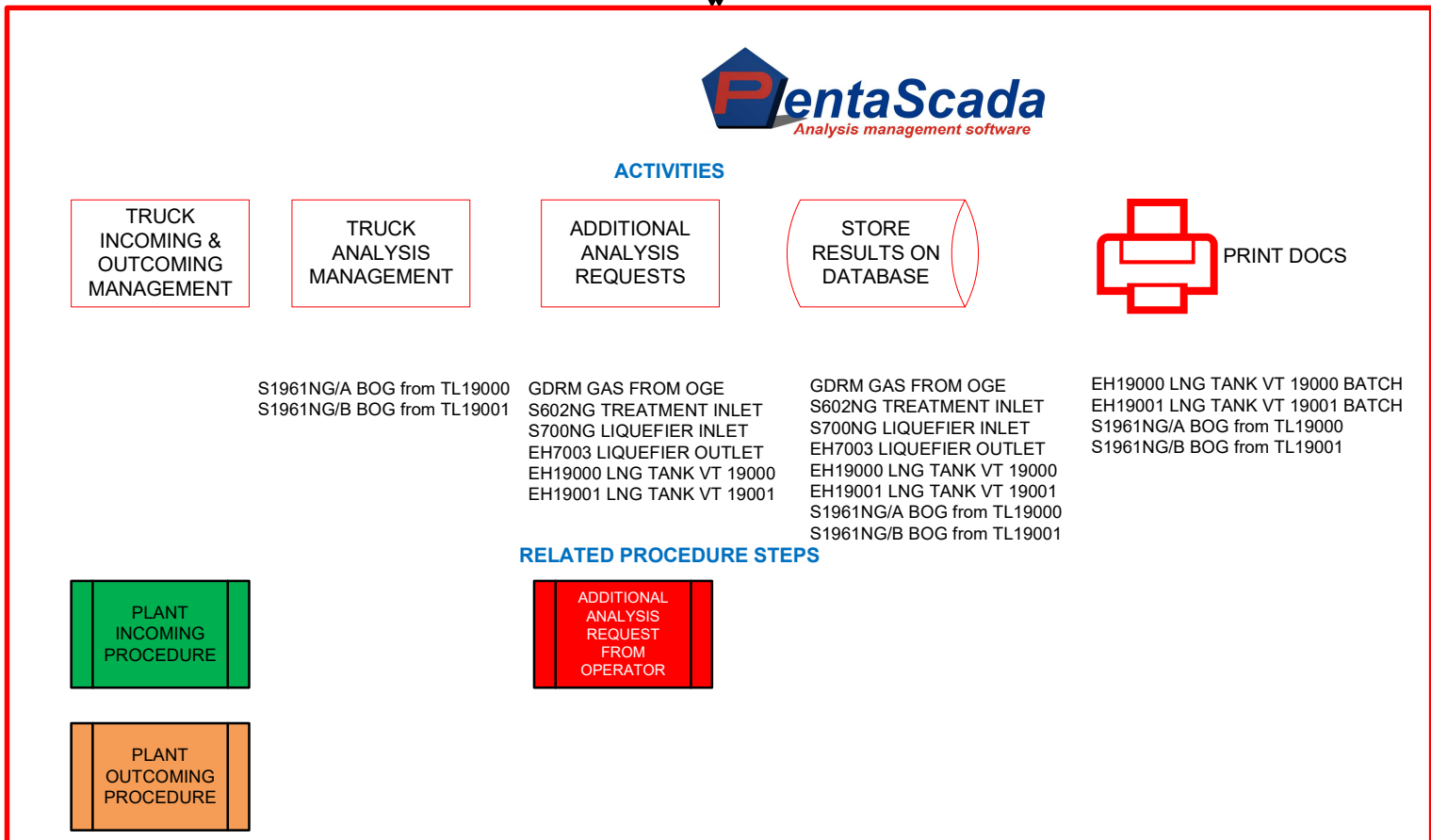
Lieferant PENTATEC
 Titel TRUCK LOADING MANAGEMENT - FLOW CHART FOR
 PRELIMINARY OPERATION
 LKW-LADUNGSMANAGEMENT - FLUSSDIAGRAMM FÜR DEN
 VORBEREITUNGSBETRIEB
 Bestell.-Nr. 4510272370

03					Proj.-Nr. DG-001115									
02					Renzenhof									
01	ISSUE	15.02.2024	P.A.		Dokumentenbenennung									
Nr.	Änderung	Datum	Name		 TRUCK LOADING MANAGEMENT - FLOW CHART FOR PRELIMINARY OPERATION LKW-LADUNGSMANAGEMENT - FLUSSDIAGRAMM FÜR DEN VORBEREITUNGSBETRIEB									
	Datum		Name											
Erst.	16.01.2024	P.A.												
Gepr.	16.01.2024	S.F.												
Freig.	16.01.2024	L.G.												
Schutzvermerk ISO 16016 beachten		Maßstab 1/			F-Tech.	Standortkurzname	A-Art	Anl-Nr.	Anl-Teil	D-Art	Lfd-Nr.	Blatt	Änd.	
		/			520	REZH	646	001	035	SPR	001	01+	0B	
Ursprung: EST115443 Rev.0B					Ers. f.:					Ers. d.				



COMMUNICATION PROTOCOL TO BE DEFINED

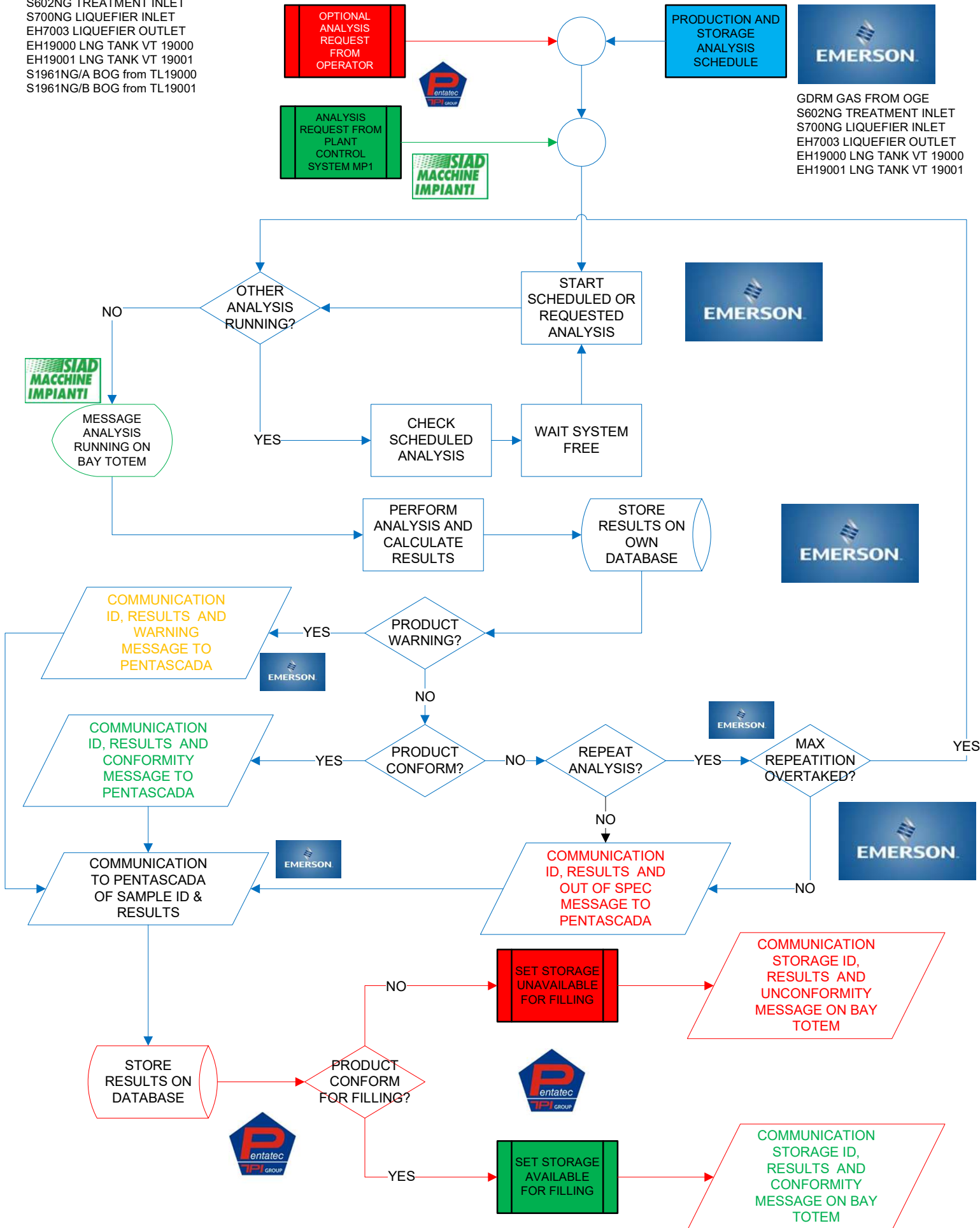
COMMUNICATION PROTOCOL TO BE DEFINED



GDRM GAS FROM OGE
 S602NG TREATMENT INLET
 S700NG LIQUEFIER INLET
 EH7003 LIQUEFIER OUTLET
 EH19000 LNG TANK VT 19000
 EH19001 LNG TANK VT 19001
 S1961NG/A BOG from TL19000
 S1961NG/B BOG from TL19001



GDRM GAS FROM OGE
 S602NG TREATMENT INLET
 S700NG LIQUEFIER INLET
 EH7003 LIQUEFIER OUTLET
 EH19000 LNG TANK VT 19000
 EH19001 LNG TANK VT 19001



TOTEM NEAR PLANT ENTRANCE

INCOMING PROCEDURE CLOSED/ABORTED

FROM PAGE 4, 5 OR 6



PLANT INCOMING PROCEDURE

WAITING FOR LNG TRAILER IDENTIFICATION

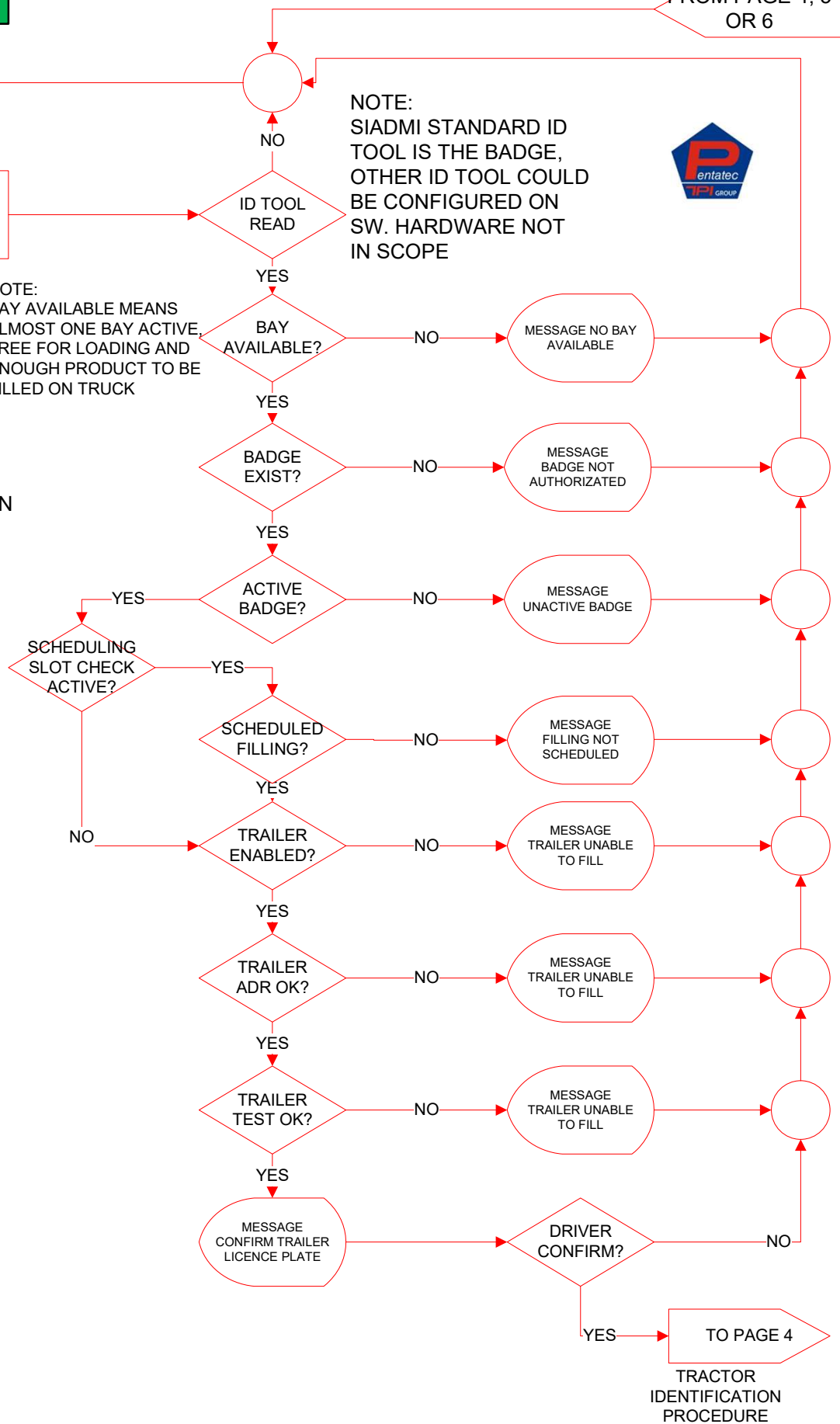
NOTE:
SIADMI STANDARD ID TOOL IS THE BADGE, OTHER ID TOOL COULD BE CONFIGURED ON SW. HARDWARE NOT IN SCOPE



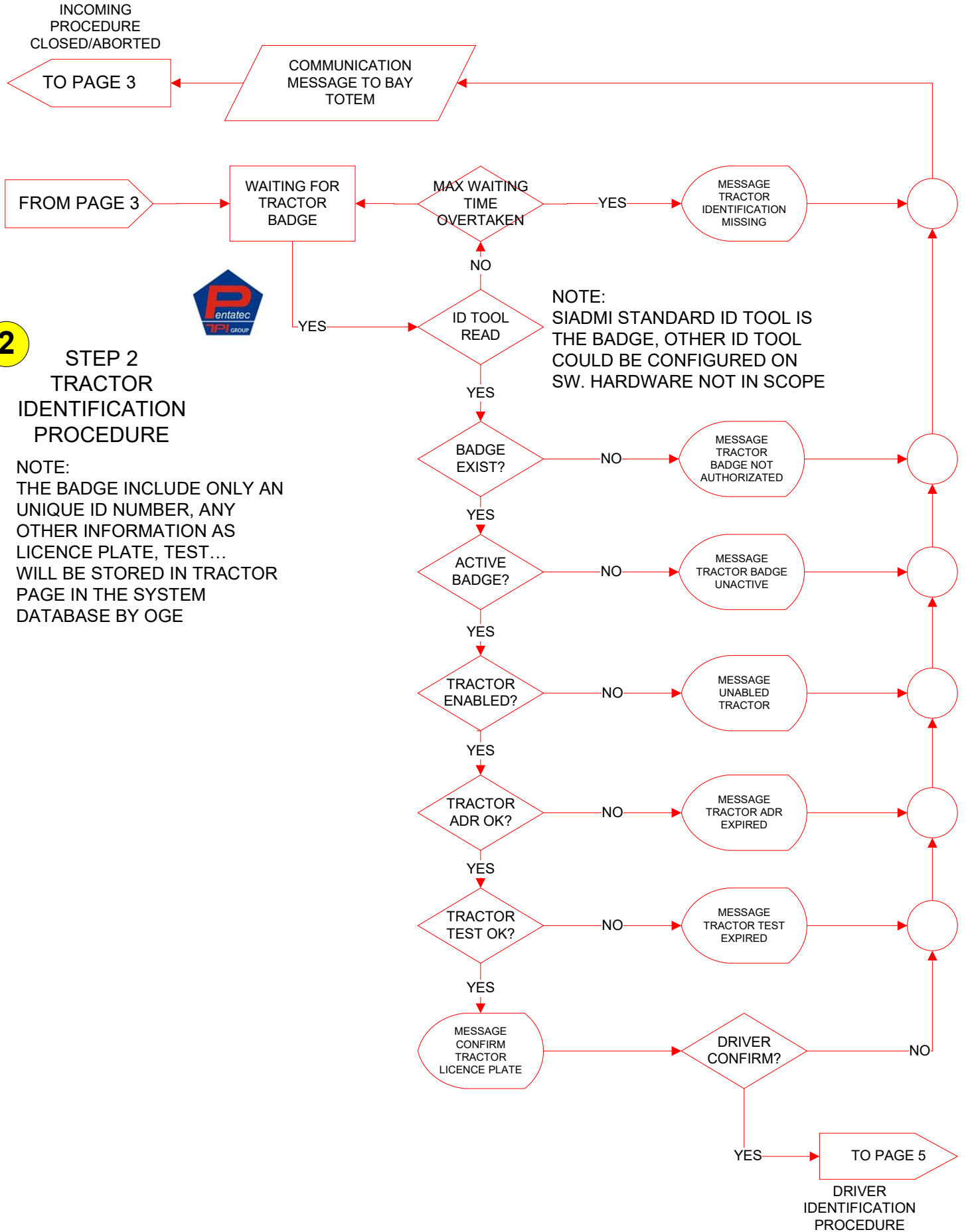
1 STEP 1 TRAILER IDENTIFICATION PROCEDURE

NOTE:
THE BADGE INCLUDE ONLY AN UNIQUE ID NUMBER, ANY OTHER INFORMATION AS LICENCE PLATE, ADR, TEST WILL BE STORED IN TRAILER PAGE IN THE SYSTEM DATABASE BY OGE

NOTE:
BAY AVAILABLE MEANS ALMOST ONE BAY ACTIVE, FREE FOR LOADING AND ENOUGH PRODUCT TO BE FILLED ON TRUCK



TOTEM NEAR PLANT ENTRANCE



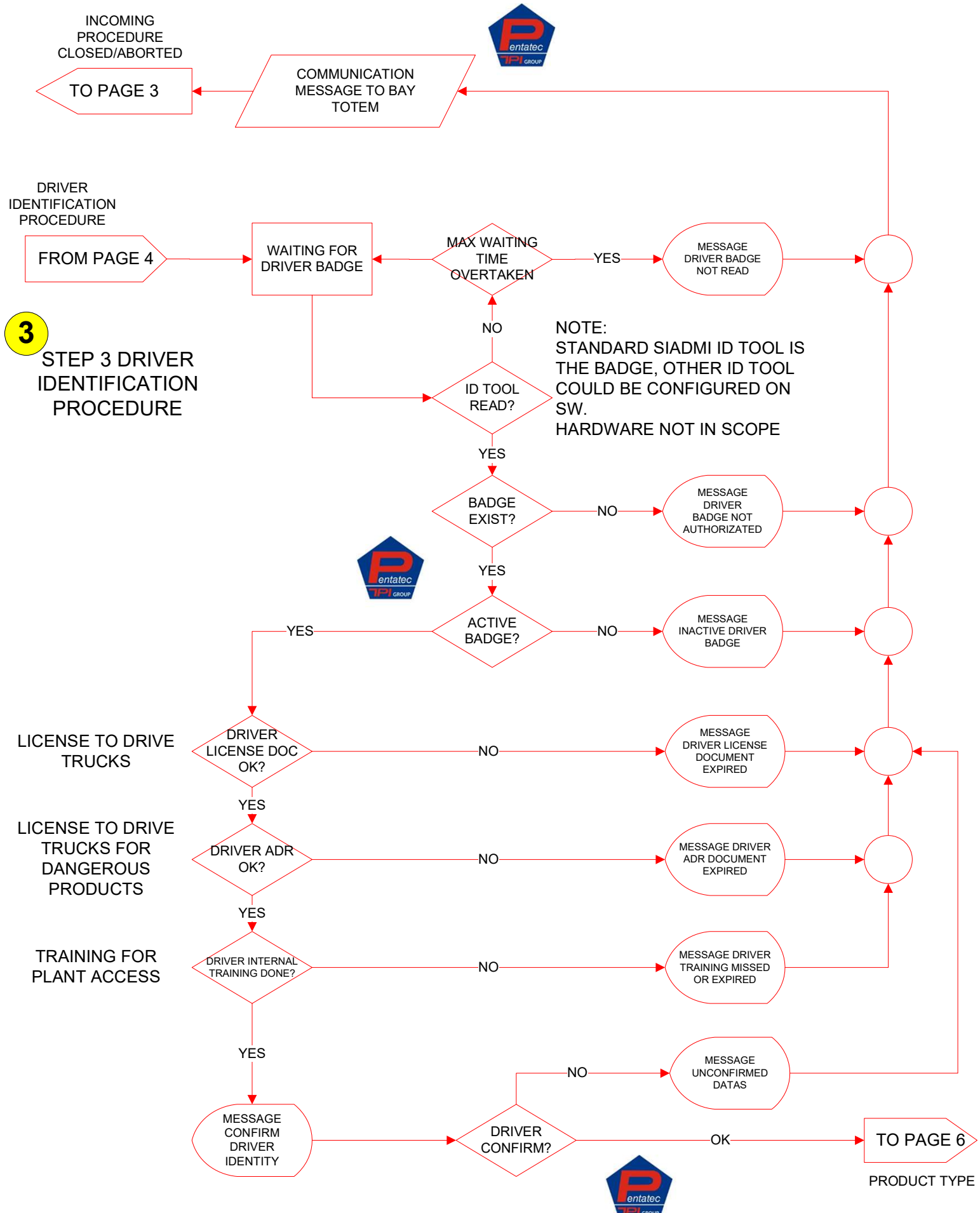
2

**STEP 2
TRACTOR
IDENTIFICATION
PROCEDURE**

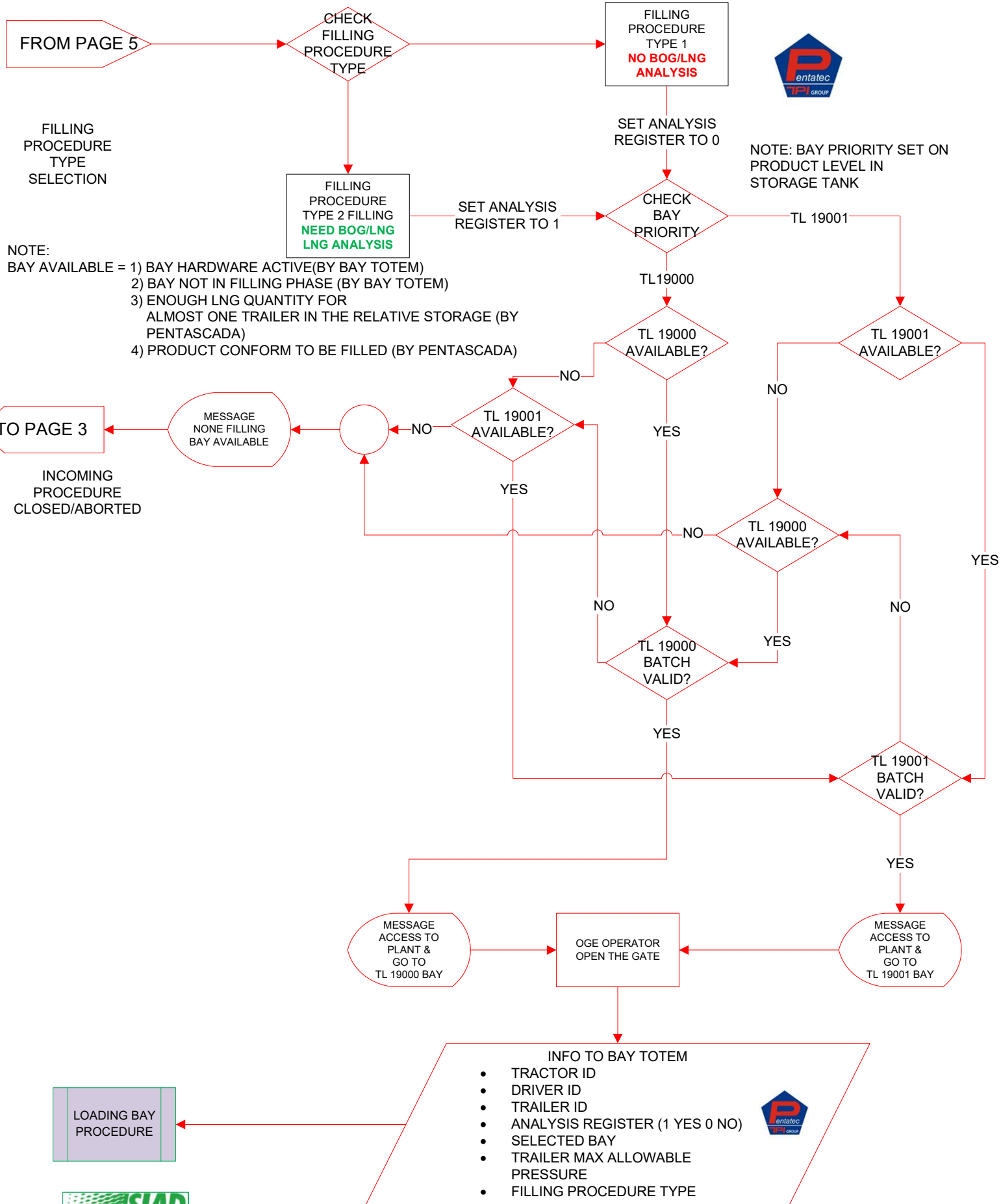
NOTE:
THE BADGE INCLUDE ONLY AN
UNIQUE ID NUMBER, ANY
OTHER INFORMATION AS
LICENCE PLATE, TEST...
WILL BE STORED IN TRACTOR
PAGE IN THE SYSTEM
DATABASE BY OGE

NOTE:
SIADMI STANDARD ID TOOL IS
THE BADGE, OTHER ID TOOL
COULD BE CONFIGURED ON
SW. HARDWARE NOT IN SCOPE

TOTEM NEAR PLANT ENTRANCE



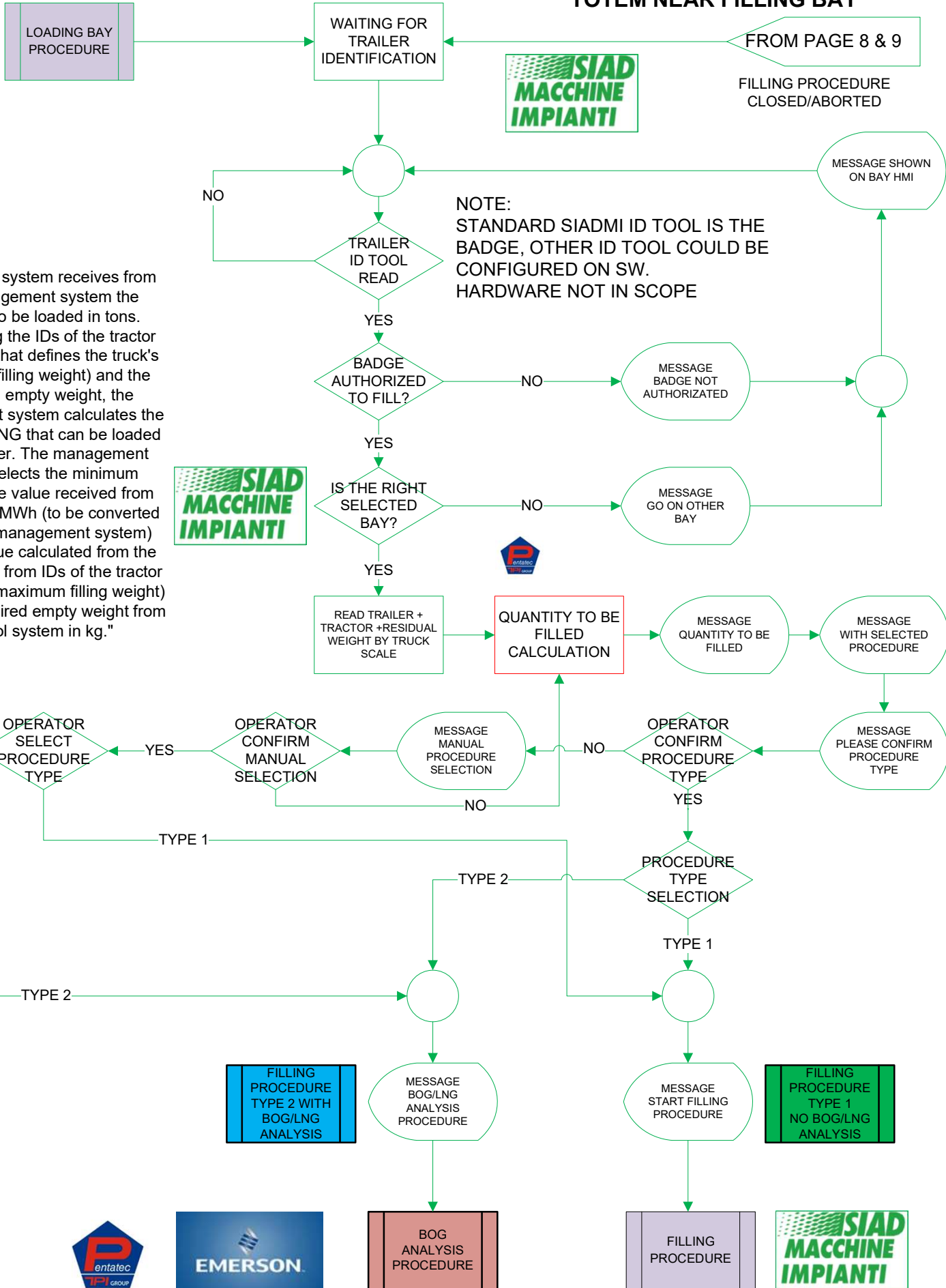
TOTEM NEAR PLANT ENTRANCE



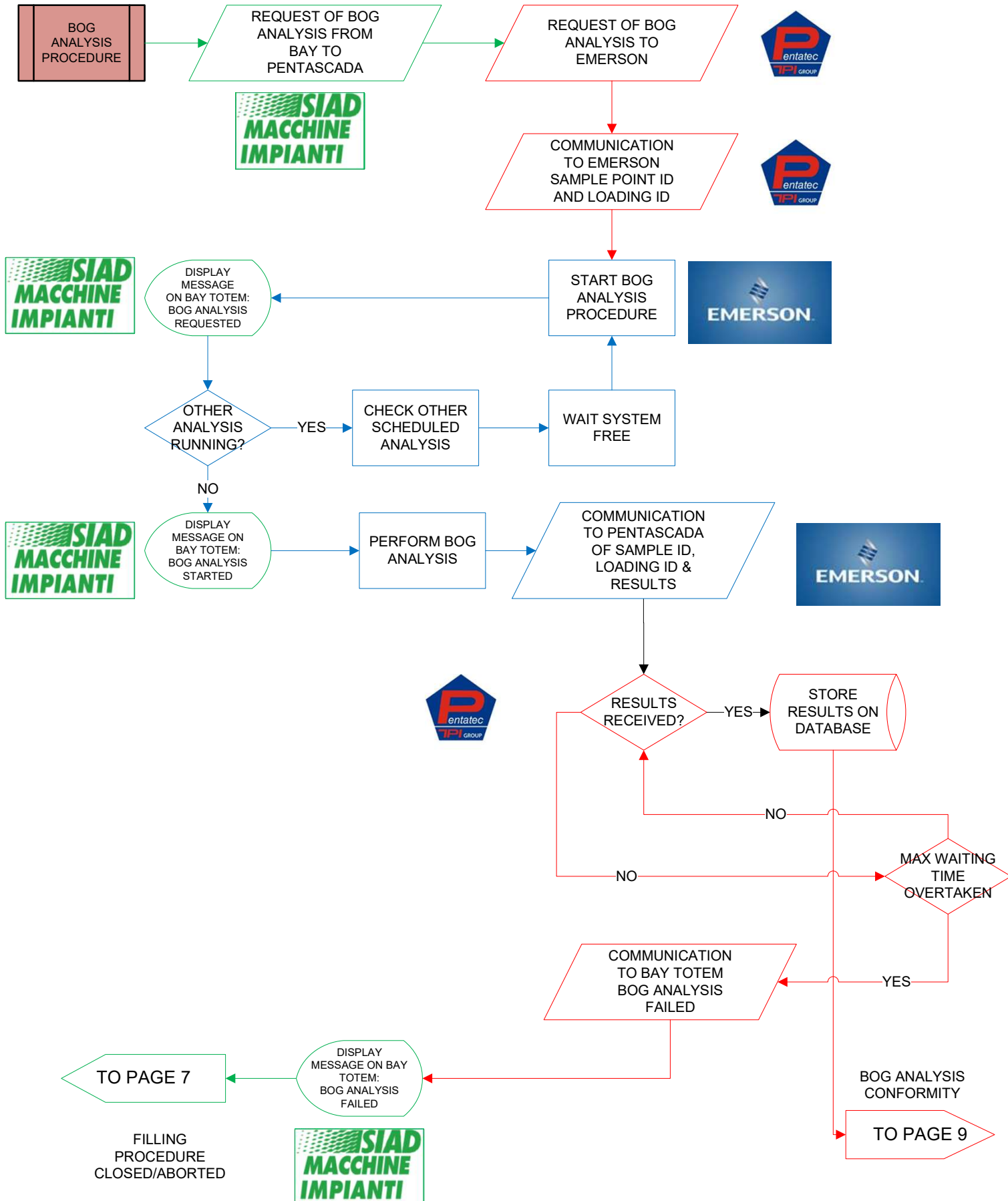
NOTE:
BAY AVAILABLE = 1) BAY HARDWARE ACTIVE(BY BAY TOTEM)
2) BAY NOT IN FILLING PHASE (BY BAY TOTEM)
3) ENOUGH LNG QUANTITY FOR ALMOST ONE TRAILER IN THE RELATIVE STORAGE (BY PENTASCADA)
4) PRODUCT CONFORM TO BE FILLED (BY PENTASCADA)

NOTE: BAY PRIORITY SET ON PRODUCT LEVEL IN STORAGE TANK

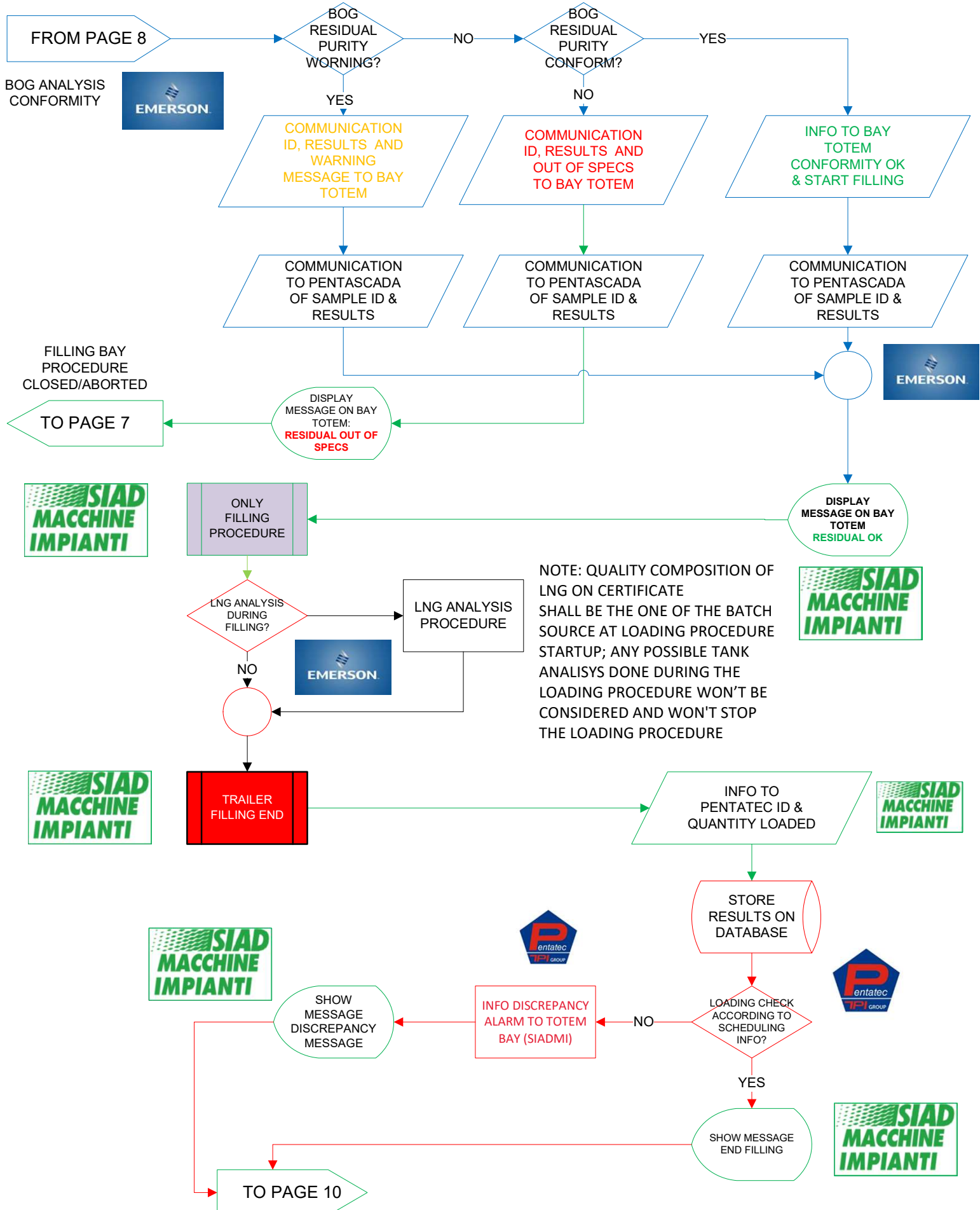
TOTEM NEAR FILLING BAY



TOTEM NEAR FILLING BAY

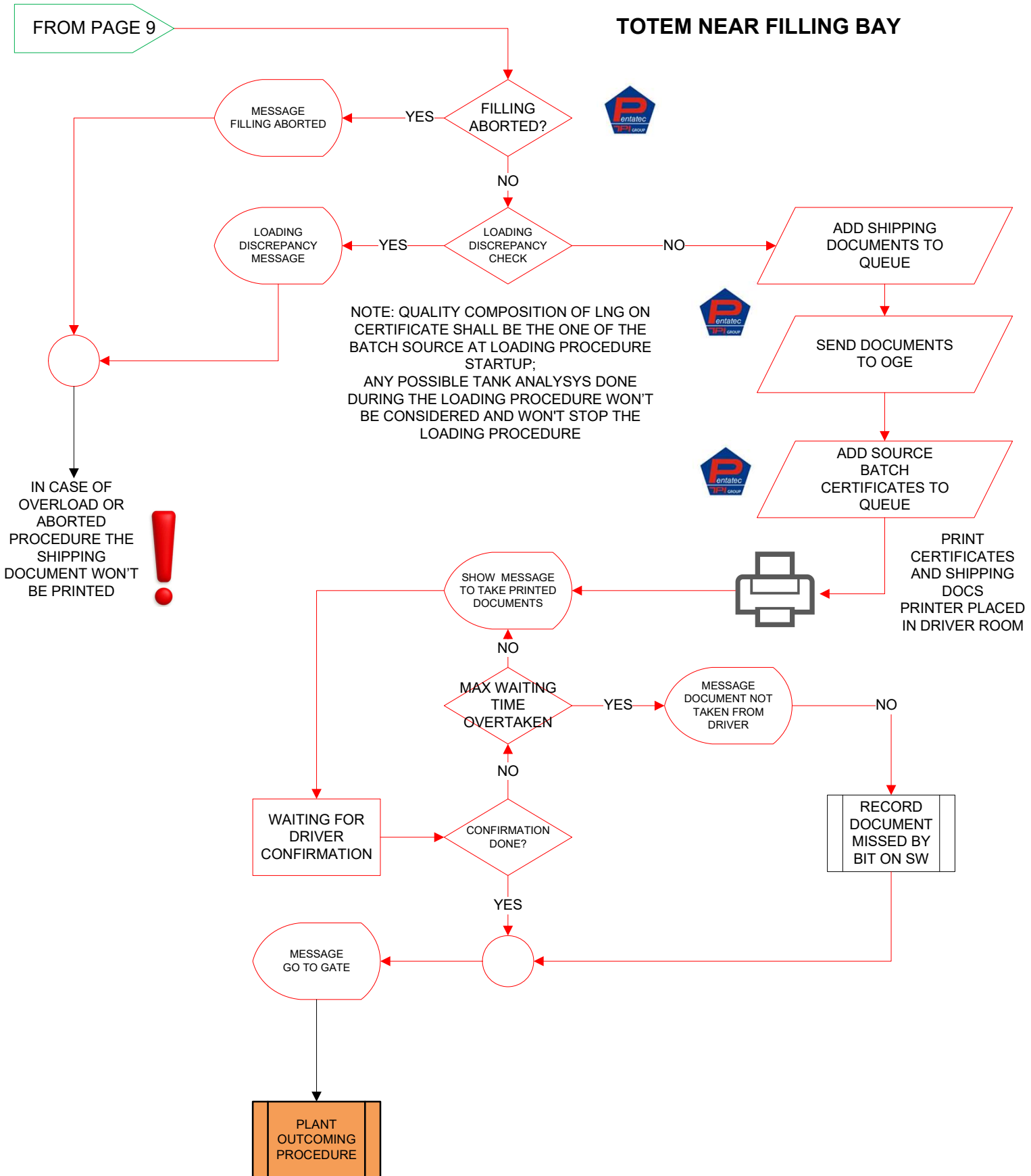


TOTEM NEAR FILLING BAY



NOTE: QUALITY COMPOSITION OF LNG ON CERTIFICATE SHALL BE THE ONE OF THE BATCH SOURCE AT LOADING PROCEDURE STARTUP; ANY POSSIBLE TANK ANALYSIS DONE DURING THE LOADING PROCEDURE WON'T BE CONSIDERED AND WON'T STOP THE LOADING PROCEDURE

TOTEM NEAR FILLING BAY



**PLANT
OUTCOMING
PROCEDURE**

NOTE:
SIADMI STANDARD ID TOOL
IS THE BADGE, OTHER ID
TOOL COULD BE
CONFIGURED ON SW.
HARDWARE NOT IN SCOPE

WAITING FOR
DRIVER
IDENTIFICATION
TOOL

MAX WAITING
TIME
OVERTAKEN

YES

NO

ID TOOL
READ?

YES

SEND ALARM TO
OGE DRIVER DIDN'T
LEAVE PLANT



TOTEM NEAR PLANT ENTRANCE

CHECK RECORD BIT ON DB
DOCUMENT MISSED

NO

SHOW MESSAGE
TO TAKE PRINTED
DOCUMENTS

NO

YES

ASK
CONFIRMATION
TO DRIVER

YES

CLEAR
RECORD
DOCUMENT
MISSED BY
BIT ON SW

YES

CLOSE
PROCEDURE
AND FREE BAY

MESSAGE
BYE