

NEW DRAWING with customisation

Mounting situation, waste water connection, cable routing, crane arrangement

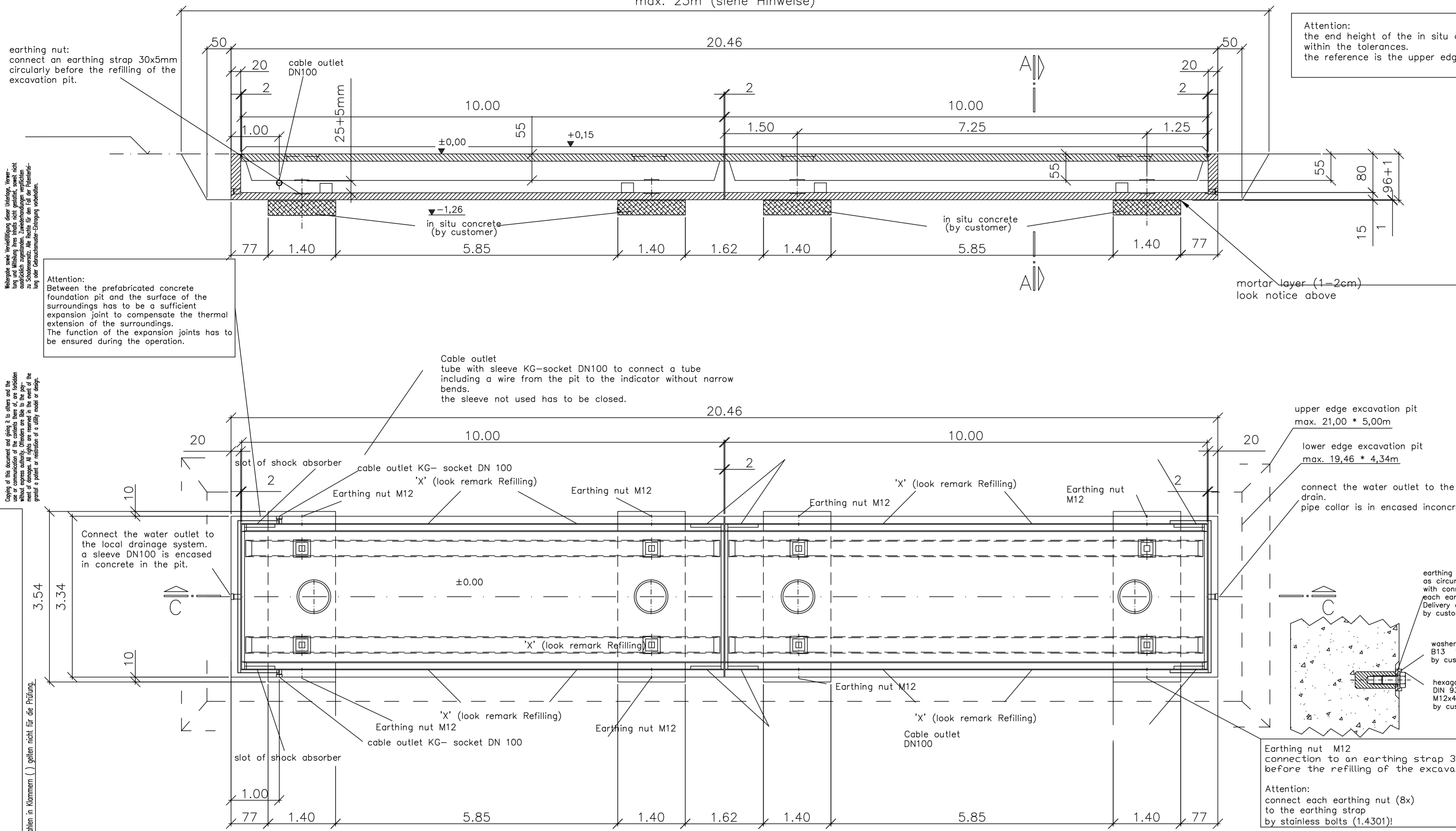
Attention:
the upper edge of the excavation pit must have the dimensions:
Length: 23,00m
width: 5,50m
different dimensions (caused of kind of soil or more excavation)
require cranes with higher capacity and are not included in our
assembly at fixed price.
the costs for bigger cranes are brought to account on time basis.

**At the day the foundation pit is delivered before
beginning of the assembly a earth-moist mortar
has to be available specifications:
amount: 550 l,
grain size 0...4mm for joints up to 50mm,
class of consistency F1 DIN 206**

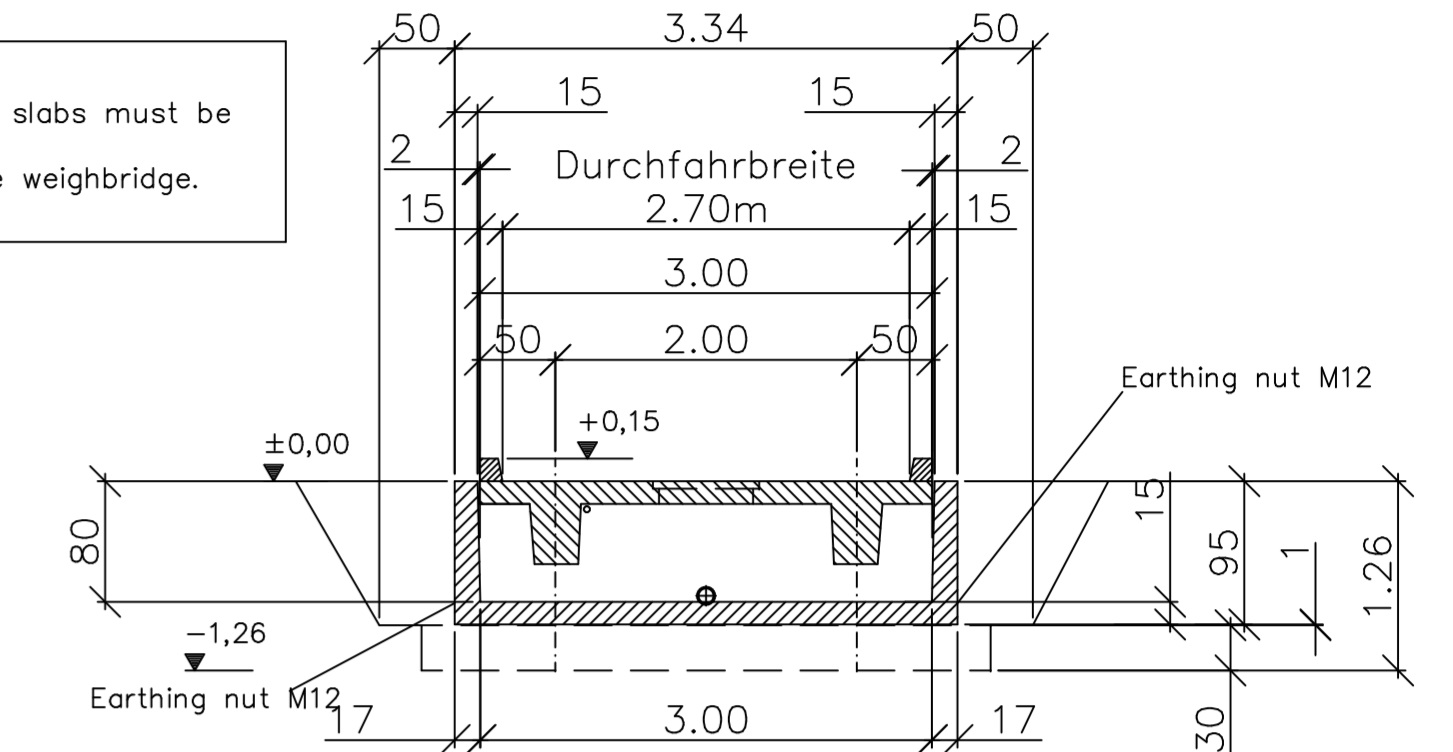
Section C - C

Excavation on the outside and between
the bearing strips 1-2cm deep run

max. 23m (siehe Hinweise)



Section A - A



Truck scale with bridge according to DIN 8119
scale bridge class 60 according to DIN 8119

The area around the horizontally installed weighbridge is even to the upper edge of the weighbridge and gets a pavement usual for roads and sites for heavy trucks.

The foundation pit is to be executed on a solid and good soil without settlement!
The soil must be cohesive with a stiff consistency acc. to DIN 1054 allowing a soil pressure of $P_{max} = 200 \text{ kN/qm}$, which is to be rechecked responsibly by the local manager of works after the excavation of the pit.

Signposting:
at the approaches to the scale in both directions must be a sign scale bridge class 60 according to DIN 8119 and maximum speed 25 km/h

Attention:
Misuse must be excluded by means of appropriate measures.

the approach and descent of the truck weigh bridge must be at least 1,5m long, horizontal, straight and strengthened

Filling of the pit acc. to DIN 18300 (Earthworks)
- The filling of the pit is to be executed carefully with noncohesive soil.
- The static circumstances of the foundation are to be considered. (Dimensioning acc. to DIN 8119)
- The soil is to be filled in layers of max. 30cm and to be compressed with light devices.

Attention:
wedge delivered and mounted by Pfister during concrete installation. check before the refilling of the pit the locking of the weighbridge by a wedge between bridge and pit wall at all points marked with an 'X'.

Attention to antifreeze protection (especially at cohesive soils) !

all dimensions in M and CM

weighbridge=concrete quality C45/55	precast concr.: C45/55	in situ concrete: C20/25	concrete steel: BST IV	steel: S 235 JR
-------------------------------------	------------------------	--------------------------	------------------------	-----------------

Exposition class above and on the side: XC4, XD3, XS3, XF4, XF4, XM1
concrete cover: $c = 4,5\text{cm}$

Exposition class below: XC3, XF1
concrete cover: $c = 2,5\text{cm}$

pit = concrete quality C45/55
Exposition class above and inside: XC4, XD3, XS3, XF4, XF4, XM1
concrete cover: $c = 4,5\text{cm}$

Exposition class outside: XC3, XF1
concrete cover: $c = 2,5\text{cm}$

foundations=concrete quality C25/30
Exposition class all sides: XC2, XF1
concrete cover: $c = 3,0\text{cm}$

Order Number: L2300082
Purchaser: Open Grid Europe (Germany)
im Gewerbegebiet Röthenbachtal
Address: 90552 Röthenbach a.d. Pegnitz
Site: Röthenbachtal 1
Release: 07.06.2023

Disp.	Sach-Nr.	Benennung	Abmessungen, DIN-Nr., Werkstoff
		Algemeintoleranzen	
		Schweißkonstruktion	
		Spannung u. spannlöse Bearbeitung	
		2023 Datum	
		2023 Datum	
		Gepr. 14.06.	
		Abt. WTM	

Unterlagen-Nr.	Blatt 1
100.794.25.20 P	GB
Ordn.-Nr.	Fremdspr.
Ers. für:	Ers. durch:

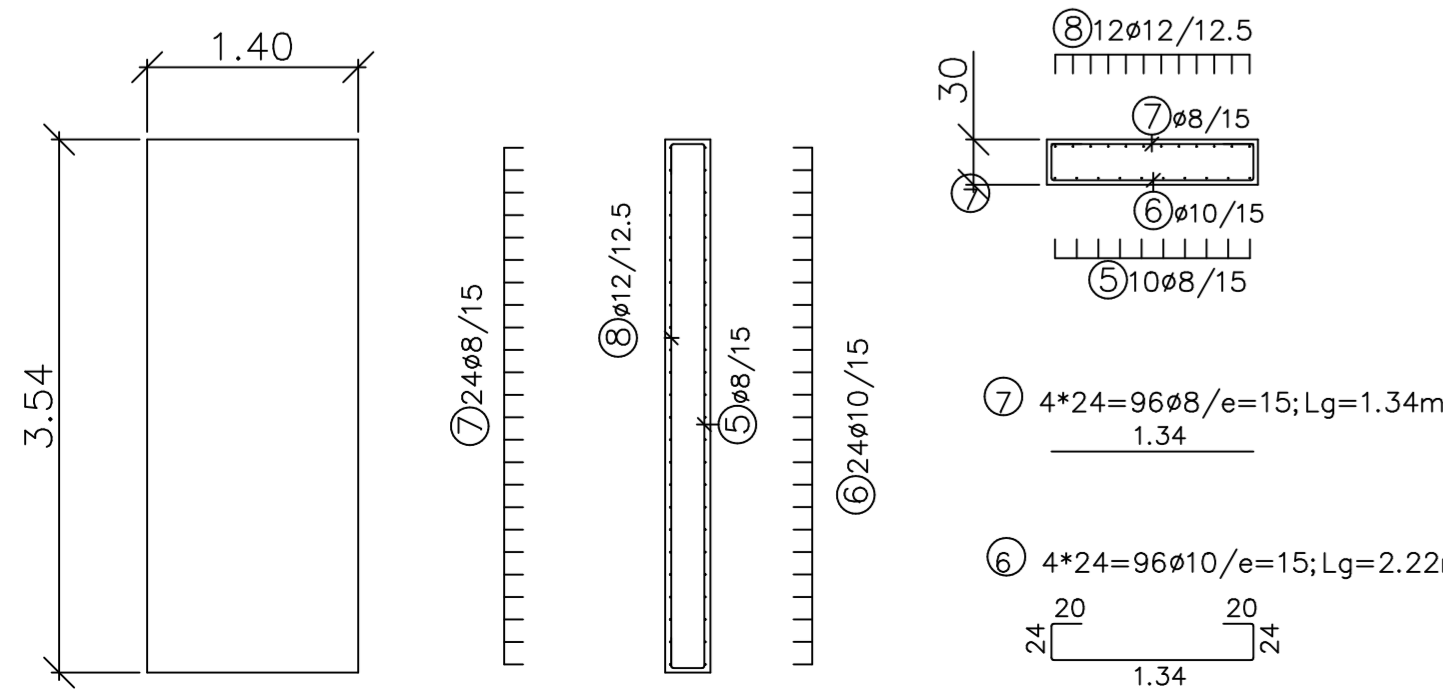
Concrete - Endfoundation in C25/30; 4*

foundation = concrete quality C25/30
exposure classes all-around:
XC2, XF1
concrete cover: $c = 3,0\text{cm}$

BSt IV (BSt 500 S)

Item	Q'ty	Ø	Length	Remark:
5	40	8	4.32	
6	96	10	2.22	
7	96	8	1.34	
8	48	12	3.46	

Gesamtgewicht 400 kg



Installation situation
in Röthenbach

messurement
cable outlet

bypass-lane

Backfilling the
excavatio pit
with lean concrete
on the entire
longitudinal side

Die Maße werden vom Besteller (Empfänger) besonders beachtet. Maßzahlen in Klammern () gelten nicht für die Prüfung.

Wichtige Maß- und Fertigungs- oder Montagehinweise:
Vor Montage des Waagens muss die Fundament- und Weighbridge-Fläche
ausreichend verfestigt sein. Die Fundament- und Weighbridge-Fläche
muss vor Montage des Waagens mit einem geeigneten Material
ausgefüllt sein. Die Fundament- und Weighbridge-Fläche
muss vor Montage des Waagens mit einem geeigneten Material
ausgefüllt sein.

Quality of the concrete used must be checked before
using and filling the area must be checked, and the
surface must be checked. The concrete must be
filled with a suitable material before the
weighbridge is mounted.