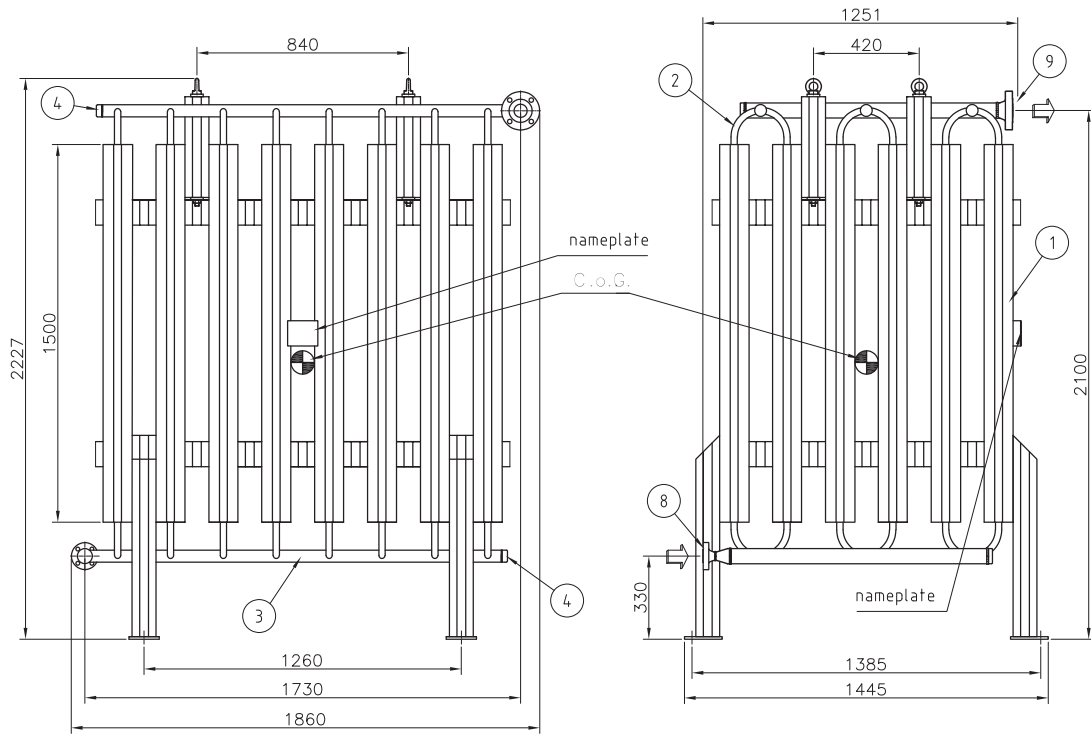


Rev.	Data/Date	Descrizione/Description	Dis/Dwr	Contr/Ckd	Appr/Apr
0	26/06/2023	First emission	Cardia M.	Arseni P.	Roveta M.
2	31/07/2023	Revision following comments	Cardia M.	Arseni P.	Roveta M.
3	26/09/2023	Revision	Cardia M.	Arseni P.	Roveta M.



**Criotec** Chivasso (TO) - ITALY  
www.criotec.com  
CRYOGENIC AND HIGH VACUUM TECHNOLOGIES

**CE** TÜV 0948

AUSRÜSTUNGSTYP / EQUIPMENT TYPE: E19000 (VMP72BV)

MONAT/JAHR / MONTH/YEAR: MATR. NO. / SERIAL NUM: 23097

FLÜSSIGKEIT / FLUID: LNG PED Gr. 1 SCOPE OUTPUT Nm³/h: 500

AUSLEGUNGSDRUCK (PS) / PRESSURE DESIGN: barg: 16

PRÜFDRUCK (PT) / TEST PRESSURE: barg: 22.9

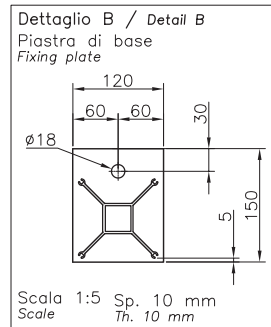
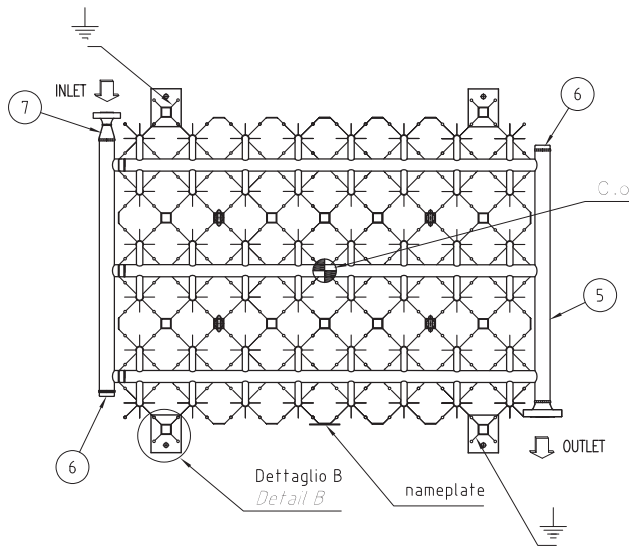
AUSLEGUNGSTEMPERATUR (TS) / TEMPERATURE DESIGN: °C: -196/+65

VOLUME / VOLUME it.: 40 TARA / TARE MASS: 300 PSV Satz / PSV SET: /

**TOLLERANZE / Tolerances**  
DOVE NON DIVERSAMENTE INDICATO / Unless otherwise specified  
- LA TOLLERANZA SULLE DIMENSIONI ANGOLARI E' ± 2° (RILEVABILI TRAMITE MISURA DELLE COORDINATE LINEARI)  
- The angular tolerance is ± 2° (measurable by means linear coordinates)  
- LA TOLLERANZA SULLE DIMENSIONI LINEARI E' ± 3mm PER METRO CON MASSIMO DI ± 25mm  
- The linear tolerance is ± 3mm per meter up to ± 25mm maximum

DATI DI PROGETTO - DESIGN DATA	
CORPO PRINCIPALE / Main body	
Pressione di progetto Ps / Design pressure	[barg] 16
Pressione di esercizio / Operating pressure	[barg] 0.5
Pressione di prova idraulica / Hydraulic test pressure	[barg] 22.9
Temperatura di progetto / Design temperature	[°C] -196/+65
Temperatura di esercizio / Operating temperature	[°C] -166.5
Fluido - fluid	NG
Stato fisico - physic state	gas
Perdite di carico / Pressure drop	[mbar] <50
Capacità massima / Volume	[dm³] 40
Peso a vuoto / Empty weight	[kg] 300
NORME / CODE	EN13445 + PED 2014/68/EU
CATEGORIA GIUNTI SALDATI / WELDING JOINT EFFICIENCY	3
ENTE ISPETTORE / NOTIFIED BODY	TÜV0948
CLASSE APPARECCHIO / CLASS OF EQUIPMENT	III
SPECIFICA DI SALDATURA / WELDING SPECIFICATION	N°MATICOLA / SERIAL NUMBER: 23097
CE MARKING ACCORDING TO PED: Required.	

- Notes:
- Flange holes straddling axes;
  - Foundation bolts not included in scope of supply;
  - Commissioning spare parts included in scope of supply;
  - No. 2 grounding for each item;
  - All dimensions in millimeters, unless otherwise indicated.



**Nozzles list**

Item	ND	Rating	Service
INLET	1"	#150 RF (*)	LIQUID FLUID INLET
OUTLET	2"	#150 RF (*)	GAS FLUID OUTLET

(\*) FLANGE COMPATIBLE WITH STANDARD ANSI 16.5

Ref.	Description	Q.ty	Material
9	Flange 2" #150 WN RF	1	EN AW 6082/6061 T6
8	Flange 1" #150 WN RF	1	EN AW 6082/6061 T6
7	Concentric reduction Ø60-1"	1	EN AW 6082 T6
6	Cap Ø60	2	EN AW 6082 T6
5	Tube Ø60x5 - 3 holes	2	EN AW 6060/6063 T4/T6
4	Cap Ø48	6	EN AW 6082 T6
3	Tube Ø48x3.5 - 8 holes on 2 axes	6	EN AW 6060/6063 T4/T6
2	Elbow	48	EN AW 5754 H111
1	Extruded finned pipe L=1500 mm	48	EN AW 6060/6063 T4

Bill of materials

Projektnummer OGE	Maßnahmenzeichnung OGE
-	-

SIAD MI Tag No.	E19000	<b>SIAD MACCHINE IMPIANTI S.P.A.</b>
SIAD MI Project No.	L43374	
SIAD MI Project Name	LNG 140 TPD	SIAD MI Dwg No.
TITOLO / Title: E19000 - VMP72BV		
IMPIANTO o ASSEMBLY / Plant or Assembly: LNG tank build-up vaporizer: VMP72BV	MATERIALE / Material: EN AW 6060/6063	QTA' / Qty: 1
PESO / Weight: 300kg		COMMESSA / Job: 5619
CLIENTE / Client: SIAD MI	DISegnATO / Drawn: Cardia M.	CONTRoLLATO / Checked: Arseni P.
APPROVATO / Approved: Roveta M.	DESIGNO N. / No drawing: M.5619-0001	REV. 3
DATA / Date: 28/09/2023	SCALA / Scale: 1:15	FOLIO / Sheet: 1 of 1
FORMATO / Format: A2		
Documento di proprietà CRIOTEC IMPIANTI S.p.A. La società tutelerà i propri diritti da esso derivati in sede civile e penale a termini di legge. This document is CRIOTEC IMPIANTI S.p.A.'s property. The company will protect its rights deriving from such property in civil and penal courts according to law.		
Rev. Nr.	Datum	Beschreibung
		erstellt
		geprüft
		freigegeben
		Datum
		freigegeben
Projekt-Nr.: DG-001115		Standort / Projectname: LNG LIQUEFACTION PLANT
		Zeichnungsbenennung: LNG (TANK) BUILD UP VAPORIZER E19000 - ASSEMBLY DRAWING
		LNG (TANK) AUFBAUVERDAMPFER E19000 - MONTAGEZEICHNUNG
Datum: 31.07.2023	Name: Cardia M.	F-Tech: 520
Disp.: 31.07.2023	Arseni P.	Standortszname: REZH
Freigez.: 31.07.2023	Roveta M.	A-Art: 646
Schutzvermerk: ISO 15016 beschriftet	Blattnr.: A2	ArtNr.: 001
Maßst.: 1:15		A-Teil: 037
		D-Art: ZEN
		Lfd-Nr: 001
		Blatt: 01-
		Änd: 0B
Ürspr.: EST106181 Rev. 0B	Ers.f.:	Ers.d.: