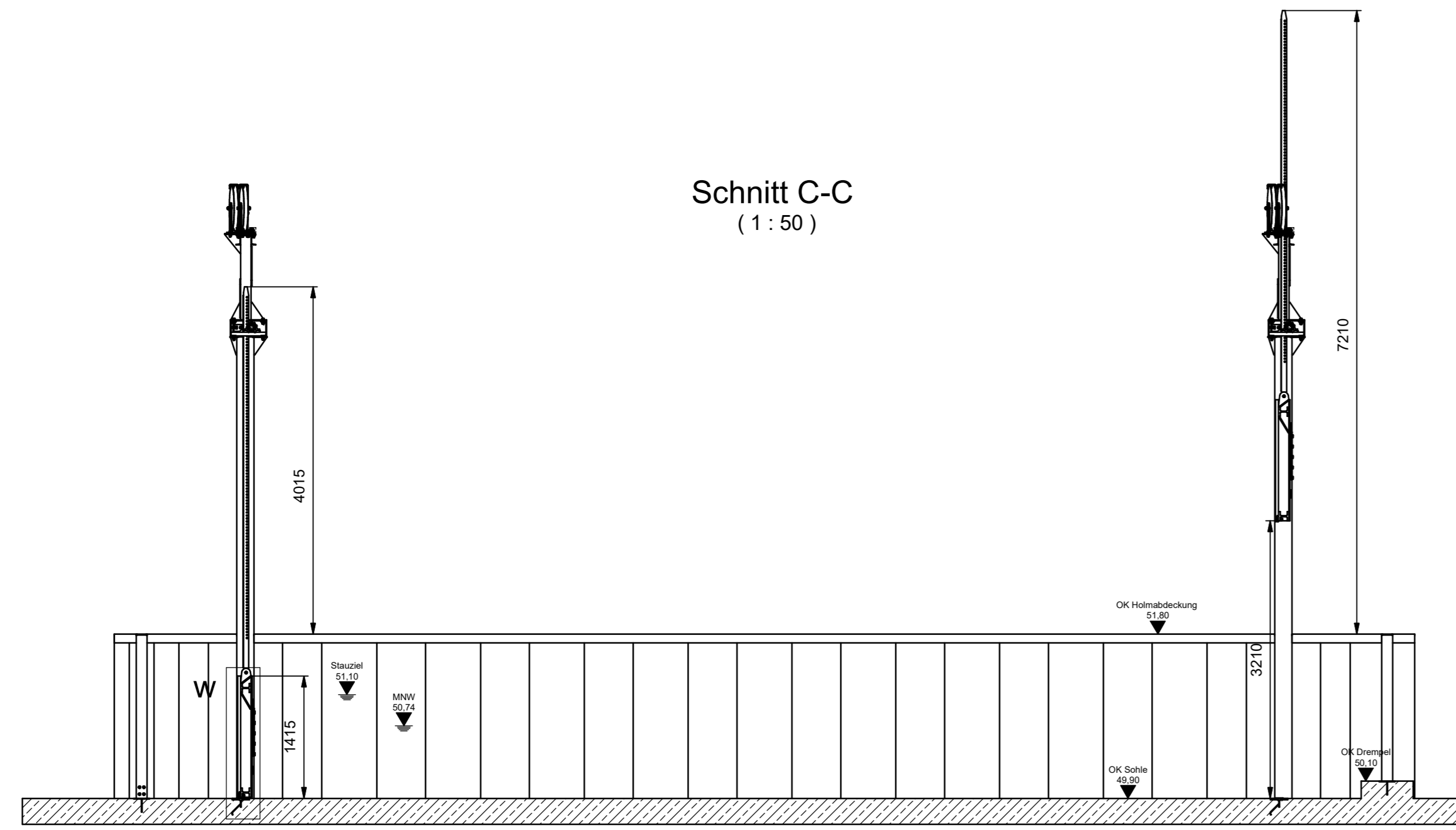


Schnitt C-C  
(1 : 50)

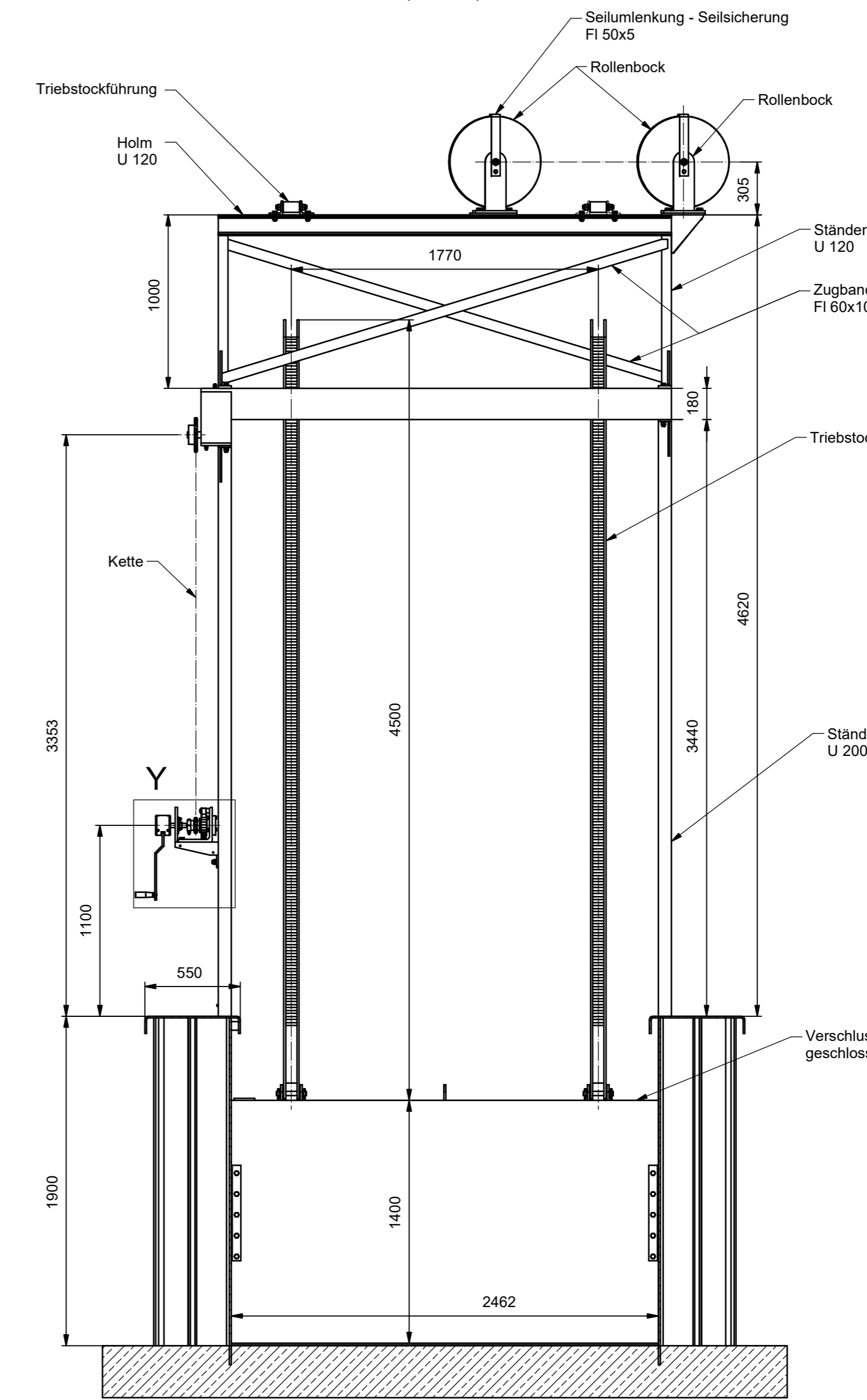


B

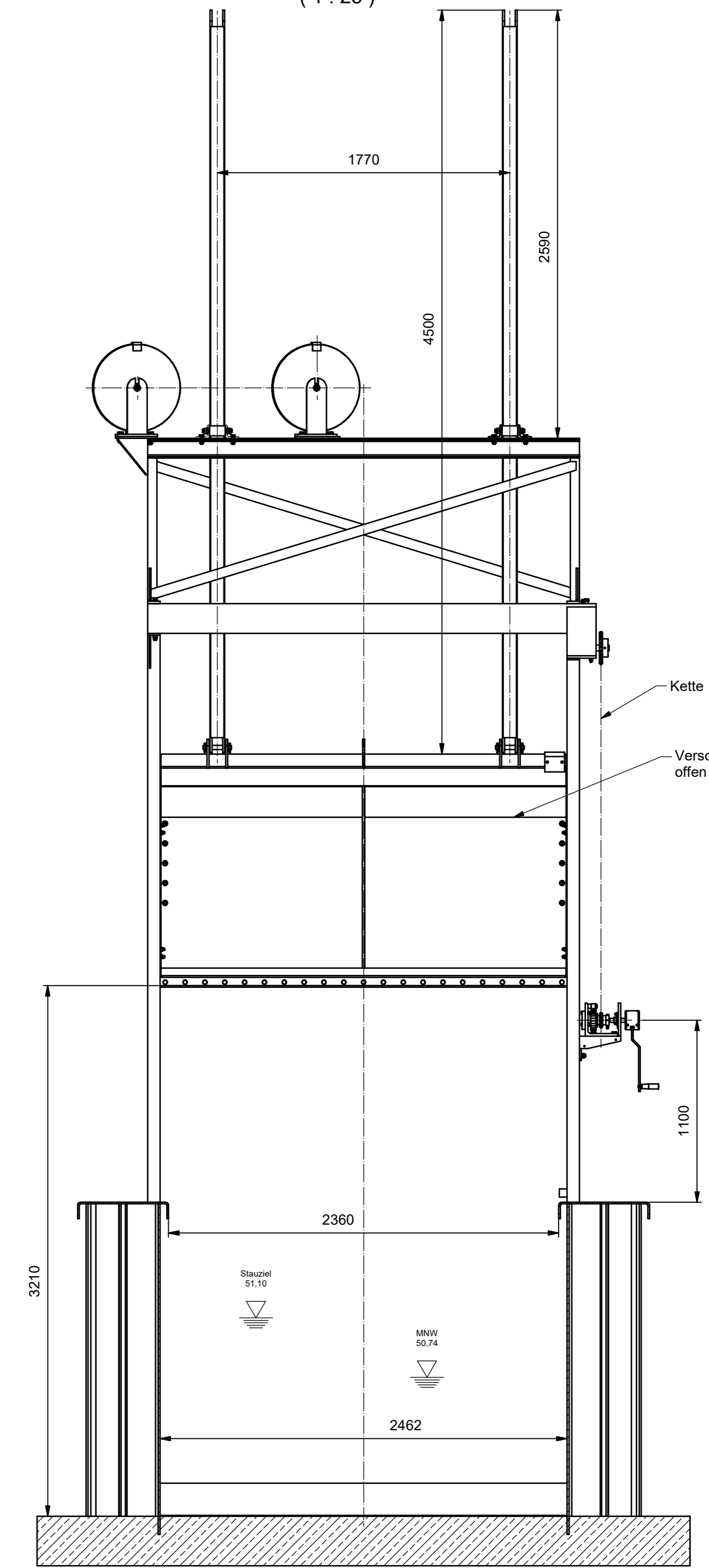
Z

B

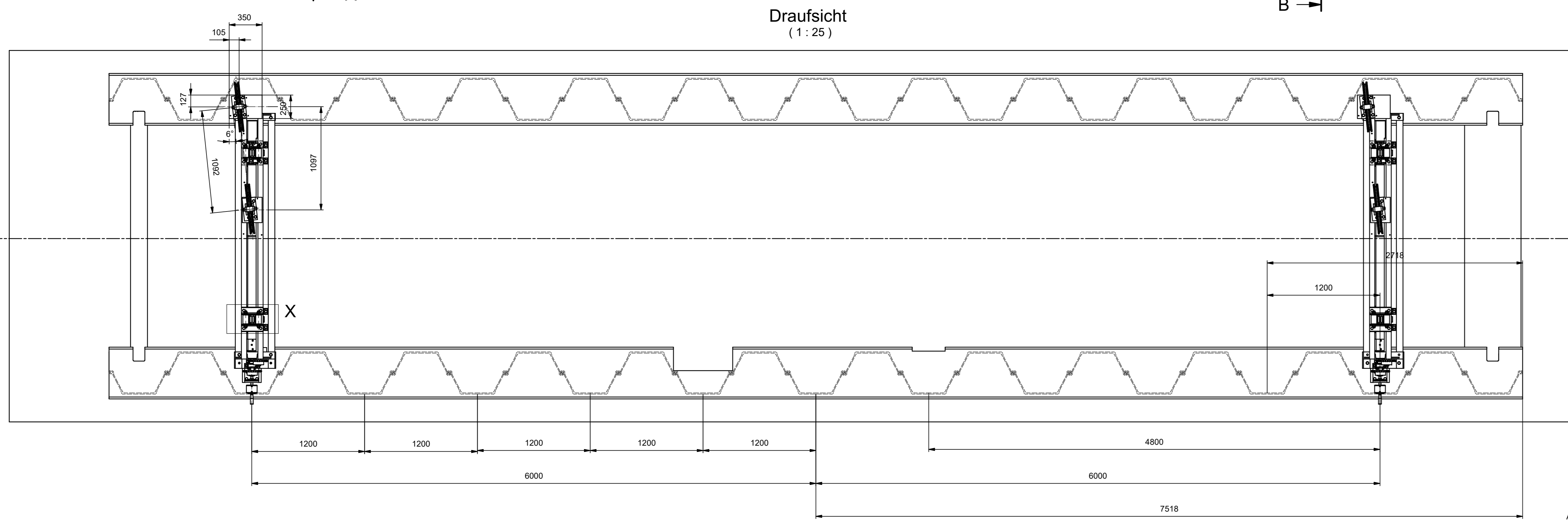
Schnitt A-A  
(1 : 25)



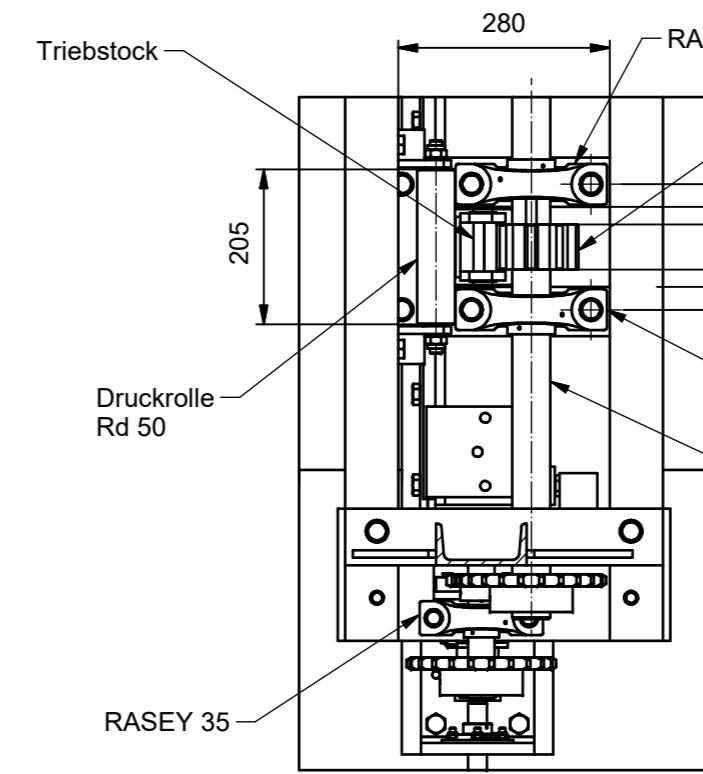
Schnitt B-B  
(1 : 25)



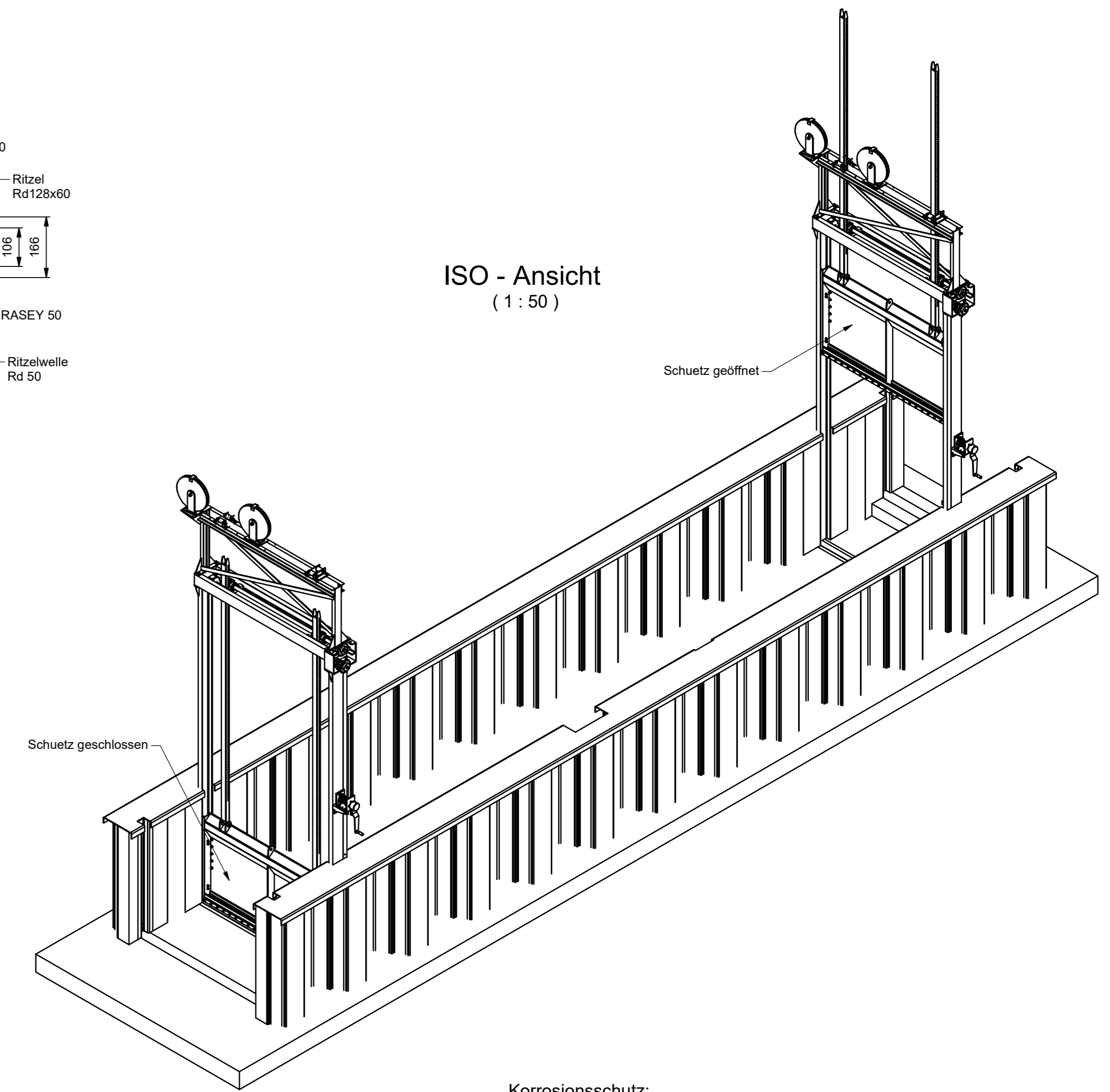
Draufsicht  
(1 : 25)



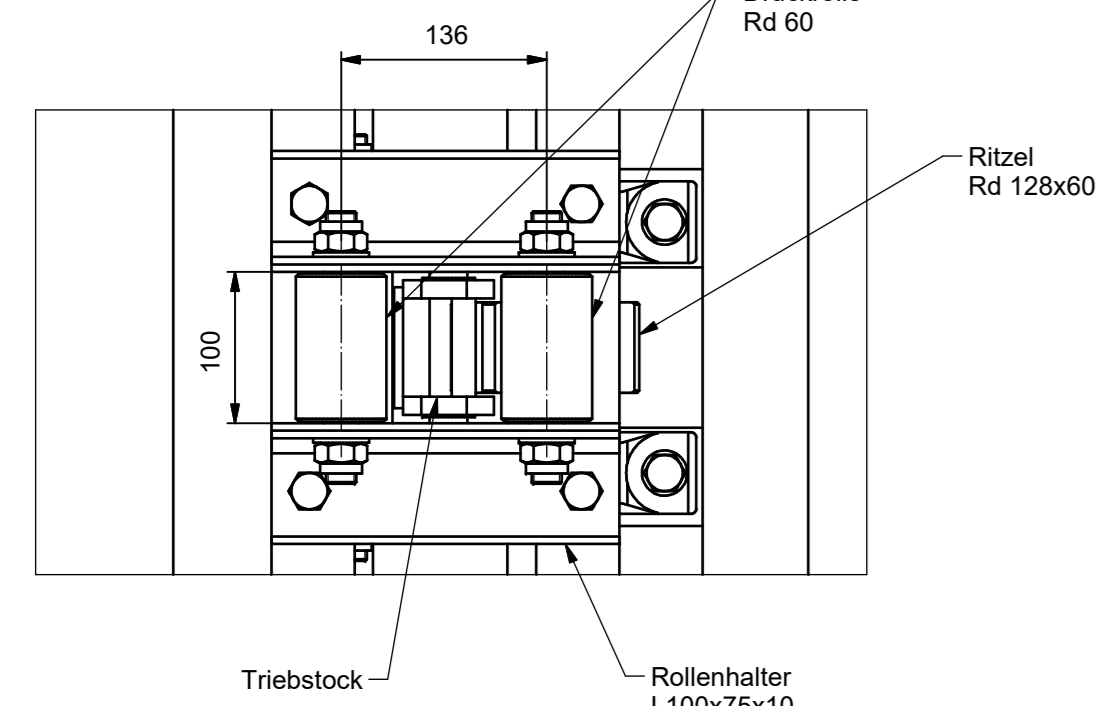
Schnitt D-D  
(1 : 10)



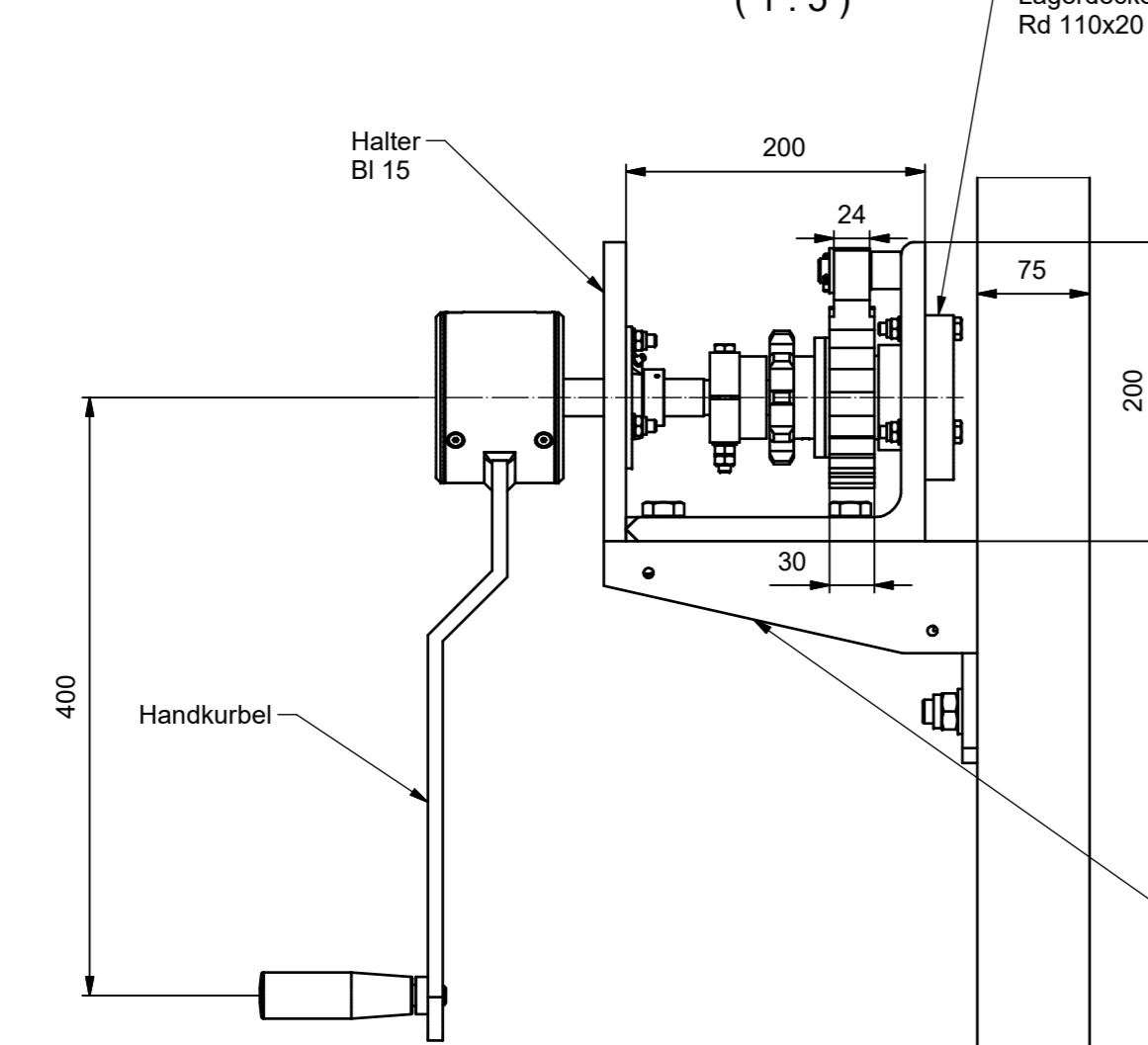
ISO - Ansicht  
(1 : 50)



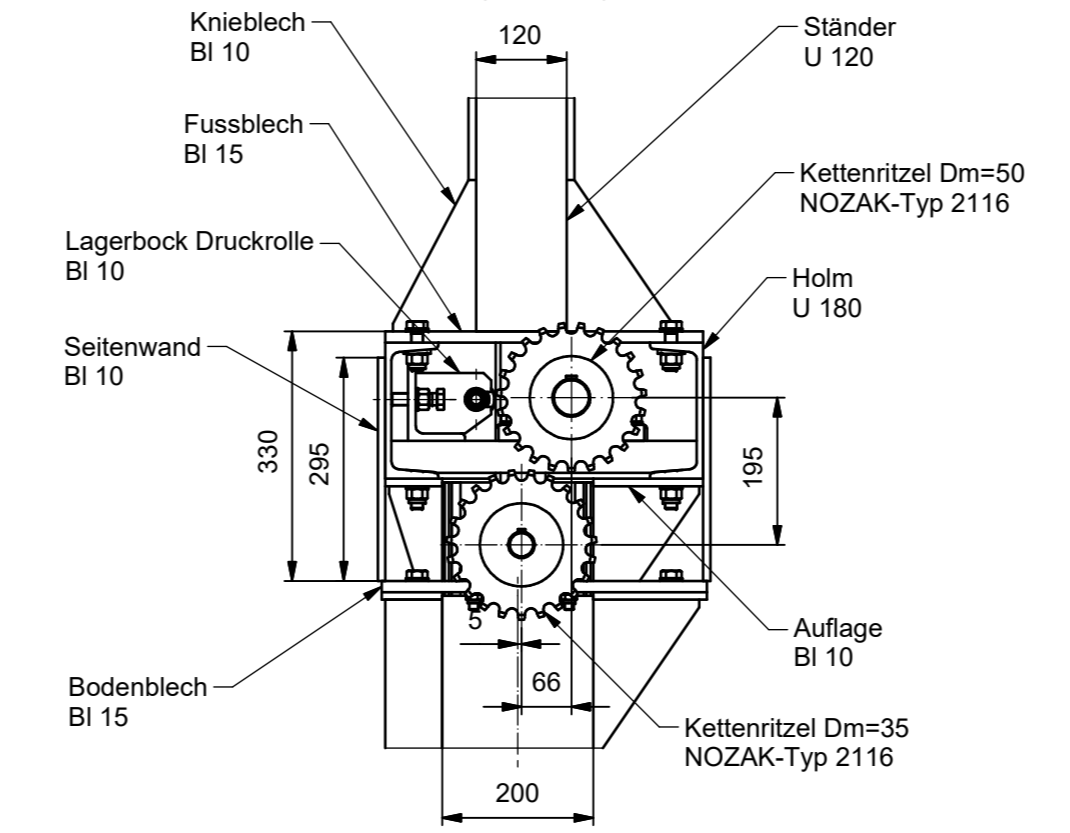
Detail X  
(1 : 5)



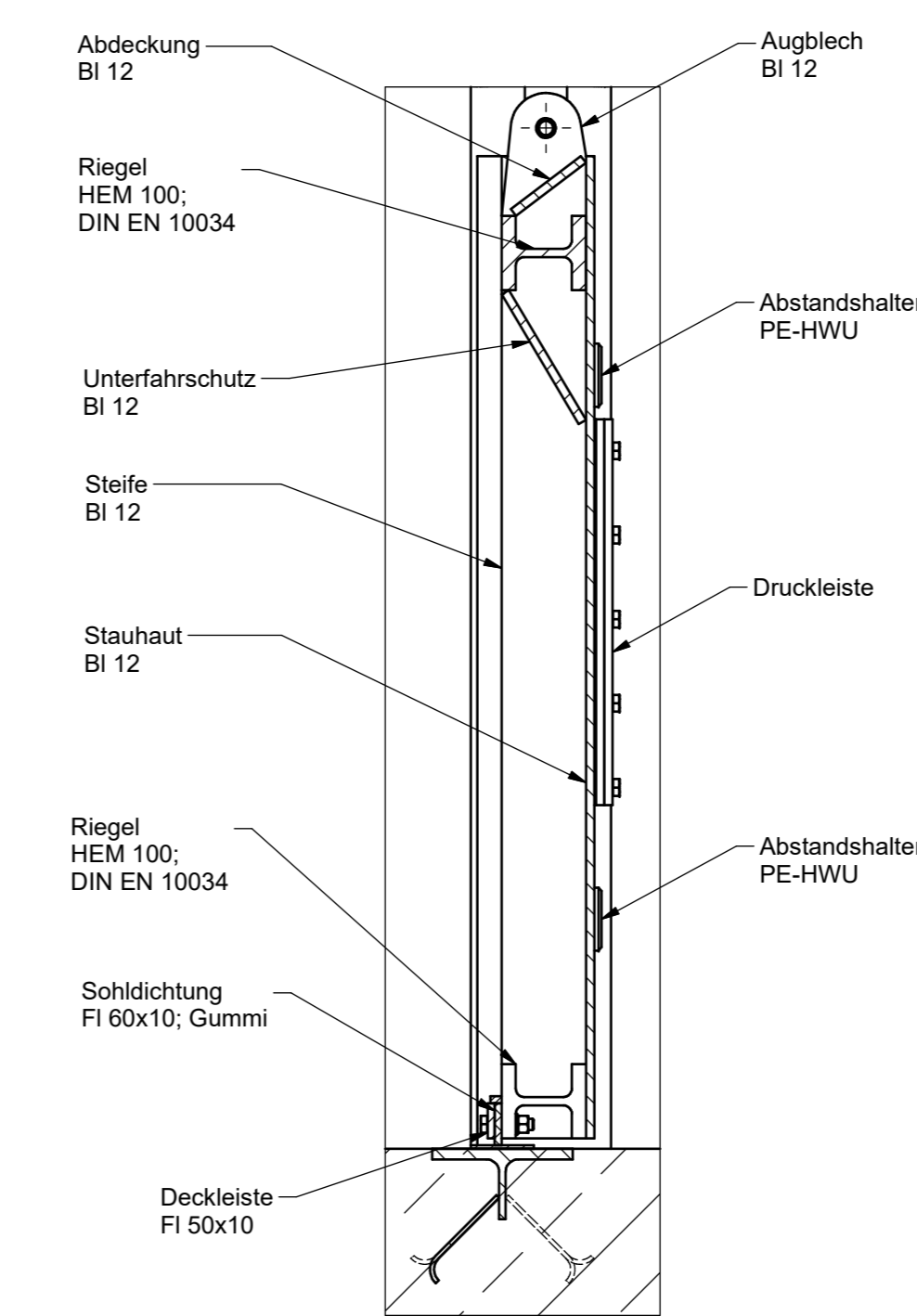
Detail Y  
(1 : 5)



Detail Z  
(1 : 10)



Detail w  
(1 : 10)



Korrosionsschutz:  
Wasser beaufschlagte Teile im 1/L  
Luft beaufschlagte Teile C4/L  
nach ZTV-A-W LB 218 (Ausg. 2009)  
und DIN EN ISO 12944

Alle Maße sind am Bauwerk zu überprüfen

Toleranz:		Oberfläche:		Maßstab: 1:25		Position:	
Entwurfszeichnung							
Übersicht Schleuse							
Schleuse 42							
Blatt 1							
AD							

Zust. 21 22 23 24