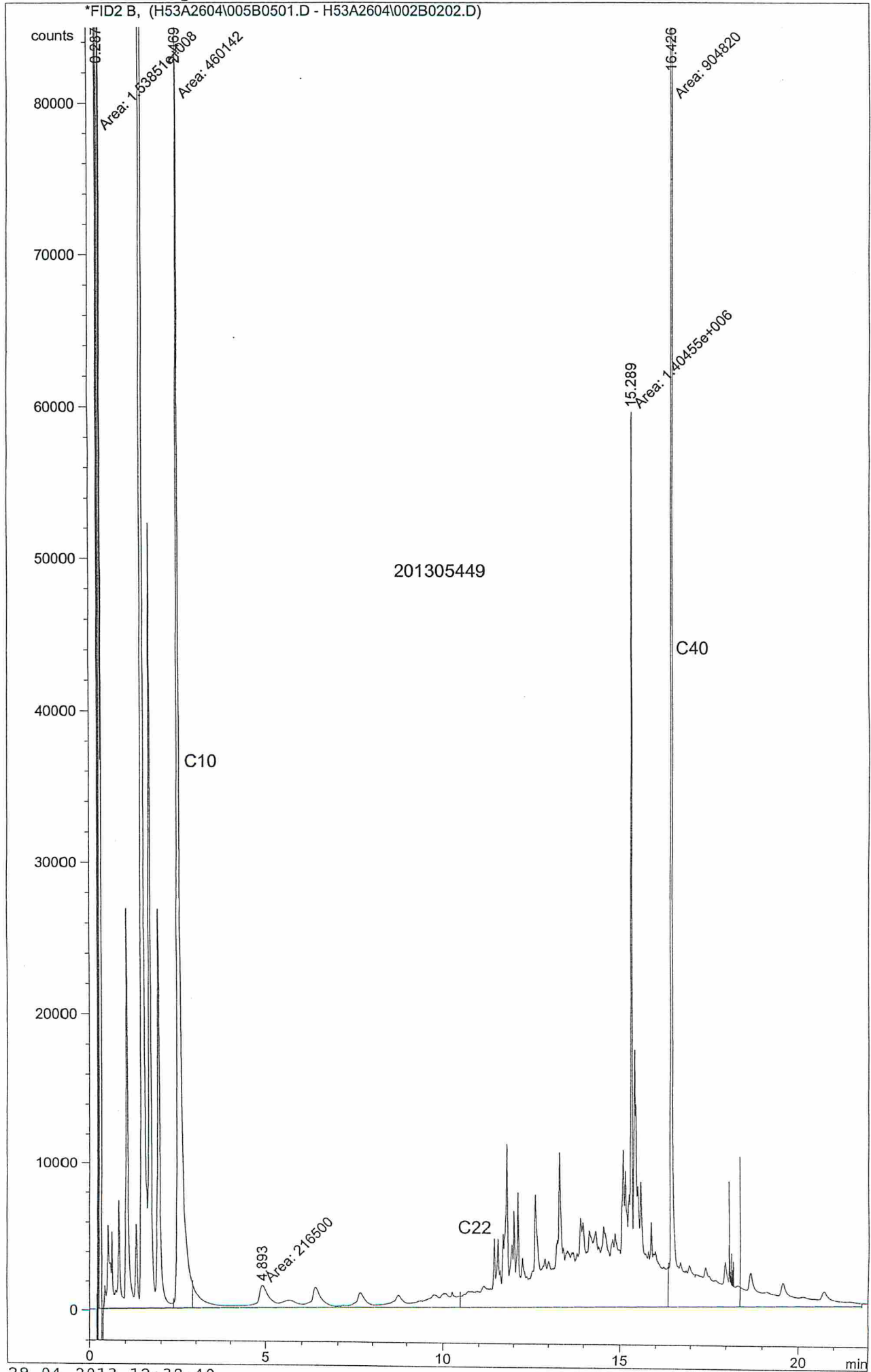


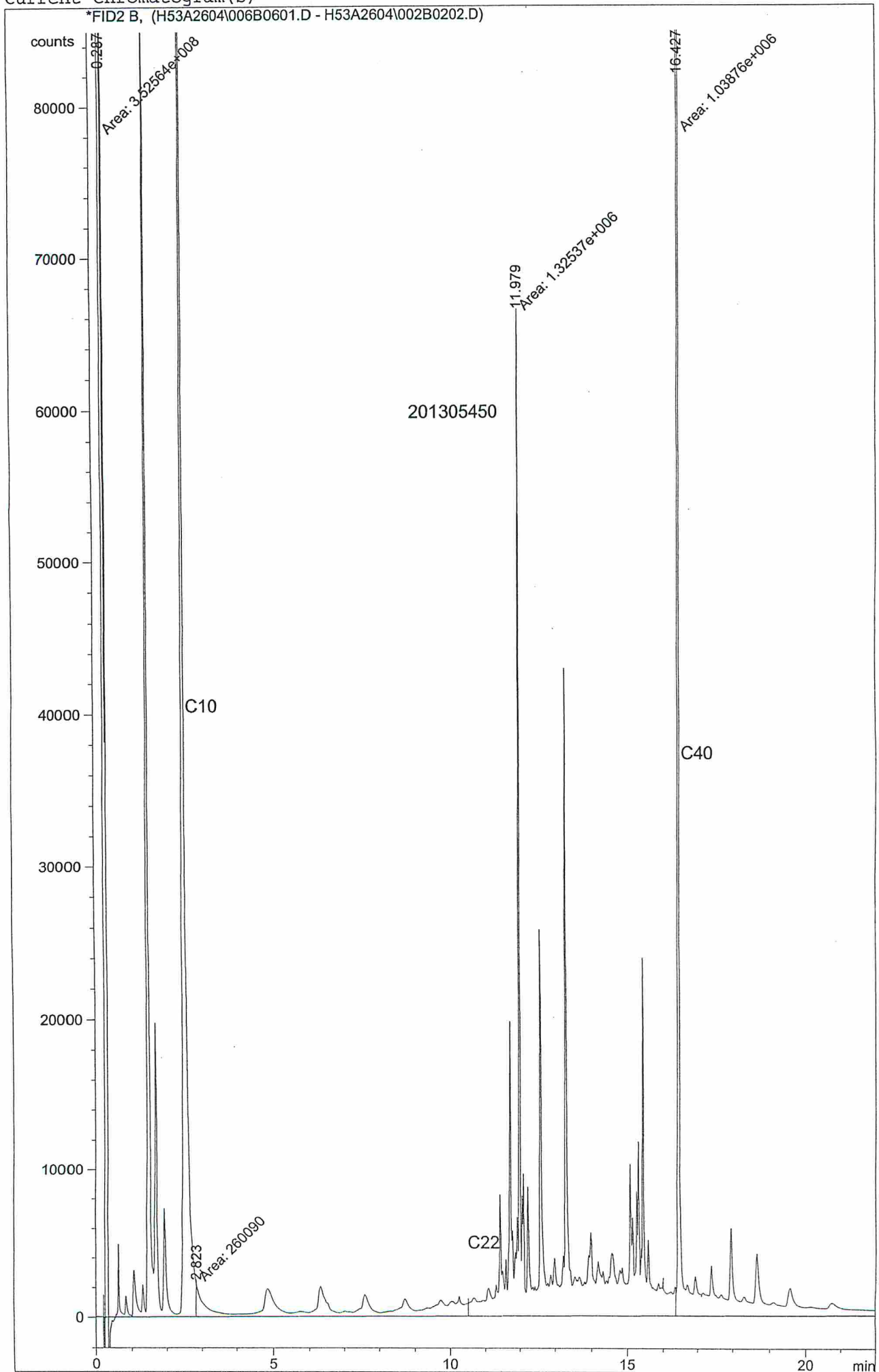
Current Chromatogram(s)

*FID2 B, (H53A2604\005B0501.D - H53A2604\002B0202.D)



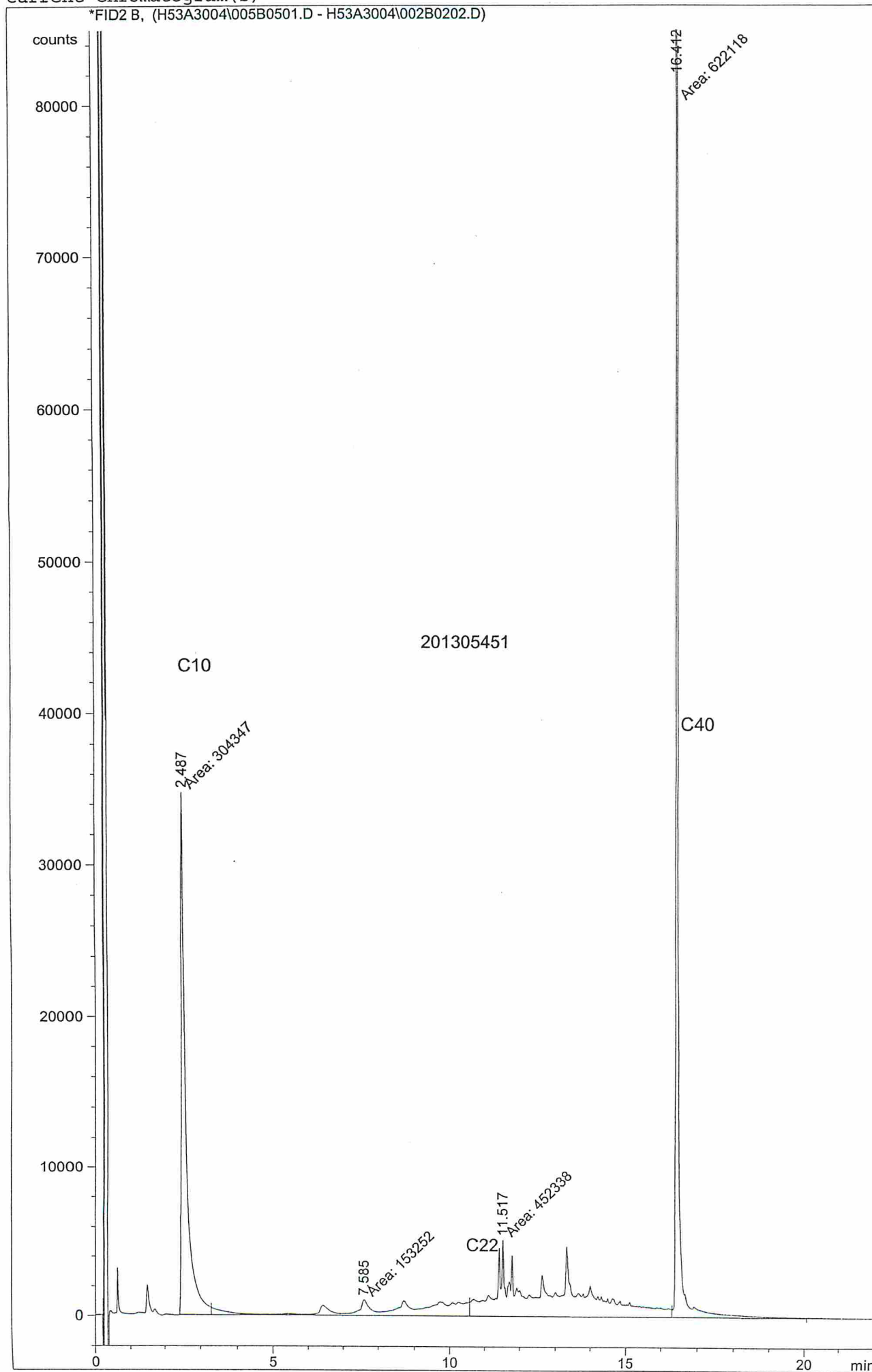
Current Chromatogram(s)

*FID2 B, (H53A2604\006B0601.D - H53A2604\002B0202.D)



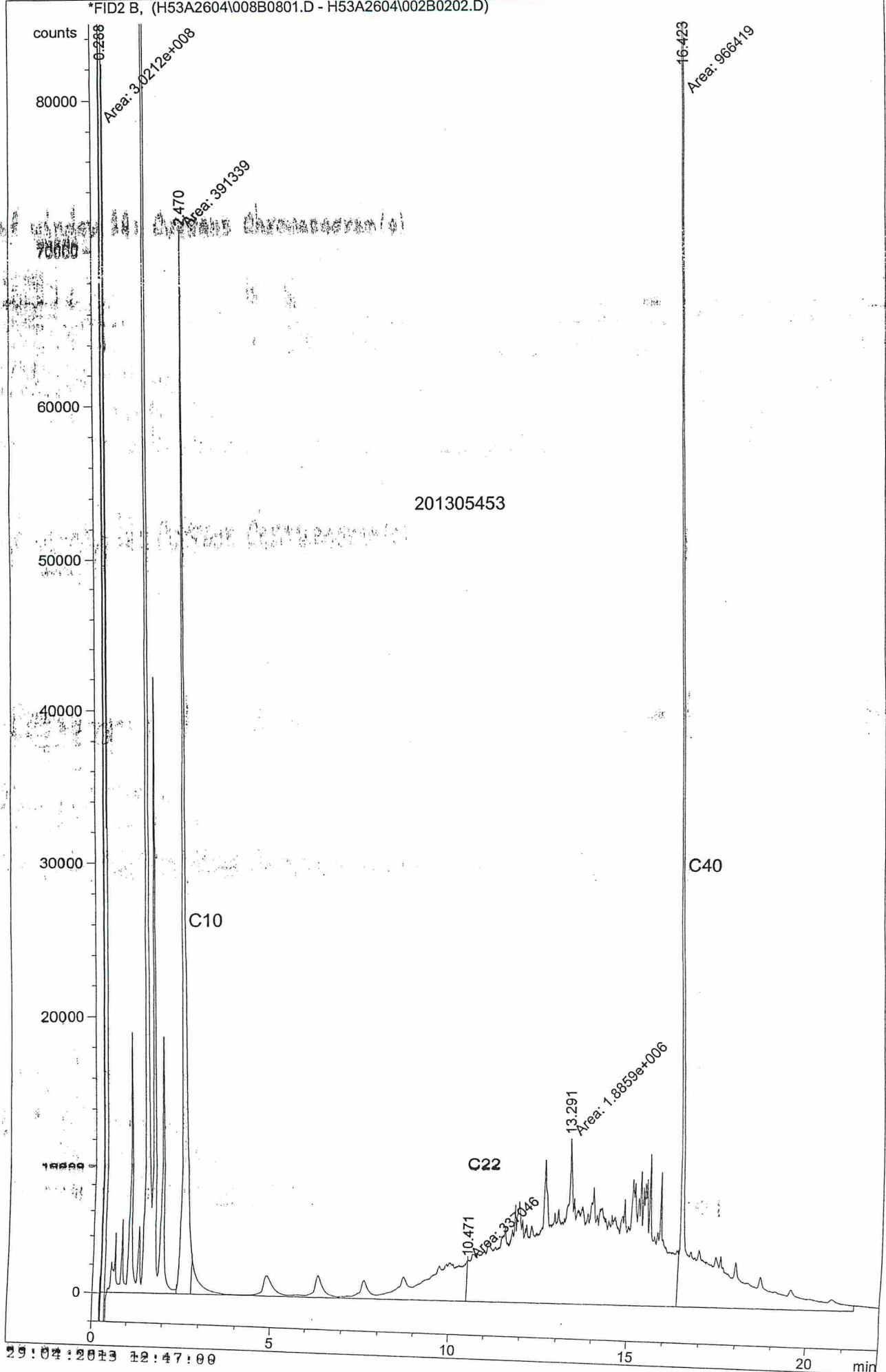
Current Chromatogram(s)

*FID2 B, (H53A3004\005B0501.D - H53A3004\002B0202.D)



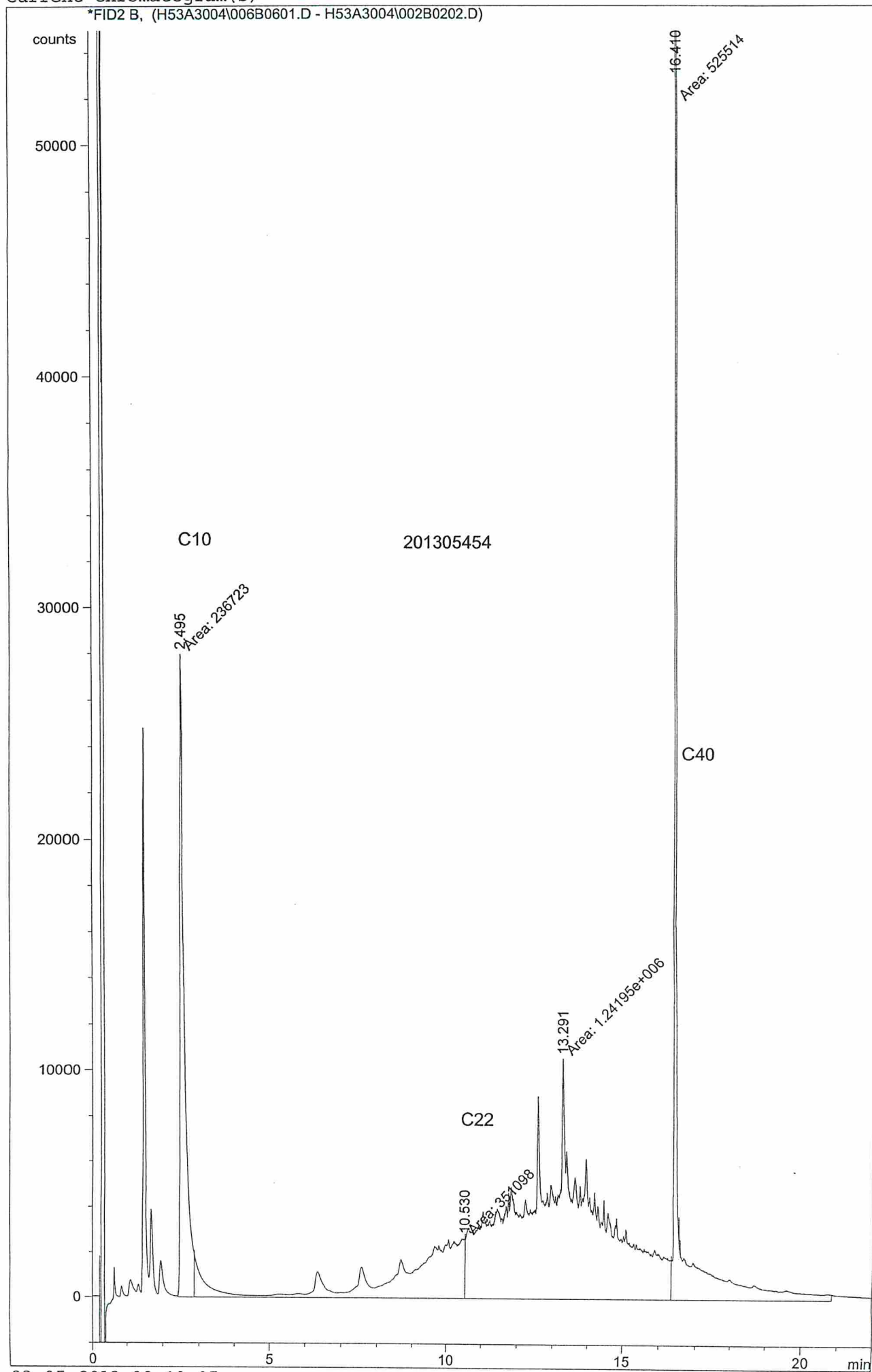
Current Chromatogram (s)

*FID2 B, (H53A2604\008B0801.D - H53A2604\002B0202.D)



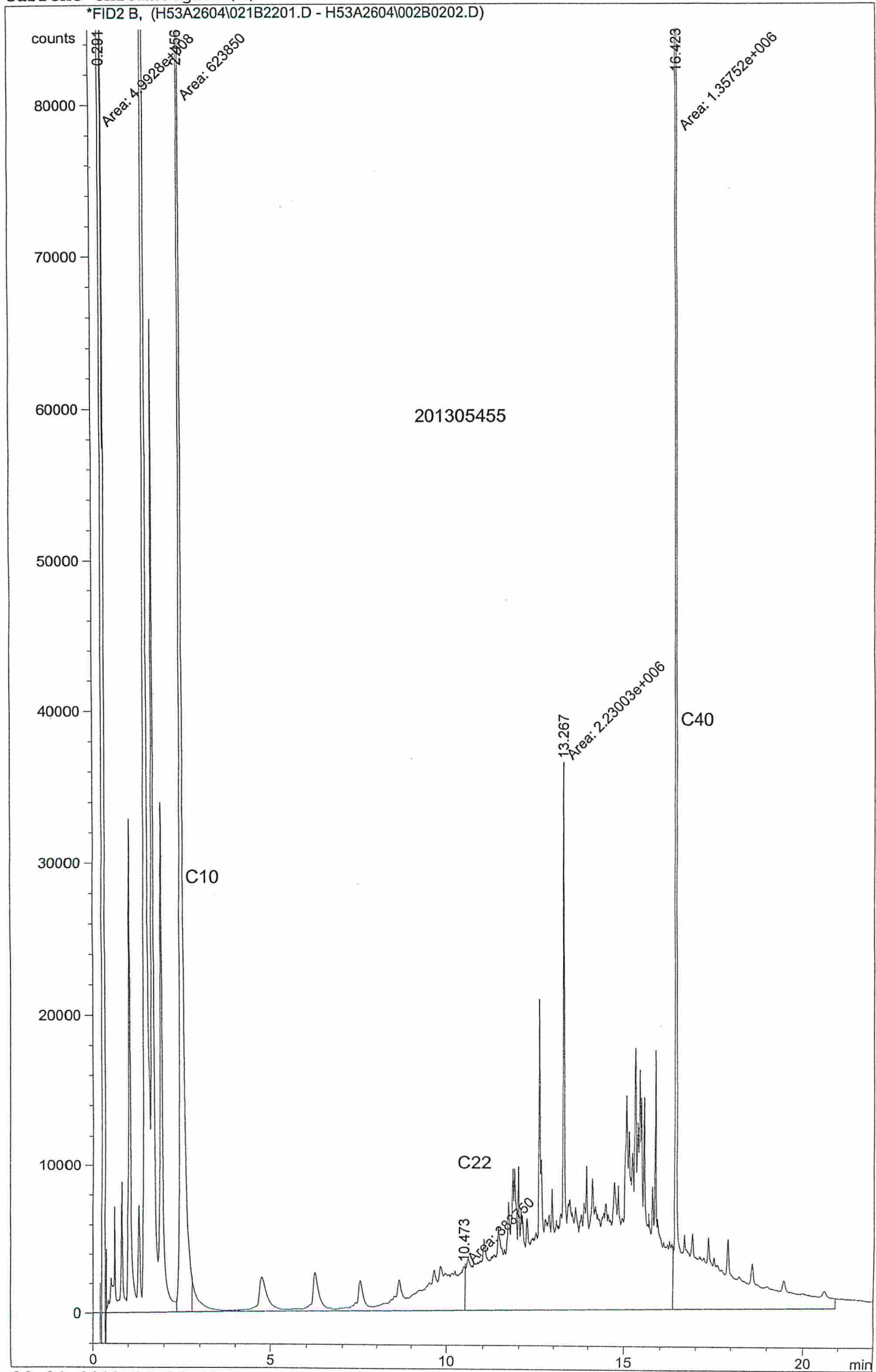
Current Chromatogram(s)

*FID2 B, (H53A3004\006B0601.D - H53A3004\002B0202.D)

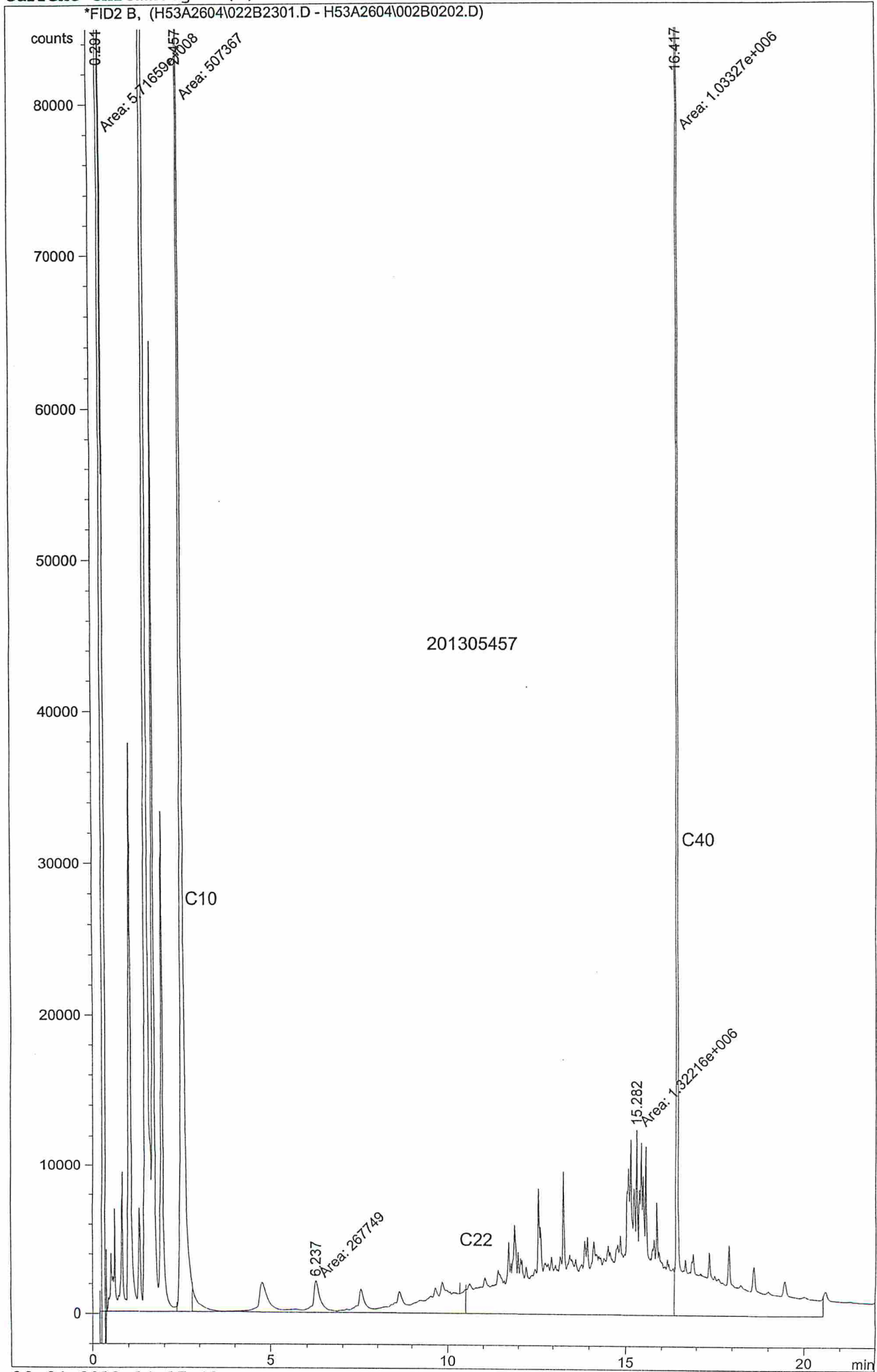


Current Chromatogram(s)

*FID2 B, (H53A2604\021B2201.D - H53A2604\002B0202.D)

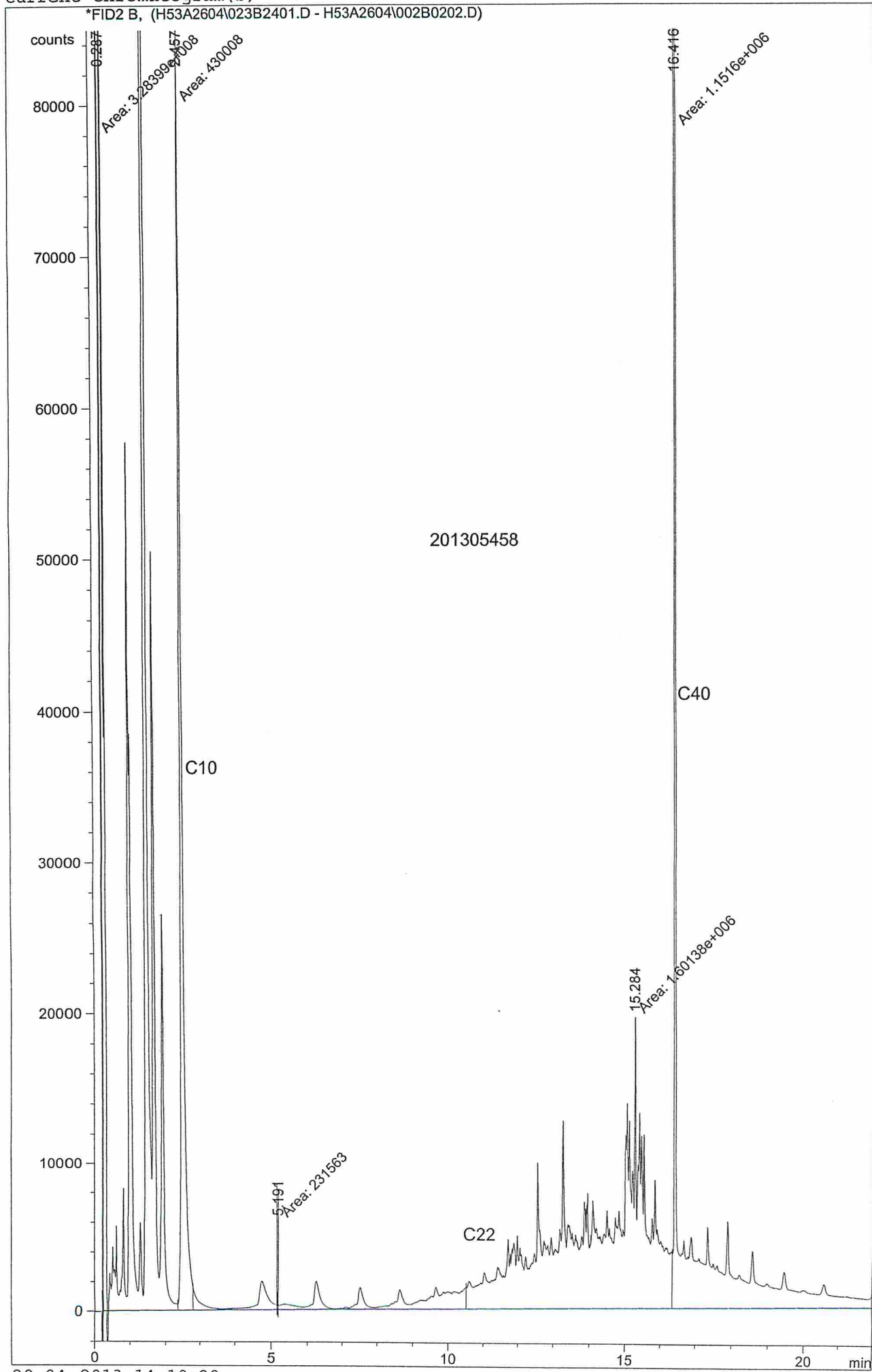


Current Chromatogram(s)



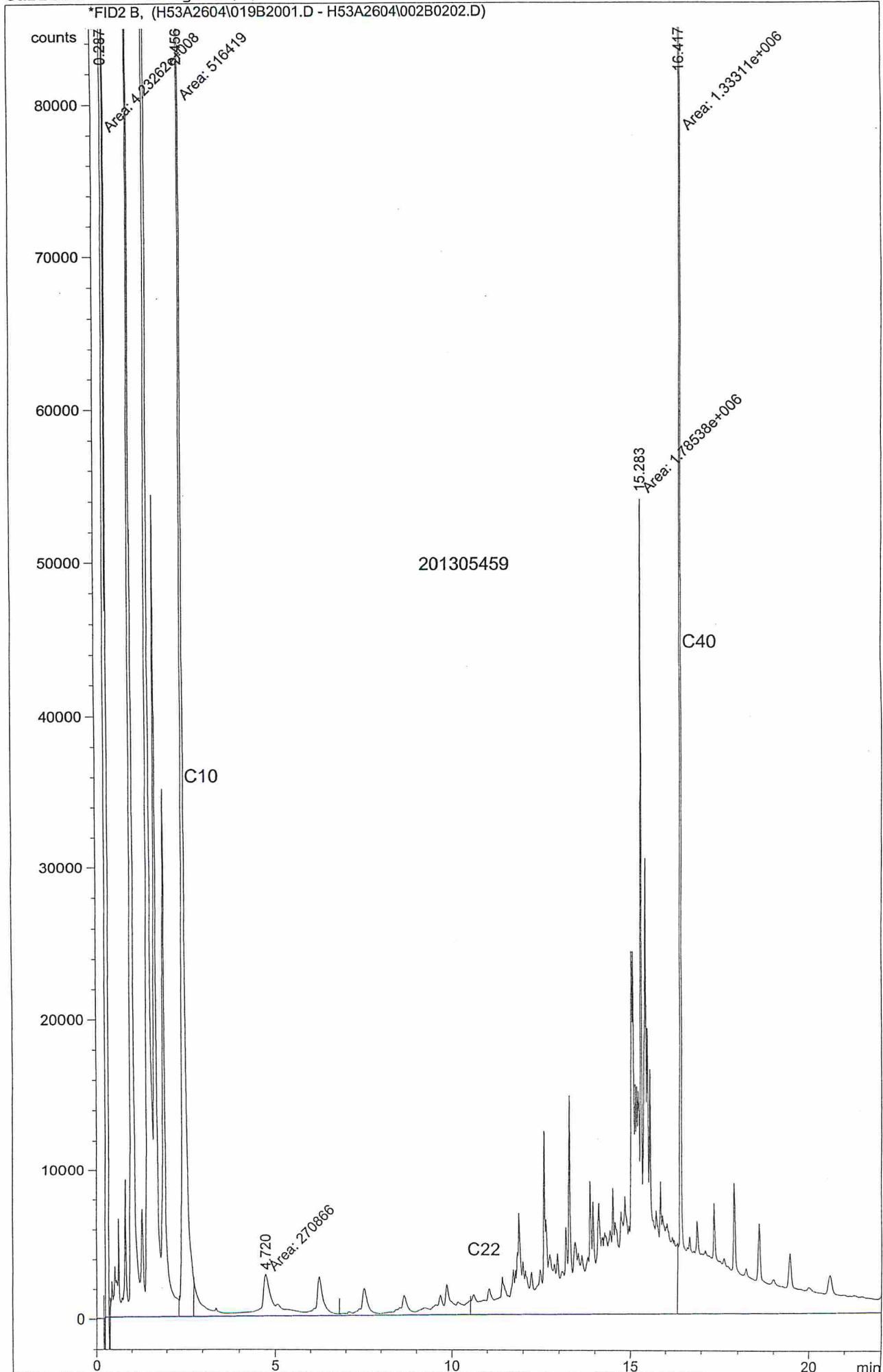
Current Chromatogram(s)

*FID2 B, (H53A2604\023B2401.D - H53A2604\002B0202.D)



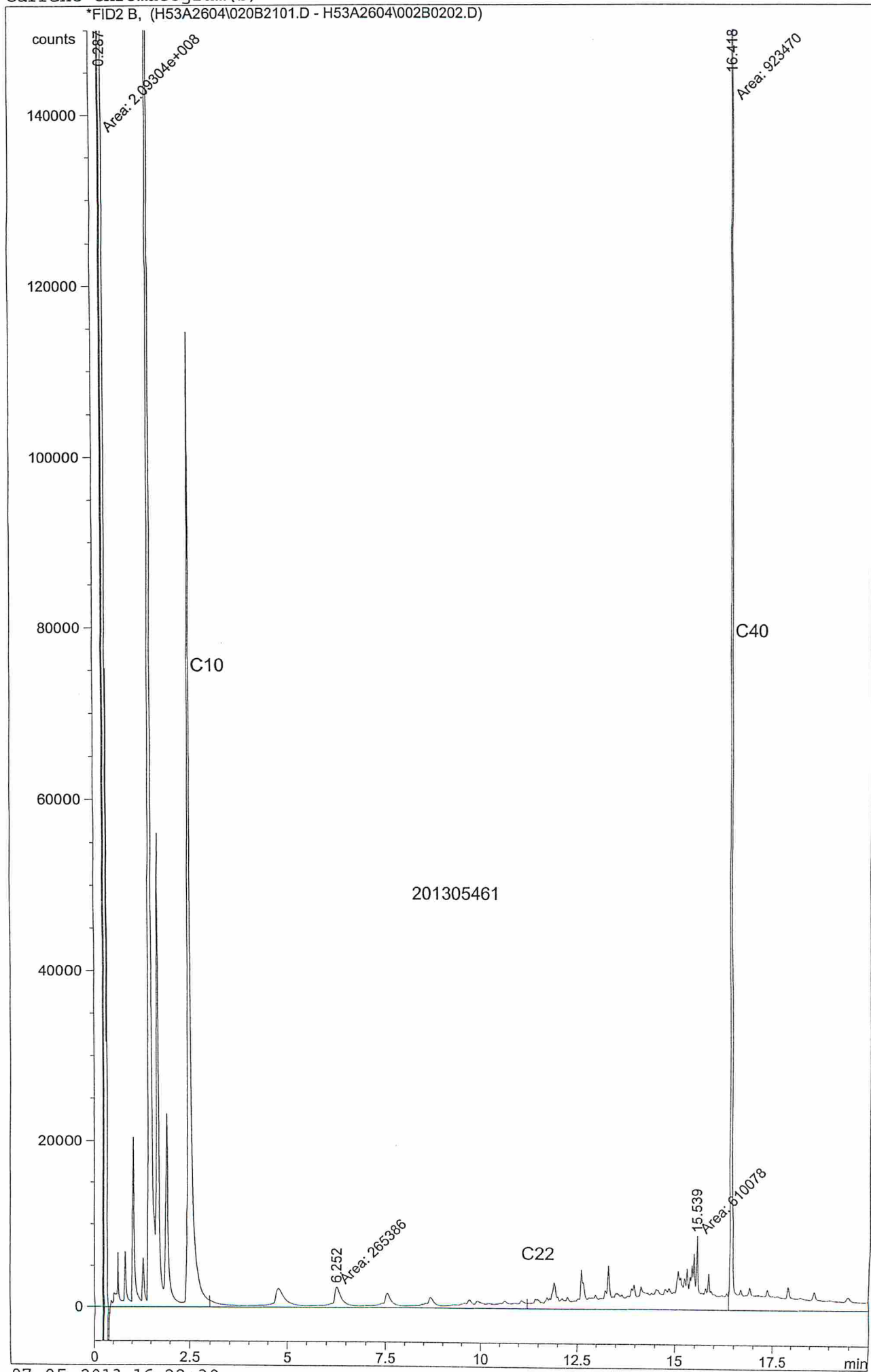
Current Chromatogram(s)

*FID2 B, (H53A2604\019B2001.D - H53A2604\002B0202.D)



Current Chromatogram(s)

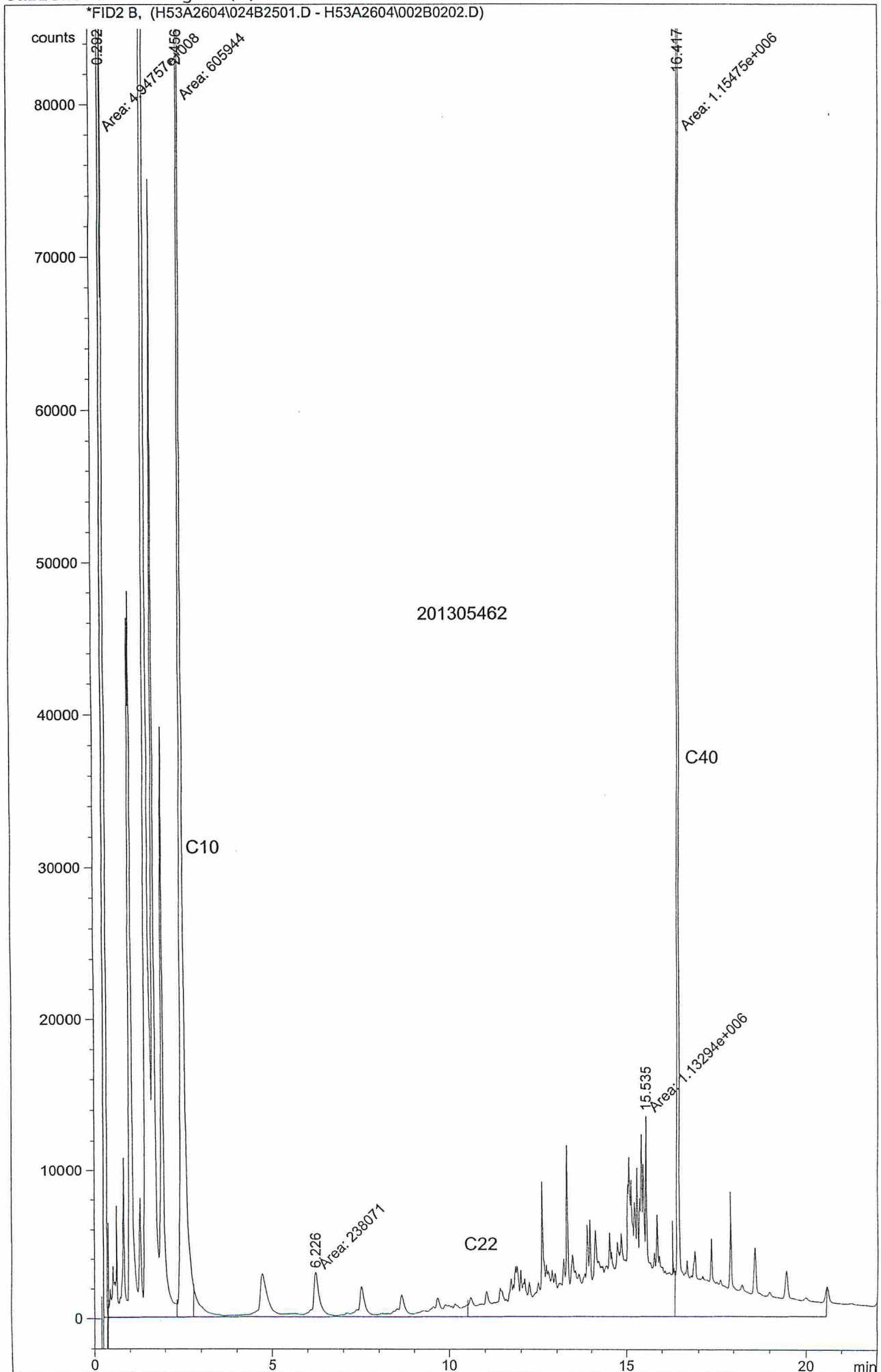
*FID2 B, (H53A2604\020B2101.D - H53A2604\002B0202.D)



201305461

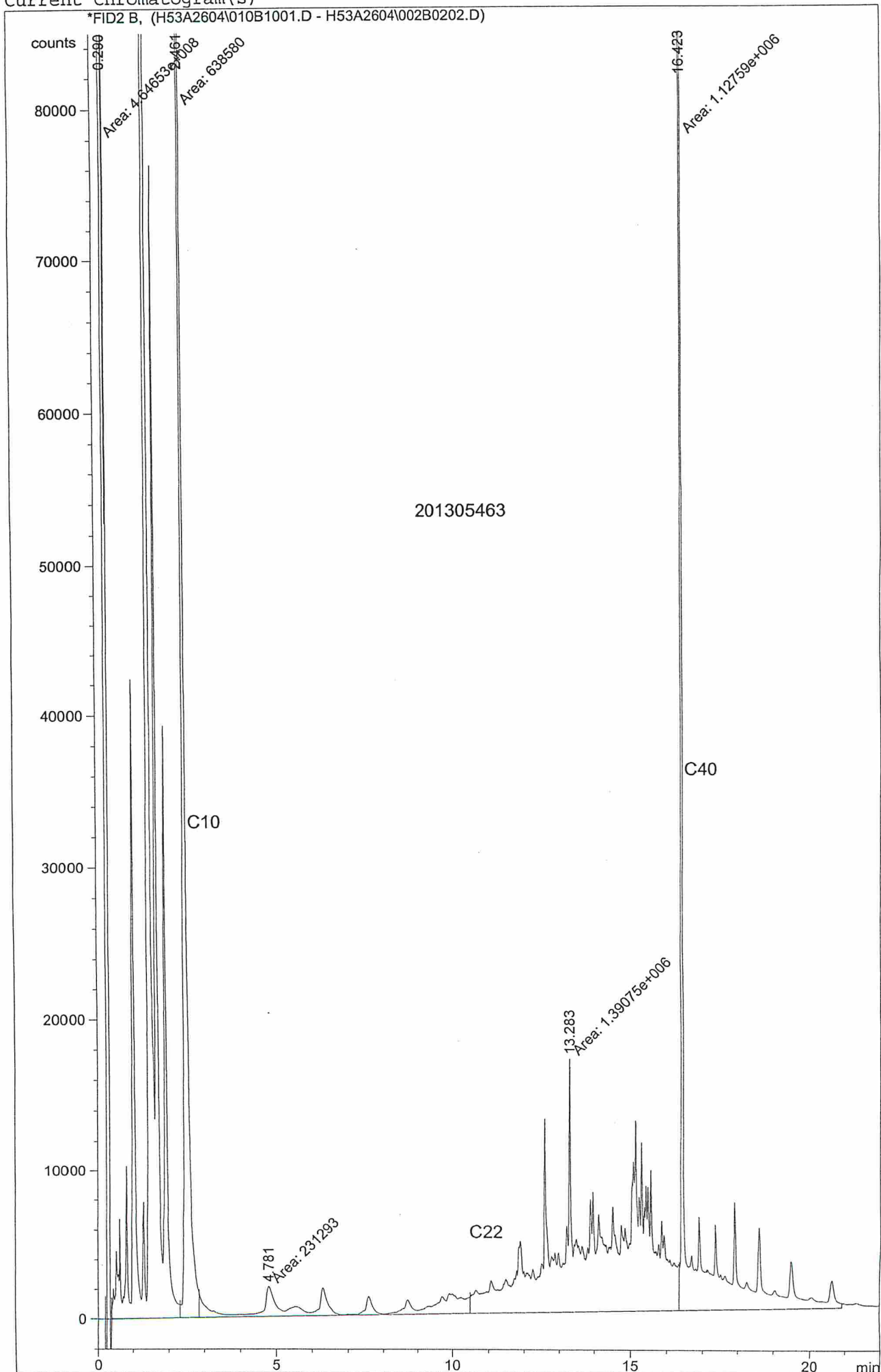
Current Chromatogram(s)

*FID2 B, (H53A2604\024B2501.D - H53A2604\002B0202.D)



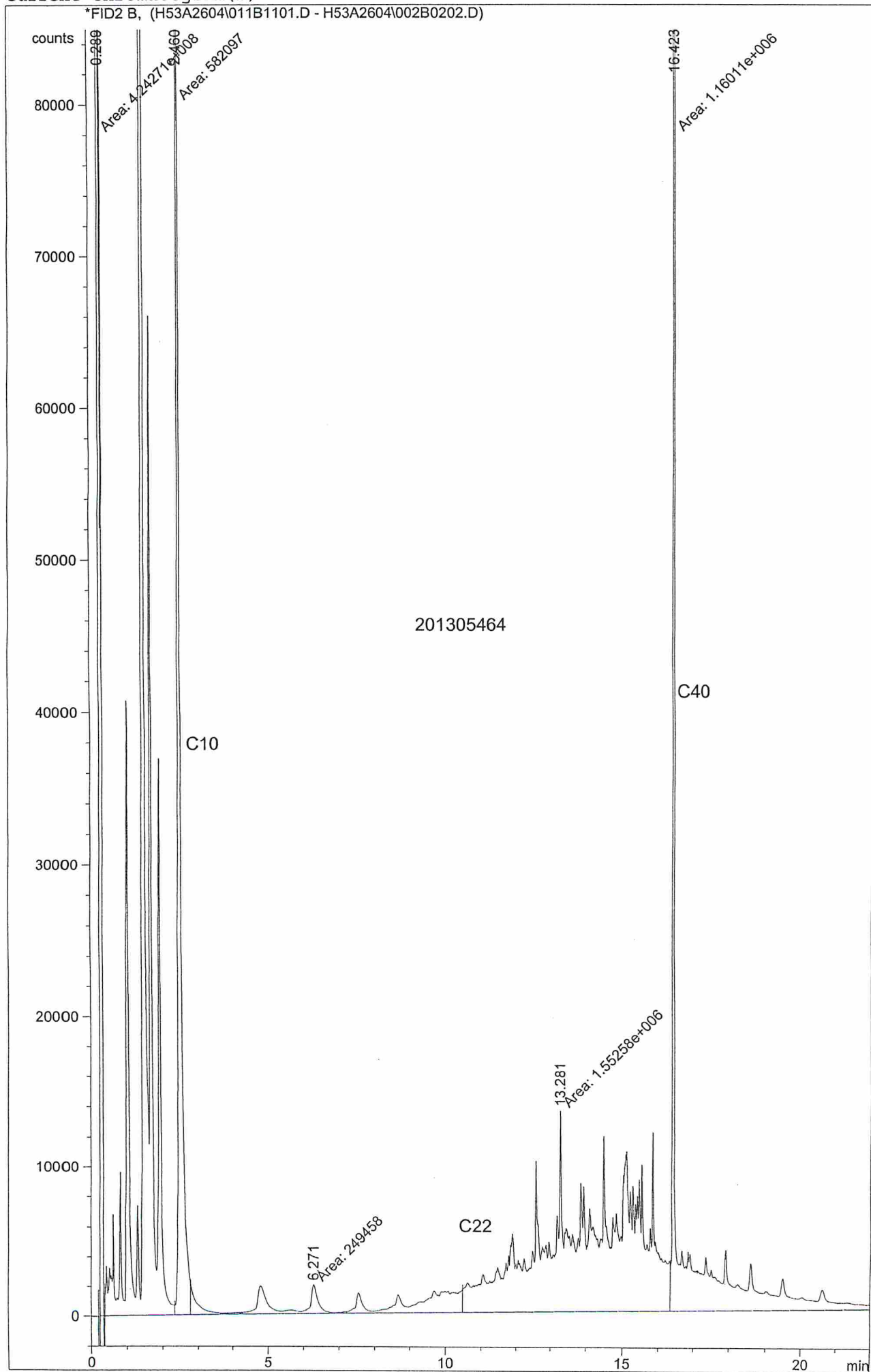
Current Chromatogram (s)

*FID2 B, (H53A2604\010B1001.D - H53A2604\002B0202.D)



Current Chromatogram(s)

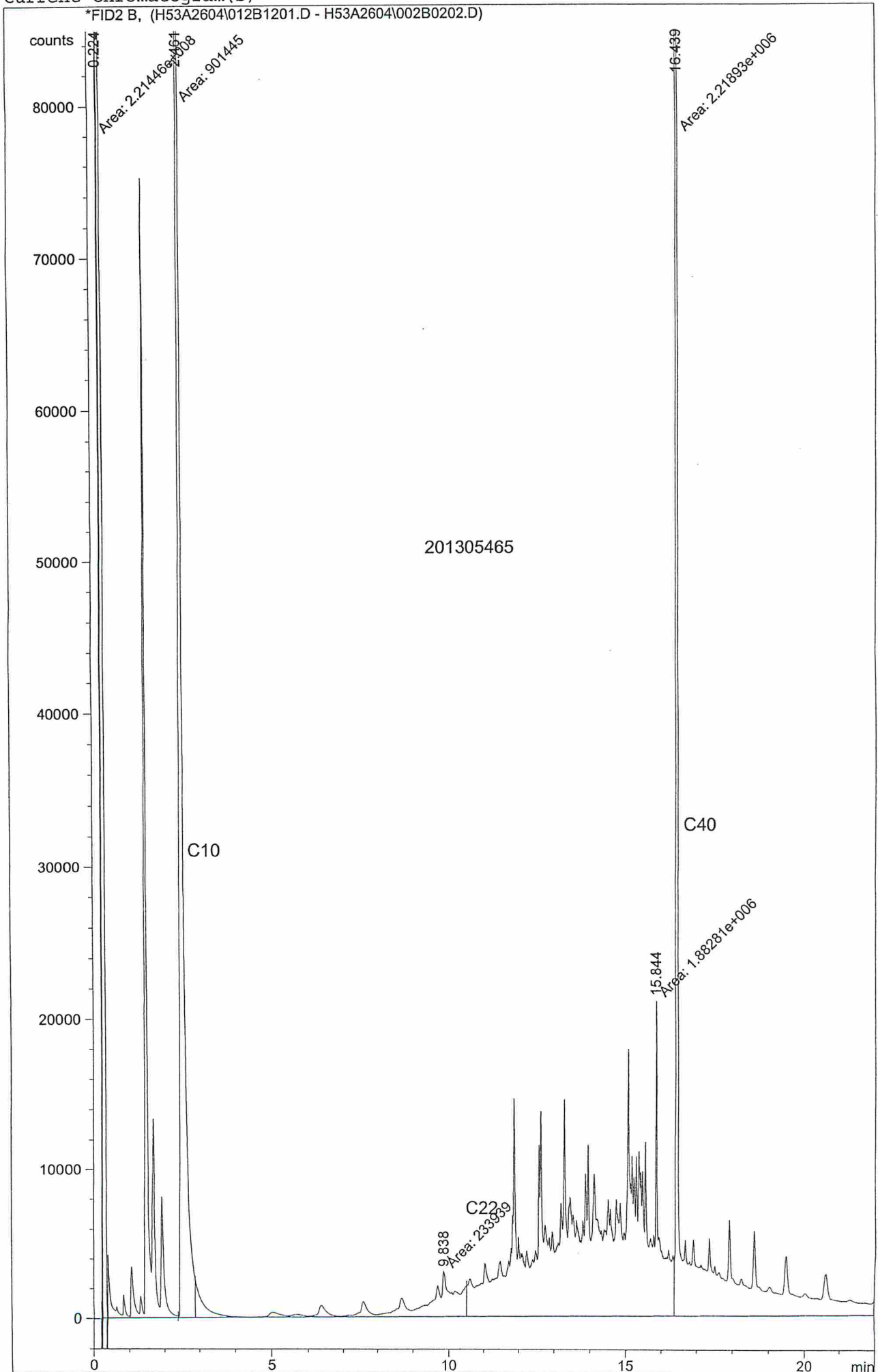
*FID2 B, (H53A2604\011B1101.D - H53A2604\002B0202.D)



201305464

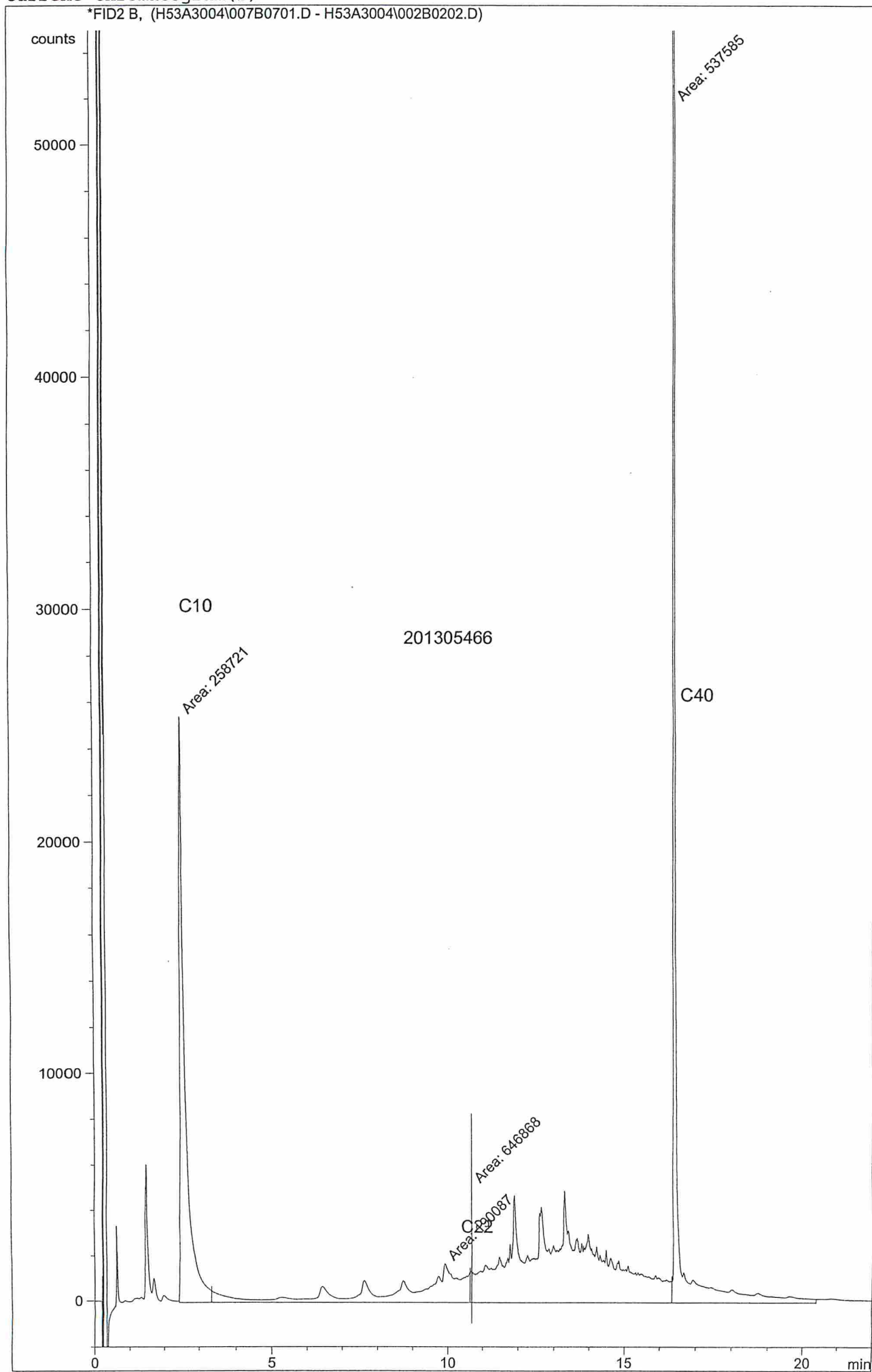
Current Chromatogram(s)

*FID2 B, (H53A2604\012B1201.D - H53A2604\002B0202.D)



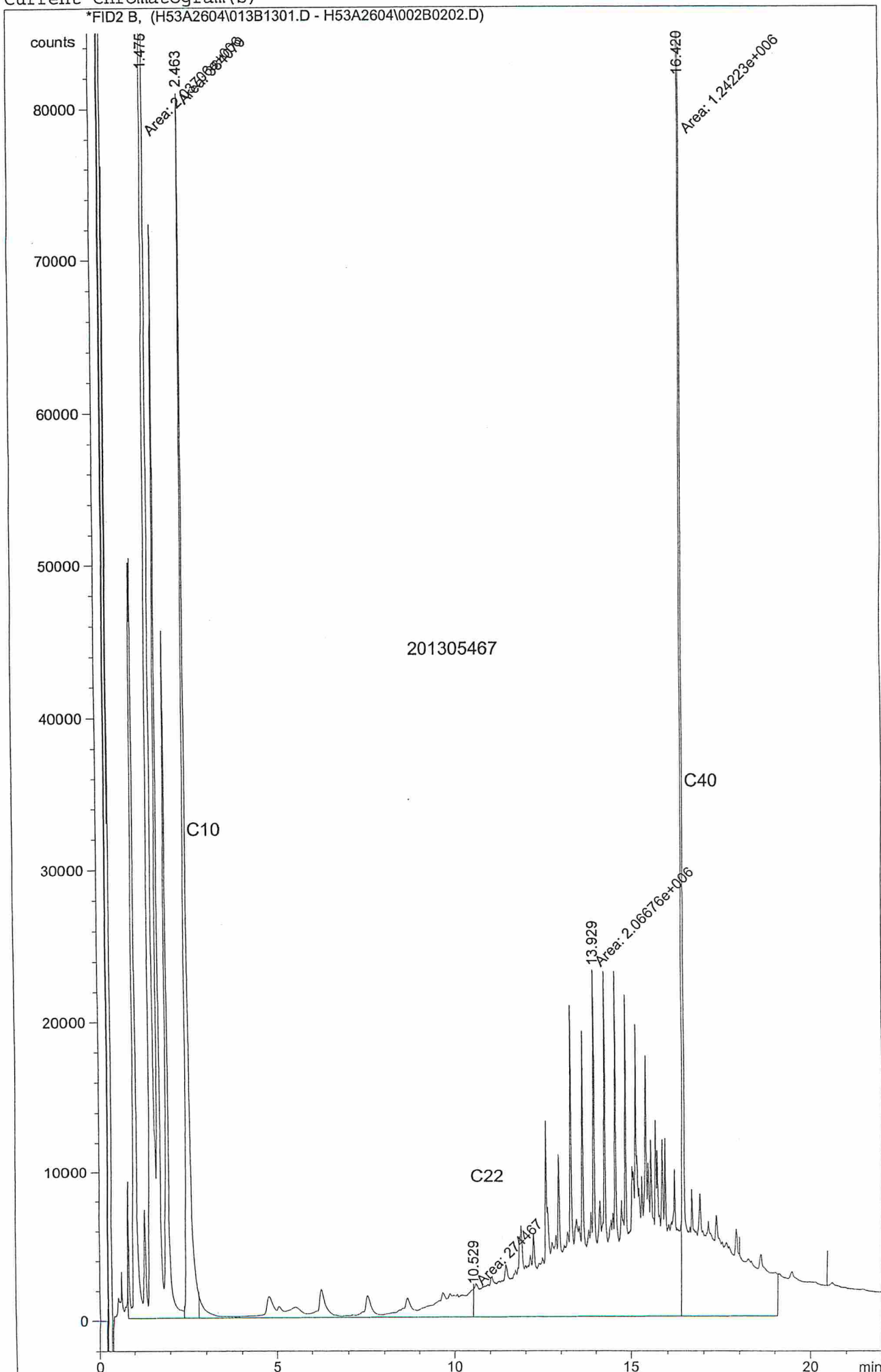
Current Chromatogram (s)

*FID2 B, (H53A3004\007B0701.D - H53A3004\002B0202.D)



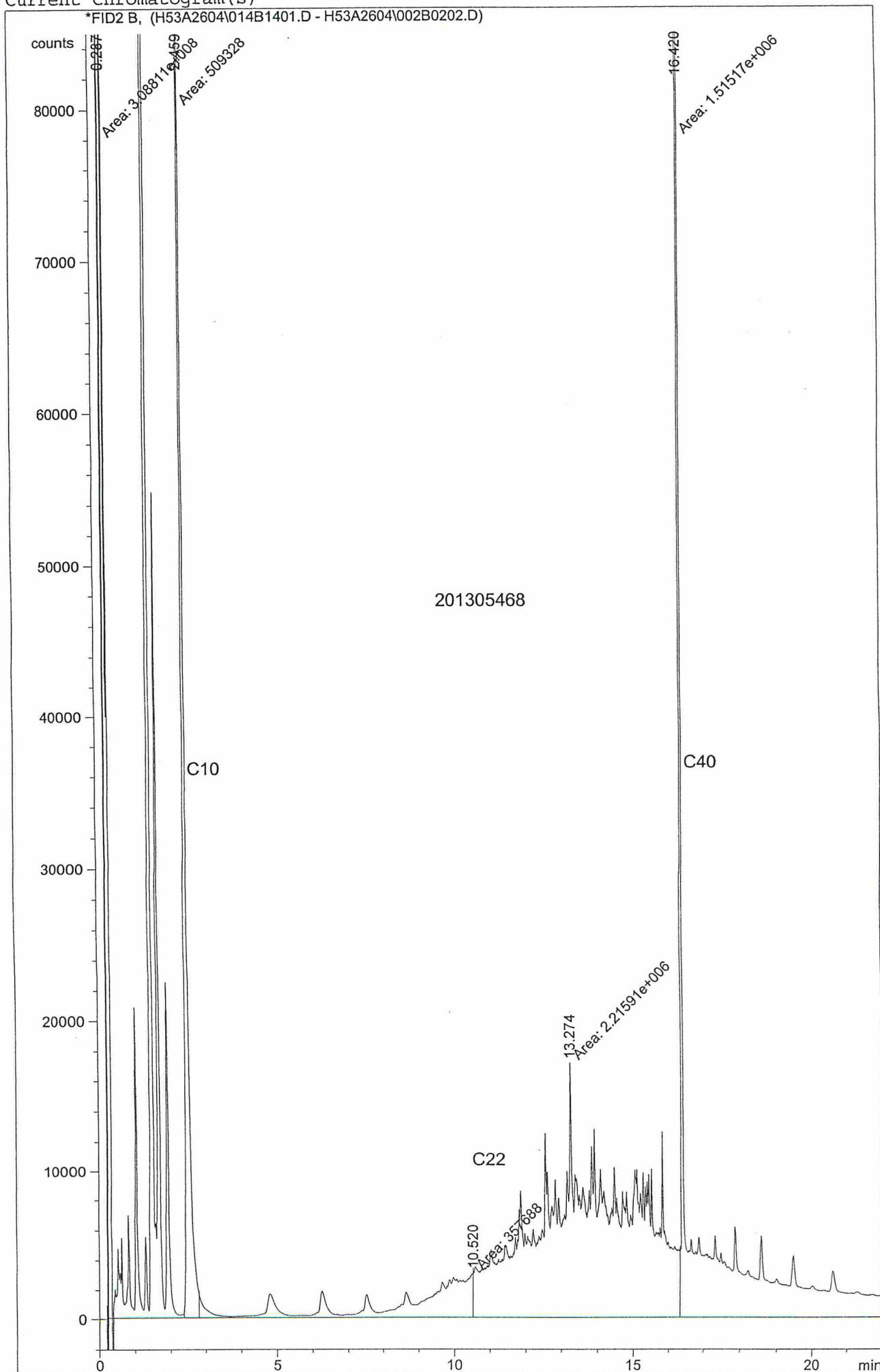
Current Chromatogram(s)

*FID2 B, (H53A2604\013B1301.D - H53A2604\002B0202.D)



Current Chromatogram(s)

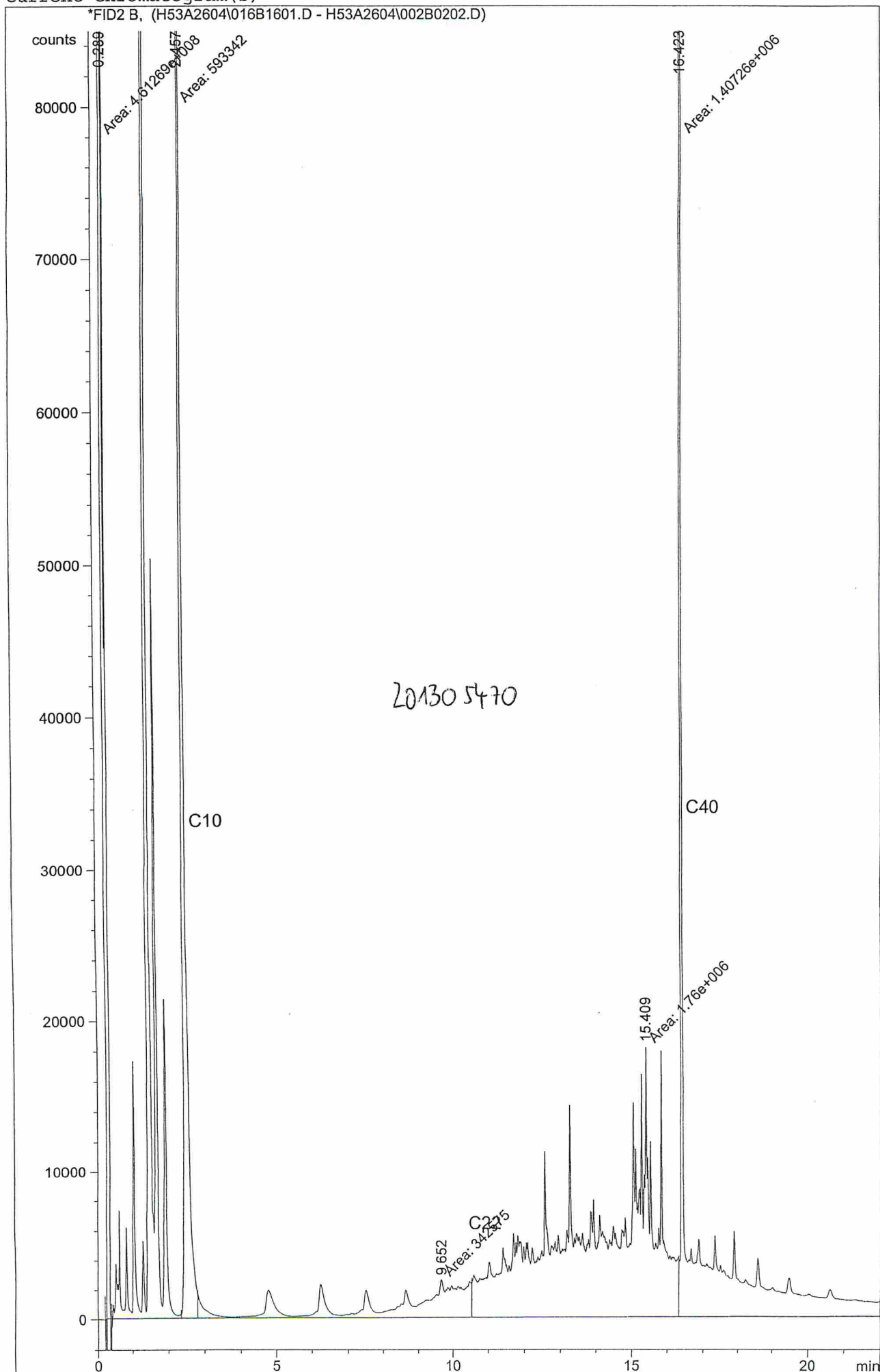
*FID2 B, (H53A2604\014B1401.D - H53A2604\002B0202.D)



201305468

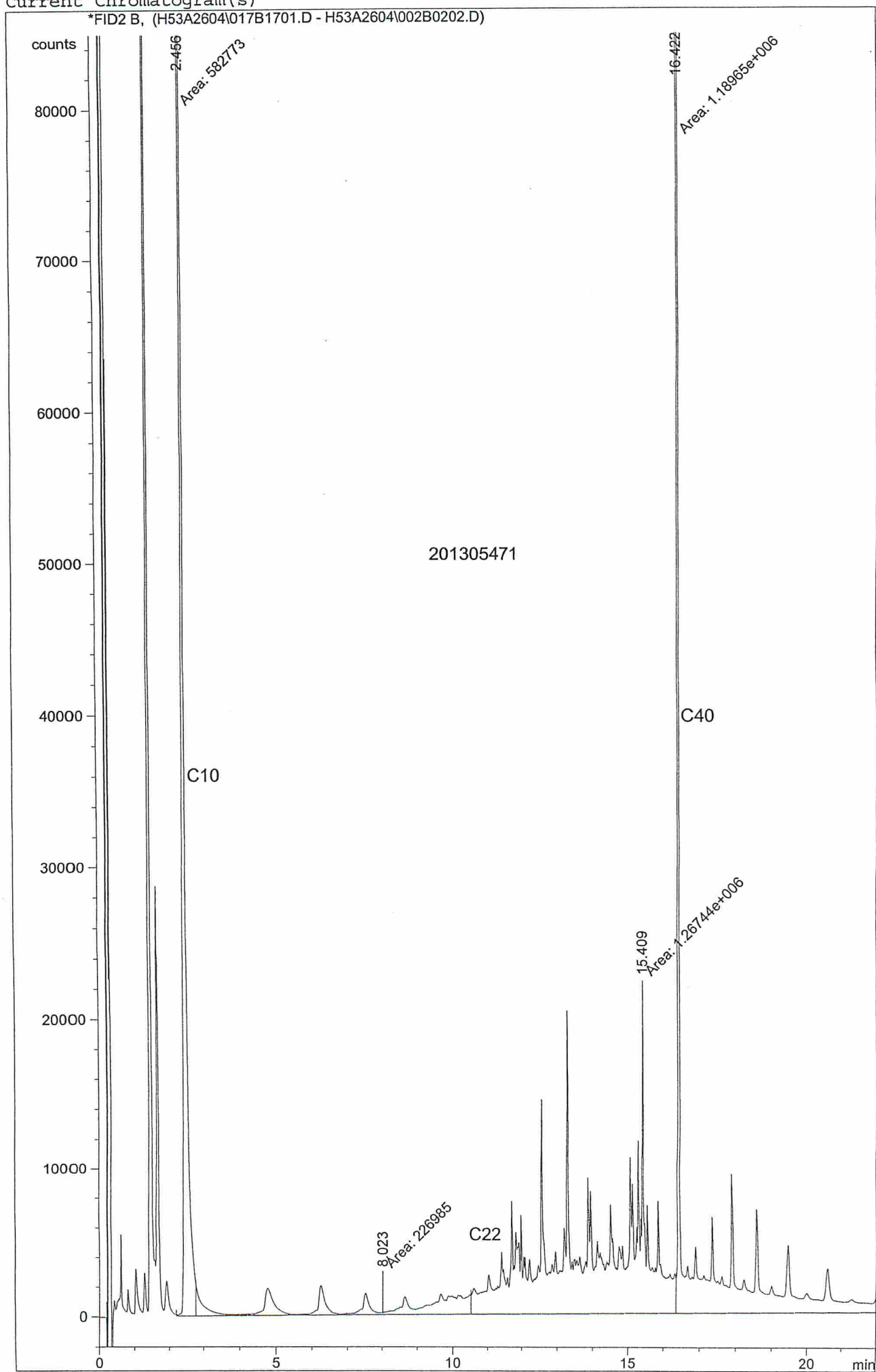
Current Chromatogram(s)

*FID2 B, (H53A2604\016B1601.D - H53A2604\002B0202.D)



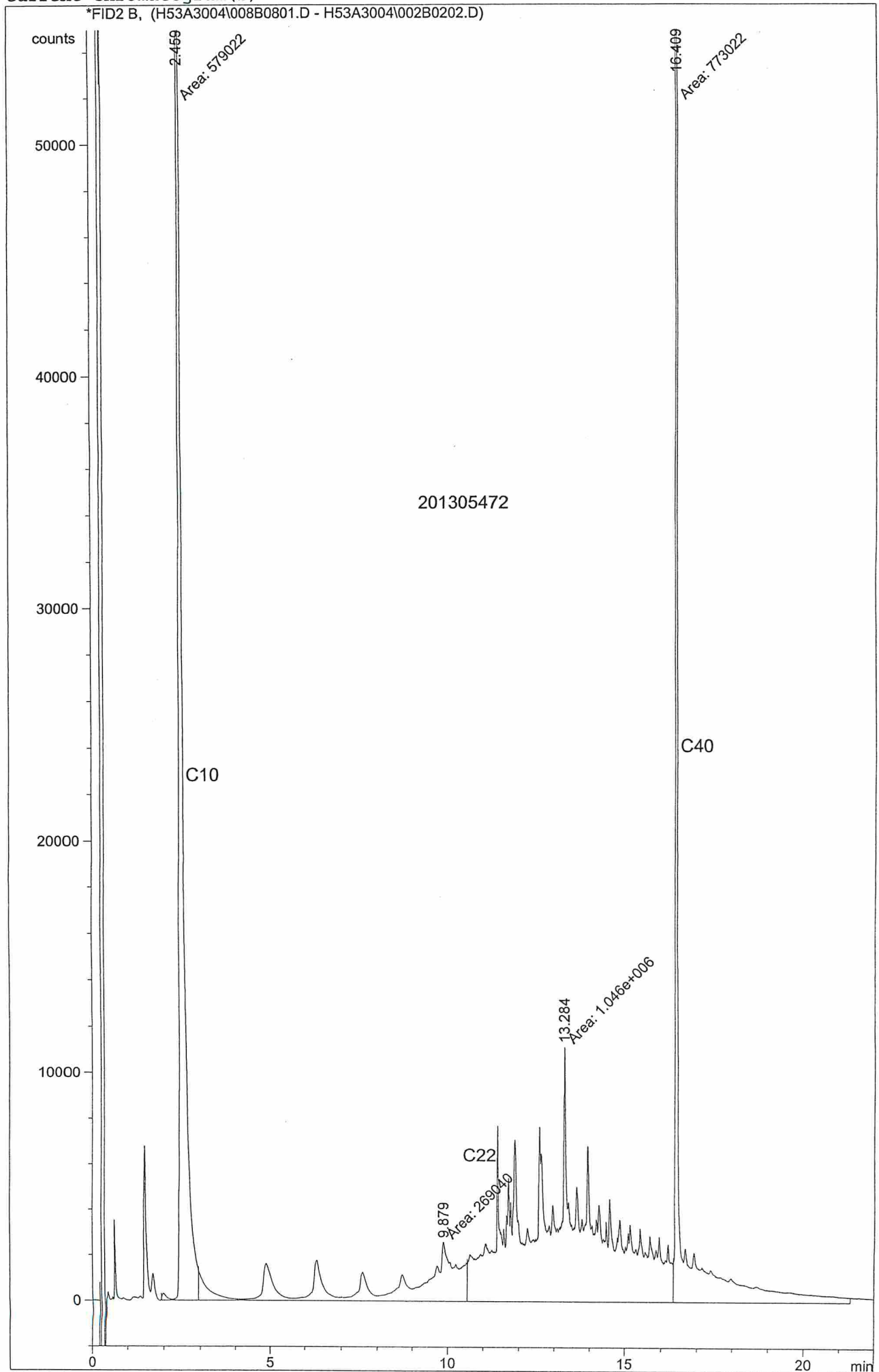
Current Chromatogram(s)

*FID2 B, (H53A2604\017B1701.D - H53A2604\002B0202.D)



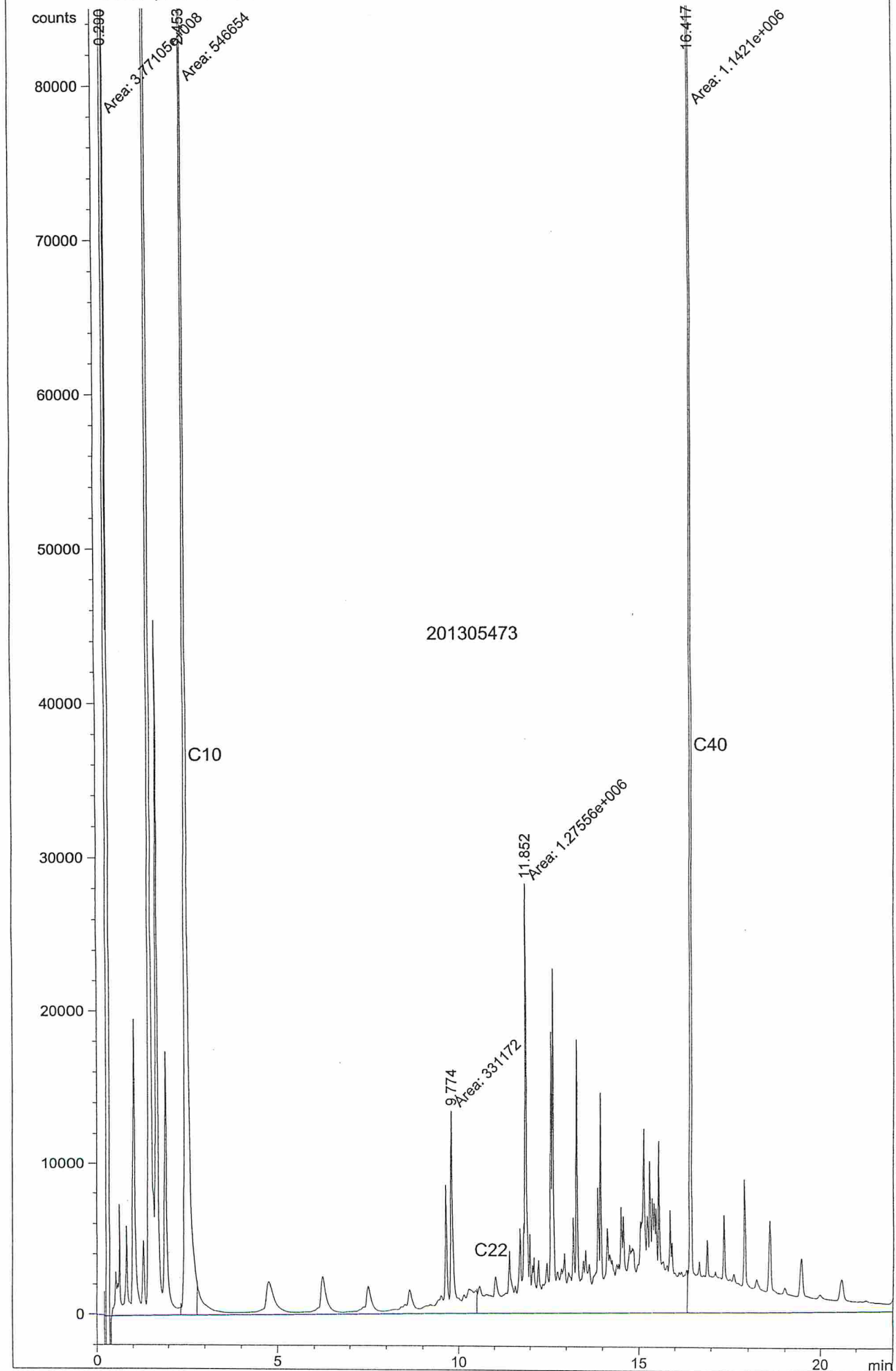
Current Chromatogram(s)

*FID2 B, (H53A3004\008B0801.D - H53A3004\002B0202.D)



Current Chromatogram(s)

*FID2 B, (H53A2604\025B2601.D - H53A2604\002B0202.D)



201305473

C10

C40

C22